

Log of Boring No. BRC-SB-24-A

BMI Site - Hydrogeologic Characterization

Henderson, Nevada



Drilling Method: Hollow Stem Auger
Drilling Equipment: CME-95/Hollow Stem Auger
Drilling Contractor: Water Development Corporation
Driller: Brian Johnson

Borehole Total Depth: 85 ft bgs
Borehole Diameter: 11 in
Boring Location: Location 24
Depth to Water (ft. bgs): NA

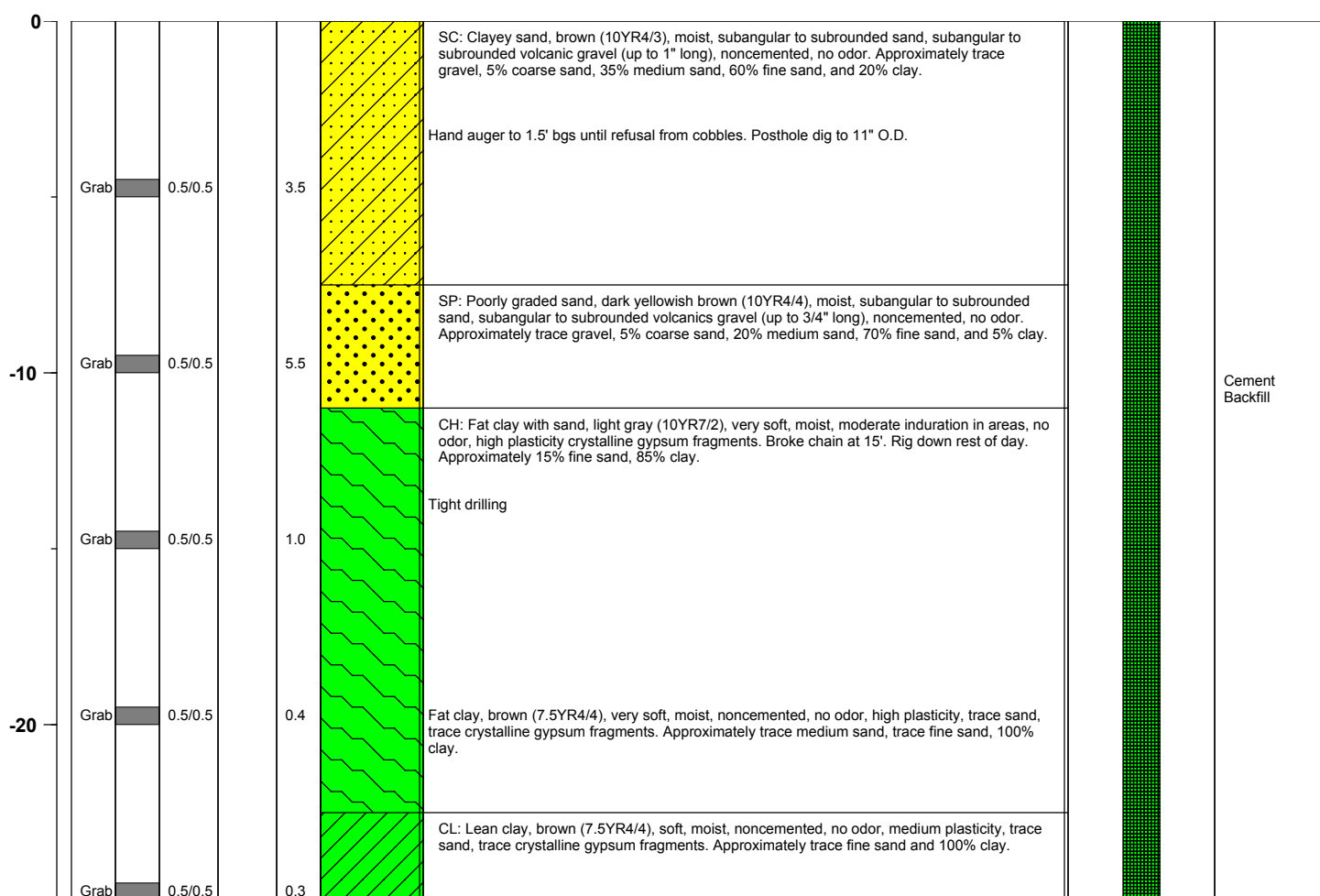
Sample Type: Cuttings grab
Sample Interval: Varied

Logged By: Jennifer Wiley
Date Started: 4/3/04
Date Completed: 4/6/04

Monitoring Well Construction

Type of Surface Seal:	N/A	Screen Slot Size:	N/A
Blank Casing Type/Size:	N/A	Top of Screen (ft. bgs):	N/A
Screen Type/Size:	N/A	Bottom of Screen (ft. bgs):	N/A
Transition Sand Type:	N/A	Type of Sand Pack:	N/A

Depth Elevation (MSLD)	Sample Type	Sample Interval	Sample Recovery (feet)	Sample Retained for Analysis	PID	Lithology	Soil Description	Well Construction
---------------------------	-------------	-----------------	---------------------------	---------------------------------	-----	-----------	------------------	-------------------



Project No. 3850360

Log of Boring: BRC-SB-24-A



BMI Site - Hydrogeologic Characterization

Henderson, Nevada



Log of Boring No. BRC-SB-24-A

Depth Elevation (MSLD)	Sample Type	Sample Interval	Sample Recovery (feet)	Sample Retained for Analysis	PID	Lithology	Soil Description	Well Construction
---------------------------	-------------	-----------------	---------------------------	---------------------------------	-----	-----------	------------------	-------------------

-30	Grab	0.5/0.5	0.3				Lean clay, brown (7.5YR4/4), soft, moist, noncemented, no odor, medium plasticity, trace sand, trace crystalline gypsum fragments. Approximately trace medium sand, trace fine sand and 100% clay	
	Grab	0.5/0.5	0.5				Lean clay, brown (7.5YR4/4), soft, moist, noncemented, no odor, medium plasticity, 5% gypsum crystals (up to 3/4" long), gravel size. Approximately 5% gravel and 95% clay.	
-40	Grab	0.5/0.5	0.2				Lean clay, brown (7.5YR4/4), soft, moist, noncemented, no odor, medium plasticity, 5% gypsum crystals (up to 3/4" long), coarse sand to gravel size. Approximately 5% gravel, trace coarse sand and 95% clay.	
							Knocked out wood plug and waited for water. Water level meter dry.	
	Grab	0.5/0.5	0.1				Lean clay, brown (7.5YR4/4), soft, moist, noncemented, no odor, medium plasticity, 5% gypsum crystals (up to 1/2" long) medium sand to gravel size. Approximately 5% gravel, trace coarse sand, trace medium sand and 95% clay.	
-50	Grab	0.5/0.5	0.1				Lean clay, brown (7.5YR4/4), soft, moist, noncemented, no odor, medium to high plasticity, trace gypsum crystals (sand to gravel size up to 1/2" long). Approximately trace gravel, trace coarse sand, trace medium sand, trace fine sand and 100% clay.	
	Grab	0.5/0.5	1.5				Lean clay, brown (7.5YR4/4), stiff, moist, noncemented, no odor, medium plasticity, trace gypsum crystals (sand to gravel size up to 1" long). Approximately trace gravel, trace coarse sand, trace medium sand, trace fine sand and 100% clay.	

Project No. 3850360

Log of Boring: BRC-SB-24-A



BMI Site - Hydrogeologic Characterization

Henderson, Nevada



Log of Boring No. BRC-SB-24-A

Depth Elevation (MSLD)	Sample Type	Sample Interval	Sample Recovery (feet)	Sample Retained for Analysis	PID	Lithology	Soil Description	Well Construction
---------------------------	-------------	-----------------	---------------------------	---------------------------------	-----	-----------	------------------	-------------------

-60	Grab	0.5/0.5			1.3		Lean clay, brown (7.5YR4/4), medium stiff, moist, noncemented, no odor, medium plasticity, trace gypsum crystals (sand to gravel size up to 1/2" long). Approximately trace gravel, trace coarse sand, trace medium sand, trace fine sand and 100% clay.	
							Knocked out plug and wait for water. Water level meter dry.	
	Grab	0.5/0.5			0.9		Lean clay, brown (7.5YR4/4), soft, moist, noncemented, no odor, medium plasticity, trace gypsum crystals (sand to gravel size up to 0.7 inch long). Approximately trace gravel, trace coarse sand, trace medium sand, trace fine sand and 100% clay.	Cement Backfill
-70	Grab	0.5/0.5			0.7		Lean clay, yellowish brown (10YR5/4), medium stiff, moist, noncemented, no odor, medium plasticity, trace gypsum crystals (sand and gravel size up to 1/2" long). Approximately trace gravel, trace coarse sand, trace medium sand, trace fine sand and 100% clay.	
	Grab	0.5/0.5			0.8		Lean clay, yellowish brown (10YR5/4), medium stiff, moist, noncemented, no odor, medium plasticity, trace gypsum crystals (sand to gravel size, up to 3/4" long). Approximately trace gravel, trace coarse sand, trace medium sand, trace fine sand and 100% clay.	
-80	Grab	0.5/0.5			1.2		Lean clay, grayish brown (2.5Y5/2), medium stiff, moist, noncemented, no odor, medium plasticity, trace gypsum crystals (sand to gravel size - up to 3/4" long). Approximately trace gravel, trace coarse sand, trace medium sand, trace fine sand and 100% clay.	
							Knocked out plug and wait for water. Water level meter dry.	
							Borehole terminated. No groundwater encountered during drilling. Backfilled with cement.	
	Grab	0.5/0.5			1.2		Lean clay, grayish brown (2.5Y5/2), medium stiff, moist, noncemented, no odor, medium plasticity, trace gypsum crystals (sand to gravel size - up to 1/2" long). Approximately trace gravel, trace coarse sand, trace medium sand, trace fine sand and 100% clay.	

Project No. 3850360

Log of Boring: BRC-SB-24-A

