

Log of Boring No. BRC-SB-12-B

BMI Site - Hydrogeologic Characterization

Henderson, Nevada



Drilling Method: Rotary Sonic
Drilling Equipment: Rotary Sonic
Drilling Contractor: Prosonic Corporation
Driller: Oscar Medrane

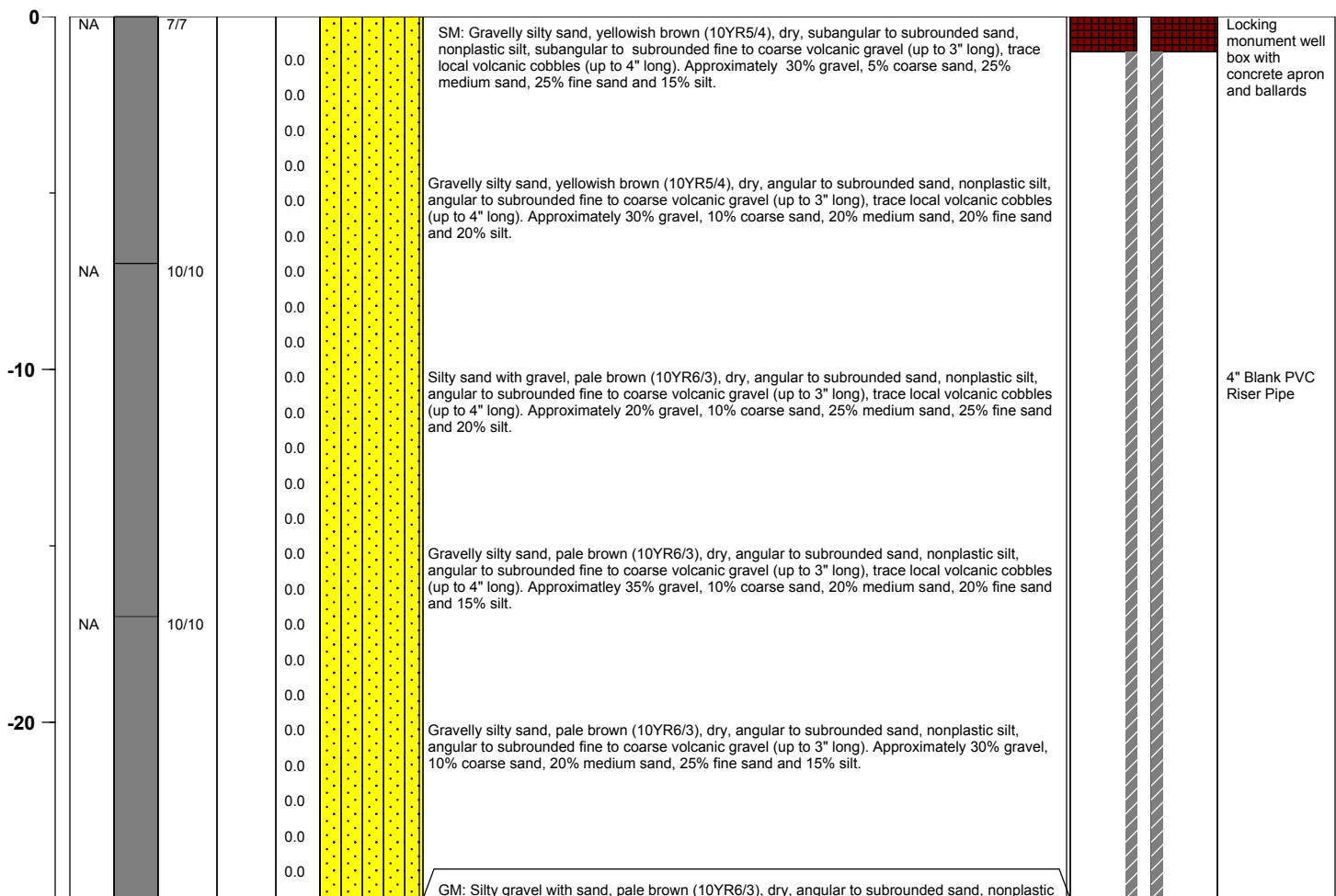
Borehole Total Depth: 370 ft bgs
Borehole Diameter: 9.5 in to 0-97 ft, 8.5 in to 97-370 ft bgs
Boring Location: Location 12 (Well ID: MCF-12 B)
Depth to Water (ft. bgs): NA

Sample Type: Split spoon/HP
Sample Interval: Continuous

Logged By: Adam Norris
Date Started: 4/15/04
Date Completed: 4/19/04

Monitoring Well Construction			
Type of Surface Seal:	Bentonite-Grout	Screen Slot Size:	0.010 in
Blank Casing Type/Size:	4" Sch 80 PVC	Top of Screen (ft. bgs):	349.5 ft bgs
Screen Type/Size:	4" Sch 80 PVC	Bottom of Screen (ft. bgs):	369.5 ft bgs
Transition Sand Type:	NA	Type of Sand Pack:	#3

Depth Elevation (MSLD)	Sample Type	Sample Interval	Sample Recovery (feet)	Sample Retained for Analysis	PID	Lithology	Soil Description	Well Construction
---------------------------	-------------	-----------------	---------------------------	---------------------------------	-----	-----------	------------------	-------------------



Project No. 3850360

Log of Boring: BRC-SB-12-B



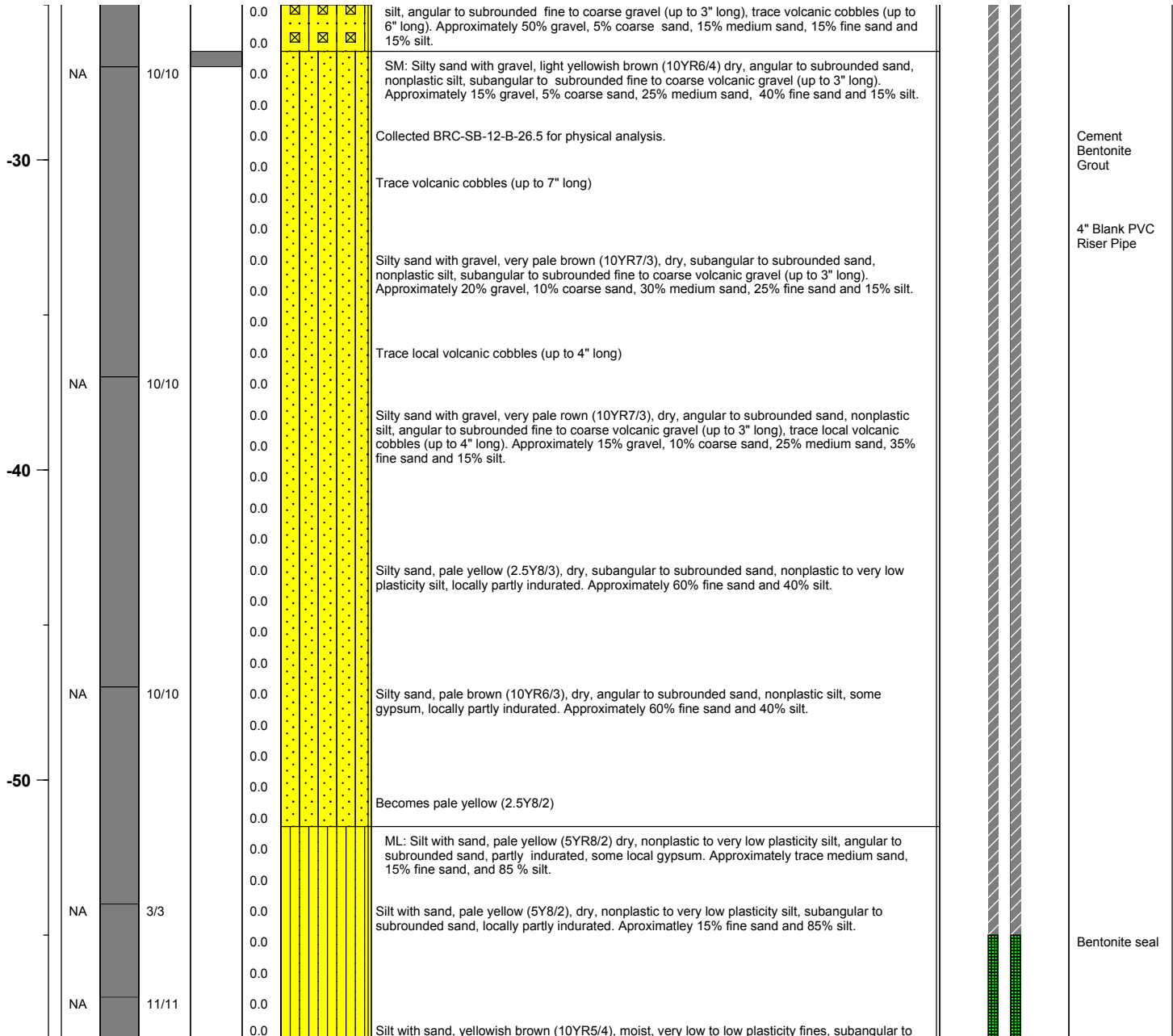
BMI Site - Hydrogeologic Characterization

Henderson, Nevada



Log of Boring No. BRC-SB-12-B

Depth Elevation (MSLD)	Sample Type	Sample Interval	Sample Recovery (feet)	Sample Retained for Analysis	PID	Lithology	Soil Description	Well Construction
---------------------------	-------------	-----------------	---------------------------	---------------------------------	-----	-----------	------------------	-------------------



Project No. 3850360

Log of Boring: BRC-SB-12-B



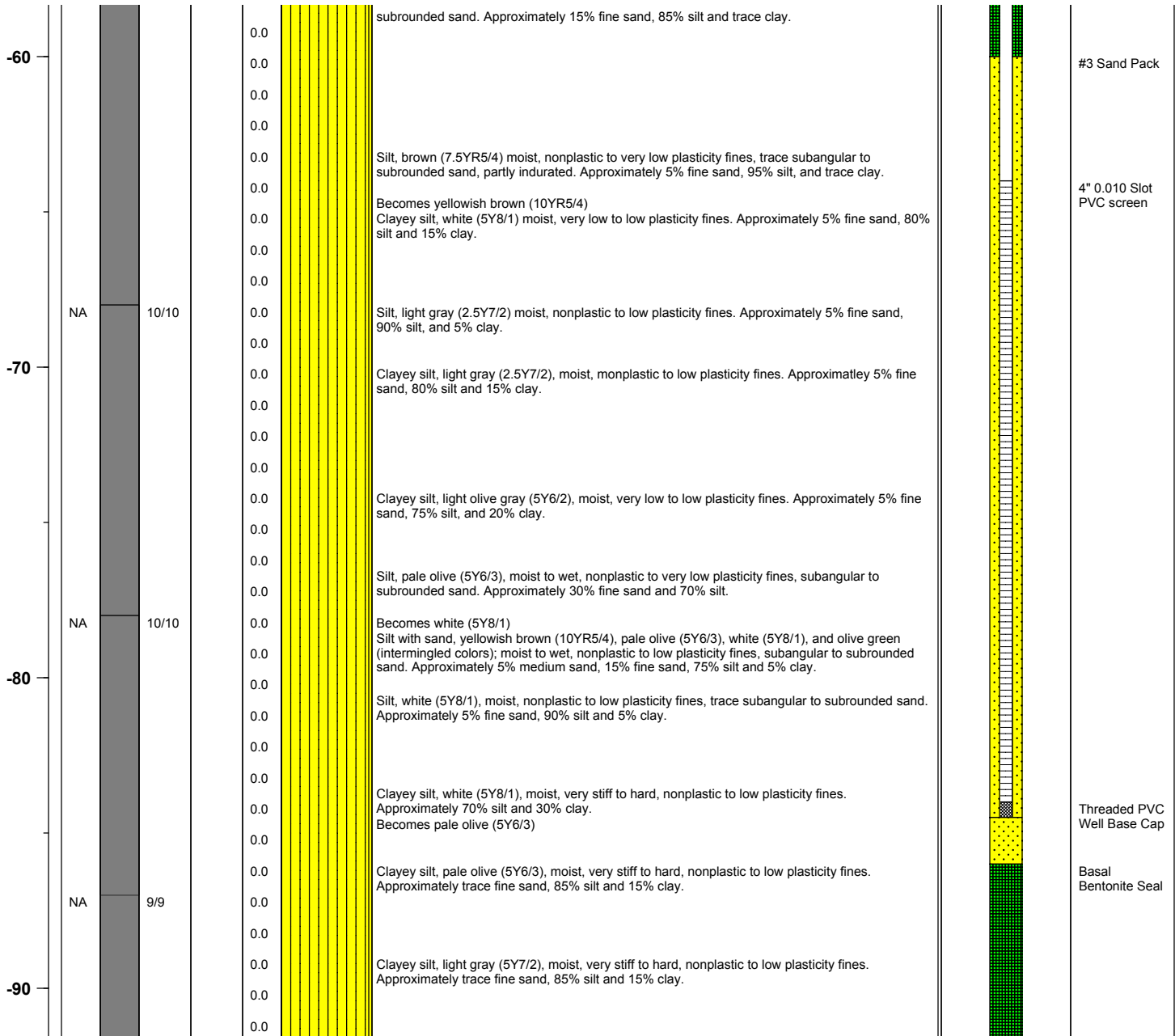
BMI Site - Hydrogeologic Characterization

Henderson, Nevada



Log of Boring No. BRC-SB-12-B

Depth Elevation (MSLD)	Sample Type	Sample Interval	Sample Recovery (feet)	Sample Retained for Analysis	PID	Lithology	Soil Description	Well Construction
---------------------------	-------------	-----------------	---------------------------	---------------------------------	-----	-----------	------------------	-------------------



Project No. 3850360

Log of Boring: BRC-SB-12-B



Page 3 of 12

BMI Site - Hydrogeologic Characterization

Henderson, Nevada



Log of Boring No. BRC-SB-12-B

Depth Elevation (MSLD)	Sample Type	Sample Interval	Sample Recovery (feet)	Sample Retained for Analysis	PID	Lithology	Soil Description	Well Construction
---------------------------	-------------	-----------------	---------------------------	---------------------------------	-----	-----------	------------------	-------------------

							Clayey silt, pale olive (5Y6/3), moist, very stiff to hard, very low to low plasticity fines, trace subangular to subrounded sand. Approximately 5% fine sand, 65% silt, and 30% clay.	
							Becomes brown (7.5YR5/4)	
							Clayey silt, brown (7.5YR5/4), moist, very stiff, nonplastic. Approximately 70% silt and 30% clay.	
	NA	10/10					Clayey silt, brown (7.5YR5/4), moist, very stiff, very low to low plasticity fines. Approximately 80% silt, and 20% clay.	
							Clayey silt, brown (7.5YR5/4), moist, very stiff, very low to low plasticity fines. Approximately 5% fine sand, 80% silt, and 15% clay.	
							Clayey silt, brown (7.5YR5/3) moist, very stiff, very low to low plasticity fines. Approximately trace fine sand, 80% silt and 20% clay.	
							Clayey silt, brown (7.5YR5/3), moist, very stiff, very low to low plasticity fines. Approximately 80% silt and 20% clay.	
	NA	11/11					Clayey silt, brown (7.5YR5/4), moist, very stiff, very low to low plasticity fines. Approximately 80% silt and 20% clay.	
							Clayey silt, brown (7.5YR5/4), moist, very stiff, very low to low plasticity fines. Approximately 85% silt and 15% clay.	
							Clayey silt, brown (7.5YR5/4), moist, very stiff, very low to low plasticity fines. Approximately 5% fine sand, 80% silt and 15% clay.	
	NA	10/10					Clayey silt, brown (7.5YR5/4), moist, very stiff, very low to low plasticity fines. Approximately 5% fine sand, 80% silt and 15% clay.	
							Clayey silt, brown (7.5YR5/4), moist, stiff, very low to no plasticity. Approximately 5% fine sand, 80% silt and 15% clay.	
							Silt with clay and sand, brown (7.5YR5/4), moist to wet, fine to very fine sand, silt with clay, no cementation, very low to no plasticity. Approximately 15% fine sand, 80% silt and 5% clay.	
							Approximately 10% fine sand, 80% silt and 10% clay	
							Silt with clay, brown (7.5YR5/4), very stiff, slightly moist, very fine sand, no cementation, very low plasticity. Approximately 5% fine sand, 85% silt and 10% clay.	

Project No. 3850360

Log of Boring: BRC-SB-12-B



BMI Site - Hydrogeologic Characterization

Henderson, Nevada



Log of Boring No. BRC-SB-12-B

Depth Elevation (MSLD)	Sample Type	Sample Interval	Sample Recovery (feet)	Sample Retained for Analysis	PID	Lithology	Soil Description	Well Construction
---------------------------	-------------	-----------------	---------------------------	---------------------------------	-----	-----------	------------------	-------------------

-130	NA	10/10					<p>Approximately 5% fine sand, 90% silt and 5% clay</p> <p>Silt with clay, brown (7.5YR5/4), stiff, slightly moist, very fine sand, no cementation, nonplastic. Approx. 10% fine sand, 85% silt and 5% clay.</p> <p>Approximately 15% fine sand, 80% silt and 5% clay</p> <p>Approximately 5% fine sand, 60% silt and 35% clay</p> <p>Clayey silt, brown (7.5YR5/4), stiff, moist, very fine sand, no cementation, moderate plasticity. Approximately 10% fine sand, 85% silt, and 5% clay.</p> <p>Silt with clay, light bluish gray (Gley 2 7/5B), very stiff to hard, slightly moist, fine to very fine sand, weak cementation, very low plasticity. Approximately 5% fine sand, 85% silt, and 10% clay.</p> <p>Approximately 10% fine sand, 80% silt and 10% clay</p> <p>Clayey silt, bluish gray (Gley 2 6/5B), very hard, moist, trace very fine sand, weak cementation, very low plasticity. Approximately trace fine sand, 85% silt and 15% clay.</p> <p>Approximately 90% silt and 10% clay</p> <p>Silt with clay, brown (7.5YR5/3), stiff, moist, no cementation, low to very low plasticity. Approximately 90% silt and 10% clay.</p> <p>Same as above.</p> <p>Silt with clay, brown (7.5YR5/3), very stiff. Approximately trace fine sand, 90% silt and 10% clay.</p> <p>Approximately 5% fine sand, 85% silt and 10% clay</p> <p>Silt with clay, brown (7.5YR5/3), stiff, moist, very fine sand, weak to no cementation, very low to no plasticity. Approximately 5% fine sand, 90% silt, and 5% clay.</p> <p>Approximately 90% silt and 10% clay</p> <p>Silt with clay, brown (7.5YR5/3), stiff, moist, very fine sand, weak to no cementation, very low to no plasticity. Approximately 5% fine sand, 90% silt, and 10% clay.</p> <p>Approximately 5% fine sand, 90% silt and 5% clay</p> <p>Silt with clay, brown (7.5YR5/3), stiff, moist, very fine sand, no cementation, nonplastic. Approximately 10% fine sand, 85% silt and 5% clay.</p> <p>Approximately 20% fine sand, 75% silt and 5% clay</p> <p>Silt with clay, light brown (7.5YR6/3), hard, very fine sand, weak to no cementation, nonplastic. Approximately 5% fine sand, 90% silt and 5% clay.</p> <p>Approximately trace fine sand, 85% silt and 15% clay</p> <p>Silt with clay, brown (7.5YR5/3), moist, very fine sand, no cementation, very low plasticity. Approximately 10% fine sand, 80% silt and 10% clay.</p> <p>Approximately 10% fine sand, 80% silt and 10% clay</p> <p>Silt with clay, light gray (7.5YR7/1), hard, moist, very fine sand, weak cementation, nonplastic. Approx. 5% fine sand, 90% silt, and 5% clay.</p> <p>Approximately 85% silt and 15% clay</p> <p>Silt, brown (7.5YR4/4) very stiff, moist, very fine sand, no cementation, nonplastic. Approximately 10% fine sand, 90% silt and trace clay.</p> <p>Silt with clay, brown (7.5YR4/4), hard, moist, very fine sand, no cementation, nonplastic. Approximately 5% fine sand, 90% silt and 5% clay.</p> <p>Silt with clay, brown (7.5YR4/4), hard, moist, very fine sand, no cementation, very low plasticity. Approximately 5% fine sand, 85% silt, and 10% clay.</p>	Cement Backfill
-140	NA	10/10						
-150	NA	10/10						
	NA	10/10						

Project No. 3850360

Log of Boring: BRC-SB-12-B



BMI Site - Hydrogeologic Characterization

Henderson, Nevada



Log of Boring No. BRC-SB-12-B

Depth Elevation (MSLD)	Sample Type	Sample Interval	Sample Recovery (feet)	Sample Retained for Analysis	PID	Lithology	Soil Description	Well Construction
---------------------------	-------------	-----------------	---------------------------	---------------------------------	-----	-----------	------------------	-------------------

-160							<p>Approximately 10% fine sand, 80% silt and 10% clay</p> <p>Sandy silt, brown (7.5YR4/4), very stiff, moist to wet, fine to very fine sand, no cementation, nonplastic. Approximately 30% fine sand, 70% silt, and trace clay.</p> <p>Approximately 20% fine sand, 75% silt and 5% clay</p> <p>Approximately 30% fine sand, 60% silt and 10% clay</p> <p>Silt with sand and clay, brown (7.5YR5/3), hard, moist, fine to very fine sand, weak to no cementation, very low plasticity. Approximately 15% fine sand, 75% silt and 10% clay.</p> <p>Approximately 5% fine sand, 90% silt and 5% clay</p>	
	NA	10/10					<p>Silt with sand, light brown (7.5YR6/3), very stiff, dry to slightly moist, very fine sand, no cementation, nonplastic. Approximately 5% fine sand, 90% silt, and 5% clay.</p> <p>Approximately 85% silt and 15% clay</p> <p>Approximately 5% fine sand, 90% silt and 5% clay</p> <p>Silt with clay, brown (7.5YR5/3), very soft, wet, very fine sand, no cementation, nonplastic. Approximately 90% silt and 10% clay.</p>	
-170							<p>Silt with sand, light gray (7.5YR7/1), very stiff, moist, no cementation, very low to no plasticity. Approximately 95% silt and 5% clay.</p> <p>Approximately 95% silt and 5% clay</p> <p>Approximately 90% silt and 10% clay</p> <p>Silt, brown (7.5YR4/4), hard, moist, very fine sand, no cementation, nonplastic. Approximately 5% fine sand, 95% silt, and trace clay.</p> <p>Approximately 100% silt.</p> <p>Silt, light greenish gray (Gley 2 7/10G), very hard, moist to dry, weak to moderate cementation. Approximately 100% silt.</p>	
	NA	10/10					<p>Approximately 95% silt and 5% clay</p> <p>Approximately 90% silt and 10% clay</p> <p>Silt with clay, light greenish gray (Gley 2 7/10G), hard, slightly moist to dry, weak to no cementation, very low to no plasticity. Approximately 95% silt and 5% clay.</p>	
-180							<p>Approximately 95% silt and 5% clay</p> <p>Approximately 90% silt and 10% clay</p> <p>Silt with clay, light brown (7.5YR6/3), very stiff to hard, very dry, weak cementation, nonplastic. Approximately 95% silt, and 5% clay.</p> <p>Approximately 10% fine sand, 80% silt and 10% clay</p> <p>Sandy silt with clay, light brown (7.5YR6/3), soft, wet, no cementation, nonplastic. Approximately 30% fine sand, 65% silt, and 5% clay.</p> <p>Approximately 5% fine sand, 95% silt and trace clay</p>	
	NA	10/10					<p>Silt, greenish gray (Gley 2 6/5BG), very hard, dry, moderate to weak cementation, nonplastic. Approximately 100% silt.</p> <p>Silt, greenish gray (Gley 2 6/5BG), hard, dry, moderate to weak cementation, nonplastic. Approximately 100% silt.</p>	
-190							<p>Silt, light bluish gray (Gley 2 7/5B), very hard, dry, moderate to weak cementation, nonplastic. Approximately 100% silt.</p> <p>Approximately trace fine sand, 95% silt and 5% clay</p> <p>Approximately 10% fine sand, 80% silt and 10% clay</p> <p>Silt, bluish gray (Gley 2 5/5BG), hard, moist, very fine sand, moderate to no cementation, very low to no plasticity. Approximately 5% fine sand, 90% silt and 10% clay.</p>	

Project No. 3850360

Log of Boring: BRC-SB-12-B



BMI Site - Hydrogeologic Characterization

Henderson, Nevada



Log of Boring No. BRC-SB-12-B

Depth Elevation (MSLD)	Sample Type	Sample Interval	Sample Recovery (feet)	Sample Retained for Analysis	PID	Lithology	Soil Description	Well Construction
---------------------------	-------------	-----------------	---------------------------	---------------------------------	-----	-----------	------------------	-------------------

							Approximately 90% silt and 10% clay	
							Silt with clay, gray (7.5YR5/1), hard, moist, very fine sand, moderate to no cementation, very low plasticity. Approx. 5% fine sand, 85% silt, and 10% clay.	
							Approximately 85% silt and 15% clay Approximately 10% fine sand, 80% silt and 10% clay	
							Silt with clay, greenish gray (Gley 2 5/5BG), hard, moist, weak cementation, low plasticity. Approximately 85% silt and 15% clay.	
							Approximately 95% silt and 5% clay	
-200	NA	10/10					Silt with clay, greenish gray (Gley 2 6/5BG), very hard, dry to moist, moderate to weak cementation. Approximately 90% silt and 10% clay.	
							Silt with clay, greenish gray (Gley 2 6/5BG), very hard, dry to slightly moist, moderate to weak cementation, nonplastic. Approximately 95% silt and 5% clay.	
							Silt, light greenish gray (Gley 2 7/5BG), very hard, dry, moderate to strong cementation, nonplastic. Approximately 100% silt and trace clay. Approximately 100% silt and trace clay.	
							Approximately 100% silt and trace clay	
							Silt, light greenish gray (Gley 2 7/5BG), very hard, dry, moderate to strong cementation, nonplastic. Approximately trace fine sand, 100% silt and trace clay.	
-210	NA	10/10					Approximately 90% silt and 10% clay Silt with clay, dark bluish gray (Gley 2 4/5B), very stiff, moist, coarse sand is gypsum crystal, weak cementation, very low to no plasticity. Approximately 10% coarse sand, trace medium and fine sand, 80% silt, and 10% clay.	
							Approximately trace fine sand, 95% silt and 5% clay Approximately 5% fine sand, 95% silt and 5% clay Approximately 15% fine sand, 85% silt and trace clay	
							Sandy silt, pinkish gray (7.5YR6/2), very hard, dry, fine to very fine sand, moderate to strong cementation, nonplastic. Approximately 30% fine sand, 70% silt.	
							Approximately 20% fine sand and 80% silt.	
							Silt, greenish gray (Gley 2 5/10G), very hard, dry to slightly moist, very fine sand, weak to strong cementation, nonplastic. Approximately 10% fine sand, 90% silt and trace clay.	
-220	NA	10/10					Silt with sand, brown (7.5YR5/2), hard, dry to slightly moist, very fine sand, weak cementation, nonplastic. Approximately 20% fine sand, 80% silt, and trace clay.	
							Approximately 5% fine sand, 95% silt and trace clay	
							Silt with clay, bluish gray (Gley 2 6/5B), hard, dry, gravel and sand consist of gypsum crystals, weak cementation, very low plasticity. Approximately 10% gravel, 5% coarse sand, trace medium sand, 75% silt and 10% clay.	
							Approximately 5% fine sand, 90% silt and 5% clay	
							Silt with clay, light greenish gray (Gley 2 8/5BG), hard, dry, weak cementation, very low plasticity. Approximately 5% fine sand, 85% silt and 10% clay.	

Cement
Backfill

Project No. 3850360

Log of Boring: BRC-SB-12-B



Page 7 of 12

BMI Site - Hydrogeologic Characterization

Henderson, Nevada



Log of Boring No. BRC-SB-12-B

Depth Elevation (MSLD)	Sample Type	Sample Interval	Sample Recovery (feet)	Sample Retained for Analysis	PID	Lithology	Soil Description	Well Construction
---------------------------	-------------	-----------------	---------------------------	---------------------------------	-----	-----------	------------------	-------------------

-230	NA	10/10					<p>Clayey silt, light bluish gray (Gley 2 8/5B), very hard, dry, weak to strong cementation, low plasticity. Approximately 85% silt and 15% clay.</p> <p>Approximately 85% silt and 15% clay</p> <p>Clayey silt, light bluish gray (Gley 2 7/5B), very hard, dry, weak to moderate plasticity. Approx. 5% fine sand, 80% silt and 15% clay.</p> <p>Approximately 15% fine sand, 70% silt and 15% clay</p> <p>Silt with clay, greenish gray (Gley 2 6/5BG), very hard, dry, gravel and sand consists of gypsum crystals, weak to moderate cementation, very low plasticity. Approximately trace fine sand, 95% silt, and 5% clay.</p> <p>Approximately trace fine sand, 95% silt and 5% clay</p> <p>Approximately 95% silt and 5% clay</p> <p>Silt with clay, light gray (7.5YR7/1), very hard, dry, sand consists of gypsum crystals, weak to moderate cementation, nonplastic. Approx. 5% coarse sand, 5% medium sand, 85% silt, and 5% clay.</p> <p>Approximately 10% gravel, 5% coarse sand, trace medium sand, 75% silt and 10% clay</p> <p>Approximately trace fine sand, 100% silt and trace clay</p> <p>Silt, light gray (7.5YR7/1), hard, dry, weak cementation, nonplastic. Approximately 100% silt and trace clay.</p> <p>Clayey silt, greenish gray (Gley 2 6/10BG), hard dry to slightly moist, weak cementation, low plasticity. Approximately 85% silt, and 15% clay.</p> <p>Approximately 5% fine sand, 85% silt and 10% clay</p> <p>Silt with clay, greenish gray (Gley 2 6/10BG), stiff, moist, no cementation, very low plasticity. Approximately trace fine sand, 90% silt and 10% clay.</p> <p>Silt, light bluish gray (Gley 2 8/5B), hard, dry, very fine sand, weak cementation, nonplastic. Approximately 5% fine sand, 95% silt, and trace clay.</p> <p>Silt with clay, brown (7.5YR5/2), very stiff, moist, very fine sand, no cementation, very low plasticity. Approximately 5% fine sand, 90% silt, and 5% clay.</p> <p>Approximately trace fine sand, 90% silt and 10% clay</p> <p>Clayey silt, greenish blue (Gley 2 6/10BG), medium stiff, moist, no cementation, low plasticity. Approximately 85% silt and 15% clay.</p> <p>Approximately 5% fine sand, 90% silt and 5% clay</p> <p>Silt with clay, greenish gray (Gley 2 6/10G), medium stiff, moist, weak cementation, very low plasticity. Approximately 90% silt and 10% clay.</p> <p>Approximately trace fine sand, 90% silt and 10% clay</p> <p>Silt with clay, greenish gray (Gley 2 6/10G), very hard, dry to moist, weak to strong cementation, nonplastic. Approximately trace fine sand, 90% silt and 10% clay.</p> <p>Approximately trace fine sand, 90% silt and 10% clay</p> <p>Silt with sand, pinkish gray (7.5YR6/2), very hard, dry, fine to very fine sand, weak to strong cementation, nonplastic. Approximately 20% fine sand and 80% silt.</p> <p>Approximately 10% fine sand, 85% silt and 5% clay</p> <p>Approximately 5% fine sand, 85% silt and 10% clay</p> <p>Silt with clay, pinkish gray (7.5YR6/2), very hard, dry, very fine sand, weak to strong cementation, very low to no plasticity. Approximately 5% fine sand, 85% silt and 10% clay.</p> <p>Approximately trace fine sand, 95% silt and 5% clay</p> <p>Approximately 10% fine sand, 80% silt and 10% clay</p> <p>Silt with sand, brown (7.5YR 5/2), hard, dry to slightly moist, very fine sand, weak to moderate cementation, very low plasticity. Approximately 15% fine sand, 85% silt and trace clay.</p>	Cement Backfill
-240	NA	10/10						
-250	NA	10/10						
	NA	10/10						

Project No. 3850360

Log of Boring: BRC-SB-12-B



BMI Site - Hydrogeologic Characterization

Henderson, Nevada



Log of Boring No. BRC-SB-12-B

Depth Elevation (MSLD)	Sample Type	Sample Interval	Sample Recovery (feet)	Sample Retained for Analysis	PID	Lithology	Soil Description	Well Construction
-260							Approximately 5% fine sand, 95% silt and trace clay	
							Silt with clay, brown (7.5YR 4/2), hard, moist, very fine sand, weak to moderate cementation, very low plasticity. Approximately 5% fine sand, 85% silt, and 10% clay.	
							Approximately 5% medium sand, 10% fine sand, 80% silt and 5% clay	
							Approximately 85% silt and 15% clay	
							Silt with clay, brown (7.5YR4/2), medium stiff, moist, weak cementation, very low plasticity. Approximately 90% silt and 10% clay.	
							Approximately 10% fine sand, 80% silt and 10% clay	
							Silt with clay and sand, brown (7.5YR4/2), hard, dry, weak cementation, very low plasticity. Approximately 15% fine sand, 75% silt and 10% clay.	
							Approximately 85% silt and 15% clay	
	NA	10/10					Clayey silt, white (7.5YR8/1), hard, dry, weak cementation, low plasticity. Approximately 85% silt and 15% clay.	
							Approximately 5% fine sand, 95% silt and 5% clay	
-270							Silt, white (7.5YR8/1), very hard, dry, moderate to strong cementation, nonplastic. Approximately 10% fine sand, 90% silt and trace clay.	
							Approximately 85% silt and 15% clay	
							Clayey silt, gray (7.5YR5/1), hard, dry, very fine sand, weak to moderate cementation, very low plasticity. Approximately 5% fine sand, 80% silt and 15% clay.	
							Approximately 5% fine sand, 80% silt and 15% clay	
	NA	10/10					Silt with Clay, white (7.5YR8/1), hard, dry, very fine sand, weak to strong cementation, low plasticity. Approximately 5% fine sand, 85% silt and 10% clay.	
							Approximately 5% fine sand, 85% silt and 10% clay	
-280							Clayey silt, light gray (7.5YR7/1), hard, dry to slightly moist, weak to moderate cementation, low plasticity. Approximately 75% silt and 25% clay.	
							Approximately 5% fine sand, 80% silt and 15% clay	
							Silt with sand and clay, light gray (7.5YR7/1), hard, dry, weakly cemented, very low to no plasticity. Approximately 15% fine sand, 80% silt and 5% clay.	
							Approximately 15% fine sand, 80% silt and 5% clay	
							Silt with sand and clay, light gray (7.5YR7/1), very stiff, dry, fine to very fine sand, weak cementation, very low plasticity. Approximately 15% fine sand, 80% silt, and 5% clay.	
							Approximately 20% fine sand, 75% silt and 5% clay	
							Approximately 10% gravel, 5% coarse sand, 5% medium sand, 5% fine sand, 60% silt and 15% clay	
	NA	12/12					Clayey silt with sand, light greenish gray (Gley 2 7/1), very stiff, dry, gravel and sand consists of gypsum crystals, weak cementation, very low plasticity. Approximately 20% fine sand, 70% silt and 10% clay.	
							Approximately 20% fine sand, 75% silt and 5% clay	
-290							Silt, light gray (7.5YR7/1), hard, dry, very fine sand, trace clay, weak to moderate cementation, nonplastic. Approximately 10% fine sand, 90% silt and trace clay.	

Project No. 3850360

Log of Boring: BRC-SB-12-B



BMI Site - Hydrogeologic Characterization

Henderson, Nevada



Log of Boring No. BRC-SB-12-B

Depth Elevation (MSLD)	Sample Type	Sample Interval	Sample Recovery (feet)	Sample Retained for Analysis	PID	Lithology	Soil Description	Well Construction
---------------------------	-------------	-----------------	---------------------------	---------------------------------	-----	-----------	------------------	-------------------

-300	NA	0.5/0.5					<p>Silt with clay and sand, gray (7.5YR6/1), hard, dry, fine to very fine sand, weak cementation, very low plasticity. Approximately 25% fine sand, 65% silt and 10% clay.</p> <p>Approximately 15% fine sand, 75% silt and 10% clay</p> <p>Silt, brown (7.5YR5/2), very stiff, dry to very slightly moist, very fine sand, weak to no cementation, low plasticity. Approximately 5% fine sand, 80% silt, and 15% clay.</p> <p>Approximately 5% medium sand, 10% fine sand, 75% silt and 10% clay</p> <p>Approximately 60% silt and 40% clay</p> <p>Clayey silt, light bluish gray (Gley 2 8/10B), hard, dry, weak to moderate cementation, very low plasticity. Approximately 80% silt and 20% clay.</p> <p>Approximately trace fine sand, 85% silt and 15% clay</p> <p>Clayey silt, light bluish gray (Gley 2 8/10B), hard, dry, weak to moderate cementation, very low to low plasticity. Approximately 85% silt and 15% clay.</p> <p>Approximately 80% silt and 20% clay</p> <p>Clayey silt, light greenish gray (Gley 2 7/10BG), hard, dry, moderate cementation, very low plasticity. Approximately 80% silt and 20% clay.</p> <p>Approximately 5% fine sand, 80% silt and 15% clay</p>	
-310	NA	10/10					<p>Clayey silt, light gray (7.5YR7/1), hard, dry, weak to moderate cementation, low plasticity. Approximately 85% silt and 15% clay.</p> <p>Approximately 5% fine sand, 80% silt and 10% clay</p> <p>Silt with clay, brown (7.5YR4/2), very stiff, slightly moist, gravel and coarse sand consists of gypsum crystals, weak cementation, very low plasticity. Approx. 5% gravel, trace coarse sand, 5% fine sand, 80% silt, and 10% clay.</p> <p>Approximately trace coarse sand, 5% fine sand, 85% silt and 10% clay</p>	
-320	NA	10/10						
							<p>CL: Silty clay, dark gray (7.5YR4/1), very stiff, slightly moist, moderate to strong cementation, low to medium plasticity. Approximately 40% silt and 60% clay.</p>	
							<p>ML: Silt with clay, greenish gray (GLE2 7/10G), dry, very fine sand, weak to moderate cementation, very low plasticity. Approximately trace fine sand, 70% silt and 30% clay.</p>	

Project No. 3850360

Log of Boring: BRC-SB-12-B



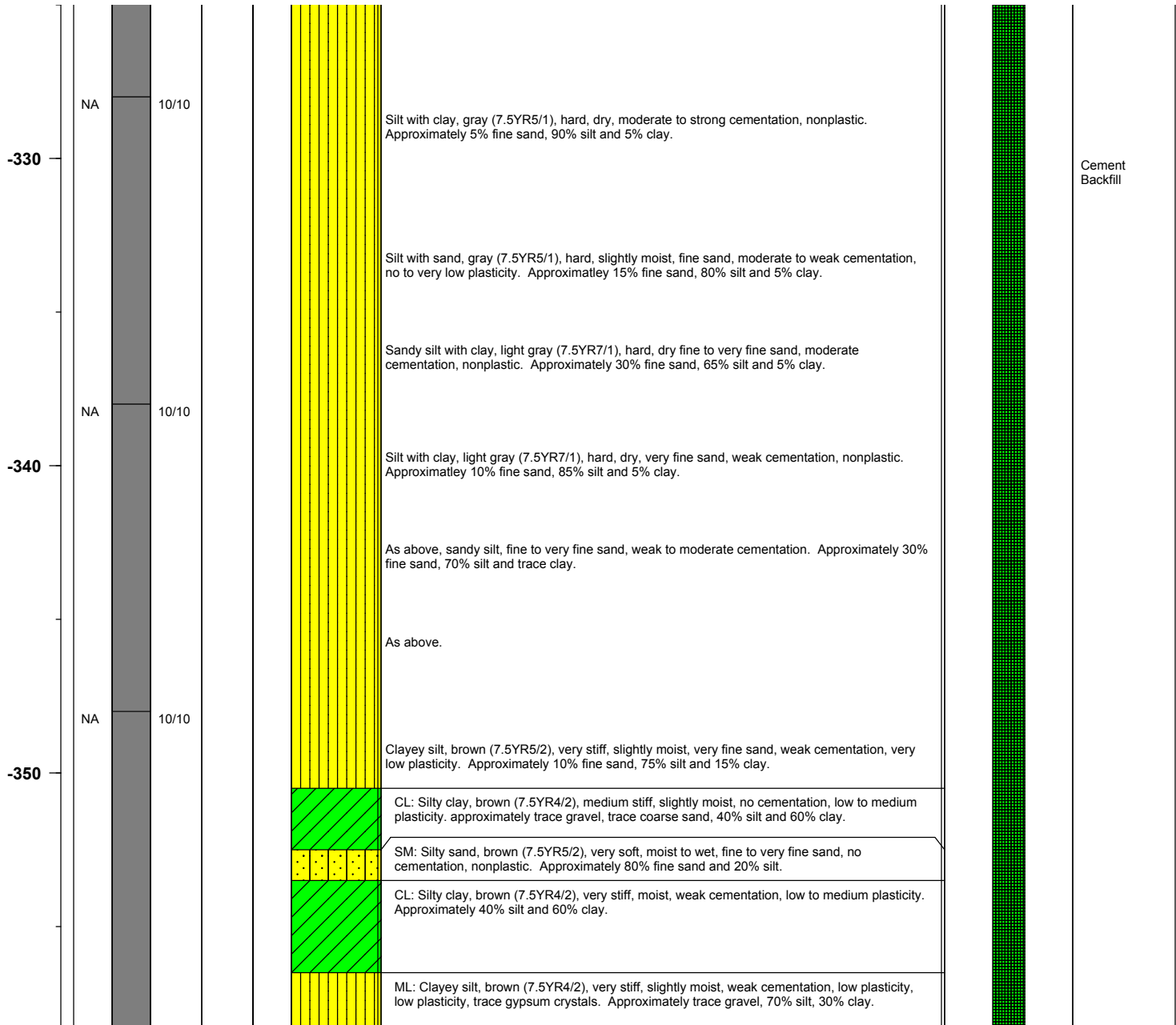
BMI Site - Hydrogeologic Characterization

Henderson, Nevada



Log of Boring No. BRC-SB-12-B

Depth Elevation (MSLD)	Sample Type	Sample Interval	Sample Recovery (feet)	Sample Retained for Analysis	PID	Lithology	Soil Description	Well Construction
---------------------------	-------------	-----------------	---------------------------	---------------------------------	-----	-----------	------------------	-------------------



Project No. 3850360

Log of Boring: BRC-SB-12-B



BMI Site - Hydrogeologic Characterization

Henderson, Nevada



Log of Boring No. BRC-SB-12-B

Depth Elevation (MSLD)	Sample Type	Sample Interval	Sample Recovery (feet)	Sample Retained for Analysis	PID	Lithology	Soil Description	Well Construction
-360	NA	10/10					<p>Sand with silt and clay, brown (7.5YR5/2), stiff, slightly moist, fine to very fine sand, weak cementation, very low plasticity. Approximately 30% fine sand, 60% silt and 10% clay.</p> <p>Very sandy silt, brown (7.5YR5/2), stiff, moist, coarse and medium sand is subround to angular gypsum, fine to very fine sand, silt and trace clay, weak cementation, very low plasticity. Approximately 15% coarse sand, 15% medium sand, 10% fine sand, 60% silt and trace clay.</p> <p>Silt with clay, brown (7.5YR5/2), very fine sand, silt with clay, weak cementation, very low plasticity. Approximately 10% fine sand, 85% silt and 5% clay.</p> <p>As above, gravel, coarse and medium sand is gypsum crystals and fragments, very fine sand silt with clay, no cementation, very low plasticity. Approximately 5% gravel, 5% coarse sand, trace medium sand, 5% fine sand, 80% silt and 5% clay.</p>	<p>Cement Backfill</p>
-370								

Project No. 3850360

Log of Boring: BRC-SB-12-B

