

## DAILY PRODUCTION & QUALITY CONTROL REPORT

Project No./Contract No.	Project Title / Location	Day of Report	Report No.
6389	BRC Eastside Common Areas Soils Remediation	30-Jul-08	35

### PROJECT POINTS OF CONTACT

Position	Name	E-Mail Address	Phone No.
BRC PROJECT MANAGER	Lee Farris	lfarris@landwellco.com	702-567-0400
BRC PROJECT MANAGER	Ranjit Sahu	sahuron@earthlink.net	702-567-0400
CONST. PROJECT MANAGER	Dan Brennecke	Dan.Brennecke@westonsolutions.com	970-260-5886
Construction Manager	Richard Laubinger	Richard.Laubinger@westonsolutions.com	720-641-8660

### WEATHER CONDITIONS

Conditions				Temp (°F)		Wind		Add'l Readings	
AM	Sunny/Clear	PM	Sunny/Clear	Low	82	Dir	9	Precip. (inches)	Humidity (%)
Additional Weather Comments				High	108				
Calm to light wind.									

### ON-SITE WESTON PERSONNEL

Name	Position	Trade / Work Performed	Y/N
Dick Laubinger	Construction Manager	Construction Management Services.	Y
Dan Brennecke	Project Manager, CM	Construction Management Services.	Y
TBD	Project Engineer	Construction Management Services.	N
TBD	Admin Assistant	Construction Management Services.	N

### ON-SITE GEOSYNTEC PERSONNEL

Name	Position	Trade / Work Performed	Y/N
Wayne Wofford	QA/QC Tech	Oversight	Y
Brent Barbacane	QA/QC Tech	Oversight	N
Jim Cox	QA/QC Supervisor	Oversight	Y
Greg Corcoran	Engineer of Record	Oversight	Y
Rebecca Flynn	Engineer	Oversight	Y

### ON-SITE SUPPORT PERSONNEL

Name	Position	Trade / Work Performed	Y/N
Doug Herlocker, Tetra Tech	Air Monitoring Specialist	Air Monitoring	Y
Becky Dano, Tetra Tech	Air Monitoring Specialist	Air Monitoring	Y
Jerry Faucheux, Tetra Tech	Air Monitoring Specialist	Air Monitoring	Y
Linda Nations, BRC	BRC, QA Oversight	Site Monitoring, Progress and Security	Y

### OVERSITE PERSONNEL

Name	Position	Trade / Work Performed	Y/N
Doug Herlocker	Air Monitoring Specialist	Air Monitoring	Y
Becky Dano	Air Monitoring Specialist	Air Monitoring	Y
Jerry Faucheux	Air Monitoring Specialist	Air Monitoring	Y
Scott McKeag, McGinley	Oversight	For NDEP	Y
Devin Gordon, McGinley	Oversight	For NDEP	Y
Dock Kim, ATC	Field Observation	For AIG	Y

### ON-SITE CONTRACTOR PERSONNEL

Name	Company	Trade / Work Performed	Y/N
Erik Geringer	Entact	Project Manager	Y
Josh Carrol	Entact	Asst Project Manager	Y
Russ Karnes	Entact	Eastside, Superintendent	Y
Michael Carlson	Entact	Engineer	Y
Joe Curilla	Entact	Health & Safety Officer	Y
Michael Parker	Entact	Health and Safety Technician	Y
	Entact	16 Equipment Operators & Truck Drivers	Y
Ed Long	Entact	CAMU, Superintendent	Y
	American Asphalt	Earthwork Superintendent	Y
	American Asphalt	11 Equipment Operators & Truck Drivers,	Y
	Environmental Specialties, Inc	Liner Superintendent	N
	Environmental Specialties, Inc	12 Liner laborers	N
	Kenney Survey	Survey at Phase 1 CAMU	Y

# DAILY PRODUCTION & QUALITY CONTROL REPORT

Project No./Contract No.	Project Title / Location	Day of Report	Report No.
6389	BRC Eastside Common Areas Soils Remediation	30-Jul-08	35

	PBS&J Survey, QA	Survey at Phase 1 CAMU	Y	

## ON-SITE EQUIPMENT

Equipment	Vendor / Tag No.	Work Performed				
CAT D400E Dump Truck (1)		Eastside	-	-	-	-
JD D400 Dump Trucks (4)		Eastside		-	-	-
CAT 324D long stick excavator		No activity	-	-	-	-
CAT D8R Dozer with disc		Eastside		-	-	-
CAT 345 excavator		Eastside		-	-	-
CAT 330 Excavator		Eastside		-	-	-
Case double pan scrapers.		Eastside		-	-	-
CAT D6 LGP Dozer (2)		Eastside				-
Water Trucks (2)		Eastside				-
637/631 Cat Scrapers (6)		CAMU				-
CAT 16H Grader		CAMU				-
CAT D-10 Dozer		CAMU				-
CAT Water Wagon		CAMU				-
CAT D-6 Dozer		CAMU				-
CAT 14H Grader		CAMU				-
Gradall		CAMU				-
Bobcat Skidsteer		CAMU				-
JLG		CAMU				-
CAT D4 dozer		CAMU				-
						-
						-
						-

## MATERIAL HANDLING (ON-SITE DELIVERY / REMOVAL)

Material	Vendor	QTY	UOM	Purpose	Delivery Verification			
					Confin	Qty	Spec	Tags
GCL	CETCO	0	rolls	For CAMU				
Geocomposite 60 mil Liner	Agru	0	rolls	For CAMU				
HDPE Pipe	12" and 4" Pipe			for Phase 1				

## WORK COMPLETED

### Description of Work Executed Today

#### Eastside Mixing and Drying Activity:

- Loading out dried material from SW-4 using 345 excavator. (4) haul trucks hauling to beta ditch stockpile. 124 loads, (2,480) cy.
- Leveled material from SW-4 on staging area and beta ditch using D6 dozer..
- D8 Dozer diskings wet pond material that is spread over the dry ponds.
- Versatile tractor and pans transporting dried out material from CTR-2 and spreading at stockpile. 63 loads, (1890) cy.
- SW-8, 345 excavator cleaning discolored soils from slopes. Remediating per RFI - 019.
- Estimated dried material hauled to stockpiles: 108 loads, (2,376) cy daily, (TBD)cy cumulative.
- Welded 3" pipe for future pumping operations.

#### CAMU Activity:

##### Excavation

- Phase I, and phase II excavation continued Grading East slope, grading floor in preparation for liner installation. .
- Screener, screening soils for slopes, continued placement as needed. Long stick with roller attachment continued on East slope..
- Entact maintained 12" clean soil cap over west haul rd and bypass rd.
- Phase II, (1,100) cy daily.. (TBD) cumulative.

##### Embankment

- Phase 1 estimated daily embankment placed: 0 cy
- Phase 1 estimated cumulative embankment placed: 0 cy

##### Waste Placement

- Phase 1 estimated daily waste placed: 0 cy
- Phase 1 estimated cumulative waste placed: 0 cy

##### Geosynthetics

- Phase 1 GCL placed: 0 sf daily, 0 sf cumulative
- Phase 1 Geomembrane: 0 sf daily, 0 sf cumulative
- Phase 1 Geocomposite: 0 sf daily, 0 sf cumulative
- Phase 1 Geotextile: 0 sf daily, 0 sf cumulative

Other: Sewer Realignment: Berm work complete. Construction fence being installed, ongoing.

#### Perimeter Fence Inspection and Repair.

No Issues.

## DAILY PRODUCTION & QUALITY CONTROL REPORT

Project No./Contract No.	Project Title / Location	Day of Report	Report No.
6389	BRC Eastside Common Areas Soils Remediation	30-Jul-08	35

--

## HEALTH & SAFETY

Description of Health &amp; Safety Actions Taken Today / Safety Inspections Conducted

## Entact H&S Tailgates

Morning: Fire extinguishers inspection, (monthly).  
Afternoon: Skin protection.

## American Asphalt Tailgates

Morning: Slope Safety, Hydration.

## QUALITY CONTROL

Description of Quality Control Actions Taken Today / Quality Inspections Conducted

Daily CQA Summary

Inspected Liner staging area and covering, Ok  
 Inspected Phase 1 subgrade, floor on west side and west slope, Ok ready for final inspection.  
 Inspected 12" caps on haul rds, Ok.

Deviations from CQA Plan	
1	
2	
3	
4	
5	
6	
7	
8	
9	
10	
11	
12	
13	
14	
15	
16	
17	
18	
19	
20	
21	
22	
23	
24	
25	
26	
27	
28	
29	
30	
31	
32	
33	
34	
35	
36	
37	
38	
39	
40	
41	
42	
43	
44	
45	
46	
47	
48	
49	
50	
51	
52	
53	
54	
55	
56	
57	
58	
59	
60	
61	
62	
63	
64	
65	
66	
67	
68	
69	
70	
71	
72	
73	
74	
75	
76	
77	
78	
79	
80	
81	
82	
83	
84	
85	
86	
87	
88	
89	
90	
91	
92	
93	
94	
95	
96	
97	
98	
99	
100	

None

## ISSUES AND/OR ITEMS OF DISCUSSION

Discussion of Issues / Concerns / Conversations / Topics

CAMU: Northeast Retention Basin, Entact encountered discolored soils on first pass with scrapers, immediately shut down and notified Construction Manager. Construction manager, Geosyntec Engineers and BRC PM inspected.

## SITE VISITORS

[illegible]

Report Prepared By / Title	Date Prepared	Signature
----------------------------	---------------	-----------

Dick Laubinger, Construction Manager 30-Jul-08

Date Prepared \_\_\_\_\_ Signature \_\_\_\_\_

30-Jul-08

Signature \_\_\_\_\_



## DAILY PRODUCTION & QUALITY CONTROL REPORT

Project No./Contract No.	Project Title / Location	Day of Report	Report No.
<b>6389</b> 0	<b>BRC Eastside Common Areas Soils Remediation</b> 0	30-Jul-08	<b>35</b>

### DAILY PHOTO LOG

Photo 1



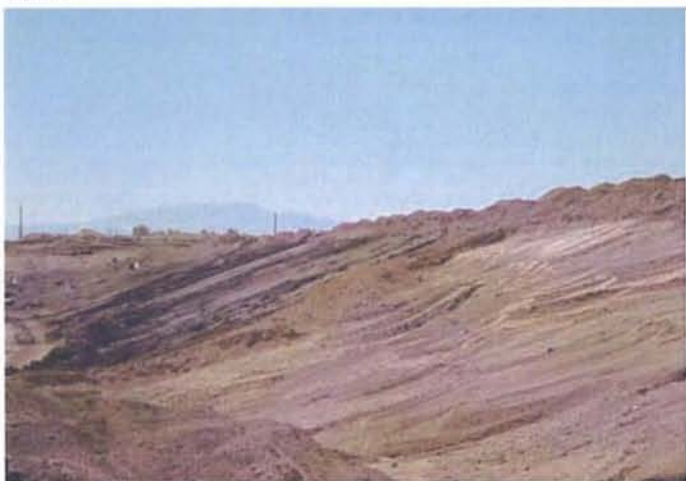
Eastside, SW-8, discolored soils. Being excavated from slopes.

Photo 2



CAMU, Phase 1, East slope grading preparation for liner.

Photo 3



Eastside, SW-8, half of slope has been remediated. Half to follow.

Photo 4



Eastside. Sewer realignment, fence installation.