

DAILY PRODUCTION & QUALITY CONTROL REPORT

Project No./Contract No.	Project Title / Location	Day of Report	Report No.
6389	BRC Eastside Common Areas Soils Remediation	20-Aug-08	53

PROJECT POINTS OF CONTACT

Position	Name	E-Mail Address	Phone No.
BRC PROJECT MANAGER	Lee Farris, On Site.	lfarris@landwellco.com	702-567-0400
BRC PROJECT MANAGER	Ranajit Sahu	sahuron@earthlink.net	702-567-0400
CONST. PROJECT MANAGER	Dan Brennecke	Dan.Brennecke@westonsolutions.	970-260-5886
Construction Manager	Richard Laubinger	Richard.Laubinger@westonsolutio	720-641-8660

WEATHER CONDITIONS

Conditions				Temp (°F)		Wind		Add'l Readings	
AM	Sunny/Clear	PM	Sunny/Clear	Low	78			Precip. (inches)	
				High	101	S	7mph	Humidity (%)	

Additional Weather Comments:

Light wind to 7 mph..

ON-SITE WESTON PERSONNEL

Name	Position	Trade / Work Performed	Y/N
Dick Laubinger	Construction Manager	Construction Management Services.	Y
Dan Brennecke	Project Manager. CM	Construction Management Services.	Y
Dave Gertz	Project Engineer	Construction Management Services.	Y
June Laubinger	Admin Assistant	Construction Management Services.	Y

ON-SITE GEOSYNTEC PERSONNEL

Name	Position	Trade / Work Performed	Y/N
Wayne Wofford	QA/QC Tech	Oversight	Y
Brent Barbacane	QA/QC Tech	Oversight	Y
Jim Cox	QA/QC Supervisor	Oversight	N
Greg Corcoran	Engineer of Record	Oversight	Y
Rebecca Flynn	Engineer	Oversight	N
Camon Liddell	QA/QC Tech	Oversight	Y

ON-SITE SUPPORT PERSONNEL

Name	Position	Trade / Work Performed	Y/N
Doug Herlocker, Tetra Tech	Air Monitoring Specialist	Air Monitoring	N
Becky Dano, Tetra Tech	Air Monitoring Specialist	Air Monitoring.	Y
Jerry Fauchaux, Tetra Tech	Air Monitoring Specialist	Air Monitoring.	Y
Linda Nations, BRC	BRC, QA Oversight	Site Monitoring, Progress and Security	Y

OVERSITE PERSONNEL

Name	Position	Trade / Work Performed	Y/N
Scott McKeag, McGinley	Oversight	For NDEP	N
Devin Gordon, McGinley	Oversight	For NDEP	Y
Dock Kim, ATC	Field Observation	For AIG	Y
Ron Perry, ASW	Inspector	For NDEP, On site for OPS layer placement beginning	Y
PBS&J, Survey	Surveyors		N
Brian Rakvica	NDEP	Weekly Meeting, Site Visit.	Y

ON-SITE CONTRACTOR PERSONNEL

Name	Company	Trade / Work Performed	Y/N
Erik Geringer	Entact	Project Manager	Y
Josh Carrol	Entact	Asst Project Manager	Y
Russ Karnes	Entact	Eastside, Superintendent	Y
Michael Carlson	Entact	Engineer	Y
Joe Curilla	Entact	Health & Safety Officer	Y
Michael Parker	Entact	Health and Safety Technician	Y
	Entact	18 Equipment Operators & Truck Drivers	Y
Ed Long	Entact	CAMU, Superintendent	Y
	American Asphalt	Earthwork Superintendent	Y
	American Asphalt	11 Equipment Operators & Truck Drivers,	Y
Rick McIntire	Entact	CSP, Safety	N
	Environmental Specialties, Inc	Liner Superintendent	Y
	Environmental Specialties, Inc	12 Liner laborers	Y
	Kenney Survey	CAMU	Y

DAILY PRODUCTION & QUALITY CONTROL REPORT

Project No./Contract No.	Project Title / Location	Day of Report	Report No.
6389	BRC Eastside Common Areas Soils Remediation	20-Aug-08	53

ON-SITE EQUIPMENT

Equipment	Vendor / Tag No.	Work Performed				
CAT D400E Dump Truck (2)		CAMU	-	-	-	-
JD D400 Dump Trucks (6)		Eastside		-	-	-
CAT 324D long stick excavator		CAMU	-	-	-	-
CAT D8R Dozer with disc		Eastside		-	-	-
CAT 345 excavator		Eastside		-	-	-
CAT 330 Excavator		Eastside		-	-	-
Case double pan scrapers.		Eastside		-	-	-
CAT D6 LGP Dozer (2)		Eastside				-
Water Trucks (2)		Eastside				-
637/631 Cat Scrapers (6)		CAMU				-
CAT 16H Grader		CAMU				-
CAT D-10 Dozer		CAMU				-
CAT Water Wagon		CAMU				-
CAT D-6 Dozer		CAMU				-
CAT 14H Grader		CAMU				-
Gradall		CAMU				-
Bobcat Skidsteer		CAMU				-
JLG		CAMU				-
CAT D4 dozer		CAMU				-
						-
						-
						-

MATERIAL HANDLING (ON-SITE DELIVERY / REMOVAL)

Material	Vendor	QTY	UOM	Purpose	Delivery Verification			
GCL	CETCO	0	rolls	For CAMU	Condn	Qty	Spec	Tags
Geocomposite	Agro	0	rolls	For CAMU				
Woven Geotextile		0	rolls	For CAMU				

WORK COMPLETED

Description of Work Executed Today:

Eastside Mixing and Drying Activity:

- Loading out wet material from SW-4 using 345 excavator. (4) haul trucks hauling to dry ponds. 210 loads, (4,200) cy.
- Leveled material from SW-4 on HP-3 and beta ditch using D6 dozer..
- D8 Dozer pushed up previously spread material that has dried out. Then resumed disking operation.
- Versatile tractor and pans transporting dried material from WST-5 and spreading at stockpile. 93 loads, (2,430) cy. 2 tractors..
- Motorgrader maintaining roads. Water truck managing dust control.
- Final cleanup scraping in SW-6, 48 loads, (1,738) cy, 2 trucks.

CAMU Activity:

Excavation

- Phase 2 Excavation. Mobilized breaker, continued potholing (4) locations on West side floor.
- Northwest Detention Basin excavation - 631/637 scrapers - (3,500) cy 3 scrapers.
- Western Ditch, continue excavation and screening operation.
- Entact maintained 12" clean soil cap over west haul rd and bypass rd.
- Converse drill rig, test boring at slit trench for shoring plan.

Embankment

- Phase 1 embankment, complete.
- Phase 1 estimated cumulative embankment placed: 0 cy

Waste Placement

- Phase 1 estimated daily waste placed: 0 cy
- Phase 1 estimated cumulative waste placed: 0 cy
- Phase 1 Operations Layer placement, 30 loads @ 20 cy/load = (600) cy.

Geosynthetics

- Phase 1 Liner crew installed Geotextile.
- Phase 1 GCL placed: 0 sf daily, 347,067 sf cumulative.
- Phase 1 Geomembrane:0 sf daily, 365,136 sf cumulative
- Phase 1 Geocomposite: 0 sf daily, 327,600 sf cumulative.
- Phase 1 Geotextile: (13,068) sf daily.

Other:

DAILY PRODUCTION & QUALITY CONTROL REPORT

Project No./Contract No.	Project Title / Location	Day of Report	Report No.
6389	BRC Eastside Common Areas Soils Remediation	20-Aug-08	53

Perimeter Fence Inspection and Repair,
No Issues,

HEALTH & SAFETY

<i>Description of Health & Safety Actions Taken Today / Safety Inspections Conducted</i>					

Entact H&S Tailgates

Morning: Hazardous Communications, Employee Access to information.

ESI, Liner Crew: Working on slopes, proper footing.

Afternoon: Personal Decon, Keep trailer clean..

American Asphalt Tailgates

Morning: Employee parking all vehicles on CAMU property, not adjacent parking lot next door.

Safety Incidents: No incidents.

QUALITY CONTROL

Description of Quality Control Actions Taken Today / Quality Inspections Conducted

Daily CQA Summary:

Monitored Operations layer placement, Phase 1.

Inspected 12" capped haul roads for degradation. All areas ok.

Liner crew installed Geotextile on slopes. Inspected and documented.

Operations layer placement stopped at 9:15 AM, due to wrinkles developing from heat.

Dust: Met requirements.

Deviations from CQA Plan	
1	
2	
3	
4	
5	
6	
7	
8	
9	
10	
11	
12	
13	
14	
15	
16	
17	
18	
19	
20	
21	
22	
23	
24	
25	
26	
27	
28	
29	
30	
31	
32	
33	
34	
35	
36	
37	
38	
39	
40	
41	
42	
43	
44	
45	
46	
47	
48	
49	
50	
51	
52	
53	
54	
55	
56	
57	
58	
59	
60	
61	
62	
63	
64	
65	
66	
67	
68	
69	
70	
71	
72	
73	
74	
75	
76	
77	
78	
79	
80	
81	
82	
83	
84	
85	
86	
87	
88	
89	
90	
91	
92	
93	
94	
95	
96	
97	
98	
99	
100	

None

ISSUES AND/OR ITEMS OF DISCUSSION

Discussion of Issues / Concerns / Conversations / Topics

CAMU: Burrowing Owls sited, (4).

[illegible]

Report Prepared By / Title	Date Prepared	Signature
----------------------------	---------------	-----------

Dick Laubinger, Construction Manager 20-Aug-08

Date Prepared	Signature
---------------	-----------

20-Aug-08

Signature _____

Basic Remediation Company

875 West Warm Springs Road
Henderson, Nevada 89011

DAILY PRODUCTION & QUALITY CONTROL REPORT

Project No./Contract No.	Project Title / Location	Day of Report	Report No.
6389 0	BRC Eastside Common Areas Soils Remediation 0	20-Aug-08	53

DAILY PHOTO LOG

Photo 1



CAMU, Test boring for Shoring Plan.

Photo 2



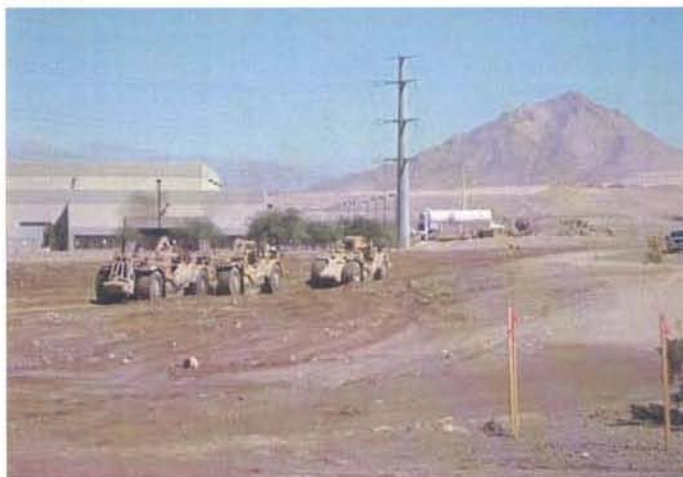
CAMU: Western Ditch excavation and screening operation.

Photo 3



CAMU: Phase 1 Operations layer being placed.

Photo 4



CAMU: Northwest Detention Basin excavation.