

DAILY PRODUCTION & QUALITY CONTROL REPORT

Project No./Contract No.	Project Title / Location	Day of Report	Report No.
6389	BRC Eastside Common Areas Soils Remediation	07-Dec-08	151

PROJECT POINTS OF CONTACT

Position	Name	E-Mail Address	Phone No.
BRC PROJECT MANAGER	Lee Farris	lfarris@landwellco.com	702-567-0400
BRC PROJECT MANAGER	Ranajit Sahu	sahuron@earthlink.net	702-567-0400
CONST. PROJECT MANAGER	Dan Brennecke	Dan.Brennecke@westonsolutions.com	970-260-5886
Construction Manager	Richard Laubinger	Richard.Laubinger@westonsolution.com	720-641-8660

WEATHER CONDITIONS

Conditions				Temp (°F)		Wind		Add'l Readings	
AM	Cloudy	PM	Cloudy	Low	38			Precip. (in/Dy.)	
				High	55	ESE	5mph	Humidity (%)	
Additional Weather Comments 0 mph, in AM. Light Wind in PM.									

ON-SITE WESTON PERSONNEL

Name	Position	Trade / Work Performed	Y/N	
Dick Laubinger	Construction Manager	Construction Management Services.	N	
Dan Brennecke	Project Manager. CM	Construction Management Services.	N	
Richard Davis	Project Engineer	Construction Management Services.	N	
Chris White	Assist. Const. Mgr	Construction Management Services.	N	
Wayne Hodgson	Assist. Const. Mgr	Construction Management Services.	Y	
Kevin Cooke	Assist. Const. Mgr	Construction Management Services.	Y	
June Laubinger	Admin Assistant	Construction Management Services.	N	

ON-SITE GEOSYNTEC PERSONNEL

Name	Position	Trade / Work Performed	Y/N	
Greg Corcoran	Design Engineer	Oversight	N	
Dan Street	QA Manager	Oversight	N	
Jim Cox	QA/QC Supervisor	Oversight	N	
Rebecca Flynn	Engineer	Oversight	N	
Wayne Wofford	QA/QC Tech	Oversight	N	
Roland Derosier	QA/QC Tech	Oversight	N	
Camon Liddell	QA/QC Tech	Oversight	N	
Jeremy Osborn	QA/QC Tech	Oversight	Y	

ON-SITE SUPPORT PERSONNEL

Name	Position	Trade / Work Performed	Y/N	
Doug Herlocker, Tetra Tech	Air Monitoring Specialist	Air Monitoring.	N	
Becky Dano, Tetra Tech	Air Monitoring Specialist	Air Monitoring.	N	
Jerry Fauchaux, Tetra Tech	Air Monitoring Specialist	Air Monitoring	N	

OVERSITE PERSONNEL

Name	Position	Trade / Work Performed	Y/N	
Mark Eizman, ASW	Inspector	Liner Inspector	N	
Devin Gordon, McGinley	Oversight	For NDEP	N	
Dock Kim, ATC	Field Observation	For AIG	N	
Joe Ludlow, ASW	Inspector	Liner Inspector	N	
Steve Morrow, ASW	Inspector	Liner Inspector	N	
Brian Rakvica	Inspector	NDEP, Site visit	N	
PBS&J, Survey	Surveyors	Surveying, QA	N	

ON-SITE CONTRACTOR PERSONNEL

Name	Company	Trade / Work Performed	Y/N	
Erik Geringer	Entact	Project Manager	Y	
Josh Carrol	Entact	Asst Project Manager	N	
Russ Karnes	Entact	Eastside, Superintendent	Y	
Michael Carlson	Entact	Engineer	N	
Joe Curilla	Entact	Health & Safety Officer	Y	
Timothy Stadt	Entact	Health and Safety Technician	N	
	Entact	17 Equipment Operators & Truck Drivers	Y	
Ed Long	Entact	CAMU, Superintendent	N	
Lance Bruce	Entact	Health & Safety Officer	Y	
Terry Harper	Entact	CAMU, Superintendent	Y	
Rick McIntire	Entact	CSP, Safety	N	
Dale Walsh	Converse	CSP, Safety	N	

DAILY PRODUCTION & QUALITY CONTROL REPORT

Project No./Contract No.	Project Title / Location	Day of Report	Report No.
6389	BRC Eastside Common Areas Soils Remediation	07-Dec-08	151

Eli Blackburn	Entact	Asst Project Manager	N	
	Environmental Specialties, Inc	1 Liner Superintendent	N	
	Environmental Specialties, Inc	12 Laborers/ Seamers	N	
	Kenney Survey	CAMU	N	
	ABC Survey	Eastside/CAMU	N	

ON-SITE EQUIPMENT

Equipment	Vendor / Tag No.	Work Performed				
CAT D400E Dump Truck (2)		CAMU	-	-	-	-
JD D400 Dump Trucks (8)		Eastside		-	-	-
CAT 324D long stick excavator		CAMU	-	-	-	-
CAT D8R Dozer with disc		Eastside		-	-	-
CAT 345 excavator		Eastside		-	-	-
CAT 330 Excavator		Eastside		-	-	-
Case double pan scrapers.		Eastside		-	-	-
CAT D6 LGP Dozer (2)		Eastside				-
Water Trucks (2)		Eastside				-
637/631 Cat Scrapers (6)		CAMU				-
CAT 16H Grader		CAMU				-
CAT D-10 Dozer		CAMU				-
CAT Water Wagon		CAMU				-
CAT D-6 Dozer		CAMU				-
CAT 14H Grader		CAMU				-
Gradall		CAMU				-
JLG		CAMU				-
IR Smooth drum Roller		CAMU, Phase 1				-
Tenent Street Sweeper		Eastside and CAMU				-
Bomag Smooth drum Roller		CAMU, Phase 1				-
Chieftain 1400 Powerscreener		Eastside, screening 1" minus				-
						-

MATERIAL HANDLING (ON-SITE DELIVERY / REMOVAL)

Material	Vendor	Today	UOM	Purpose	Delivery Verification			
					to date	Qty	Spec	Tags
GCL	CETCO	0	rolls	For CAMU, On site		506		
Geocomposite	Agru	0	rolls	For CAMU, On site		599		
Geomembrane	Agru	0	rolls	For CAMU, On site		192		

WORK COMPLETED

Description of Work Executed Today

Eastside Mixing and Drying Activity:

- Day Shift:
- No Activity.
- Night Shift:
- Continued hauling operations layer material from beta stockpile to Phase II.

CAMU Activity:

- Day Shift:
- No Activity.
- Night Shift:
- Continued placing operations layer material second lift in Phase II.

Embankment

- Phase 1 embankment, complete.
- Phase 1 estimated cumulative embankment placed: 0 cy

Waste Placement

- Phase 1 estimated daily waste placed: 0 loads @ 20cy/load = 0 cy.
- night shift placed: 0 loads @ 20cy/load = 0 cy.
- Phase 1 estimated cumulative waste placed: 210,898 cy. Western Ditch, NE Equilization, Eastside beta stockpile and PUA-4.PUB-3.
- Phase 1 Operations Layer placed. completed. Cumulative total: 21,662
- Phase 2 estimated night shift placed: 238 loads @ 20cy/load = 4,760 cy.
- Phase 2 Operations Layer placed. daily: 4,760 cy. Cumulative total: 36,420 cy.

Geosynthetics. Estimated cumulative installed quantity by Phase.

- Phase 1 GCL placed: 0 sf daily, 307,372 sf cumulative.
- Phase 1 Geomembrane: 0 sf daily, 307,372 sf cumulative
- Phase 1 Geocomposite: 0 sf daily, 307,372 sf cumulative.
- Phase 1 Geotextile: (0) sf daily, 69,340 sf cumulative.
- Phase 2 GCL placed: (0) sf daily, 498,468 sf cumulative.

DAILY PRODUCTION & QUALITY CONTROL REPORT

Project No./Contract No.	Project Title / Location	Day of Report	Report No.
6389	BRC Eastside Common Areas Soils Remediation	07-Dec-08	151

-Phase 2 Geomenbrane: (0) sf daily, 498,468 sf cumulative.
-Phase 2 Geocomposite: (0) sf daily, 520,592 sf cumulative.

Other:

HEALTH & SAFETY

Description of Health & Safety Actions Taken Today / Safety Inspections Conducted

Entact H&S Tailgates

Safety Topic: Eastside: No Activity.

Safety Topic: CAMU, Day: No Activity.

Eastside and CAMU, Night shift: Pressure washer safety, Communication between people on foot and those inside equipment.

Safety Incidents: None.

Dust Incidents: None.

CONSTRUCTION QUALITY ASSURANCE & QUALITY CONTROL

Description of Quality Control Actions Taken Today / Quality Inspections Conducted

Daily CQA Summary..

Monitored operations layer placement in Phase II. (night shift).

ISSUES AND/OR ITEMS OF DISCUSSION

Discussion of Issues / Concerns / Conversations / Topics

SITE VISITORS

[illegible]

Report Prepared By / Title	Date Prepared	Signature
----------------------------	---------------	-----------

Dick Laubinger, Construction Manager 7-Dec-08

Date Prepared	Signature
---------------	-----------

7-Dec-08

Signature _____

Basic Remediation Company

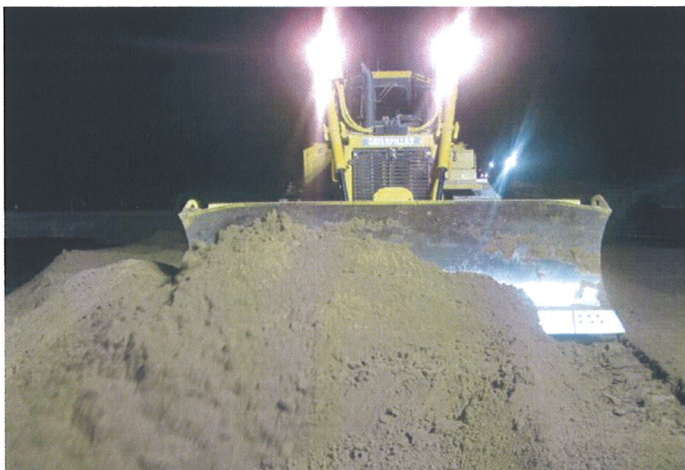
875 West Warm Springs Road
Henderson, Nevada 89011

DAILY PRODUCTION & QUALITY CONTROL REPORT

Project No./Contract No.	Project Title / Location	Day of Report	Report No.
6389 0	BRC Eastside Common Areas Soils Remediation 0	07-Dec-08	151

DAILY PHOTO LOG

Photo 1



CAMU: D6 Dozer pushing and placing operations layer.

Photo 2



Eastside: Decon Pad.

Photo 3



3.5-Inch Width or 2.63-Inch Height

Photo 4



3.5-Inch Width or 2.63-Inch Height