

DAILY PRODUCTION & QUALITY CONTROL REPORT

Project No./Contract No.	Project Title / Location	Day of Report	Report No.
6389	BRC Eastside Common Areas Soils Remediation	09-Jan-09	180

PROJECT POINTS OF CONTACT

Position	Name	E-Mail Address	Phone No.
BRC PROJECT MANAGER	Lee Farris	lfarris@landwellco.com	702-567-0400
BRC PROJECT MANAGER	Ranajit Sahu	sahuron@earthlink.net	702-567-0400
CONST. PROJECT MANAGER	Dan Brennecke	Dan.Brennecke@westonsolutions.com	970-260-5886
Construction Manager	Richard Laubinger	Richard.Laubinger@westonsolution.com	720-641-8660

WEATHER CONDITIONS

Conditions				Temp (F)	Wind	Add'l Readings	
AM	Sunny/Clear	PM	Sunny/Clear	Low 48	NNE 15mph	Precip. (in/Dy)	Humidity (%)
				High 57			

Additional Weather Comments

Light wind in AM to approx 15 mph in PM.

ON-SITE WESTON PERSONNEL

Name	Position	Trade / Work Performed	Y/N
Dick Laubinger	Construction Manager	Construction Management Services.	Y
Dan Brennecke	Project Manager. CM	Construction Management Services.	N
Richard Davis	Project Engineer	Construction Management Services.	Y
Chris White	Assist. Const. Mgr	Construction Management Services.	Y
Wayne Hodgson	Assist. Const. Mgr	Construction Management Services.	Y
Kevin Cooke	Assist. Const. Mgr	Construction Management Services.	Y
June Laubinger	Admin Assistant	Construction Management Services.	Y

ON-SITE GEOSYNTEC PERSONNEL

Name	Position	Trade / Work Performed	Y/N
Greg Corcoran	Design Engineer	Oversight	N
Dan Street	QA Manager	Oversight	Y
Jim Cox	QA/QC Supervisor	Oversight	N
Robecca Flynn	Engineer	Oversight	N
Wayne Wofford	QA/QC Tech	Oversight	N
Roland Derosier	QA/QC Tech	Oversight	Y
Camon Liddell	QA/QC Tech	Oversight	Y
Jeremy Osborn	QA/QC Tech	Oversight	Y
Victor Heredia	QA/QC Tech	Oversight	Y

ON-SITE SUPPORT PERSONNEL

Name	Position	Trade / Work Performed	Y/N
Doug Herlocker, Tetra Tech	Air Monitoring Specialist	Air Monitoring	N
Becky Dano, Tetra Tech	Air Monitoring Specialist	Air Monitoring.	Y
Jerry Fauchaux, Tetra Tech	Air Monitoring Specialist	Air Monitoring	N

OVERSITE PERSONNEL

Name	Position	Trade / Work Performed	Y/N
Mark Eizman, ASW	Inspector	Liner Inspector	Y
Devin Gordon, McGinley	Oversight	For NDEP	Y
Dock Kim, ATC	Field Observation	For AIG	Y
Joe Ludlow, ASW	Inspector	Liner Inspector	N
Steve Morrow, ASW	Inspector	Liner Inspector	N
Brian Rakvica	Inspector	NDEP	N
PBS&J, Survey	Surveyors	Surveying, QA	N

ON-SITE CONTRACTOR PERSONNEL

Name	Company	Trade / Work Performed	Y/N
Erik Geringer	Entact	Project Manager	N
Josh Carol	Entact	Asst Project Manager	Y
Russ Karnes	Entact	Eastside, Superintendent	Y
Michael Carlson	Entact	Engineer	Y
Joe Curilla	Entact	Health & Safety Officer	Y
Timothy Stadt	Entact	Health and Safety Technician	Y
	Entact	26 Equipment Operators & Truck Drivers	Y
Ed Long	Entact	CAMU, Superintendent	Y
Lance Bruce	Entact	Health & Safety Officer	Y
Terry Harper	Entact	CAMU, Superintendent	Y
Rick McIntire	Entact	CSP, Safety	Y
Dale Walsh	Converse	CSP, Safety	N

DAILY PRODUCTION & QUALITY CONTROL REPORT

Project No./Contract No.	Project Title / Location	Day of Report	Report No.
6389	BRC Eastside Common Areas Soils Remediation	09-Jan-09	180

Eli Blackburn	Entact	Asst Project Manager	Y	
	Environmental Specialties, Inc	1 Liner Superintendent	Y	
	Environmental Specialties, Inc	12 Laborers/ Seamers	Y	
	Kenney Survey	CAMU	N	
	ABC Survey	Eastside/CAMU, Mohawk Drive.	N	

ON-SITE EQUIPMENT

Equipment	Vendor / Tag No.	Work Performed				
CAT D400E Dump Truck (10)		CAMU	-	-	-	-
JD D400 Dump Trucks (9)		Eastside		-	-	-
CAT 324D long stick excavator		CAMU	-	-	-	-
CAT D8R Dozer with disc		Eastside		-	-	-
CAT 345 excavator, (3)		Eastside		-	-	-
CAT 330 Excavator		Eastside		-	-	-
Case double pan scrapers.		Eastside		-	-	-
CAT D6 LGP Dozer (1)		Eastside				-
Water Trucks (2)		Eastside				-
637/631 Cat Scrapers (2)		CAMU				-
CAT 16H Grader		CAMU				-
CAT D-10 Dozer		CAMU				-
CAT Water Trucks (2)		CAMU				-
CAT D-6 Dozer, (2)		CAMU				-
CAT 14H Grader		CAMU				-
Gradall		CAMU				-
JLG		CAMU				-
IR Smooth drum Roller		CAMU, Phase 1				-
Tenent Street Sweeper		Eastside and CAMU				-
Bomag Smooth drum Roller		CAMU, Phase 1				-
Chieftain 1400 Powerscreener		CAMU, screening 1" & 6" minus				-
						-

MATERIAL HANDLING (ON-SITE DELIVERY / REMOVAL)

Material	Vendor	Today	UOM	Purpose	Delivery Verification			
					to date	Qty	Spec	Tags
GCL	CETCO	49	rolls	For CAMU, On site		781		
Geocomposite	Agro	0	rolls	For CAMU, On site		697		
Geomembrane	Agro	0	rolls	For CAMU, On site		236		

WORK COMPLETED

Description of Work Executed Today

Eastside Mixing and Drying Activity:

- Day Shift:
- Continued hauling dry soils from PUB-4 to SW-2 and mixing/drying material.
- Continue pumping water from SW-7 to SW-12.
- Continue additional excavation below design grades in PUB-4, removing impacted soils, under the supervision of Weston representative.
- Night Shift:
- Continued hauling material from HP-3/HP-2 and PUC-3.

CAMU Activity:

- Day Shift:
- ESI continued placing GCL and Geomembrane on North BMI Landfill.
- Continued excavating contaminated soil from NW Detention Basin/Phase IIIB trench and placing in Phase I.
- Continued screening cover soils from North BMI Landfill from 200,000 cy stockpile.
- Continued hauling/placing 1" and 6" minus cover soils on North BMI Landfill.
- Received and off loaded additional rolls of geosynthetics.
- Night Shift:
- Continued placing material in Phase II.

Embankment

- Phase 1 embankment, complete.
- Phase 1 estimated cumulative embankment placed: 0 cy
- Phase II embankment, complete.

Waste Placement

- Phase 1 estimated daily waste placed, Phase IIIB Trench: 71 loads @ 20 cy/load = 1,420 cy. (2 trucks).
- night shift placed: (0) loads @ 18cy/load = 0 cy.
- Phase 1 estimated cumulative waste placed: 286,760 cy.
- Phase 1 Operations Layer placed. completed. Cumulative total: 21,662
- Phase 2 estimated night shift placed: 262 loads @ 18cy/load = 4,716 cy. (18 trucks).
- Phase 2 Operations Layer placed. daily: 0 cy. Cumulative total: 37,188 cy.
- Phase 2 estimated cumulative waste placed: 59,976 cy.

Geosynthetics. Estimated cumulative installed quantity by Phase.

- Phase 1 GCL placed: 0 of daily 367 372 of cumulative

DAILY PRODUCTION & QUALITY CONTROL REPORT

Project No./Contract No.	Project Title / Location	Day of Report	Report No.
6389	BRC Eastside Common Areas Soils Remediation	09-Jan-09	180

- Phase 1 GCL placed: 0 sf daily, 307,372 sf cumulative.
- Phase 1 Geomembrane: 0 sf daily, 307,372 sf cumulative
- Phase 1 Geocomposite: 0 sf daily, 3,372 sf cumulative.
- Phase 1 Geotextile: (0) sf daily, 69,340 sf cumulative.
- Phase 2 GCL placed: (0) sf daily, 498,468 sf cumulative.
- Phase 2 Geomembrane: (0) sf daily, 498,468 sf cumulative.
- Phase 2 Geocomposite: (0) sf daily, 520,592 sf cumulative.
- BMI North Landfill GCL placed: (30,000) sf daily, 760,838 sf cumulative.
- BMI North Landfill Geomembrane: (30,000) sf daily, 760,838 sf cumulative.
- BMI North Landfill Geocomposite: (0) sf daily, (390,000) sf cumulative.

Other:

HEALTH & SAFETY

Date	Description of Health & Safety Actions Taken Today / Safety Inspections Conducted

Entact H&S Tailgates

Safety Topic: Eastside, Day: Cell phones not allowed while operating equipment or driving trucks.

Safety Topic: CAMU, Day: Cell phones not allowed while operating equipment or driving trucks.

Eastside and CAMU, Night: Stop work authority is for both large and small tasks

Safety Incidents: Minor scratch on car from sign due to wind.

Dust Incidents: No incidents, However winds picked up in the afternoon. Both Eastside and CAMU water trucks concentrated on watering sites.

CONSTRUCTION QUALITY ASSURANCE & QUALITY CONTROL

Description of Quality Control Actions Taken Today / Quality Inspections Conducted	
1	2
3	4
5	6
7	8
9	10
11	12
13	14
15	16
17	18
19	20
21	22
23	24
25	26
27	28
29	30
31	32
33	34
35	36
37	38
39	40
41	42
43	44
45	46
47	48
49	50
51	52
53	54
55	56
57	58
59	60
61	62
63	64
65	66
67	68
69	70
71	72
73	74
75	76
77	78
79	80
81	82
83	84
85	86
87	88
89	90
91	92
93	94
95	96
97	98
99	100

Daily CQA Summary.

Monitored waste placement of impacted materials from NW Basin/Phase IIIB trench excavation into Phase I. (Day Shift).

Monitored waste placement of Eastside material into phase II. (Night Shift).

Monitor installation of geosynthetics at the North BMI Landfill.

Monitor screening of 1" and 6" minus protective cover soils.

Monitor installation of protective cover soils at the North BMI Landfill.

Continue review of and updating of project documents and database to facilitate reporting.

Inventory and monitor incoming delivery of geosynthetics.

ISSUES AND/OR ITEMS OF DISCUSSION

Discussion of Issues / Concerns / Conversations / Topics

SITE VISITORS

[illegible]

Report Prepared By / Title	Date Prepared	Signature
----------------------------	---------------	-----------

Richard Laubinger, Construction Manager 9-Jan-09

Date Prepared	Signature
---------------	-----------

9-Jan-09

Signature _____

Basic Remediation Company

875 West Warm Springs Road
Henderson, Nevada 89011

DAILY PRODUCTION & QUALITY CONTROL REPORT

Project No./Contract No.	Project Title / Location	Day of Report	Report No.
6389 0	BRC Eastside Common Areas Soils Remediation 0	09-Jan-09	180

DAILY PHOTO LOG

Photo 1

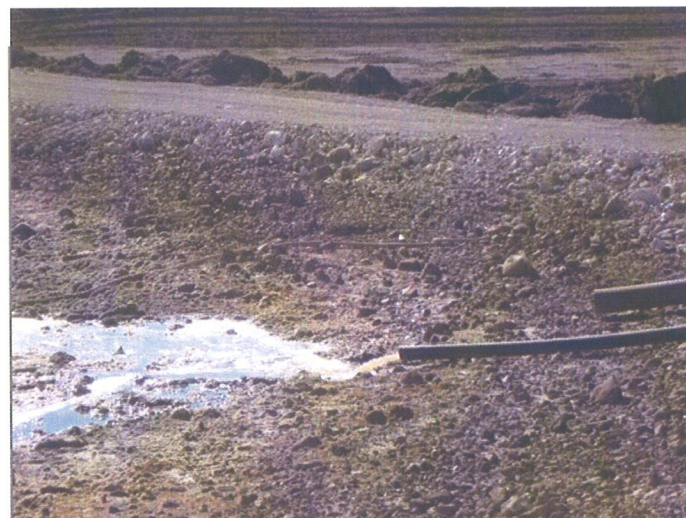


CAMU: NW Basin/Phase IIIB excavation, first 8 foot cut.

Photo 2



CAMU: NW Basin/Phase IIIB excavation, next cut. Looking Northwest.



Eastside: SW-12 pond receiving water from SW-7 pond.



Eastside: PUB-4, addition excavation, removing discolored material only where needed.