

BRC RAC Meeting

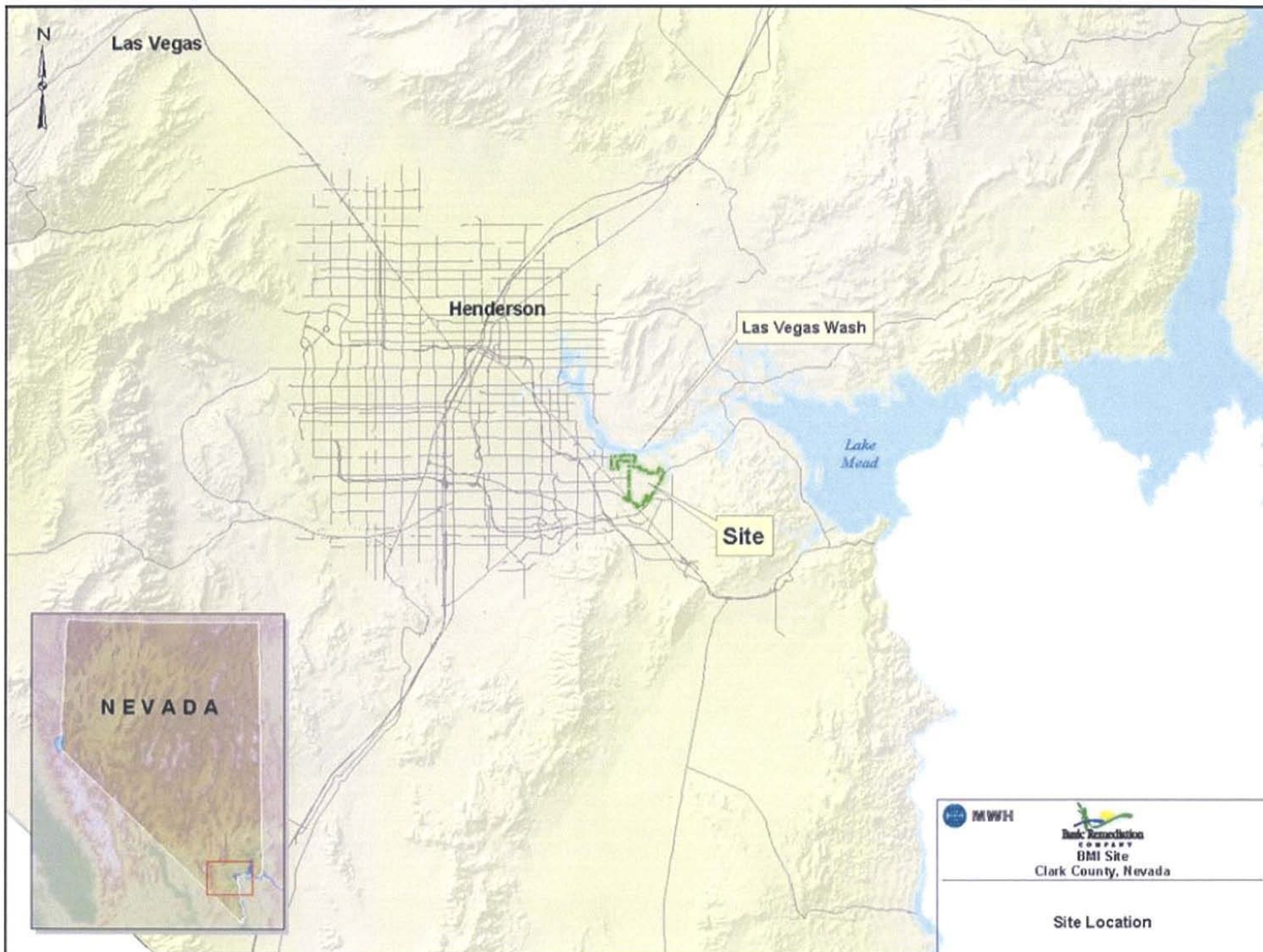
Dr. Ranajit (Ron) Sahu

Project Manager

July 10, 2008

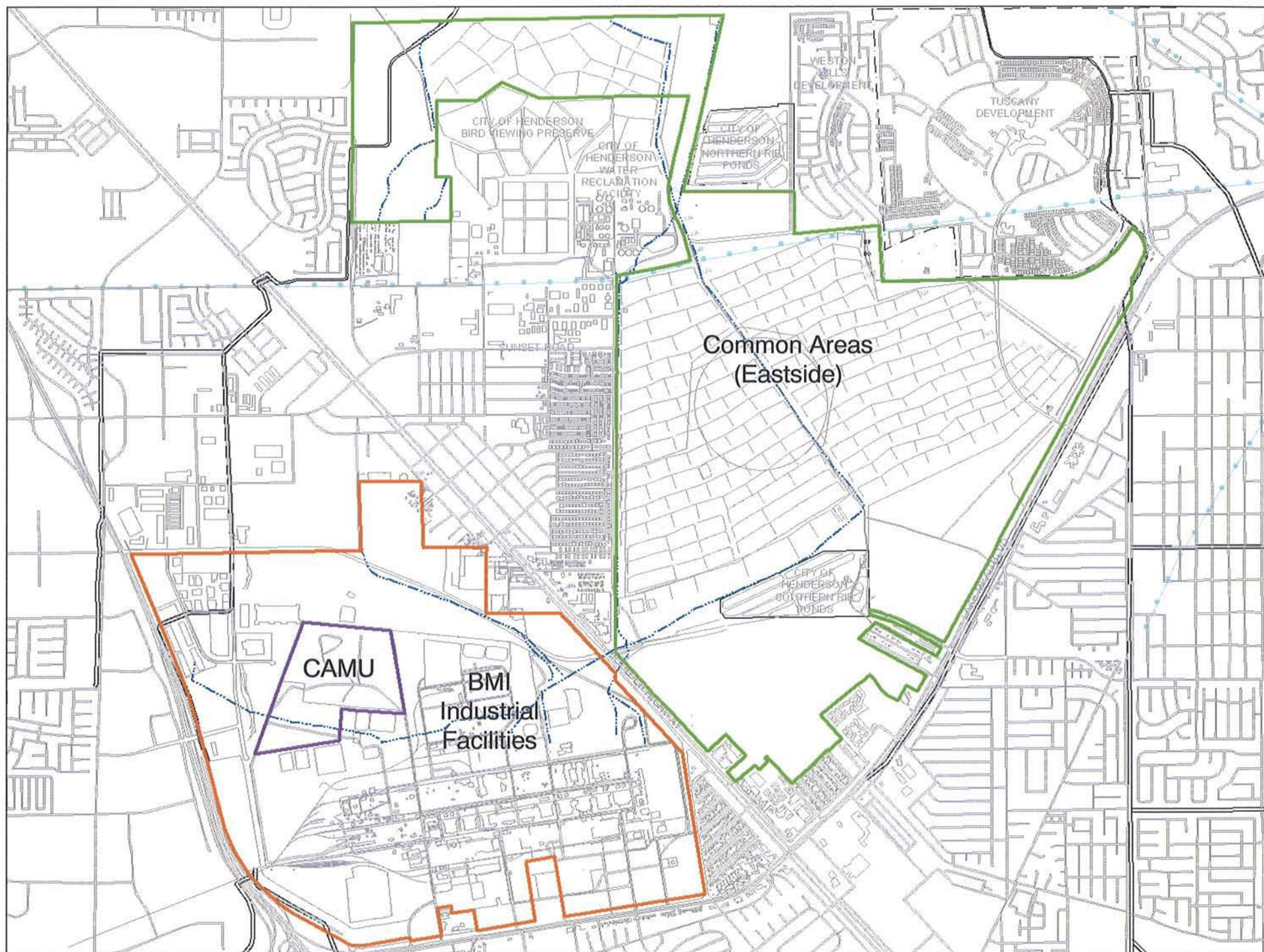
Topics

- Introductions and Approval of Minutes (Transcript)
- Remediation Update
- Other Work Update
- Planned Activities
- Next Meeting – October 9, 2008



Bioscience Resource Project
BMI Site
Clark County, Nevada

Site Location



Remediation Update

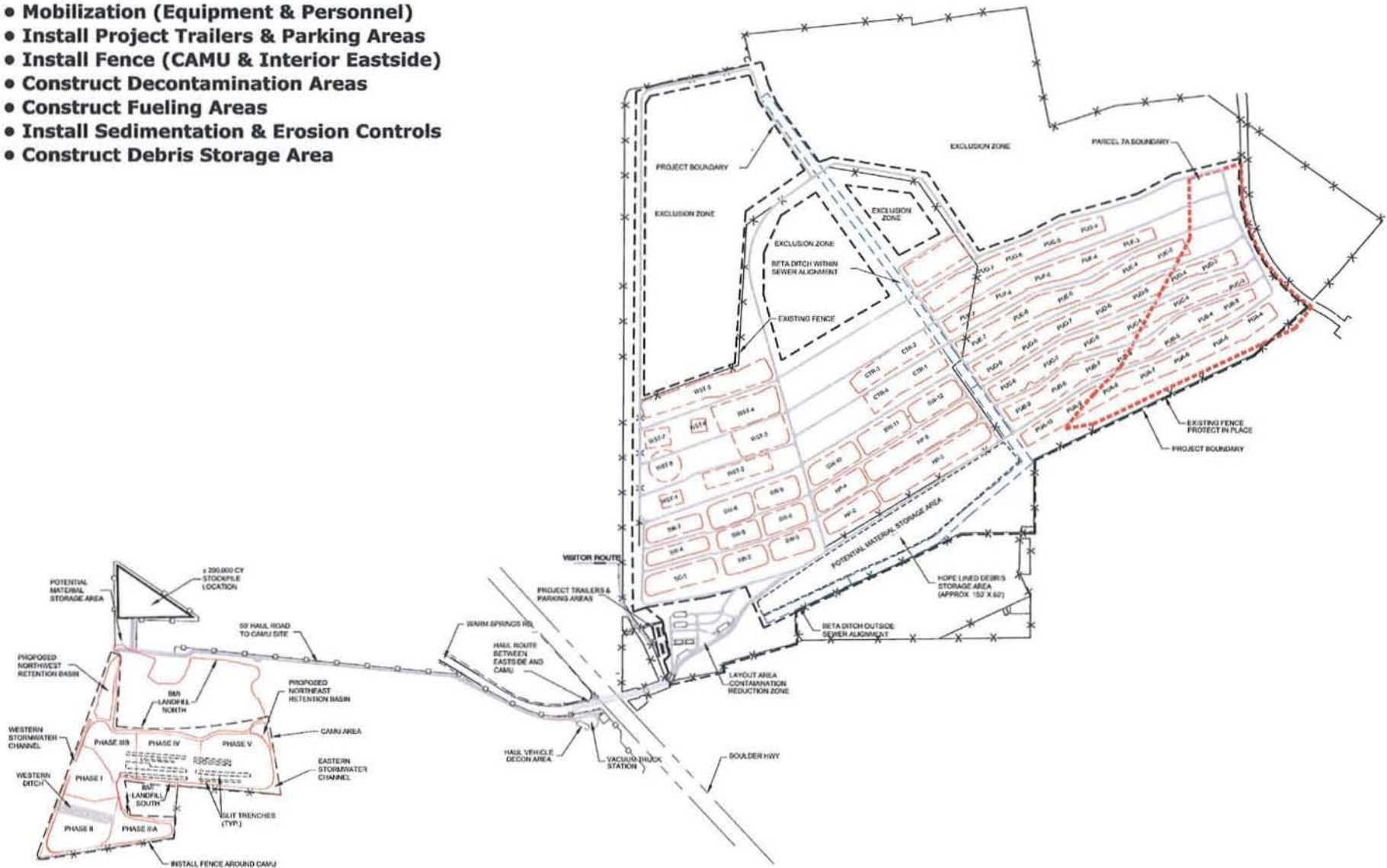
- Baseline Air Monitoring Completed
 - Phase II (next 60 days) Monitoring beginning approx. 7/23
- ENTACT Pilot Project Concluded
 - Focused on TIMET ponds
 - Roughly 90 days
 - Excavation Activities in 14 out of 15 ponds
 - Evaluation of material properties, drying variables
- Mobilization in Progress
 - Construction trailers (Contractor, BRC, Weston, Oversight teams)
 - Fencing, security, utilities
- Transitioning to Remediation
 - Finish Grading (CAMU Phase I)
 - Stormwater Controls (Eastside // CAMU)
 - Liner Installation beginning 7/17



March 2008



- Mobilization (Equipment & Personnel)
- Install Project Trailers & Parking Areas
- Install Fence (CAMU & Interior Eastside)
- Construct Decontamination Areas
- Construct Fueling Areas
- Install Sedimentation & Erosion Controls
- Construct Debris Storage Area

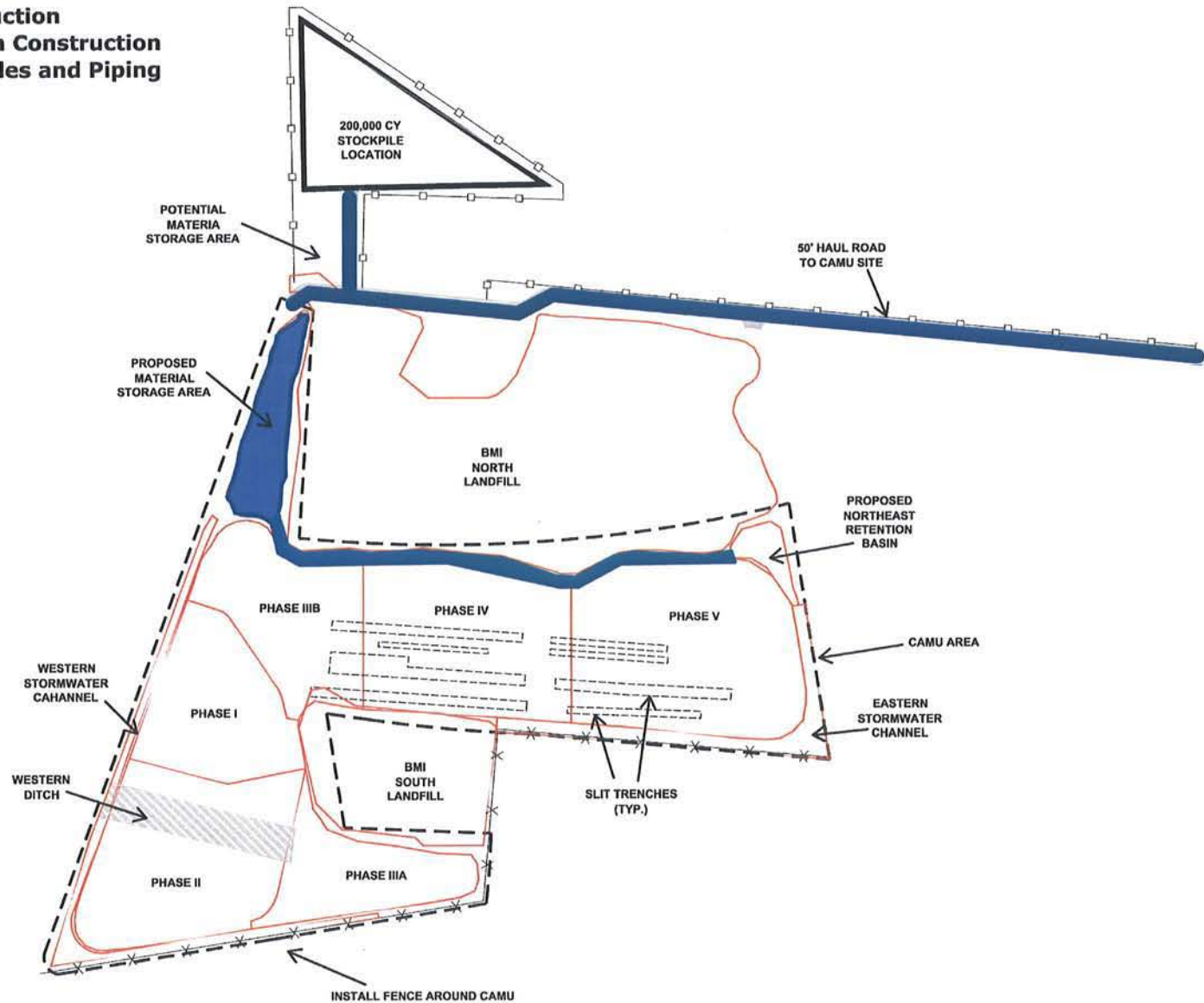


2008										2009												2010		
Mar	Apr	May	Jun	Jul	Aug	Sep	Oct	Nov	Dec	Jan	Feb	Mar	Apr	May	Jun	Jul	Aug	Sep	Oct	Nov	Dec	Jan	Feb	Mar

April 2008



- Initiate Haul Road Construction
- Northwest Retention Basin Construction
- Install Stormwater Manholes and Piping

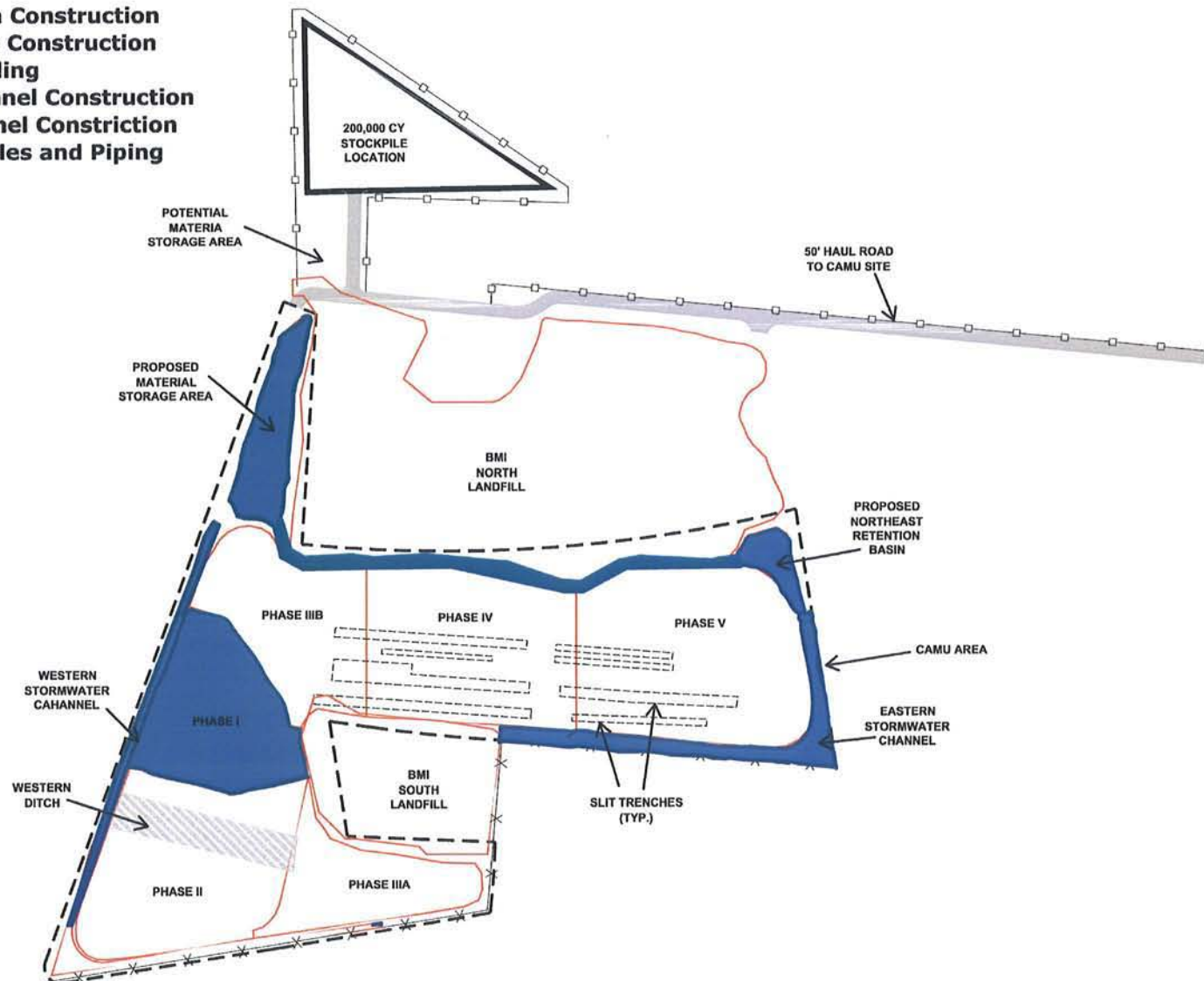


2008										2009												2010		
Mar	Apr	May	Jun	Jul	Aug	Sep	Oct	Nov	Dec	Jan	Feb	Mar	Apr	May	Jun	Jul	Aug	Sep	Oct	Nov	Dec	Jan	Feb	Mar

May 2008



- Complete Northwest Basin Construction
- Northeast Retention Basin Construction
- Phase I Excavation & Grading
- Western Stormwater Channel Construction
- Eastern Stormwater Channel Construction
- Install Stormwater Manholes and Piping

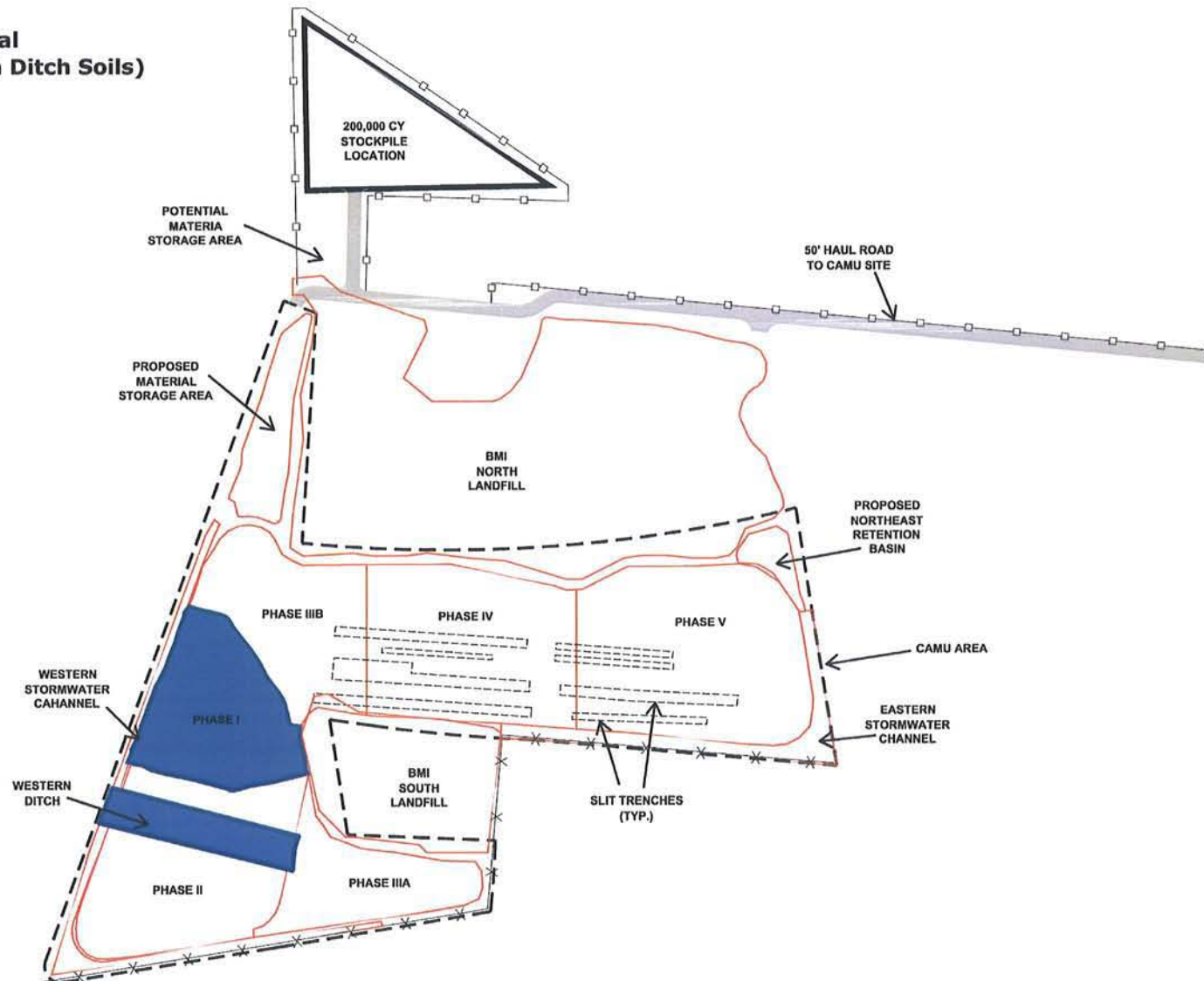


2008										2009												2010		
Mar	Apr	May	Jun	Jul	Aug	Sep	Oct	Nov	Dec	Jan	Feb	Mar	Apr	May	Jun	Jul	Aug	Sep	Oct	Nov	Dec	Jan	Feb	Mar

June 2008



- Phase I Liner Installation
- Initiate Phase I Operational Layer Placement (Western Ditch Soils)

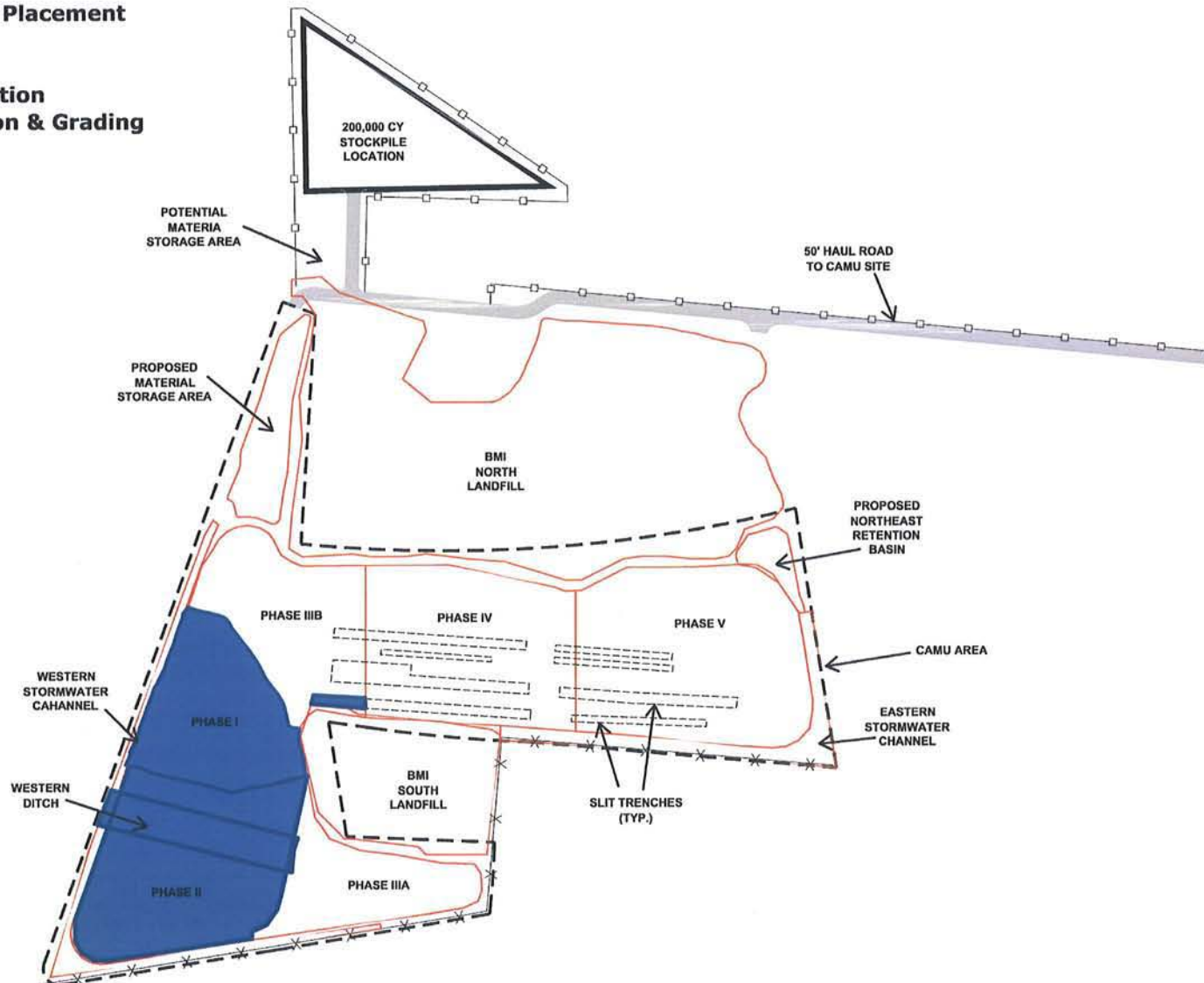


2008										2009												2010		
Mar	Apr	May	Jun	Jul	Aug	Sep	Oct	Nov	Dec	Jan	Feb	Mar	Apr	May	Jun	Jul	Aug	Sep	Oct	Nov	Dec	Jan	Feb	Mar

July 2008



- Phase I Operational Layer Placement Complete
- Phase I Waste Placement
- Initiate Slit Trench Excavation
- Initiate Phase II Excavation & Grading



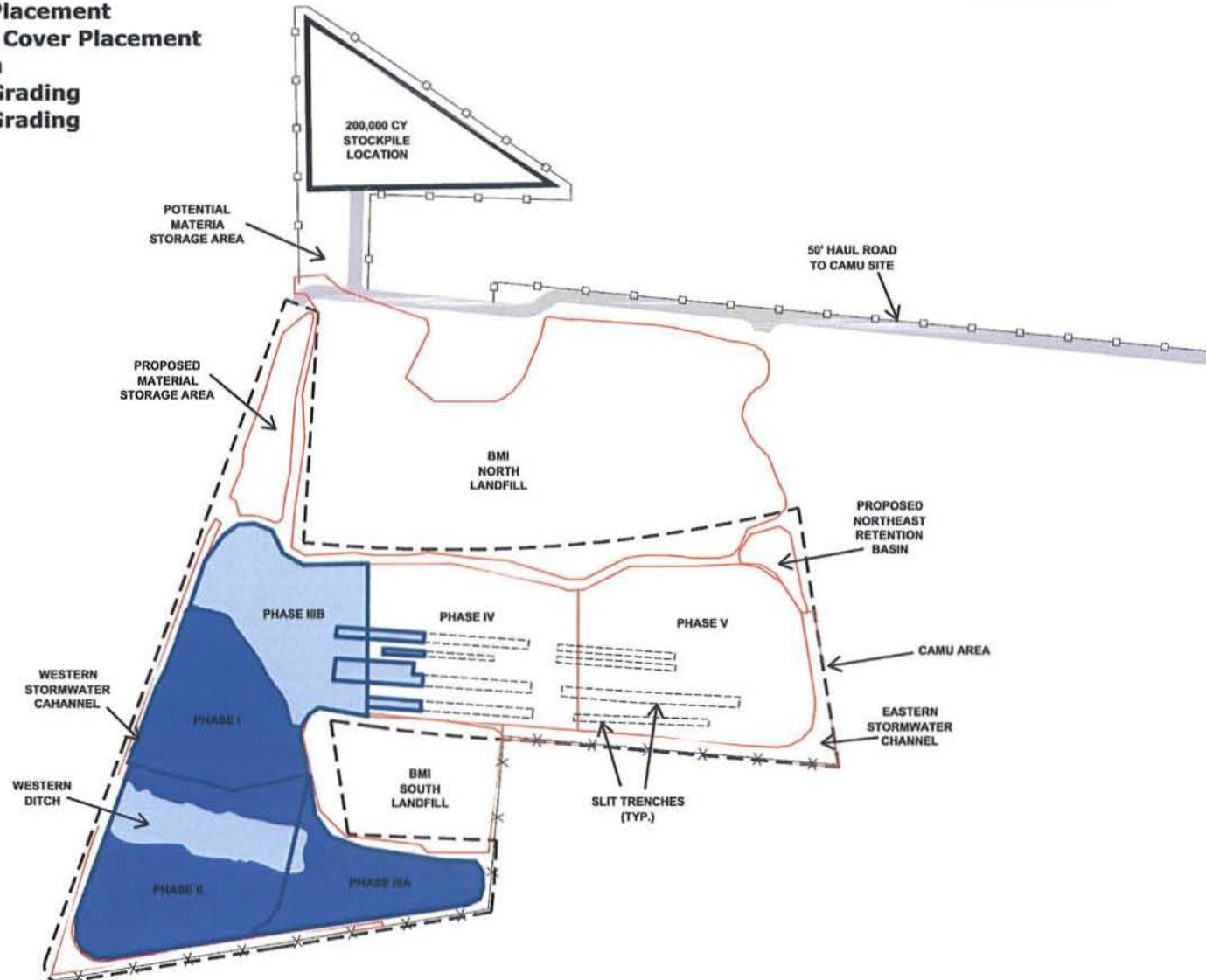
2008										2009												2010		
Mar	Apr	May	Jun	Jul	Aug	Sep	Oct	Nov	Dec	Jan	Feb	Mar	Apr	May	Jun	Jul	Aug	Sep	Oct	Nov	Dec	Jan	Feb	Mar

August 2008

Eastside



- Complete Phase I Waste Placement
- Complete Phase I Interim Cover Placement
- Phase II Liner Installation
- Phase IIIA Excavation & Grading
- Phase IIIB Excavation & Grading
- Slit Trench Excavation



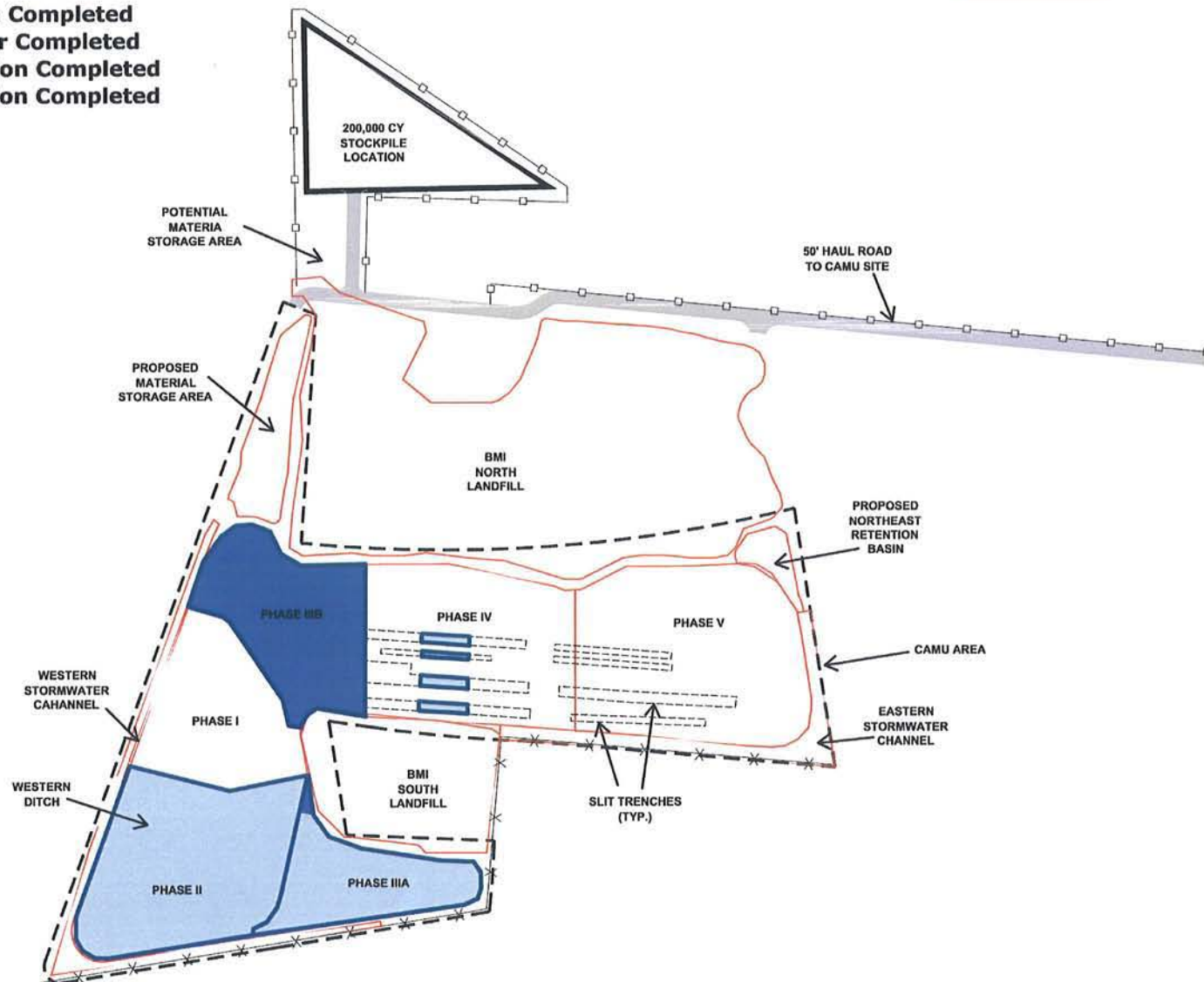
2008										2009												2010		
Mar	Apr	May	Jun	Jul	Aug	Sep	Oct	Nov	Dec	Jan	Feb	Mar	Apr	May	Jun	Jul	Aug	Sep	Oct	Nov	Dec	Jan	Feb	Mar

September 2008

Eastside



- Phase II Liner Installation Completed
- Phase II Operational Layer Completed
- Phase IIIA Liner Installation Completed
- Phase IIIB Liner Installation Completed
- Slit Trench Excavation



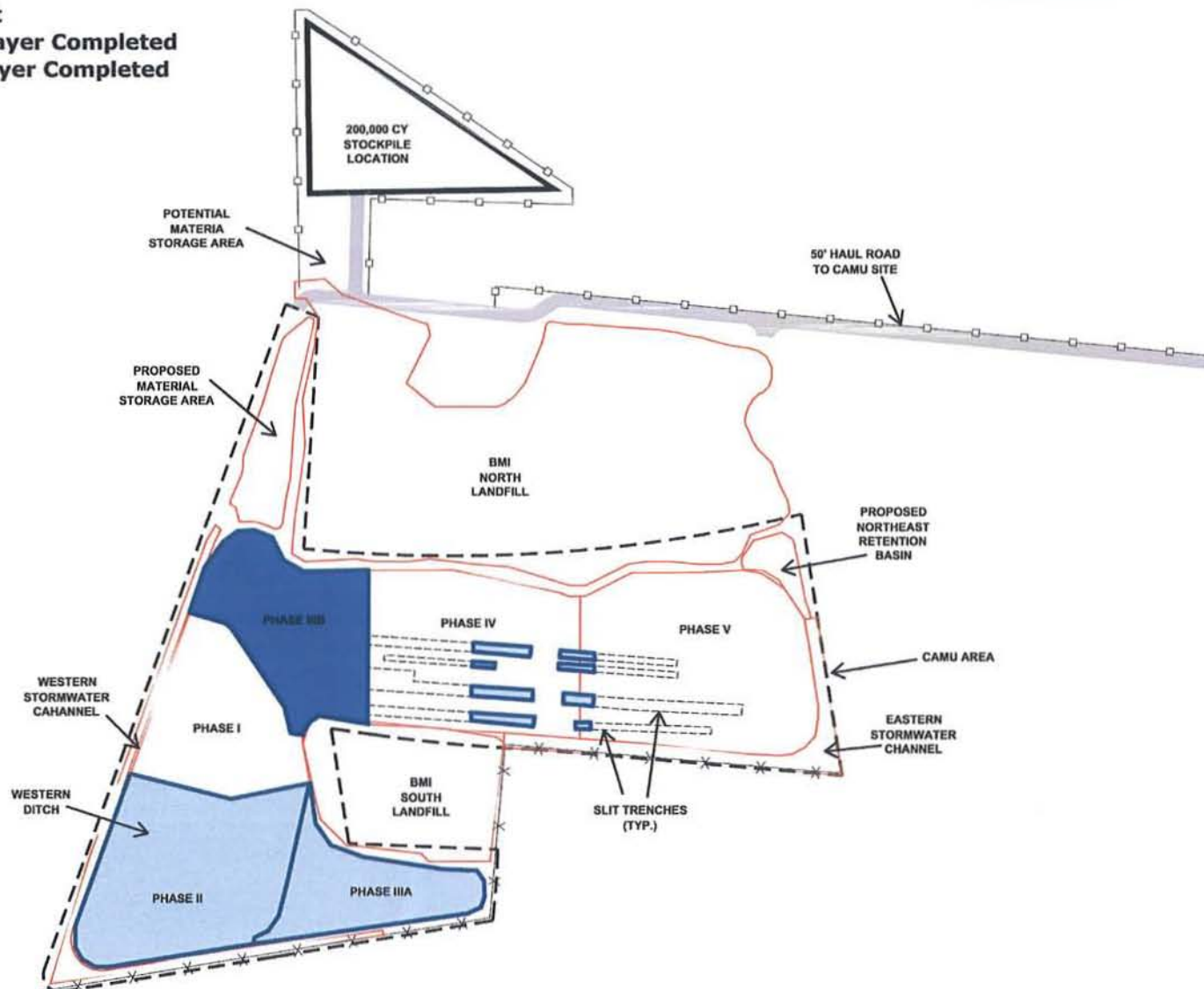
2008										2009												2010		
Mar	Apr	May	Jun	Jul	Aug	Sep	Oct	Nov	Dec	Jan	Feb	Mar	Apr	May	Jun	Jul	Aug	Sep	Oct	Nov	Dec	Jan	Feb	Mar

October 2008

Eastside



- Phase II Waste Placement
- PHASE IIIA Operational Layer Completed
- Phase IIIB Operational Layer Completed
- Slit Trench Excavation



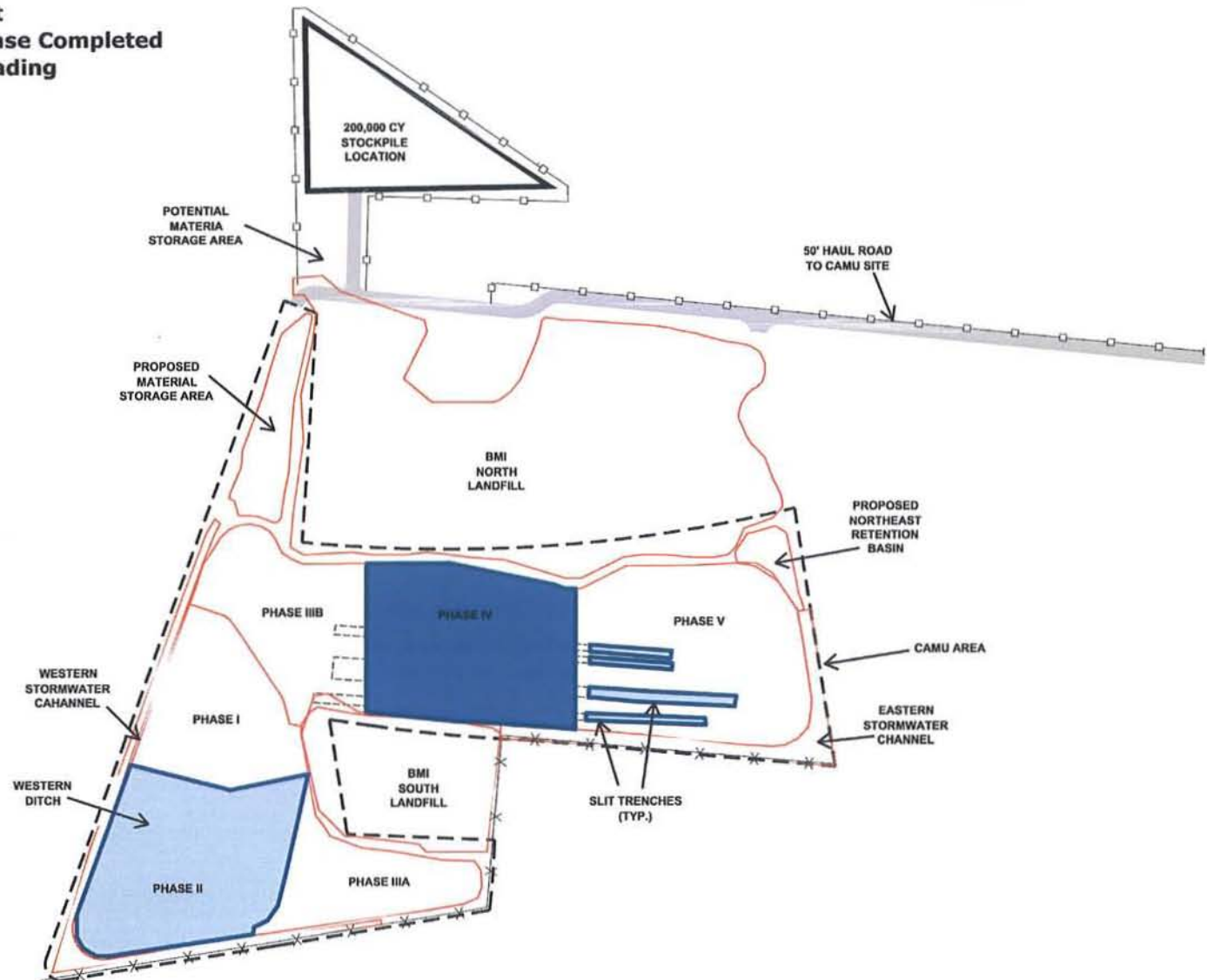
2008										2009												2010		
Mar	Apr	May	Jun	Jul	Aug	Sep	Oct	Nov	Dec	Jan	Feb	Mar	Apr	May	Jun	Jul	Aug	Sep	Oct	Nov	Dec	Jan	Feb	Mar

November 2008

Eastside



- Phase II Waste Placement
- Slit Trench Excavation Phase Completed
- Phase IV Excavation & Grading



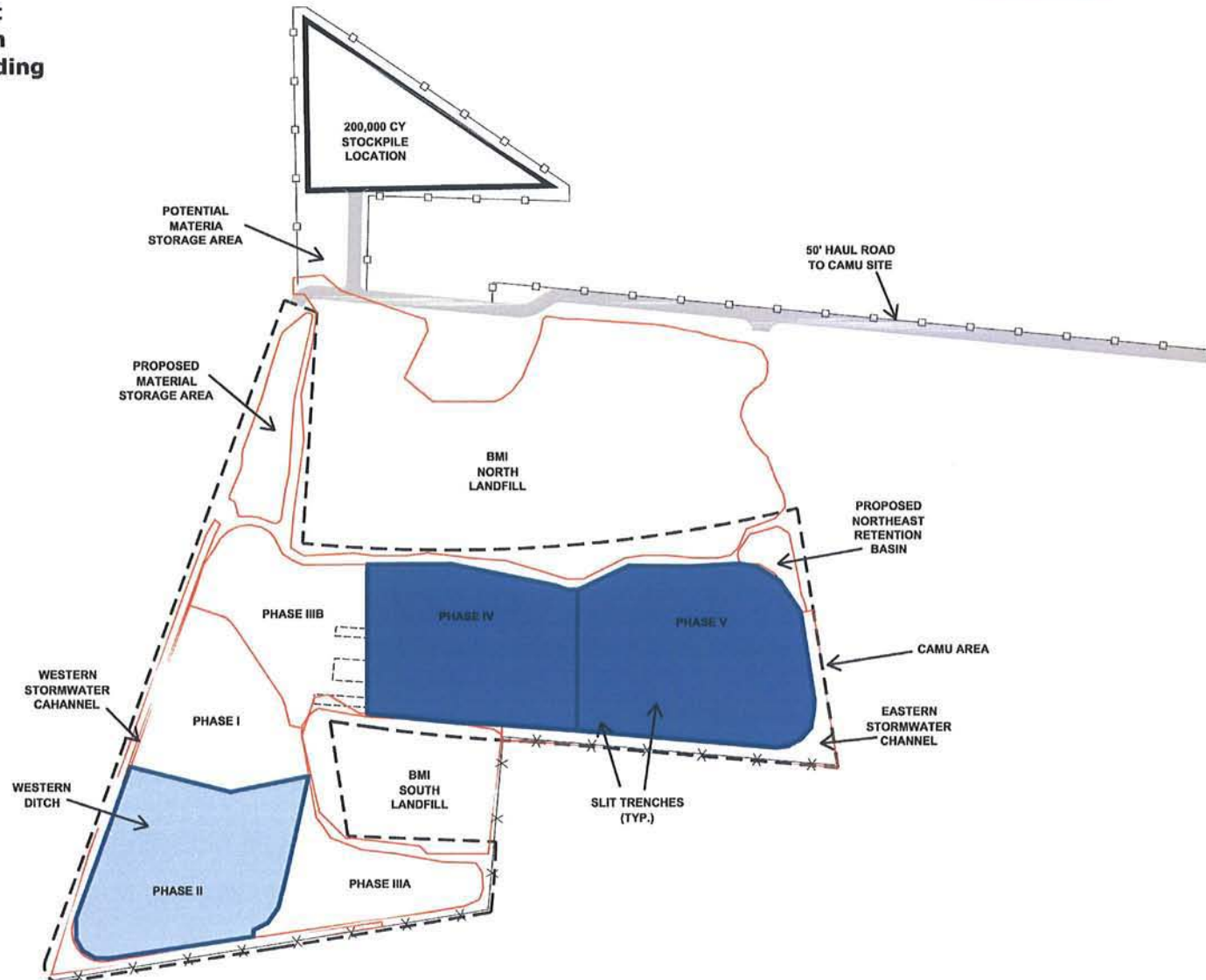
2008										2009												2010		
Mar	Apr	May	Jun	Jul	Aug	Sep	Oct	Nov	Dec	Jan	Feb	Mar	Apr	May	Jun	Jul	Aug	Sep	Oct	Nov	Dec	Jan	Feb	Mar

December 2008

Eastside



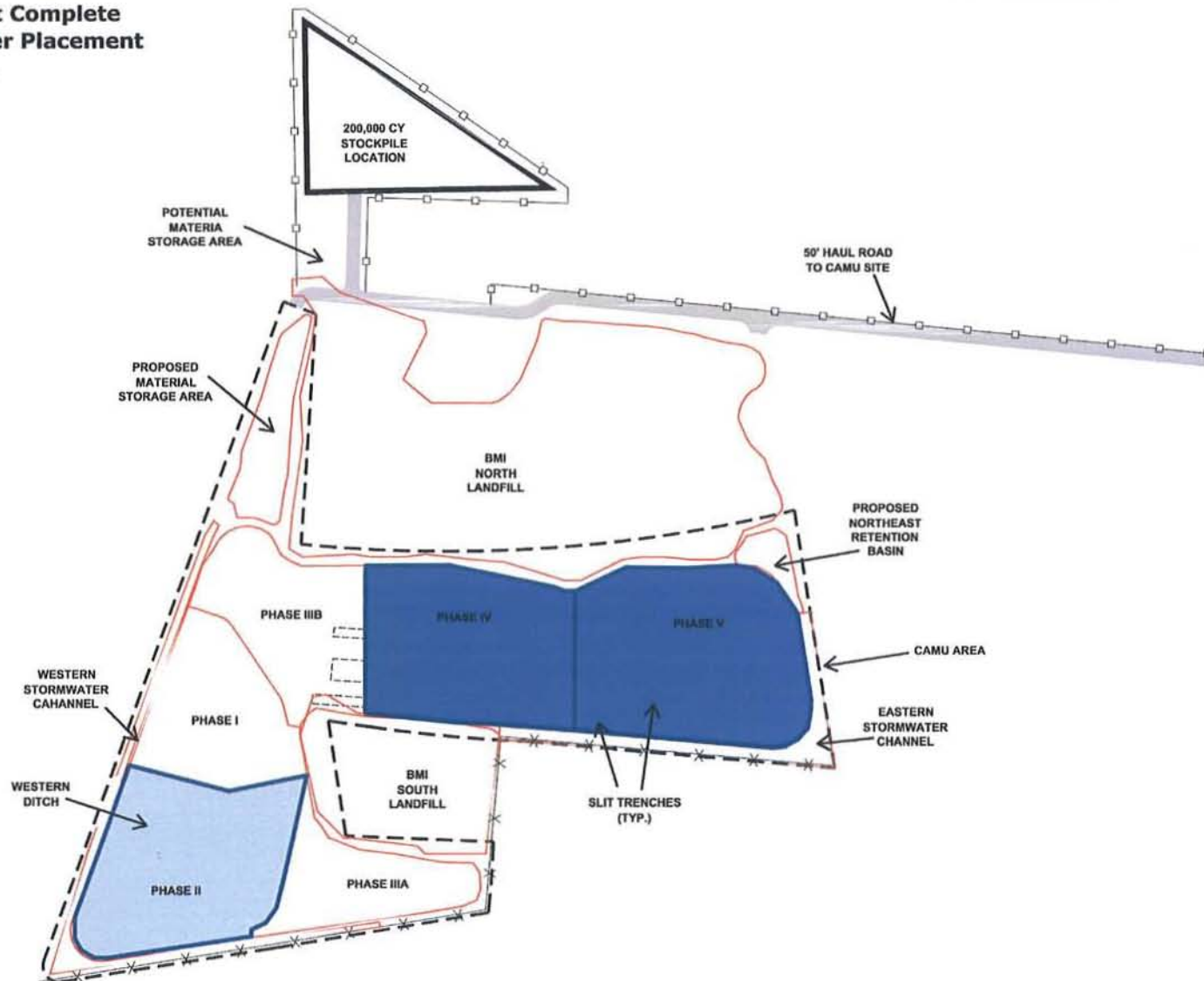
- Phase II Waste Placement
- Phase IV Liner Installation
- Phase V Excavation & Grading



2008										2009												2010		
Mar	Apr	May	Jun	Jul	Aug	Sep	Oct	Nov	Dec	Jan	Feb	Mar	Apr	May	Jun	Jul	Aug	Sep	Oct	Nov	Dec	Jan	Feb	Mar

January 2009

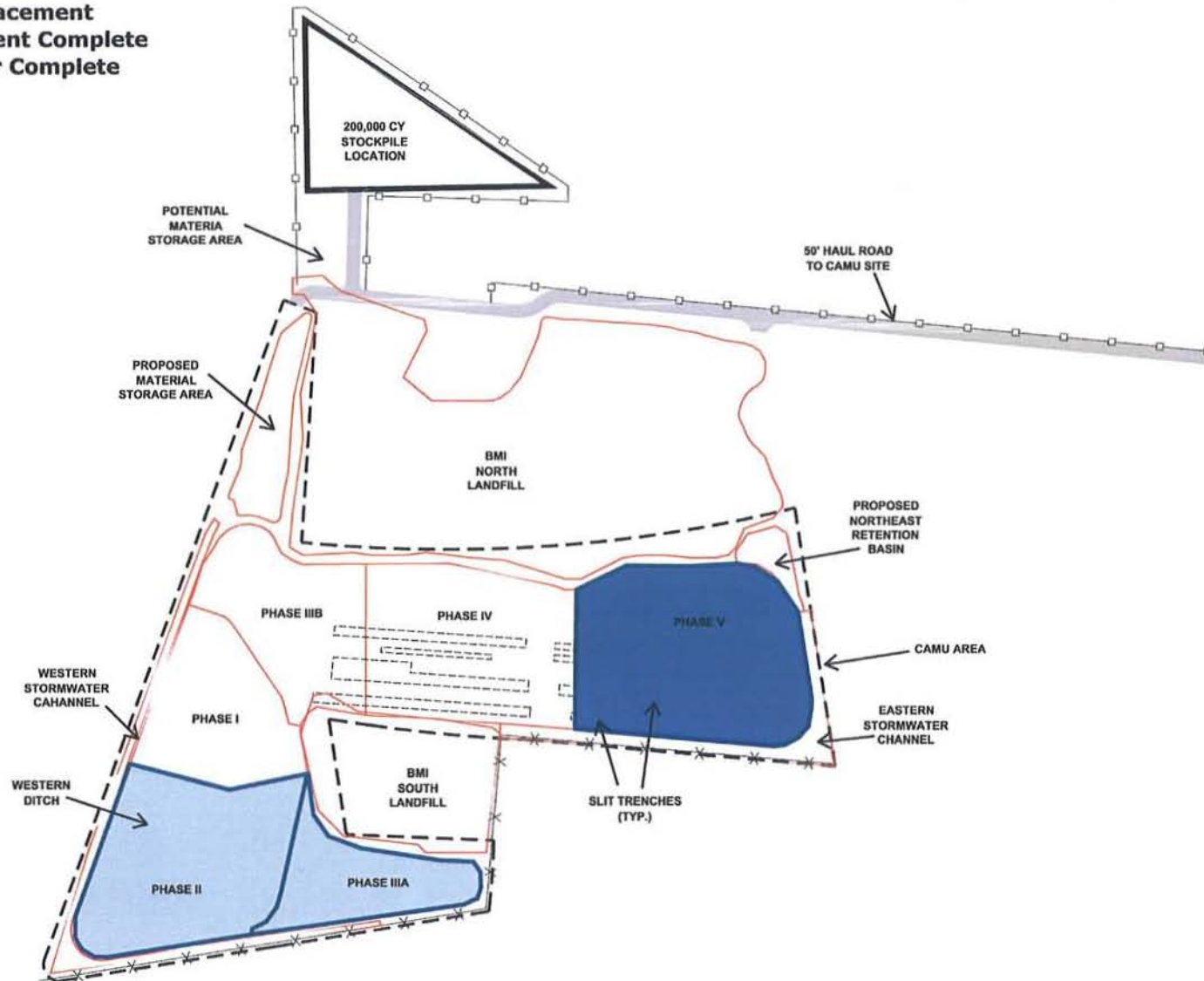
- Phase II Waste Placement Complete
- Phase IV Operational Layer Placement
- Phase V Liner Installation



2008										2009												2010		
Mar	Apr	May	Jun	Jul	Aug	Sep	Oct	Nov	Dec	Jan	Feb	Mar	Apr	May	Jun	Jul	Aug	Sep	Oct	Nov	Dec	Jan	Feb	Mar

February 2009

- Phase II Interim Cover Placement
- Phase IIIA Waste Placement Complete
- Phase V Operational Layer Complete



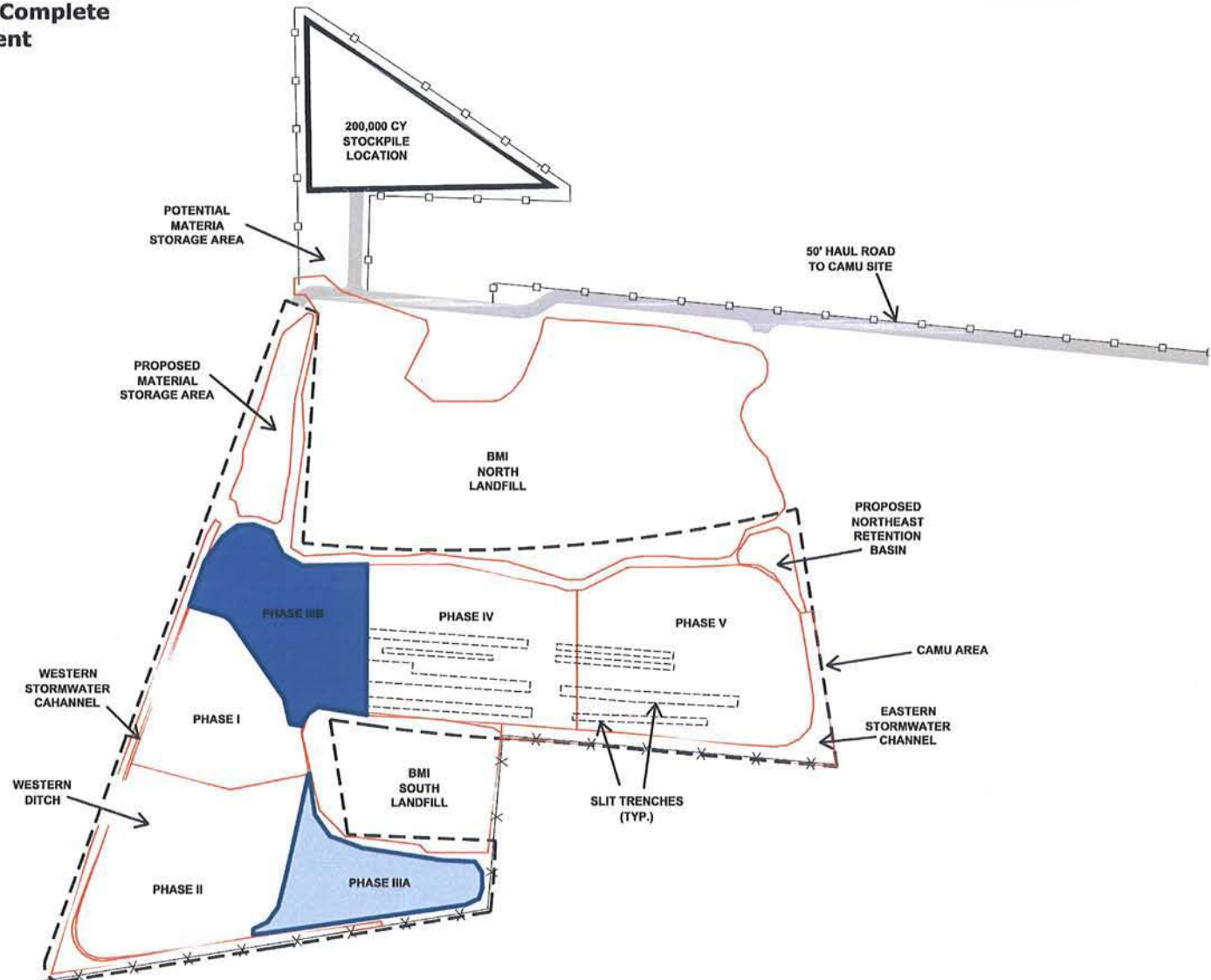
2008										2009												2010		
Mar	Apr	May	Jun	Jul	Aug	Sep	Oct	Nov	Dec	Jan	Feb	Mar	Apr	May	Jun	Jul	Aug	Sep	Oct	Nov	Dec	Jan	Feb	Mar

March 2009

Eastside



- Phase IIIA Interim Cover Complete
- Phase IIIB Waste Placement



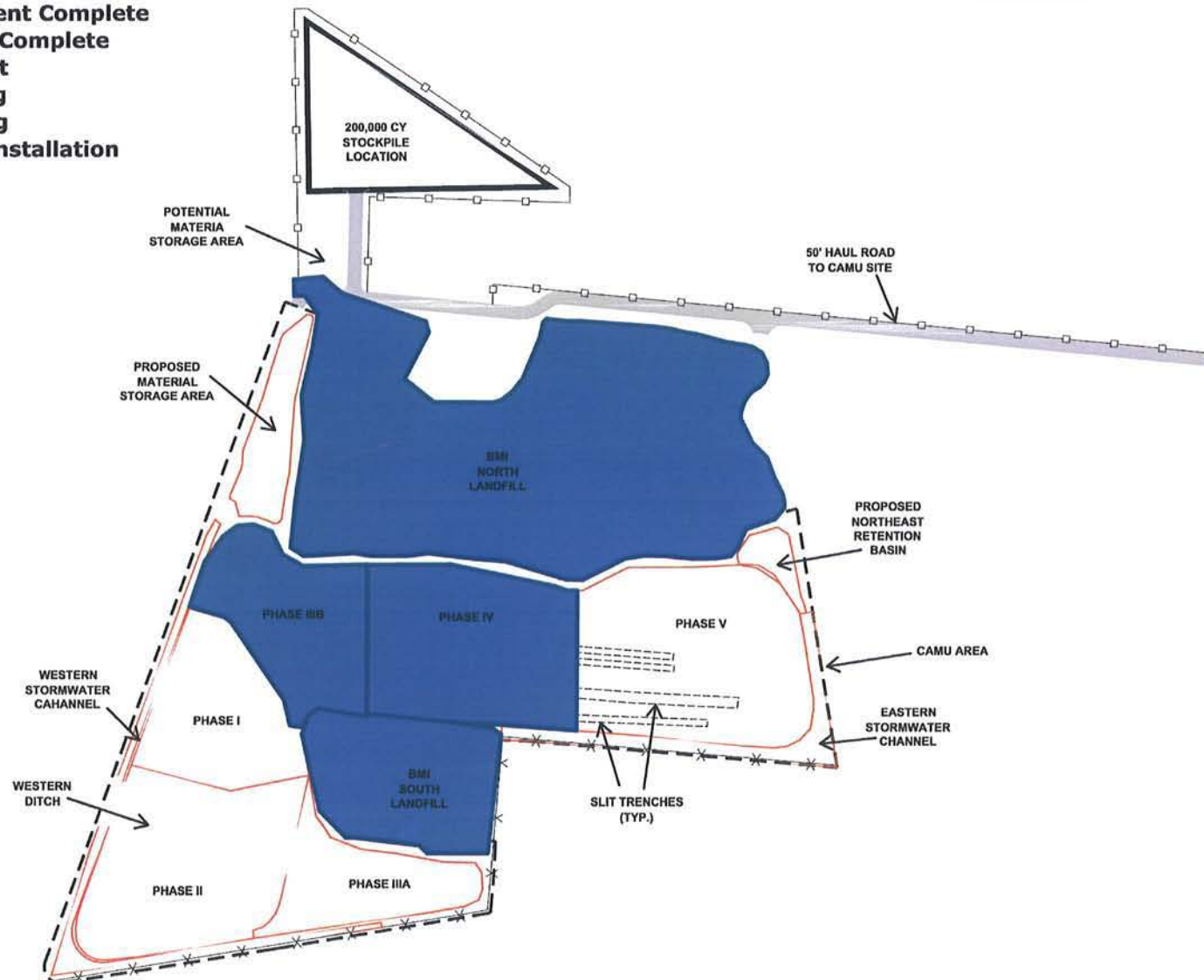
2008										2009												2010		
Mar	Apr	May	Jun	Jul	Aug	Sep	Oct	Nov	Dec	Jan	Feb	Mar	Apr	May	Jun	Jul	Aug	Sep	Oct	Nov	Dec	Jan	Feb	Mar

April 2009

Eastside



- Phase IIIB Waste Placement Complete
- Phase IIIB Interim Cover Complete
- Phase IV Waste Placement
- BMI North Landfill Grading
- BMI South Landfill Grading
- BMI South Landfill Liner Installation



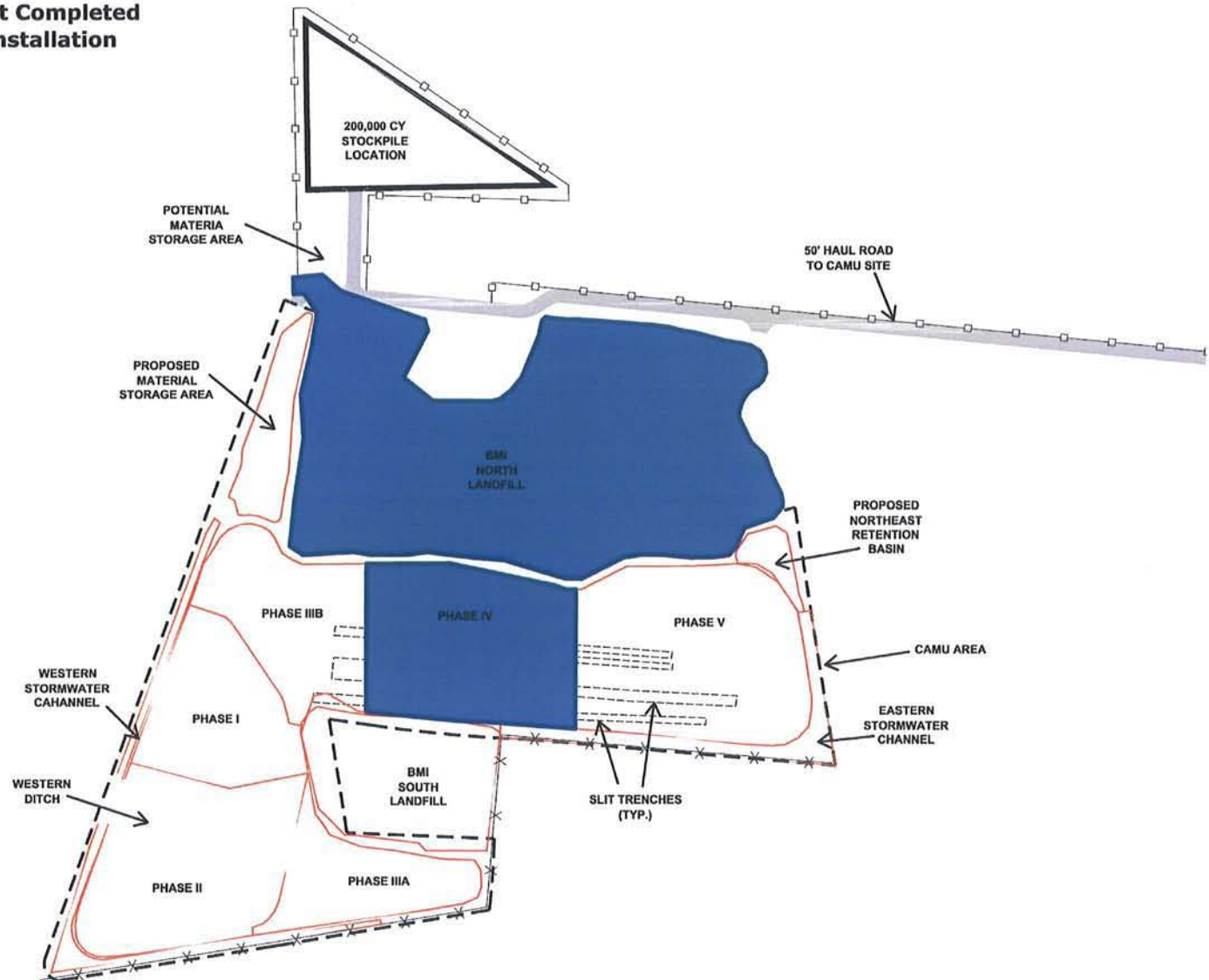
2008											2009												2010		
Mar	Apr	May	Jun	Jul	Aug	Sep	Oct	Nov	Dec		Jan	Feb	Mar	Apr	May	Jun	Jul	Aug	Sep	Oct	Nov	Dec	Jan	Feb	Mar

May 2009

Eastside



- Phase IV Waste Placement Completed
- BMI North Landfill Liner Installation



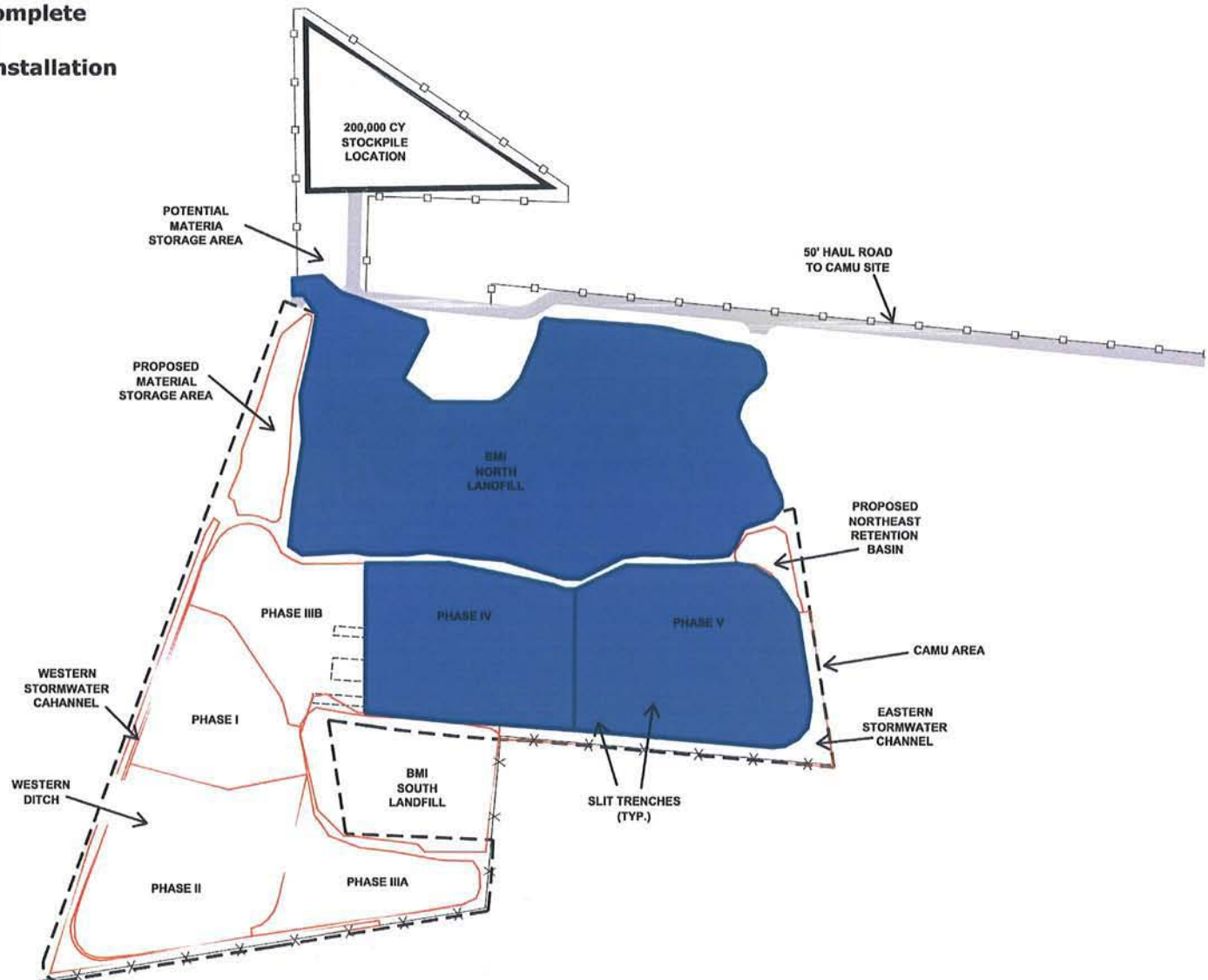
2008										2009												2010		
Mar	Apr	May	Jun	Jul	Aug	Sep	Oct	Nov	Dec	Jan	Feb	Mar	Apr	May	Jun	Jul	Aug	Sep	Oct	Nov	Dec	Jan	Feb	Mar

June 2009

Eastside



- Phase IV Interim Cover Complete
- Phase V Waste Placement
- BMI North Landfill Liner Installation



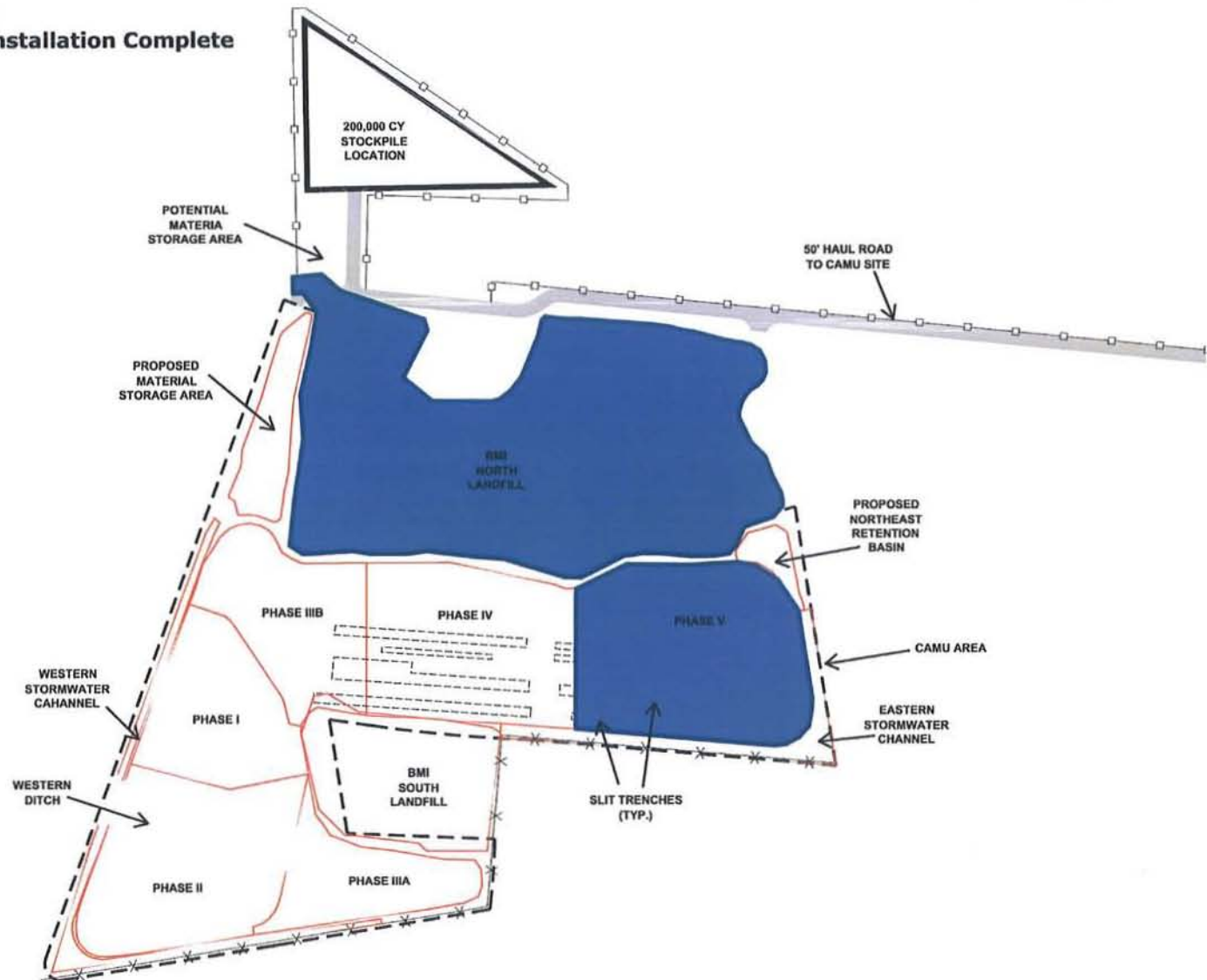
2008										2009												2010		
Mar	Apr	May	Jun	Jul	Aug	Sep	Oct	Nov	Dec	Jan	Feb	Mar	Apr	May	Jun	Jul	Aug	Sep	Oct	Nov	Dec	Jan	Feb	Mar

July 2009

Eastside



- Phase V Waste Placement
- BMI North Landfill Liner Installation Complete



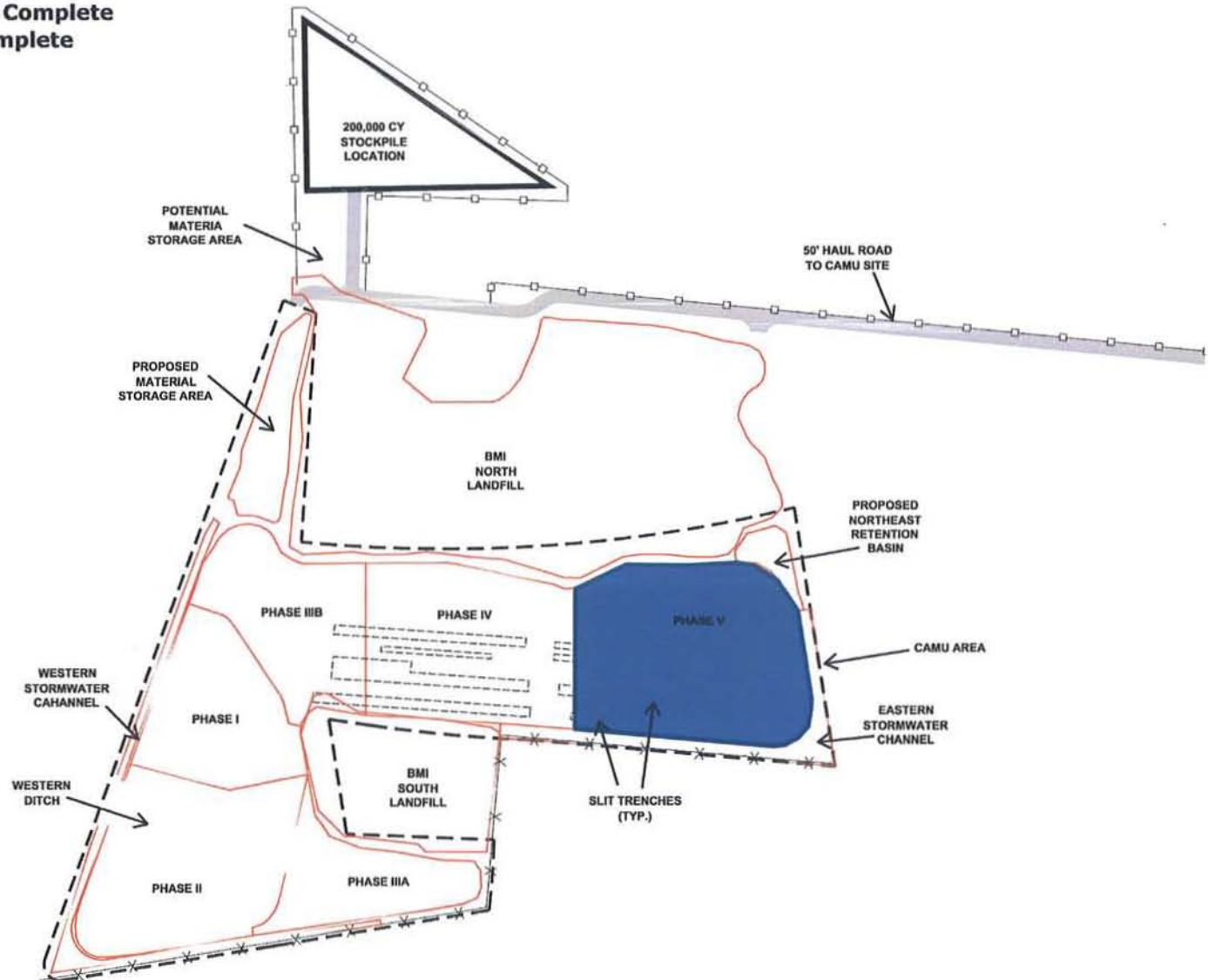
2008										2009												2010		
Mar	Apr	May	Jun	Jul	Aug	Sep	Oct	Nov	Dec	Jan	Feb	Mar	Apr	May	Jun	Jul	Aug	Sep	Oct	Nov	Dec	Jan	Feb	Mar

August 2009

Eastside



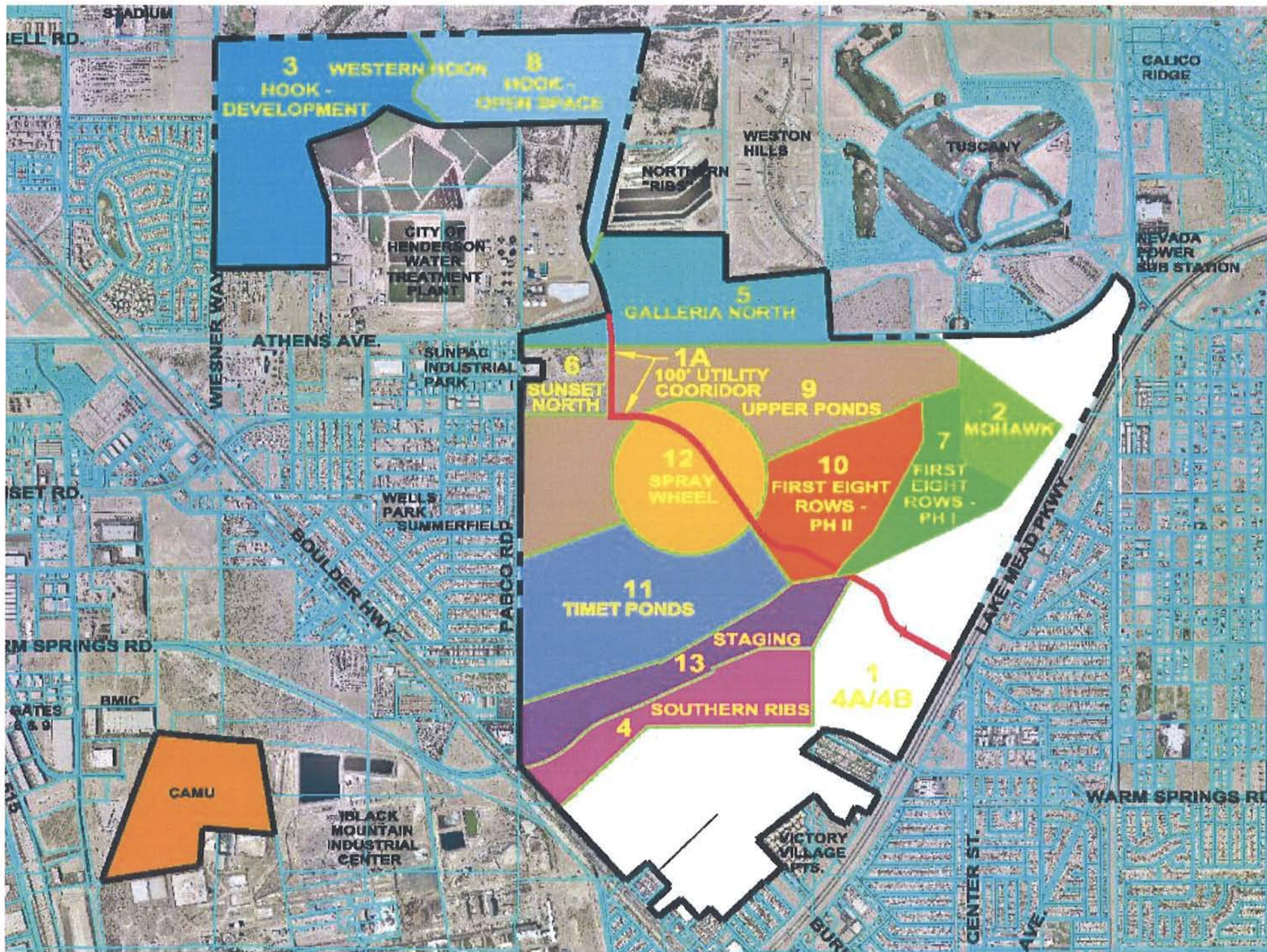
- Phase V Waste Placement Complete
- Phase V Interim Cover Complete



2008										2009												2010		
Mar	Apr	May	Jun	Jul	Aug	Sep	Oct	Nov	Dec	Jan	Feb	Mar	Apr	May	Jun	Jul	Aug	Sep	Oct	Nov	Dec	Jan	Feb	Mar

Other Work Update

- Sewer-line excavation project: in progress
- Confirmation sampling plans
 - Mohawk Plan approved; sampling completed
 - Others in preparation (Western Hook, etc.)
- Parcel 4A NFA obtained
- Background
 - Suppl. Shallow Soils - Report into NDEP
 - Deep Soils – Report in Preparation
- Parcel 4B final risk assessment in preparation
- 5th quarter Eastside groundwater sampling
 - almost complete
- Groundwater modeling – in progress
- CAMU area tracer testing plans abandoned
 - revised workplan submitted
- Factsheet mailed out



BMI COMPLEX PERIMETER AIR MONITORING PROGRAM – Phase I – Baseline Air Sampling Project





AIR SAMPLING PARAMETERS

- Air samples collected for following parameters:
 - Total Suspended Particulate (TSP)
 - Particulate matter less than 10 microns (PM10)
 - Total Metals using X-Ray Fluorescence
 - Radioactivity (gross alpha and gross beta)
 - Asbestos
 - Polycyclic aromatic hydrocarbons (PAHs)
 - Polychlorinated biphenyls (PCBs)
 - Pesticides
 - Polyhalogenated dibenzo-p-dioxins and dibenzofurans (PHDDs/PHDFs)
 - Polychlorinated dibenzo-p-dioxins and dibenzofurans (PCDDs/PCDFs)
 - Polybrominated dibenzo-p-dioxins and dibenzofurans (PBDDs/PBDFs)
 - Bromo/chloro dibenzo-p-dioxins and dibenzofurans (BCDDs/BCDFs)

AIR SAMPLING PARAMETERS (cont.)

- Collect air samples for parameters listed above at three perimeter air stations every 3 days (according to EPA particulate matter sampling schedule) for 10 sample events
- Samples collected from April 9, 2008 through May 10, 2008

Planned Activities - 1

- Remediation // Related Activities – Continue
- Closure // Related Activities
 - Finalize Background Reports
 - Parcel 4B – Obtain NFA
 - Sewer Line NFA
 - Confirmation Sampling and Analysis Plans
 - Eastside groundwater modeling
 - Initiate Eastside groundwater RAS
 - CAMU groundwater modeling

Planned Activities - 2

- Public Involvement Activities
 - Website at www.landwellco.com now updated
 - All important project documents available on the website
 - Construction updates added
 - Informational Kiosk – still open