

Project No./Contract No.	Project Title / Location	Day of Report	Report No.
6389	BRC Eastside Common Areas Soils Remediation	03-Aug-09	384

Position	Name	E-Mail Address	Phone No.
BRC PROJECT MANAGER	Lee Farris	<a href="mailto:lfarris@landwellco.com">lfarris@landwellco.com</a>	702-567-0400
BRC PROJECT MANAGER	Ranjit Sahu	<a href="mailto:sahuron@earthlink.net">sahuron@earthlink.net</a>	702-567-0400
CONST. PROJECT MANAGER	Dan Brennecke	<a href="mailto:Dan.Brennecke@westonsolutions.com">Dan.Brennecke@westonsolutions.com</a>	970-260-8586
Construction Manager	Richard Laubinger	<a href="mailto:Richard.Laubinger@westonsolution.com">Richard.Laubinger@westonsolution.com</a>	720-641-5866

Conditions				Temp (F)		Wind		Add'l Readings	
AM	Sunny / Party Cloudy	PM	Sunny / Party Cloudy	Low	84			Precip. (in/Dy.)	0
				High	110	SW	14 mph	Humidity (%)	0

[illegible]

Name	Position	Trade / Work Performed	YN
Greg Corcoran	Design Engineer	Oversight	N
Dan Street	QA Manager	Oversight	N
Jim Cox	QA/QC Supervisor	Oversight	Y
Rebecca Flynn	Engineer	Oversight	N
Stuart Irvin	QA/QC Tech	Oversight	Y
Roland Derosier	QA/QC Tech	Oversight	N
Camron Liddell	QA/QC Tech	Oversight	Y
Victor Hernandez	QA/QC Tech	Oversight	Y
Keith Stradette	QA/QC Tech	Oversight	Y

Name	Position	Trade / Work Performed	Y/N
Doug Herlocker, Tetra Tech	Air Monitoring Specialist	Air Monitoring	N
Becky Dano, Tetra Tech	Air Monitoring Specialist	Air Monitoring	Y
Jill Dale, Tetra Tech	Air Monitoring Specialist	Air Monitoring	N

Name	Position	Trade / Work Performed	Y/N
Bob Meyer, ASW	Inspector	Linear Inspector.	Y
Devin Gordon, MGA	Oversight	For NDEP	Y
Dook Kim, ATC	Field Observation	For AIG	
Brian Ralvica	Inspector	NDEP	
Steve Morrow, ASW	Inspector	Linear Inspector	N
PBS&J, Survey	Surveyors	Survey	N

[illegible][illegible]

Material	Vendor	Today	UOM	Purpose	Delivery Verification			
					to date	Qty	Spec	Tags
GCL	CETCO	0	rolls	For CAMU, On site		2271		
Geocomposite	Agru	0	rolls	For CAMU, On site		2448		
Geomembrane	Agru	0	rolls	For CAMU, On site		552		

Description of Work Executed Today	
1	1.0000
2	2.0000
3	3.0000
4	4.0000
5	5.0000
6	6.0000
7	7.0000
8	8.0000
9	9.0000
10	10.0000
11	11.0000
12	12.0000
13	13.0000
14	14.0000
15	15.0000
16	16.0000
17	17.0000
18	18.0000
19	19.0000
20	20.0000
21	21.0000
22	22.0000
23	23.0000
24	24.0000
25	25.0000
26	26.0000
27	27.0000
28	28.0000
29	29.0000
30	30.0000
31	31.0000
32	32.0000
33	33.0000
34	34.0000
35	35.0000
36	36.0000
37	37.0000
38	38.0000
39	39.0000
40	40.0000
41	41.0000
42	42.0000
43	43.0000
44	44.0000
45	45.0000
46	46.0000
47	47.0000
48	48.0000
49	49.0000
50	50.0000
51	51.0000
52	52.0000
53	53.0000
54	54.0000
55	55.0000
56	56.0000
57	57.0000
58	58.0000
59	59.0000
60	60.0000
61	61.0000
62	62.0000
63	63.0000
64	64.0000
65	65.0000
66	66.0000
67	67.0000
68	68.0000
69	69.0000
70	70.0000
71	71.0000
72	72.0000
73	73.0000
74	74.0000
75	75.0000
76	76.0000
77	77.0000
78	78.0000
79	79.0000
80	80.0000
81	81.0000
82	82.0000
83	83.0000
84	84.0000
85	85.0000
86	86.0000
87	87.0000
88	88.0000
89	89.0000
90	90.0000
91	91.0000
92	92.0000
93	93.0000
94	94.0000
95	95.0000
96	96.0000
97	97.0000
98	98.0000
99	99.0000
100	100.0000

1000

DAILY PRODUCTION & QUALITY CONTROL REPORT

Project No./Contract No.	Project Title / Location	Day of Report	Report No.
6389	BRC Eastside Common Areas Soils Remediation	03-Aug-09	384

<div><div>- Night Shift:</div><div>- Hauled material from Beta Ditch stockpile and HP-5/HP-3 stockpiles.</div></div> <div><div>CAMU Activity:</div><div>- Day Shift:</div><div>- Phase IIIA, grading waste.</div><div>- Phase II, grading waste on sideslopes.</div><div>- Phase IIIA, placing interim cover.</div><div>- Phase V, continue grading cell floor and slopes.</div><div>- Phase IIIB, grading slopes preparing for interim cover.</div></div> <div><div>- Night Shift:</div><div>- Placed material in Phase II and Phase IIIB.</div></div> <div><div>Embankment</div><div>- Phase I embankment, complete.</div><div>- Phase I estimated cumulative embankment placed:</div><div>- Phase II embankment, complete.</div></div> <div><div>Sump/Vadose Monitoring:</div><div>Phase I: LCRS Sump: Measurement taken: (2.4) Water Pumped : (N/A).</div><div>Vadose: Measurement taken: (0.6) Water Pumped: (N/A).</div><div>Phase II: LCRS Sump: Measurement taken: (2.1) Water Pumped: (447 gal).</div><div>Vadose: Measurement taken: (NA) Water pumped: (N/A).</div><div>Phase IIIB: LCRS Sump: Measurement taken: (NA) Water Pumped: (N/A)</div><div>Vadose: Measurement taken: (NA) Water Pumped: (N/A)</div></div> <div><div>Inspections:</div><div>CAMU: Weston monitored sump access.</div><div>Eastside: Inspected perimeter fence. All secure.</div></div>
---

Estimated Waste Placement (Estimated volumes do not account for shrinkage due to loss of moisture on wet ponds)

Phase I	Previous Daily Cumulative =	291,200	cy
	Operations layer placed (completed) for liner certification. = 21,662	0	cy
	Daily Day shift waste placed today: Phase IV,V scape & Phase IIIB trench excavation. 0 loads @ 20		
	cy/load (0 trucks) =	0	cy
	Daily Night shift placed today: 0 loads @ 18cy/load (0 trucks) =	0	cy
	To Date Phase I estimated cumulative waste placed =	291,200	cy
Phase II	Previous Daily Cumulative =	820,000	cy
	Operations layer placed (completed) for liner certification. = 37,188		cy
	Daily Day shift waste placed today: From Western Hook (0) loads @ 18 cy/load (0) trucks =		cy
	Daily Day shift waste placed today: Slit Trenches, (0) loads @ 18cy/load (0) trucks =		cy
	Daily Night shift placed today: (191) loads @ 18cy/load (10) trucks =	3,438	cy
	To Date Phase II estimated cumulative waste placed =	823,438	cy
Phase IIIA	Previous Daily Cumulative =	222,174	cy
	Operations layer placed directly in Phase IIIA today: (0) loads @ 18 cy/load (0) trucks =		cy
	Operations layer placed (completed for liner certification = 21,276)		cy
	Daily Day shift waste placed today: From Phase IIIB. (0) loads @ 18 cy/load (0) trucks =		cy
	Daily Night shift waste placed today: (0) loads @ 18cy/load (0) trucks =		cy
	To Date Phase IIIA estimated cumulative waste placed =	222,174	cy
Phase IIIB	Previous Daily Cumulative =	142,776	cy
	Operations layer placed (completed) for liner certification. = 21,978		cy
	Daily Day shift waste placed today: (0) loads @ 18 cy/load (0) trucks =		cy
	Daily Night shift waste placed today: (174) loads @ 18cy/load (12) trucks =	3,132	cy
	To Date Phase IIIB estimated cumulative waste placed =	145,908	cy
Phase IV	Previous Daily Cumulative =	37,314	cy
	Operations layer placed (completed) for liner certification = 37,314		cy
	Daily Day shift waste placed today: From ?? (0) loads @ 18 cy/load (0) trucks =		cy
	Daily Night shift waste placed today: (0) loads @ 18cy/load (0) trucks =		cy
	To Date Phase IV estimated cumulative waste placed =	37,314	cy
Phase V	Previous Daily Cumulative =		cy
	Operations layer placed (completed) for liner certification. = ?		cy
	Daily Day shift waste placed today: From ?? (0) loads @ 18 cy/load (0) trucks =		cy
	Daily Night shift waste placed today: (0) loads @ 18cy/load (0) trucks =		cy
	To Date Phase V estimated cumulative waste placed =	0	cy

		Estimated Waste at	
		Completion	% Complete
		(cy)	
Cumulative Total To Date All Phases =	1,520,034	2,050,000	74.1%

Geosynthetics Placed

Phase I (complete)	Previous	Placed	Cumulative Placed
GCL	307,372	0	307,372
Geomembrane	307,372	0	307,372
Geocomposite	307,372	0	307,372
Geotextile	69,340	0	69,340
Phase II (complete)			
GCL	498,468	0	498,468
Geomembrane	498,468	0	498,468
Geocomposite	520,592	0	520,592
Geotextile	0	0	0
Phase IIIA			
GCL	221,000	0	221,000
Geomembrane	221,000	0	221,000
Geocomposite	221,000	0	221,000
Geotextile	20,000	0	20,000
Phase IIIB			
GCL	340,535	0	340,535
Geomembrane	340,535	0	340,535
Geocomposite	340,535	0	340,535
Geotextile	50,000	0	50,000
Phase IV			
GCL	459,942	0	459,942
Geomembrane	459,942	0	459,942
Geocomposite	459,952	0	459,952
Geotextile	12,390	0	12,390
Phase V			
GCL	0	0	0
Geomembrane	0	0	0
Geocomposite	0	0	0
Geotextile	0	0	0



## Basic Remediation Company

875 West Warm Springs Road  
Henderson, Nevada 89011

### DAILY PRODUCTION & QUALITY CONTROL REPORT

Project No./Contract No.	Project Title / Location	Day of Report	Report No.
<b>6389</b> 0	<b>BRC Eastside Common Areas Soils Remediation</b> 0	03-Aug-09	<b>384</b>

### DAILY PHOTO LOG

Photo 1



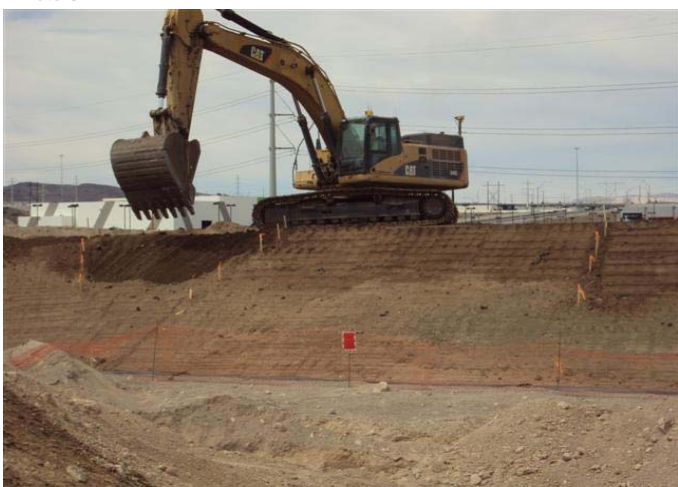
CAMU: Phase IIIA and Phase II.

Photo 2



CAMU: Phase V.

Photo 3



CAMU: Phase IIIB.

Photo 4



Western Hook.