

Project No./Contract No.	Project Title / Location	Day of Report	Report No.
6389	BRC Eastside Common Areas Soils Remediation	30-Sep-09	441

Position	Name	E-Mail Address	Phone No.
BRC PROJECT MANAGER	Lee Farris	lfarris@landwellco.com	702-567-0400
BRC PROJECT MANAGER	Ranjit Sahu	sahuron@earthlink.net	702-567-0400
CONST. PROJECT MANAGER	Dan Brennecke	Dan.Brennecke@westonsolutions.com	970-260-8586
Construction Manager	Richard Laubinger	Richard.Laubinger@westonsolution.com	720-641-5866

Conditions				Temp (°F)		Wind		Add'l Readings	
AM	Sunny/Clear	PM	Sunny/Clear	Low	55			Precip. (in/hr)	0
				High	79	NW	17 mph	Humidity (%)	0
Additional Weather Comments									

[illegible][illegible]

Name	Position	Trade / Work Performed	Y/N	
Doug Herlocker, Tetra Tech	Air Monitoring Specialist	Air Monitoring	N	
Becky Dano, Tetra Tech	Air Monitoring Specialist	Air Monitoring	Y	

Name	Position	Trade / Work Performed	Y/N
Bob Meyer, ASW	Inspector	Liner Inspector,	Y
Devin Gordon, MGA	Oversight	For NDEP	Y
Brian Rakivica	Inspector	NDEP	N
Steve Morrow, ASW	Inspector	Liner Inspector	N
PBS&J, Survey	Surveyors	Survey	N

[illegible]

Equipment	Vendor / Tag No.	Work Performed
CAT D40E Dump Truck (10)	CAMU	- - -
JD D400 Dump Trucks (10)	Eastside	- - -
CAT 324D long stick excavator	Eastside	- - -
CAT D8R Dozer with disc, (1)	Eastside	- - -
CAT 345 excavators, (8)	Eastside and CAMU, Western Hook	- - -
CAT 330 Excavator (1)	CAMU	- - -
CAT 365 Excavator (1)	CAMU	- - -
CAT 98 LSP Dozer (1)	Eastside	- - -
Water Trucks (3)	Eastside	- - -
Case backhoe	CAMU	-
CAT 16H Grader	CAMU	-
CAT D9 Dozer	Eastside	-
Water Trucks (4)	CAMU	-
CAT D-6 Dozer, (3)	CAMU	-
CAT 14H Grader	CAMU	-
Gradall, forklift	CAMU	-
J.G.	CAMU	-
Smooth drum Rollers, (3)	CAMU	-
Tenent Street Sweeper	Eastside and CAMU	-
Komatsu Loader	CAMU, Phase 1	-
Chelton 1400 Powerscreener	CAMU	-

Material	Vendor	Today	UOM	Purpose	Delivery Verification			
					to date	Qty	Spec	Tags
GCL	CETCO	0	rolls	For CAMU, On site		2271		
Geocomposite	Agru	0	rolls	For CAMU, On site		2448		
Geomembrane	Agru	0	rolls	For CAMU, On site		552		

Eastside Mixing and Paving Activity:

Day Shift:

- Continued excavating in PUB-9, PUE-6 and PUE-7, hauling material to Beta Ditch stockpile.
- Continued excavating road south of PUB-9, hauling material to Beta Ditch stockpile.
- Continued excavating along sewer realignment by PUB-9/PUE-8, mixing and stockpiling material.
- Diced and pushed up material from WST-3/4-S and SW-12, previously spread out to dry.
- Mixed and stockpiled material in PUD-8 and PUB-9.
- Continued excavating wet material out of WST-3 and WST-5 and spreading out to dry.
- Continued excavating material from local basins in SW-1 and SW-4.

DAILY PRODUCTION & QUALITY CONTROL REPORT			
Project No./Contract No.	Project Title / Location	Day of Report	Report No.
6389	BRC Eastside Common Areas Soils Remediation	30-Sep-09	441

- Continued excavating material from top of berms in SC-1 and SW-4. - Western Hook continued hauling stockpiled material to the CAMU with OTR trucks.			
- Night Shift: - Hauled material from Beta Ditch, SC-1 and SW-7 stockpiles.			
CAMU Activity:			
- Day Shift - Continued placing material from Western Hook into Phase IV. - Continued placing interim cover on Phase II and Phase IIIA. - Continued finish grading in Phase IIIA. - Entact monitored leachate in Phase I and Phase II. - GES collected water samples from Phase II sump and monitoring well next to Phase I.			
- Night Shift: - Placed material in Phase IV.			
Embankment - Phase I embankment, complete. - Phase I estimated cumulative embankment placed: - Phase II embankment, complete.			
Sump/Vadose Monitoring:			
Phase I: LCRS Sump: Measurement taken: (1.4) Water Pumped: (N/A). Vadose: Measurement taken: (0.6) Water Pumped: (N/A).			
Phase II: LCRS Sump: Measurement taken: (2.2) Water Pumped: (N/A). Vadose: Measurement taken: (N/A) Water pumped: (N/A).			
Phase IIIB: LCRS Sump: Measurement taken: (N/A) Water Pumped: (N/A) Vadose: Measurement taken: (N/A) Water Pumped: (N/A).			
Inspections: CAMU: N/A. Fence/le: Fence line on eastside perimeter inspected. All secure.			

Estimated Waste Placement (Estimated volumes do not account for shrinkage due to loss of moisture on wet ponds)

Phase I		
Previous Daily Cumulative =	314,886	cy
Operations layer placed (completed) for liner certification. = 21,662	0	cy
Daily Day shift waste placed today: Phase IV,V scrape & Phase IIIB trench excavation. 0 loads @ 21		
cy/load (0 trucks) =	0	cy
Daily Night shift placed today: (0) loads @ 18cy/load (0) trucks =		
To Date Phase I estimated cumulative waste placed =	314,886	cy
Phase II		
Previous Daily Cumulative =	1,013,698	cy
Operations layer placed (completed) for liner certification. = 37,188		
Daily Day shift waste placed today: From Western Hook (0) loads @ 18 cy/load (0) trucks =		cy
Daily Day shift waste placed today: Eastside Waste, (0) loads @ 18cy/load (0) trucks =		cy
Daily Night shift placed today: (0) loads @ 18cy/load (0) trucks =		cy
To Date Phase II estimated cumulative waste placed =	1,013,698	cy
Phase IIIA		
Previous Daily Cumulative =	222,174	cy
Operations layer placed directly in Phase IIIA today: (0) loads @ 18 cy/load (0) trucks =		
Operations layer placed (completed for liner certification = 21,276)		cy
Daily Day shift waste placed today: From Phase IIIB. (0) loads @ 18 cy/load (0) trucks =		cy
Daily Night shift waste placed today: (0) loads @ 18cy/load (0) trucks =		cy
To Date Phase IIIA estimated cumulative waste placed =	222,174	cy
Phase IIIB		
Previous Daily Cumulative =	202,788	cy
Operations layer placed (completed) for liner certification. = 21,978		cy
Daily Day shift waste placed today: (0) loads @ 18 cy/load (0) trucks =		cy
Daily Night shift waste placed today: (0) loads @ 18cy/load (0) trucks =		cy
To Date Phase IIIB estimated cumulative waste placed =	202,788	cy
Phase IV		
Previous Daily Cumulative =	103,806	cy
Operations layer placed (completed) for liner certification = 37,314		cy
Daily Day shift waste placed today: Western Hook, (148) loads @ 18 cy/load (14) trucks =	2,664	cy
Daily Night shift waste placed today: (355) loads @ 18cy/load (18) trucks =	6,390	cy
To Date Phase IV estimated cumulative waste placed =	112,860	cy
Phase V		
Previous Daily Cumulative =	40,284	cy
Operations layer placed (completed) for liner certification = 40,284		cy
Daily Day shift waste placed today: From ?? (0) loads @ 18 cy/load (0) trucks =		cy
Daily Night shift waste placed today: (0) loads @ 18cy/load (0) trucks =		cy
To Date Phase V estimated cumulative waste placed =	40,284	cy

Cumulative Total To Date All Phases =		1,906,690	cy	Estimated Waste at Completion (cy)	2,400,000	% Complete	79.4%
---------------------------------------	--	-----------	----	------------------------------------	-----------	------------	-------

Geosynthetics Placed

	Previous	Placed	Cumulative Placed
Phase I (complete)			
GCL	307,372	0	307,372
Geomembrane	307,372	0	307,372
Geocomposite	307,372	0	307,372
Geotextile	69,340	0	69,340
Phase II (complete)			
GCL	498,468	0	498,468
Geomembrane	498,468	0	498,468
Geocomposite	520,592	0	520,592
Geotextile	0	0	0
Phase IIIA			
GCL	221,000	0	221,000
Geomembrane	221,000	0	221,000
Geocomposite	221,000	0	221,000
Geotextile	20,000	0	20,000
Phase IIIB			
GCL	340,535	0	340,535
Geomembrane	340,535	0	340,535
Geocomposite	340,535	0	340,535
Geotextile	50,000	0	50,000
Phase IV			
GCL	459,942	0	459,942
Geomembrane	459,942	0	459,942
Geocomposite	459,952	0	459,952
Geotextile	12,390	0	12,390
Phase V			
GCL	558,653	0	558,653
Geomembrane	558,653	0	558,653
Geocomposite	558,653	0	558,653
Geotextile	15,925	0	15,925

Basic Remediation Company

875 West Warm Springs Road
Henderson, Nevada 89011

DAILY PRODUCTION & QUALITY CONTROL REPORT

Project No./Contract No.	Project Title / Location	Day of Report	Report No.
6389 0	BRC Eastside Common Areas Soils Remediation 0	30-Sep-09	441

DAILY PHOTO LOG

Photo 1



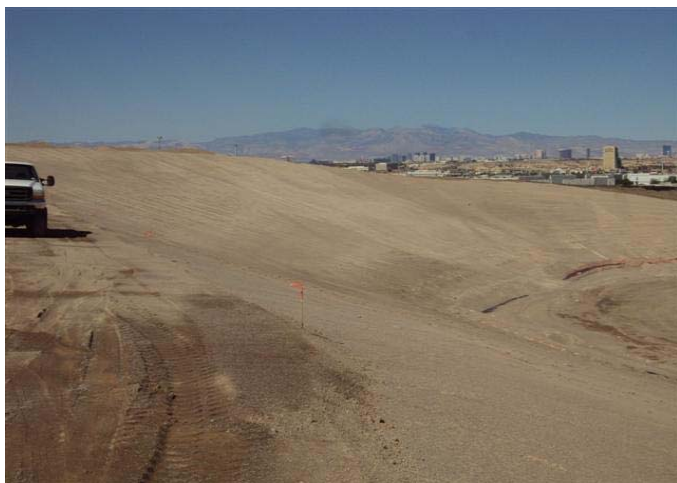
CAMU: Phase IV.

Photo 2



CAMU: Phase IIIA.

Photo 3



CAMU: Phase IIA and Phase II.

Photo 4



Phase IIIA.