

QUARTERLY PROGRESS REPORT

AS REQUIRED BY

**SETTLEMENT AGREEMENT AND
ADMINISTRATIVE ORDER ON CONSENT
(AOC3)**

SECTION XIII, PARAGRAPHS 1 and 2.

SUBMITTED BY

BASIC REMEDIATION COMPANY

DATED JANUARY 15, 2009

1. Introduction

This Quarterly Progress Report is being submitted to the Nevada Division of Environmental Protection (NDEP) pursuant to the requirements of Paragraphs 1 and 2 of Section XIII of the AOC3 executed between the Parties and NDEP on February 15, 2006. The format of this report is based on the requirements stated in Paragraph 1 of Section XIII. This report covers activities between October 1 and December 31, 2008.

2. Actions Taken Towards Achieving Compliance

In addition to the various documents submitted to the NDEP discussed below, BRC and NDEP held numerous meetings and telephone calls in order to achieve progress on project activities. In-person or telephone meetings were held between the BRC Project Manager and the NDEP Project Manager (occasionally along with representatives from the City of Henderson as well as consultants representing the prospective property buyer) roughly every two weeks. Minutes of these meetings are maintained separately. Additional issue-specific meetings were also held either in person or via telephone between BRC and NDEP Project Managers. Minutes of these meetings are also maintained separately.

Remediation activities continued during this quarter. Hauling of Eastside wastes to the CAMU commenced during this period. Daily progress reports are being submitted to the NDEP to document progress on these activities. Briefly: (i) BRC and its contractors continued to dry and prepare Eastside soils, from the TIMET ponds, for their placement into the CAMU; (ii) hauling of these wastes in addition to wastes from the dry Eastside ponds commenced and continued into CAMU Phases I and II; (iii) the haul road including Boulder Highway crossing was completed to allow waste transport; (iv) the Phase I CAMU was prepared, wastes deposited, and is almost at interim closure height; (v) the Phase II CAMU was lined, operations layer placed, and initial waste placement was initiated; (vi) Phase IIIA CAMU was rough graded; (vii) Phase IIIB CAMU surface clearing and grubbing was completed – in addition waste materials discovered are in the process of being placed in the CAMU; (viii) waste materials discovered during preparation of the north-east detention basin were placed in the CAMU Phase I; and (ix) air monitoring continued. NDEP has been maintaining oversight of this effort directly and via its consultants.

Separately, BRC: (a) completed validating Deep Soils Background data and submitted a report on this – NDEP comments were received and are being addressed; (b) completed implementing the fifth quarterly groundwater monitoring workplan for the Eastside – submitted the report and has received comments from the NDEP; (c) submitted a shallow soils background report and has received approval from the NDEP on the dataset – a final report will be submitted; (d) obtained approval from the NDEP for a baseline round of four quarterly groundwater monitoring events at the CAMU area; (e) submitted the final risk assessment for the sewer line alignment; (f) completed initial data analysis for the Mohawk area confirmation sampling, discussed results with NDEP, and completed a round of re-scraping and resampling for this sub-area; (g) prepared,

submitted, and obtained approval for the Southern RIBs, Western Hook, Galleria, and Sunset subarea confirmation sampling workplans; and (h) obtained approval for asbestos sampling for the remaining subareas not part of the active remediation area.

Data validation reports were submitted as various sampling program analyses were completed.

BRC is in the midst of the groundwater modeling effort for the Eastside. The calibration portion of the modeling was completed and approved by the NDEP. A response to comments letter is in preparation as requested by the NDEP per comments received. BRC is currently initiating predictive modeling.

Several "All Companies" conference calls were held in order to discuss the issue of vapor intrusion. A joint (BMI Companies) report on this subject was submitted to the NDEP. Comments were received and a revised report will be resubmitted. BRC concluded its efforts on the dynamic field measurement technique for radon and decided that the current static chamber approach will be implemented in the field.

3. Sampling Conducted

BRC collected various samples in support of the remediation effort including air samples for potential acid gases at the southern edge of CAMU Phase II. In addition to routine air monitoring (Phase IIA and Phase III-Haul Road) the following additional sampling efforts were completed:

BRC collected initial and re-scrape samples from the sewer line alignment and Mohawk subareas.

BRC collected initial samples from the Southern RIBS and Western Hook subareas.

BRC collected asbestos samples from the rest of the sub-areas not part of the remediation effort.

BRC collected re-scrape samples from Parcel 4B.

4. Work Plans and Other Deliverables Submitted Including Modifications

Attachment A shows a list of all documents that were submitted to NDEP in this period. Attachment B shows a list of all NDEP documents received during this period.

5. Actions Scheduled for Next Quarter

Activities planned include: continuing remediation activities for the Eastside affecting both the Eastside, the Haul Roads, and the CAMU areas, including the Slit Trench area; obtaining approval of the final supplemental shallow background and deep background soils reports; obtaining NFAs for the sewer line alignment, Parcel 4B; and the Mohawk and Southern RIBs sub-areas; completion of data collection (including re-scrape data collection, as needed) for the Southern RIBs, Western Hook, Sunset and Galleria sub-areas; completion of asbestos data collection for the rest of the sub-areas not part of the remediation effort; continuation of Phase IIA and Phase III air monitoring; completion of groundwater modeling for the Eastside; completed of the first quarterly groundwater monitoring for the CAMU area; and possible submittal of additional confirmation sampling and analysis plans for additional Eastside sub-areas.

The following Work Plans and Other Deliverables are planned to be submitted to the NDEP in the next period:

(i) Revised Project Schedule (updated as needed). The current construction schedule is attached to this report. A regular overall project schedule is also attached.

(ii) Various Data Validation Summary Reports, as needed.

(iii) Revised Shallow Soils Background Report.

(iv) Revised Deep Soils Background Report.

(v) Revised Fifth Quarterly Groundwater Monitoring Report, including schedule for updated CSM and RAS development.

Additional documents may also be submitted depending on project progress.

6. Completions, Delays and Mitigations

The remediation effort is generally on schedule. However, there have been delays due to factors such as weather (including high winds, rain, and unusually heavy snow fall). No additional waste materials were discovered. Significant effort are resources are being put into minimizing stormwater pollution issues such as track-out and into truck decontamination.

7. Planned Modifications to Remedial Actions

Not applicable at this time.

8. Community Relations Plan Actions Taken

The project website was operational as of late November 2006. Parts of the website will continue to be modified as needed. Almost all final project documents are posted on the website.

The project information kiosk area near Mohawk and Lake Mead was opened in late November 2006. No changes were made to the kiosk panels.

A Restoration Advisory Committee (RAC) meeting was held on October 9, 2008.

9. Community Relations Plan Actions for Next Quarter

A RAC meeting will be held on January 8, 2009 at the BRC offices.

The project website is expected to be updated periodically, including a reorganization of how the various documents are organized, to facilitate ease of retrieval.

Appendix A - Documents Submitted To NDEP			
TO	FROM	DATE	SUBJECT
Brian Rakvica	Ron Sahu	10/1/2008	1 hard copy & 1 e-copy of the Groundwater Monitoring Plan for the CAMU Area
Brian Rakvica	Ron Sahu	10/1/2008	1 e-copy - Technical Memorandum - Proposed Revisions to the Analyte List for Eastside Sub-Area Sampling and Analysis Clark County, Nevada
Brian Rakvica	Geosyntec on behalf of Ron Sahu	10/1/2008	electronic file - DCN-011
Brian Rakvica	Geosyntec on behalf of Ron Sahu	10/6/2008	Response to Phase I CQA Report Comments #2
Brian Rakvica	Geosyntec on behalf of Ron Sahu	10/10/2008	02770-006A Phase 2 Geomembrane Panel Layout Drawing
Brian Rakvica	Geosyntec on behalf of Ron Sahu	10/10/2008	02770-006B Interim North BMI Landfill Geomembrane Panel Layout Drawing
Brian Rakvica	Geosyntec on behalf of Ron Sahu	10/10/2008	02770-004B BMI North Geomembrane Roll Production Data
Brian Rakvica	Geosyntec on behalf of Ron Sahu	10/10/2008	02770-001B BMI North Geomembrane Manufacturer's Resin Data
Brian Rakvica	Geosyntec on behalf of Ron Sahu	10/10/2008	02773-004C Missing Geocomposite MQC Certificates-phase 2 (Roll #s 269730298 and 269730299)
Brian Rakvica	Geosyntec on behalf of Ron Sahu	10/10/2008	02773-004D Additional BMI North Geocomposite MQC Certificates
Brian Rakvica	Geosyntec on behalf of Ron Sahu	10/14/2008	Waste Processing and Placement Plan
Brian Rakvica	Geosyntec on behalf of Ron Sahu	10/17/2008	02205-002 Waste Excavation Plan
Brian Rakvica	Geosyntec on behalf of Ron Sahu	10/24/2008	02773-004E Revised Geocomposite MQC Certificates-Phase 2
Brian Rakvica	Geosyntec on behalf of Ron Sahu	10/24/2008	02770-001C Additional BMI North Geomembrane Manufacturer's Resin Data
Brian Rakvica	Geosyntec on behalf of Ron Sahu	10/24/2008	02770-004C Additional BMI North Geomembrane Roll Production Data
Brian Rakvica	DBS&A on behalf of Ron Sahu	10/28/2008	Groundwater Monitoring Plan, CAMU Area
Brian Rakvica	Geosyntec on behalf of Ron Sahu	10/30/2008	All conformed drawings (electronic file)
Brian Rakvica	Geosyntec on behalf of Ron Sahu	10/31/2008	02770-006C Revised Phase 2 Geomembrane Panel Layout Drawing
Brian Rakvica	DBS&A on behalf of Ron Sahu	11/4/2008	Groundwater Flow Model Calibration, BMI Upper and Lower Ponds Area
Brian Rakvica	Geosyntec on behalf of Ron Sahu	11/7/2008	02772-001C Subgrade Acceptance Certificates-Phase 2 (Panels 1-19)
Brian Rakvica	Geosyntec on behalf of Ron Sahu	11/7/2008	02772-004E BMI North GCL MQC Certificates
Brian Rakvica	Geosyntec on behalf of Ron Sahu	11/13/2008	DCN-012, DCN-013

Brian Rakvica	Geosyntec on behalf of Ron Sahu	11/14/2008	02770-006D Revised Phase 2 Geomembrane Panel Layout Drawing
Brian Rakvica	Geosyntec on behalf of Ron Sahu	11/14/2008	02772-001D Subgrade Acceptance Certificates-Phase 2 (Panels 20-84)
Brian Rakvica	Geosyntec on behalf of Ron Sahu	11/14/2008	DCN-014
Brian Rakvica	ERM on behalf of Ron Sahu	11/20/2008	1 hard copy & 1 e-copy - Technical Memorandum - Verification Study: Comparison of the Static Flux Chamber Technique Using Activated Charcoal Canisters to the USEPA Dynamic Flux Chamber and the PTG-7Rn Radon Detection Analyzer Conducted at the BMI Common Areas (Eastside), Revision 2
Brian Rakvica	ERM on behalf of Ron Sahu	11/20/2008	1 hard copy & 1 e-copy - BRC Standard Operating Procedure (SOP) 42, Subsurface Soil Sampling by Geoprobe Methods, BMI Common Areas, Clark County, Nevada, Revision 1
Brian Rakvica	ERM on behalf of Ron Sahu	11/20/2008	1 hard copy & 1 e-copy - BRC Standard Operating Procedure (SOP) 16, Flux Chamber Source Testing, BMI Common Areas, Clark County, Nevada, Revision 6
Brian Rakvica	Geosyntec on behalf of Ron Sahu	11/21/2008	02200-002H Phase 2 Liner Grading As-Built-B
Brian Rakvica	Geosyntec on behalf of Ron Sahu	11/21/2008	02200-002I Phase 2 Liner Grading As-Built-C
Brian Rakvica	Geosyntec on behalf of Ron Sahu	11/21/2008	02200-002J Phase 2 Liner Grading As-Built-D
Brian Rakvica	Geosyntec on behalf of Ron Sahu	11/21/2008	02200-002K Phase 2 Liner Grading As-Built-E
Brian Rakvica	Geosyntec on behalf of Ron Sahu	11/21/2008	02772-001E Subgrade Acceptance Certificates-Phase 2 (Panels 85-107)
Brian Rakvica	Geosyntec on behalf of Ron Sahu	11/21/2008	02772-001F Subgrade Acceptance Certificates-Phase 2 (Panels 108-132)
Brian Rakvica	Geosyntec on behalf of Ron Sahu	11/21/2008	03400-001 Headwall Concrete Mix Design/Trashrack Certification Letter
Brian Rakvica	Geosyntec on behalf of Ron Sahu	11/26/2008	02200-002L Phase 2 Liner Grading As-Built-F
Brian Rakvica	Geosyntec on behalf of Ron Sahu	11/26/2008	02770-006E Revised Phase 2 Geomembrane Panel Layout
Brian Rakvica	Geosyntec on behalf of Ron Sahu	11/26/2008	02772-001G Subgrade Acceptance Certificates-Phase 2 (Panels 133-164)
Brian Rakvica	Geosyntec on behalf of Ron Sahu	12/5/2008	01050-007 Survey data on excavation and backfill production during previous month
Brian Rakvica	Geosyntec on behalf of Ron Sahu	12/5/2008	02770-004D Future CAMU Phases Resin/Roll Production data
Brian Rakvica	Geosyntec on behalf of Ron Sahu	12/5/2008	02770-006F Revised Interim North BMI Landfill Geomembrane Panel Layout Drawing

Brian Rakvica	Geosyntec on behalf of Ron Sahu	12/10/2008	DCN-015
Brian Rakvica	Geosyntec on behalf of Ron Sahu	12/12/2008	02772-001H Subgrade Acceptance Certificates-BMI North Closure (Panels 1-27)
Brian Rakvica	Geosyntec on behalf of Ron Sahu	12/12/2008	02772-004F GCL MQC Certificates (Remaining BMI North, Phase 3A, and a portion of Phase 3B)
Brian Rakvica	Geosyntec on behalf of Ron Sahu	12/15/2008	Phase II CQA Report
Brian Rakvica	Geosyntec on behalf of Ron Sahu	12/16/2008	Phase II CQA Report (electronic files)
Brian Rakvica	DBS&A on behalf of Ron Sahu	12/16/2008	Groundwater Monitoring Plan, CAMU Area
Brian Rakvica	Geosyntec on behalf of Ron Sahu	12/19/2008	02772-004G GCL MQC Certificates-Index Flux Results for Submittal 02772-004F
Brian Rakvica	Geosyntec on behalf of Ron Sahu	12/19/2008	02770-004E Additional CAMU Closure Geomembrane Resin/Roll Production Data
Brian Rakvica	Geosyntec on behalf of Ron Sahu	12/19/2008	02773-004F Remaining 240-2-8 Geocomposite MQC Certificates for Phase 3A, 3B, 4 and 5
Brian Rakvica	Geosyntec on behalf of Ron Sahu	12/19/2008	02773-004G Remaining 270-2-6 Geocomposite MQC Certificates for BMI-North, CAMU, and BMI South Closures
Brian Rakvica	DBS&A on behalf of Ron Sahu	12/19/2008	Vertical Gradient submittal response to NDEP Comments
Brian Rakvica	MWH on behalf of Ron Sahu	12/23/2008	Fifth Groundwater Monitoring Report, April-July 2008 for BMI Common Areas (Eastside)
Brian Rakvica	Geosyntec on behalf of Ron Sahu	12/30/2008	02772-001I Subgrade Acceptance Certificates-BMI North Closure (Panels 28-46)

Appendix B - Documents Received From NDEP			
TO	FROM	DATE	SUBJECT
Mark Paris	Brian Rakvica	10/3/2008	NDEP's Response to: Technical Memorandum - Proposed Revisions to the Analyte List for Eastside Sub-Area
Mark Paris	Brian Rakvica	10/4/2008	NDEP's Response to: Phase I Construction Quality Assurance Report Basic Remediation Company Corrective Action Management Unit, Responses to Comments dated September 2008
Mark Paris	Brian Rakvica	10/6/2008	NDEP's Response to: 2007 CAMU Groundwater Monitoring Report (October-November 2007); dated September 2008 (received September 18, 2008)
Mark Paris	Brian Rakvica	10/8/2008	NDEP's Response to: BRC CAMU Phase I Construction Quality Assurance Report - Response to Comments dated 28 Sept. 2008
Mark Paris	Lisa Fleming	10/9/2008	Payment Request #44 (7/1/08-9/30/08)
Ranjit Sahu	Janine O. Hartley	10/10/2008	Temporary Discharge Permit #TNEV2009356, TNEV2009357 and TNEV2009358, Basic Remediation Company Wash-down Area 2, Wash-down Area 1, and Pond SW-12
Mark Paris	Brian Rakvica	10/10/2008	NDEP's Response to: Waste Processing and Placement Plan dated September 27, 2008
Mark Paris	Brian Rakvica	10/13/2008	NDEP's Response to: Groundwater Monitoring Plan Corrective Action Management Unit (CAMU) Area (GMP) dated September 30, 2008
Mark Paris	Brian Rakvica	10/14/2008	NDEP's Response to: Data Validation Summary Report Sewer Alignment Excavation Soil Investigation April and August 2008 (Dataset 50); dated October 2008 (received October 2, 2008)
Mark Paris	Brian Rakvica	10/14/2008	NDEP's Response to: Technical Memorandum-Proposed Revisions to the Analyte List for Eastside Sub-Area Sampling and Analysis dated October 9, 2008
Mark Paris	Brian Rakvica	10/17/2008	NDEP's Response to: DVSR Sewer Alignment Excavation Soil Investigation April and August 2008 (Dataset 50); dated October 15, 2008
Mark Paris	Brian Rakvica	10/23/2008	NDEP's Response to: DVSR - Mohawk Sub-Area (Dataset 52); dated October 2008 (received October 15, 2008)

Mark Paris	Brian Rakvica	10/30/2008	NDEP's Response to: Technical Memorandum - Data Review for 2008 CAMU Phase IIIA Investigation dated October 29, 2008
Mark Paris	Brian Rakvica	10/30/2008	NDEP's Response to: Revised DRAFT - BMI Complex Air Quality Monitoring Project - Phase III - Summary of Sampling Approach and Chemicals of Concern at Eastside and CAMU Areas; dated October 30, 2008
Mark Paris	Brian Rakvica	11/1/2008	NDEP's Response to: Data Validation Summary Report Fifth Groundwater Monitoring Event April-July 2008 (Dataset 51); dated October 2008 (received October 23, 2008)
Mark Paris	Brian Rakvica	11/3/2008	NDEP's Response to: Standard Operating Procedures, SOP-16, Flux Chamber Source Testing dated July 21, 2008
Mark Paris	Brian Rakvica	11/3/2008	NDEP's Response to: Technical Memorandum - Verification Study: Comparison of the Static Flux Chamber Technique using Activated Charcoal Canisters to the USEPA Dynamic Flux Chamber and the PTG-7Rn Radon Detection Analyzer Conducted at the BMI Common Areas (Eastside), Revision 1 dated October 2, 2008
Mark Paris	Brian Rakvica	11/4/2008	NDEP's Response to: Response to Comments (RTC) for NDEP Letter dated August 4, 2008, regarding BRC Response to NDEP Request for Vertical Delineation of Contaminant Plumes and Hydraulic Gradients dated September 10, 2008
Mark Paris	Brian Rakvica	11/5/2008	NDEP's Response to: BMI Complex CAMU Emergency Air Sampling Summary dated October 17, 2008
Mark Paris	Brian Rakvica	11/5/2008	NDEP's Response to: Perimeter Air Monitoring Plan; dated October 2008 (received October 30, 2008)
Mark Paris	Brian Rakvica	11/10/2008	BMI Plant Sites and Common Areas Projects, Henderson, Nevada NDEP's Response to: Potential Vapor Intrusion Pathway Evaluation Integrated Summary Report (potential vapor intrusion issue)
Mark Paris	Brian Rakvica	11/10/2008	NDEP's Response to: Standard Operating Procedures, SOP-42, Subsurface Soil Sampling by Geoprobe Methods dated October 30, 2008 (received November 3, 2008)

Mark Paris	Brian Rakvica	11/12/2008	NDEP's Response to: Sampling and Analysis Plan for the Galleria North Sub-Area dated October 2008 (received November 3, 2008)
Mark Paris	Brian Rakvica	11/13/2008	NDEP's Response to: 2008 Supplemental Shallow Soil Background Report dated October 2008 (received October 20, 2008)
Mark Paris	Brian Rakvica	11/13/2008	NDEP's Response to: Groundwater Monitoring Plan Corrective Action Management Unit (CAMU) Area dated October 28, 2008
Mark Paris	Brian Rakvica	11/14/2008	BMI Plant Sites and Common Areas Projects, Henderson, Nevada - Statistical Analysis Recommendations for Field Duplicates and Field Splits
Mark Paris	Brian Rakvica	11/24/2008	NDEP's Response to: Standard Operating Procedures, SOP-42, Subsurface Soil Sampling by Geoprobe Methods dated November 20, 2008
Mark Paris	Jim Najima	11/26/2008	BMI Plant Sites and Common Areas Projects, Access Agreement and Dispute Resolution
Mark Paris	Brian Rakvica	12/3/2008	BMI Plant Sites and Common Areas Projects, Detection Limits and Data Reporting
Mark Paris	Brian Rakvica	12/5/2008	NDEP's Response to: Removal Action Workplan for Soil, Mohawk Sub-Area dated December 4, 2008
Mark Paris	Brian Rakvica	12/9/2008	NDEP's Response to: Technical Memorandum - Verification Study: Comparison of the Static Flux Chamber Technique using Activated Charcoal Canisters to the USEPA Dynamic Flux Chamber and the PTG-7Rn Radon Detection Analyzer Conducted at the BMI Common Areas (Eastside) Revision 2; dated November 20, 2008
Mark Paris	Brian Rakvica	12/9/2008	BMI Plant Sites and Common Areas Projects - Lead in Health Risk Assessments
Mark Paris	Brian Rakvica	12/10/2008	NDEP's Response to: Standard Operating Procedures, SOP-16, Flux Chamber Source Testing dated November 20, 2008
Mark Paris	Brian Rakvica	12/10/2008	NDEP's Response to: BMI Complex CAMU Emergency Air Sampling Summary Report (Revised) dated November 28, 2008
Mark Paris	Brian Rakvica	12/10/2008	NDEP's Response to: Sampling and Analysis Plan for the Sunset North Commercial Sub-Area (SAP) dated November 2008 (received November 7, 2008)

Mark Paris	Brian Rakvica	12/10/2008	BMI Plant Sites and Common Areas Projects - Guidance on the Development of Summary Statistics Tables
Mark Paris	Brian Rakvica	12/11/2008	BMI Plant Sites and Common Areas Projects - Basic Comparison Levels User's Guide and Tables
Mark Paris	Brian Rakvica	12/13/2008	NDEP's Response to: Groundwater Flow Model Calibration dated November 4, 2008
Mark Paris	Brian Rakvica	12/14/2008	NDEP's Response to: Technical Memorandum - Data review and Health Risk Assessment for the Utility Corridor Sub-Area dated December 3, 2008
Mark Paris	Brian Rakvica	12/17/2008	NDEP's Response to: Groundwater Monitoring Plan Corrective Action Management Unit (CAMU) Area dated December 16, 2008
Mark Paris	Brian Rakvica	12/22/2008	NDEP's Response to: Phase II Construction Quality Assurance Report dated December 2008 (received December 15, 2008)
Mark Paris	Brian Rakvica	12/22/2008	NDEP's Response to: Technical Memorandum - Data Review for the 2008 CAMU Phases IIIB, IV and V Investigation dated December 18, 2008
Mark Paris	Brian Rakvica	12/22/2008	NDEP's Response to: Response to Nevada Division of Environmental Protection (NDEP) Comments, Dated November 4, 2008, Regarding BRC Response to NDEP Request for Vertical Delineation of Contaminant Plumes and Hydraulic Gradients, dated September 10, 2008 dated December 9, 2008
Mark Paris	Brian Rakvica	12/28/2008	NDEP's Response to: 2008 Deep Soil Background Report dated October 2008 (received October 7, 2008)

BRC ENVIRONMENTAL CLEANUP

ID	Task Name	Duration	Start	Finish	Predecessors	Qtr 1, 200	
						Jan	Feb
1	BRC SITE CLEANUP	1928 days	Wed 2/15/06	Fri 5/27/11			
2							
3	SUPPORTING DOCUMENTS AND ACTIVITIES	1263 days	Wed 2/15/06	Fri 7/31/09			
4							
5	AOC III	1232 days	Wed 2/15/06	Tue 6/30/09			
6	FINAL	1 day	Wed 2/15/06	Wed 2/15/06			
7	New Appendix (Previous NFAs) Submitted to NDEP. NDEP Review Ongoing	1 day	Thu 10/19/06	Thu 10/19/06			
8	Insert/Replace Revised Project Flow Diagram. BMI Companies Review Ongoing	1 day	Tue 6/30/09	Tue 6/30/09			
9	Initial Required Actions	639 days	Thu 4/13/06	Fri 1/11/08			
10	Notice to Successors in Title - Under NDEP Review	1 day	Thu 4/13/06	Thu 4/13/06			
11	Submit Revised Key Personnel Notice - FINAL	1 day	Wed 5/3/06	Wed 5/3/06			
12	Institutional Control Instrument - Under NDEP Review	1 day	Thu 4/13/06	Thu 4/13/06			
13	Revised QAPP (portions) Submitted to NDEP	1 day	Fri 1/11/08	Fri 1/11/08			
14	Advance Payment - FINAL	1 day	Thu 4/13/06	Thu 4/13/06			
15	Certificates of Insurance	1 day	Sun 12/31/06	Sun 12/31/06			
16	Ongoing Required Actions	472 days	Tue 1/15/08	Thu 4/30/09			
17	Annual Certificates of Insurance	1 day	Sun 2/15/09	Sun 2/15/09			
18	Annual Certification	1 day	Sat 1/31/09	Sat 1/31/09			
19	Quarterly Progress Report Q4 2007 - FINAL	1 day	Tue 1/15/08	Tue 1/15/08			
20	Quarterly Progress Report Q1 2008 - FINAL	1 day	Tue 4/15/08	Tue 4/15/08			
21	Quarterly Progress Report Q2 2008 - FINAL	1 day	Tue 7/15/08	Tue 7/15/08			
22	Quarterly Progress Report Q3 2008 - FINAL	1 day	Wed 10/15/08	Wed 10/15/08			
23	Quarterly Progress Report Q4 2008	1 day	Thu 1/15/09	Thu 1/15/09			
24	Quarterly Progress Report Q1 2009	1 day	Wed 4/15/09	Wed 4/15/09			
25	Annual Summary of Payments	1 day	Thu 4/30/09	Thu 4/30/09			
26	Submitted Revised Key Personnel Notice to NDEP	1 day	Sat 4/4/09	Sat 4/4/09			
27	NDEP Approval	1 day	Sat 4/4/09	Sat 4/4/09			
28							
29	Community Involvement Plan (CIP)	1159 days	Tue 3/14/06	Fri 5/15/09			
30	FINAL	1 day	Fri 2/8/08	Fri 2/8/08			
31	Implementation Activities	1159 days	Tue 3/14/06	Fri 5/15/09			
32	Project Factsheet 2006 - FINAL	1 day	Tue 3/14/06	Tue 3/14/06			
33	Project Factsheet 2006 Distribution - FINAL	1 day	Mon 5/15/06	Mon 5/15/06			
34	Project Factsheet 2007 - FINAL	1 day	Tue 5/15/07	Tue 5/15/07			
35	Project Factsheet 2008 - FINAL	1 day	Mon 6/30/08	Mon 6/30/08			
36	Project Factsheet 2009	1 day	Fri 5/15/09	Fri 5/15/09			
37	Project Informational Kiosk Opened	200 days	Tue 11/28/06	Fri 6/15/07			
38	Opened	1 day	Tue 11/28/06	Tue 11/28/06			

BRC ENVIRONMENTAL CLEANUP

ID	Task Name	Duration	Start	Finish	Predecessors	Qtr 1, 200	
						Jan	Feb
39	Panels Updated	1 day	Fri 6/15/07	Fri 6/15/07			
40	Project Website	1 day	Tue 3/31/09	Tue 3/31/09			
41	Documents Reorganization	1 day	Tue 3/31/09	Tue 3/31/09			
42	Project Document Repository Location Decision	1 day	Mon 1/14/08	Mon 1/14/08			
43							
44	Site Related Chemicals (SRCs)	1097 days	Mon 7/31/06	Fri 7/31/09			
45	FINAL (with completed MDL Studies)	1 day	Thu 9/14/06	Thu 9/14/06			
46	BRC Request for Deletion of Analytes for Soil Sampling	1 day	Wed 10/1/08	Wed 10/1/08			
47	NDEP Approval	1 day	Thu 10/16/08	Thu 10/16/08			
48	Project Laboratories Complete Certification	1097 days	Mon 7/31/06	Fri 7/31/09			
49	STL	1 day	Mon 7/31/06	Mon 7/31/06			
50	Alpha	1 day	Mon 7/31/06	Mon 7/31/06			
51	TestAmerica/DelMar	1 day	Mon 7/31/06	Mon 7/31/06			
52	Southwest Analytical	1 day	Mon 7/31/06	Mon 7/31/06			
53	EMS/EMSL Labs	1 day	Mon 7/31/06	Mon 7/31/06			
54	GEL	1 day	Wed 4/30/08	Wed 4/30/08			
55	Confirm that labs are maintaining certifications	1 day	Fri 7/31/09	Fri 7/31/09			
56							
57	FSP/SOPs	794 days	Mon 10/30/06	Wed 12/31/08			
58	FINAL	1 day	Mon 10/30/06	Mon 10/30/06			
59	Current Final Set (inc. SOP-42)	1 day	Wed 12/31/08	Wed 12/31/08			
60							
61	PAMP	466 days	Thu 1/31/08	Sun 5/10/09			
62	Submitted Revised PAMP to NDEP	1 day	Wed 2/27/08	Wed 2/27/08			
63	NDEP Approval	1 day	Thu 2/28/08	Thu 2/28/08	62		
64	Baseline - Phase I Monitoring Complete	1 day	Sun 5/11/08	Sun 5/11/08			
65	Baseline Data Discussion with NDEP	1 day	Tue 7/1/08	Tue 7/1/08			
66	Baseline Report Due to NDEP	1 day	Mon 7/21/08	Mon 7/21/08			
67	Phase II Sampling Letter to NDEP (Wet Materials - No Hauling)	1 day	Thu 7/10/08	Thu 7/10/08			
68	Phase II and Phase IIA Field Sampling	90 days	Wed 7/23/08	Mon 10/20/08			
69	Revised PAMP and Phase III Workplan to NDEP	1 day	Wed 10/15/08	Wed 10/15/08			
70	NDEP Approval for Phase III and Revised PAMP	7 days	Thu 10/16/08	Wed 10/22/08	69		
71	Implement Phase III	200 days	Thu 10/23/08	Sun 5/10/09	70		
72	Haul Road Sampling Completed	1 day	Sat 12/27/08	Sat 12/27/08			
73	Report To NDEP	1 day	Thu 1/31/08	Thu 1/31/08			
74	Dry Ponds Sampling	15 days	Tue 1/6/09	Tue 1/20/09			
75	Acid Gas Sampling	2 days	Wed 12/17/08	Thu 12/18/08			
76	Report to NDEP	1 day	Wed 1/14/09	Wed 1/14/09			

BRC ENVIRONMENTAL CLEANUP

ID	Task Name	Duration	Start	Finish	Predecessors	Qtr 1, 200	
						Jan	Feb
77							
78	Background Investigations	639 days	Mon 7/2/07	Tue 3/31/09			
79	Shallow Soils Background (Metals/Rads)	597 days	Mon 7/2/07	Tue 2/17/09			
80	FINAL	1 day	Mon 7/2/07	Mon 7/2/07			
81	Supplemental Shallow Soils Background	97 days	Thu 11/13/08	Tue 2/17/09			
82	NDEP Conditional Approval	1 day	Thu 11/13/08	Thu 11/13/08			
83	Revised Report to NDEP	1 day	Fri 12/19/08	Fri 12/19/08			
84	NDEP Review and Approval	60 days	Sat 12/20/08	Tue 2/17/09	83		
85	Surface Soils Background (Other Compounds)	1 day	Wed 10/10/07	Wed 10/10/07			
86	OC Pesticides - Data Collected	1 day	Wed 10/10/07	Wed 10/10/07			
87	Deep Soil Horizons	163 days	Sat 10/4/08	Sun 3/15/09			
88	Report Submitted to NDEP	1 day	Sat 10/4/08	Sat 10/4/08			
89	NDEP Comments Recd	1 day	Sun 12/28/08	Sun 12/28/08			
90	Revised Report to NDEP	1 day	Sun 3/15/09	Sun 3/15/09			
91	Qa/Other Horizons Groundwater Eastside	31 days	Sun 3/1/09	Tue 3/31/09			
92	Draft Report to NDEP	1 day	Sun 3/1/09	Sun 3/1/09			
93	NDEP Approval	30 days	Mon 3/2/09	Tue 3/31/09	92		
94	Qa/Other Horizons Groundwater CAMU Area	1 day	Wed 12/31/08	Wed 12/31/08			
95	To Be Determined	1 day	Wed 12/31/08	Wed 12/31/08			
96							
97	RTCs For NDEP Comments	275 days	Wed 2/15/06	Thu 11/16/06			
98	Submit BRC RTCs for Specified Older NDEP Comments	46 days	Wed 2/15/06	Sat 4/1/06			
99	Submit BRC RTC for NDEP July 11, 2005 Comments	46 days	Wed 2/15/06	Sat 4/1/06			
100	Notice That No NDEP Comments Will Be Issued	1 day	Thu 11/16/06	Thu 11/16/06			
101							
102	Eastside Groundwater Investigation	1116 days	Fri 2/17/06	Sun 3/8/09			
103	Workplan - FINAL	1 day	Fri 2/17/06	Fri 2/17/06			
104	First Quarter // Second Quarter // Third Quarter // Fourth Quarter	1 day	Fri 11/9/07	Fri 11/9/07			
105	Reports - FINAL	1 day	Fri 11/9/07	Fri 11/9/07			
106	Fifth Quarterly Event	75 days	Wed 12/24/08	Sun 3/8/09			
107	Report Submitted to NDEP	1 day	Wed 12/24/08	Wed 12/24/08			
108	NDEP Comments Received	1 day	Wed 1/7/09	Wed 1/7/09			
109	Revised Report Resubmittal to NDEP (with extension)	60 days	Thu 1/8/09	Sun 3/8/09	108		
110							
111	Screening Investigations for PCBs	32 days	Mon 6/12/06	Thu 7/13/06			
112	Submit Workplan	1 day	Mon 6/12/06	Mon 6/12/06			
113	NDEP Comments Received	1 day	Tue 7/11/06	Tue 7/11/06			
114	BRC Response/Defer Workplan	1 day	Thu 7/13/06	Thu 7/13/06			

BRC ENVIRONMENTAL CLEANUP

ID	Task Name	Duration	Start	Finish	Predecessors	Qtr 1, 200	
						Jan	Feb
115							
116	Off-Site Dust Sampling	529 days	Thu 11/30/06	Sun 5/11/08			
117	Report Submitted to NDEP	1 day	Thu 11/30/06	Thu 11/30/06			
118	Submitted Revised Report Per Most Recent NDEP Comments	1 day	Mon 4/30/07	Mon 4/30/07			
119	NDEP Response Letter	1 day	Thu 5/31/07	Thu 5/31/07			
120	Obtained Bids for Data Collection	1 day	Sat 9/1/07	Sat 9/1/07			
121	Collect Baseline Data (See PAMP Above)	1 day	Sun 5/11/08	Sun 5/11/08			
122							
123	Removal of Recent IDW	31 days	Tue 1/15/08	Thu 2/14/08			
124	Complete NDEP Discussions Re. Profiling	1 day	Tue 1/15/08	Tue 1/15/08			
125	Remove IDW	30 days	Wed 1/16/08	Thu 2/14/08	124		
126							
127	Radionuclide Secular Equilibrium Verification	608 days	Thu 11/1/07	Tue 6/30/09			
128	Submitted Calculations to NDEP for Review	1 day	Thu 11/1/07	Thu 11/1/07			
129	Expected Completion of NDEP Review	1 day	Tue 6/30/09	Tue 6/30/09			
130							
131	EASTSIDE SOILS (IMPLEMENTATION OF SOILS ROD)	1730 days	Fri 9/1/06	Fri 5/27/11			
132							
133	CLOSURE PLAN (Inc. Site-Wide DQOs)	1 day	Mon 7/16/07	Mon 7/16/07			
134	FINAL	1 day	Mon 7/16/07	Mon 7/16/07			
135							
136	STATISTICAL CLOSURE Report	1 day	Fri 9/1/06	Fri 9/1/06			
137	FINAL	1 day	Fri 9/1/06	Fri 9/1/06			
138							
139	EASTSIDE CSM REPORT	938 days	Tue 2/27/07	Mon 9/21/09			
140	Legacy Data Validation Reports Finalized	1 day	Tue 2/27/07	Tue 2/27/07	386FS-1 day		
141	Begin Preparation of Draft CSM Report	1 day	Fri 4/24/09	Fri 4/24/09	140,148,159,93		
142	Submit Draft CSM Report to NDEP	60 days	Sat 4/25/09	Tue 6/23/09	141		
143	NDEP Review	30 days	Wed 6/24/09	Thu 7/23/09	142		
144	Submit Final CSM to NDEP	30 days	Fri 7/24/09	Sat 8/22/09	143		
145	OBTAIN Eastside CSM NDEP "Approval" (Living Doc)	30 days	Sun 8/23/09	Mon 9/21/09	144		
146							
147	Eastside - Northeast Area Shallow Groundwater	151 days	Tue 7/24/07	Fri 12/21/07			
148	Complete field implementation / well installation	1 day	Tue 7/24/07	Tue 7/24/07			
149	Complete Soil Boring Data Analysis and Submit Data Report to NDEP	1 day	Fri 12/21/07	Fri 12/21/07			
150							
151	Eastside Aquifer Testing/Slug Testing and Groundwater Modeling	893 days	Wed 12/13/06	Sat 5/23/09			
152	Modeling Workplan - FINAL	1 day	Wed 12/13/06	Wed 12/13/06			

BRC ENVIRONMENTAL CLEANUP

ID	Task Name	Duration	Start	Finish	Predecessors	Qtr 1, 200	
						Jan	Feb
153	Aquifer Testing Report - FINAL	1 day	Mon 12/3/07	Mon 12/3/07			
154	Slug Testing Report - FINAL	1 day	Wed 12/12/07	Wed 12/12/07			
155	Tech Memo - CONDITIONAL FINAL	1 day	Tue 6/17/08	Tue 6/17/08			
156	Calibration Report - CONDITIONAL APPROVAL	1 day	Sat 12/13/08	Sat 12/13/08			
157	RTC for Calibration Report Due to NDEP	1 day	Fri 1/23/09	Fri 1/23/09			
158	Complete Predictive Modeling Runs and Submit to NDEP	60 days	Sat 1/24/09	Tue 3/24/09	157		
159	NDEP Review	30 days	Wed 3/25/09	Thu 4/23/09	158		
160	Obtain Approval for Modeling Results	30 days	Fri 4/24/09	Sat 5/23/09	159		
161							
162	Eastside Deep Groundwater/ Fifth Quarter Investigation	395 days	Fri 2/8/08	Sun 3/8/09			
163	Workplan Approved by NDEP	1 day	Fri 2/8/08	Fri 2/8/08			
164	Field Implementation Planning and Field Implementation	166 days	Sat 2/9/08	Wed 7/23/08	163		
165	Report Submitted to NDEP	1 day	Wed 12/24/08	Wed 12/24/08			
166	NDEP Comments Received	1 day	Wed 1/7/09	Wed 1/7/09			
167	Revised Report Resubmittal to NDEP (with extension)	60 days	Thu 1/8/09	Sun 3/8/09	166		
168							
169	EASTSIDE CLEANUP ACTIVITIES	1123 days	Wed 4/30/08	Fri 5/27/11			
170							
171	[1] 4A AREA	1 day	Thu 5/15/08	Thu 5/15/08			
172	NFA Obtained	1 day	Thu 5/15/08	Thu 5/15/08			
173							
174	[1] 4B AREA	17 days	Sun 2/15/09	Tue 3/3/09			
175	Submit Closure Report to NDEP	1 day	Sun 2/15/09	Sun 2/15/09			
176	NDEP Review	15 days	Mon 2/16/09	Mon 3/2/09	175		
177	Reaffirm NFA	1 day	Tue 3/3/09	Tue 3/3/09	176		
178							
179	[1A] CoH UTILITY CORRIDOR SUB-AREA	46 days	Thu 1/8/09	Sun 2/22/09			
180	Partial NFA Obtained	1 day	Thu 1/8/09	Thu 1/8/09			
181	Revised Risk Assessment Report Due to NDEP	45 days	Fri 1/9/09	Sun 2/22/09	180		
182							
183	[2] MOHAWK SUB-AREA	428 days	Wed 4/30/08	Wed 7/1/09			
184	Workplan Approved	1 day	Wed 4/30/08	Wed 4/30/08	137,288,134		
185	Field Sampling Completed - Rescrape 2	1 day	Mon 1/12/09	Mon 1/12/09			
186	Laboratory Data Analysis	35 days	Tue 1/13/09	Mon 2/16/09	185		
187	Data Validation Complete	21 days	Tue 2/3/09	Mon 2/23/09	186SS+21 days		
188	Data Useability and Risk Assessment Draft Complete	30 days	Tue 2/24/09	Wed 3/25/09	187		
189	Prepare Draft Closure Report	15 days	Thu 3/26/09	Thu 4/9/09	188		
190	SUBMIT Draft Closure Report to NDEP	1 day	Fri 4/10/09	Fri 4/10/09	189		

BRC ENVIRONMENTAL CLEANUP

ID	Task Name	Duration	Start	Finish	Predecessors	Qtr 1, 200	
						Jan	Feb
191	NDEP Review	30 days	Sat 4/11/09	Sun 5/10/09	190		
192	INCORPORATE NDEP Comments	21 days	Mon 5/11/09	Sun 5/31/09	191		
193	SUBMIT FINAL to NDEP	1 day	Mon 6/1/09	Mon 6/1/09	192		
194	OBTAIN NFAD	30 days	Tue 6/2/09	Wed 7/1/09	193		
195							
196	[3] WESTERN (RESIDENTIAL) HOOK SUB-AREA	426 days	Tue 8/5/08	Sun 10/4/09			
197	NDEP Approval	1 day	Tue 8/5/08	Tue 8/5/08			
198	Field Sampling - Round 1 Completed	30 days	Tue 12/16/08	Wed 1/14/09	197,47,213		
199	Laboratory Data Analysis	45 days	Thu 1/15/09	Sat 2/28/09	198		
200	Scrape Potential Contaminated Areas and Resample	30 days	Sun 3/1/09	Mon 3/30/09	199		
201	Laboratory Data Analysis	35 days	Tue 3/31/09	Mon 5/4/09	200		
202	Data Validation Complete	30 days	Thu 4/30/09	Fri 5/29/09	201SS+30 days		
203	Data Useability and Risk Assessment Draft Complete	30 days	Sat 5/30/09	Sun 6/28/09	202		
204	Prepare Draft Closure Report	15 days	Mon 6/29/09	Mon 7/13/09	203		
205	SUBMIT Draft Closure Report to NDEP	1 day	Tue 7/14/09	Tue 7/14/09	204		
206	NDEP Review	30 days	Wed 7/15/09	Thu 8/13/09	205		
207	INCORPORATE NDEP Comments	21 days	Fri 8/14/09	Thu 9/3/09	206		
208	SUBMIT FINAL to NDEP	1 day	Fri 9/4/09	Fri 9/4/09	207		
209	OBTAIN NFAD	30 days	Sat 9/5/09	Sun 10/4/09	208		
210							
211	[4] GAMING/Southern RIBS SUB-AREA	359 days	Thu 9/11/08	Fri 9/4/09			
212	NDEP Approval	1 day	Thu 9/11/08	Thu 9/11/08			
213	Field Sampling	60 days	Fri 10/17/08	Mon 12/15/08	212,47		
214	Laboratory Data Analysis	45 days	Tue 12/16/08	Thu 1/29/09	213		
215	Scrape Potential Contaminated Areas and Resample	30 days	Fri 1/30/09	Sat 2/28/09	214		
216	Laboratory Data Analysis	35 days	Sun 3/1/09	Sat 4/4/09	215		
217	Data Validation Complete	30 days	Tue 3/31/09	Wed 4/29/09	216SS+30 days		
218	Data Useability and Risk Assessment Draft Complete	30 days	Thu 4/30/09	Fri 5/29/09	217		
219	Prepare Draft Closure Report	15 days	Sat 5/30/09	Sat 6/13/09	218		
220	SUBMIT Draft Closure Report to NDEP	1 day	Sun 6/14/09	Sun 6/14/09	219		
221	NDEP Review	30 days	Mon 6/15/09	Tue 7/14/09	220		
222	INCORPORATE NDEP Comments	21 days	Wed 7/15/09	Tue 8/4/09	221		
223	SUBMIT FINAL to NDEP	1 day	Wed 8/5/09	Wed 8/5/09	222		
224	OBTAIN NFAD	30 days	Thu 8/6/09	Fri 9/4/09	223		
225							
226	[5] GALLERIA NORTH SUB-AREA	364 days	Wed 11/12/08	Tue 11/10/09			
227	NDEP Approval	1 day	Wed 11/12/08	Wed 11/12/08			
228	Field Sampling (Flux and Non-Flux)	25 days	Tue 1/27/09	Fri 2/20/09	243		

BRC ENVIRONMENTAL CLEANUP

ID	Task Name	Duration	Start	Finish	Predecessors	Qtr 1, 200	
						Jan	Feb
229	Laboratory Data Analysis	45 days	Sat 2/21/09	Mon 4/6/09	228		
230	Scrape Potential Contaminated Areas and Resample	30 days	Tue 4/7/09	Wed 5/6/09	229		
231	Laboratory Data Analysis	35 days	Thu 5/7/09	Wed 6/10/09	230		
232	Data Validation Complete	30 days	Sat 6/6/09	Sun 7/5/09	231SS+30 days		
233	Data Useability and Risk Assessment Draft Complete	30 days	Mon 7/6/09	Tue 8/4/09	232		
234	Prepare Draft Closure Report	15 days	Wed 8/5/09	Wed 8/19/09	233		
235	SUBMIT Draft Closure Report to NDEP	1 day	Thu 8/20/09	Thu 8/20/09	234		
236	NDEP Review	30 days	Fri 8/21/09	Sat 9/19/09	235		
237	INCORPORATE NDEP Comments	21 days	Sun 9/20/09	Sat 10/10/09	236		
238	SUBMIT FINAL to NDEP	1 day	Sun 10/11/09	Sun 10/11/09	237		
239	OBTAIN NFAD	30 days	Mon 10/12/09	Tue 11/10/09	238		
240							
241	[6] SUNSET NORTH SUB-AREA	335 days	Wed 12/10/08	Mon 11/9/09			
242	NDEP Approval	1 day	Wed 12/10/08	Wed 12/10/08			
243	Field Sampling - Non Flux Samples	14 days	Tue 1/13/09	Mon 1/26/09			
244	Field Sampling - Flux Samples	14 days	Fri 2/6/09	Thu 2/19/09			
245	Laboratory Data Analysis	45 days	Fri 2/20/09	Sun 4/5/09	244,243		
246	Scrape Potential Contaminated Areas and Resample	30 days	Mon 4/6/09	Tue 5/5/09	245		
247	Laboratory Data Analysis	35 days	Wed 5/6/09	Tue 6/9/09	246		
248	Data Validation Complete	30 days	Fri 6/5/09	Sat 7/4/09	247SS+30 days		
249	Data Useability and Risk Assessment Draft Complete	30 days	Sun 7/5/09	Mon 8/3/09	248		
250	Prepare Draft Closure Report	15 days	Tue 8/4/09	Tue 8/18/09	249		
251	SUBMIT Draft Closure Report to NDEP	1 day	Wed 8/19/09	Wed 8/19/09	250		
252	NDEP Review	30 days	Thu 8/20/09	Fri 9/18/09	251		
253	INCORPORATE NDEP Comments	21 days	Sat 9/19/09	Fri 10/9/09	252		
254	SUBMIT FINAL to NDEP	1 day	Sat 10/10/09	Sat 10/10/09	253		
255	OBTAIN NFAD	30 days	Sun 10/11/09	Mon 11/9/09	254		
256							
257	[Asbestos Only] Remaining Areas Except Remediation Areas	137 days	Mon 10/13/08	Thu 2/26/09			
258	NDEP Approval	1 day	Mon 10/13/08	Mon 10/13/08			
259	Field Sampling Completed	1 day	Mon 1/12/09	Mon 1/12/09			
260	Laboratory Analysis	45 days	Tue 1/13/09	Thu 2/26/09	259		
261							
262	[7] FIRST EIGHT ROWS - PHASE I SUB-AREA	300 days	Wed 4/1/09	Mon 1/25/10			
263	Activities Similar To Above	300 days	Wed 4/1/09	Mon 1/25/10			
264							
265	[8] OPEN SPACE HOOK SUB-AREA	301 days	Fri 1/23/09	Thu 11/19/09			
266	Confirmation SAP to NDEP for Review/Approval	1 day	Fri 1/23/09	Fri 1/23/09			

BRC ENVIRONMENTAL CLEANUP

ID	Task Name	Duration	Start	Finish	Predecessors	Qtr 1, 200	
						Jan	Feb
267	Activities Similar to Above	300 days	Sat 1/24/09	Thu 11/19/09	266		
268							
269	[9] UPPER PONDS SUB-AREA	301 days	Fri 1/30/09	Thu 11/26/09			
270	Confirmation SAP to NDEP for Review/Approval	1 day	Fri 1/30/09	Fri 1/30/09			
271	Activities Similar to Above	300 days	Sat 1/31/09	Thu 11/26/09	270		
272							
273	[10] FIRST EIGHT ROWS - PHASE II SUB-AREA	300 days	Sun 11/1/09	Fri 8/27/10			
274	Activities Similar To Above	300 days	Sun 11/1/09	Fri 8/27/10			
275							
276	[11] TIMET PONDS SUB-AREA	300 days	Mon 2/1/10	Sat 11/27/10			
277	Activities Similar to Above	300 days	Mon 2/1/10	Sat 11/27/10			
278							
279	[12] SPRAY WHEEL SUB-AREA	300 days	Sat 5/1/10	Thu 2/24/11			
280	Activities Similar To Above	300 days	Sat 5/1/10	Thu 2/24/11			
281							
282	[13] STAGING AREA SUB-AREA	300 days	Sun 8/1/10	Fri 5/27/11			
283	Activities Similar To Above	300 days	Sun 8/1/10	Fri 5/27/11			
284							
285							
286	CAMU AREA - CAP, RAP, BORROW AREA, SLIT TRENCHES	1188 days	Fri 9/22/06	Tue 12/22/09			
287	CAP	1 day	Mon 9/25/06	Mon 9/25/06			
288	FINAL	1 day	Mon 9/25/06	Mon 9/25/06			
289							
290	RAP	179 days	Mon 9/17/07	Thu 3/13/08			
291	FINAL (after NDEP Design Review)	1 day	Wed 3/5/08	Wed 3/5/08			
292							
293	TRI Inapplicability Letter	3 days	Tue 3/11/08	Thu 3/13/08			
294	Letter Submitted By BRC to NDEP	1 day	Tue 3/11/08	Tue 3/11/08			
295	NDEP Approval	1 day	Thu 3/13/08	Thu 3/13/08			
296							
297	Slit Trench RAS	1 day	Mon 9/17/07	Mon 9/17/07			
298	FINAL - RAS and ROD Issued	1 day	Mon 9/17/07	Mon 9/17/07			
299							
300	CAMU CSM	1 day	Wed 8/8/07	Wed 8/8/07			
301	FINAL - (Living Doc)	1 day	Wed 8/8/07	Wed 8/8/07			
302							
303	CAMU Construction (Material Placement)	340 days	Sat 1/17/09	Tue 12/22/09			
304	Phase I (Interim Cover)	1 day	Sat 1/17/09	Sat 1/17/09			

BRC ENVIRONMENTAL CLEANUP

ID	Task Name	Duration	Start	Finish	Predecessors	Qtr 1, 200	
						Jan	Feb
305	Phase II (Interim Cover)	1 day	Tue 5/12/09	Tue 5/12/09			
306	Phase IIIA (Interim Cover)	1 day	Fri 6/12/09	Fri 6/12/09			
307	Phase IIIB (Interim Cover)	1 day	Tue 8/11/09	Tue 8/11/09			
308	Phase IV (Interim Cover)	1 day	Fri 10/16/09	Fri 10/16/09			
309	Phase V (Interim Cover)	1 day	Tue 12/22/09	Tue 12/22/09			
310							
311	CAMU Area Groundwater Monitoring	105 days	Fri 11/7/08	Thu 2/19/09			
312	NDEP Approval of Baseline Sampling Workplan	1 day	Wed 12/17/08	Wed 12/17/08			
313	Q1 Field Sampling	105 days	Fri 11/7/08	Thu 2/19/09			
314	Laboratory Analysis	45 days	Fri 11/7/08	Sun 12/21/08			
315	Data Validation	30 days	Mon 12/22/08	Tue 1/20/09	314		
316	Data Report to NDEP for Review/Approval	30 days	Wed 1/21/09	Thu 2/19/09	315		
317	Q2 Field Sampling	105 days	Fri 11/7/08	Thu 2/19/09			
318	Laboratory Analysis	45 days	Fri 11/7/08	Sun 12/21/08			
319	Data Validation	30 days	Mon 12/22/08	Tue 1/20/09	318		
320	Data Report to NDEP for Review/Approval	30 days	Wed 1/21/09	Thu 2/19/09	319		
321	Q3 Field Sampling	105 days	Fri 11/7/08	Thu 2/19/09			
322	Laboratory Analysis	45 days	Fri 11/7/08	Sun 12/21/08			
323	Data Validation	30 days	Mon 12/22/08	Tue 1/20/09	322		
324	Data Report to NDEP for Review/Approval	30 days	Wed 1/21/09	Thu 2/19/09	323		
325	Q4 Field Sampling	105 days	Fri 11/7/08	Thu 2/19/09			
326	Laboratory Analysis	45 days	Fri 11/7/08	Sun 12/21/08			
327	Data Validation	30 days	Mon 12/22/08	Tue 1/20/09	326		
328	Data Report to NDEP for Review/Approval	30 days	Wed 1/21/09	Thu 2/19/09	327		
329							
330	Safety Equipment For NDEP	29 days	Fri 9/22/06	Fri 10/20/06			
331	Procurement Requested	1 day	Fri 9/22/06	Fri 9/22/06			
332	Equipment Obtained and Received By NDEP	1 day	Fri 10/20/06	Fri 10/20/06			
333							
334	OTHER POTENTIAL ACTIONS (BEYOND SOILS ROD)	867 days	Thu 8/9/07	Tue 12/22/09			
335							
336	Eastside Groundwater RAS Development	122 days	Sun 8/23/09	Tue 12/22/09			
337	Develop Draft RAS	60 days	Sun 8/23/09	Wed 10/21/09	144		
338	Submit to NDEP	1 day	Thu 10/22/09	Thu 10/22/09	337		
339	NDEP Review and Resubmittal	60 days	Fri 10/23/09	Mon 12/21/09	338		
340	Draft ROD Issued	1 day	Tue 12/22/09	Tue 12/22/09	339		
341							
342	Investigations of Western Ditch Between CAMU and Lower Ponds	1 day	Mon 6/1/09	Mon 6/1/09			

BRC ENVIRONMENTAL CLEANUP

ID	Task Name	Duration	Start	Finish	Predecessors	Qtr 1, 200	
						Jan	Feb
343	To Be Determined	1 day	Mon 6/1/09	Mon 6/1/09			
344							
345	Investigations of North Western Ditch Between CAMU and Lower Ponds	1 day	Mon 6/1/09	Mon 6/1/09			
346	To Be Determined	1 day	Mon 6/1/09	Mon 6/1/09			
347							
348	Investigations of BMI Siphon	1 day	Mon 6/1/09	Mon 6/1/09			
349	To Be Determined	1 day	Mon 6/1/09	Mon 6/1/09			
350							
351	Non-Intrusive Investigation of Trade Effluent Ponds in Common Areas	1 day	Thu 8/9/07	Thu 8/9/07			
352	Being Done As Part of CAMU Area Investigations	1 day	Thu 8/9/07	Thu 8/9/07	301		
353							
354	Non-Intrusive Investigation of Closed BMI Landfills	1 day	Thu 8/9/07	Thu 8/9/07			
355	Being Done As Part of CAMU Area Investigations	1 day	Thu 8/9/07	Thu 8/9/07	301		
356							
357	Other Media RAS Development	1 day	Mon 6/1/09	Mon 6/1/09			
358	To Be Determined	1 day	Mon 6/1/09	Mon 6/1/09			
359							
360							
361	DATA VALIDATION SUMMARY REPORTS	1201 days	Wed 2/15/06	Sat 5/30/09			
362	CAMU-Area Data-Sets	87 days	Tue 6/13/06	Thu 9/7/06			
363	Set #3 Landfill Monitoring (GW) - FINAL	22 days	Wed 6/14/06	Wed 7/5/06			
364	a) Quarter 1 Landfill Monitoring - FINAL	1 day	Wed 7/5/06	Wed 7/5/06			
365	b) Quarter 2 Landfill Monitoring - FINAL	1 day	Wed 6/14/06	Wed 6/14/06			
366	c) Quarter 3 Landfill Monitoring - FINAL	1 day	Wed 6/14/06	Wed 6/14/06			
367	d) Quarter 4 Landfill Monitoring - FINAL	1 day	Wed 6/14/06	Wed 6/14/06			
368	Set #10 Borrow Area Investigation - FINAL	1 day	Tue 6/13/06	Tue 6/13/06			
369	Set #11 Slit Trench Investigation - FINAL	1 day	Tue 6/13/06	Tue 6/13/06			
370	a) May 2000 field event - FINAL	1 day	Tue 6/13/06	Tue 6/13/06			
371	b) July 2000 field event - FINAL	1 day	Tue 6/13/06	Tue 6/13/06			
372	Set #13 CAMU Investigations - FINAL	23 days	Tue 6/13/06	Wed 7/5/06			
373	a) April 2000 field event - FINAL	1 day	Tue 6/13/06	Tue 6/13/06			
374	b) July 2000 field event - FINAL	1 day	Tue 6/13/06	Tue 6/13/06			
375	c) Nov 2000 field event (WDE locs) - FINAL	1 day	Wed 7/5/06	Wed 7/5/06			
376	d) March 2001 field event (follow on WDE) - FINAL	1 day	Tue 6/13/06	Tue 6/13/06			
377	Set #15 Power Pole Excavation Investigation - FINAL	1 day	Fri 9/1/06	Fri 9/1/06			
378	Set #26 Borrow Area Investigation - FINAL	22 days	Tue 8/8/06	Tue 8/29/06			
379	a) Initial Investigation - FINAL	1 day	Tue 8/8/06	Tue 8/8/06			
380	b) Supplemental investigation - FINAL	1 day	Tue 8/29/06	Tue 8/29/06			

BRC ENVIRONMENTAL CLEANUP

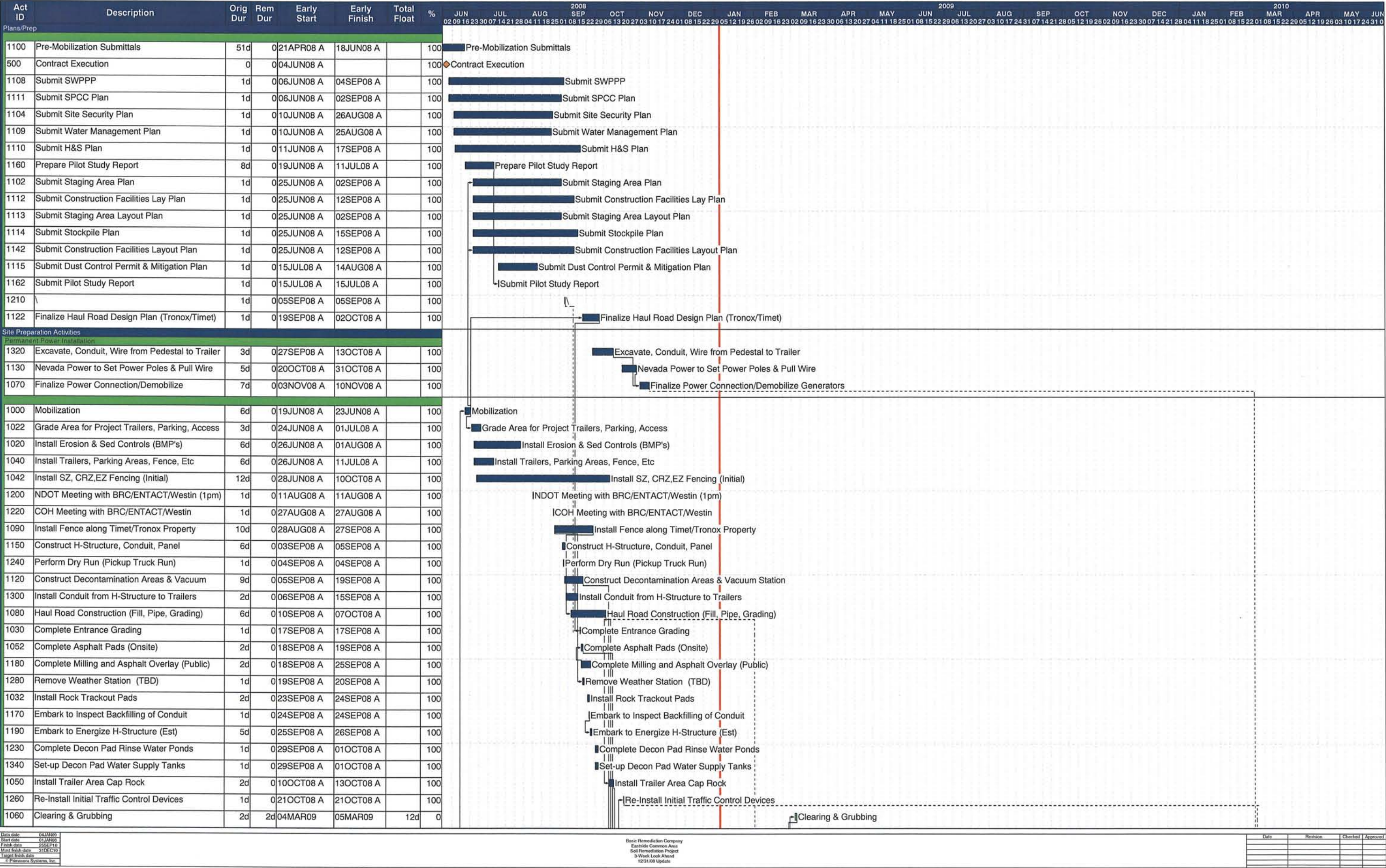
ID	Task Name	Duration	Start	Finish	Predecessors	Qtr 1, 200	
						Jan	Feb
381	Set #28 Slit Trench Soil Investigation - FINAL	1 day	Wed 8/16/06	Wed 8/16/06			
382	Set #29 Slit Trench Soil Vapor Investigation - FINAL	1 day	Wed 7/26/06	Wed 7/26/06			
383	Set #30 CAMU Hydro Investigation - FINAL	1 day	Tue 8/29/06	Tue 8/29/06			
384	Set #36 2006 Borrow Area Investigation - FINAL	1 day	Thu 9/7/06	Thu 9/7/06			
385							
386	Eastside Area Data-Sets	378 days	Wed 2/15/06	Tue 2/27/07			
387	Set #1 Environmental Conditions Investigation	1 day	Tue 9/12/06	Tue 9/12/06			
388	a) Upper & Lower Ponds and Ditches - FINAL	1 day	Tue 9/12/06	Tue 9/12/06			
389	Set #4 Preliminary GW Investigation (DM wells) - FINAL	1 day	Tue 12/5/06	Tue 12/5/06			
390	Set #6 1999 Ponds Supplemental Soil Investigations	16 days	Tue 10/10/06	Wed 10/25/06			
391	a) Berm Samples - FINAL	1 day	Wed 10/25/06	Wed 10/25/06			
392	b) At-Depth Samples (to 15 ft bgs) - FINAL	1 day	Wed 10/25/06	Wed 10/25/06			
393	c) New SRC sampling - FINAL	1 day	Tue 10/10/06	Tue 10/10/06			
394	d) Miscellaneous (At-Depth Samples, expanded rads & pesticides, addit. SI	1 day	Tue 10/10/06	Tue 10/10/06			
395	Set #7 Upper & Lower Ponds IRM Sampling	52 days	Wed 9/13/06	Fri 11/3/06			
396	a) Mohawk - FINAL	1 day	Tue 10/17/06	Tue 10/17/06			
397	b) Sunset - FINAL	1 day	Wed 9/13/06	Wed 9/13/06			
398	c) Sunset pit sampling for asbestos - FINAL	1 day	Thu 10/26/06	Thu 10/26/06			
399	d) Blackened soil area - FINAL	1 day	Thu 9/14/06	Thu 9/14/06			
400	e) PLF-05 fill sampling - FINAL	1 day	Fri 11/3/06	Fri 11/3/06			
401	Set #8 ERM Ponds Supplemental Investigation	43 days	Thu 9/14/06	Thu 10/26/06			
402	a) Discrete/composite sampling event - FINAL	1 day	Tue 10/10/06	Tue 10/10/06			
403	b) Sunset North Area - FINAL	1 day	Thu 9/14/06	Thu 9/14/06			
404	c) Sunset North Area – October PR samples - FINAL	1 day	Thu 10/26/06	Thu 10/26/06			
405	Set #9 TIMET Ponds Investigation - FINAL	1 day	Fri 11/3/06	Fri 11/3/06			
406	Set #12 Spray Wheel Investigation - FINAL	1 day	Wed 10/25/06	Wed 10/25/06			
407	Set #14 "College Site" Investigation - FINAL	1 day	Wed 11/8/06	Wed 11/8/06			
408	Set #16 Tuscan Hills Pipeline Vault investigation - FINAL	1 day	Thu 8/31/06	Thu 8/31/06			
409	Set #18 WRF Investigation By CoH - FINAL	1 day	Mon 5/1/06	Mon 5/1/06			
410	Set #19 Mohawk Supplemental Investigation (PR samples) - FINAL	1 day	Fri 12/8/06	Fri 12/8/06			
411	Set #20 Sunset North Investigations	131 days	Fri 10/20/06	Tue 2/27/07			
412	a) PLG-05 GW Characterization - FINAL	1 day	Fri 1/5/07	Fri 1/5/07			
413	b) Sampling of "unimpacted" areas - FINAL	1 day	Fri 10/20/06	Fri 10/20/06			
414	c) Supp. Invest. (PR samples) - FINAL	1 day	Tue 2/27/07	Tue 2/27/07			
415	Set #21 Southern RIBs Investigation - FINAL	1 day	Wed 10/25/06	Wed 10/25/06			
416	Set #22 Pre-GW Policy Upper Ponds GW Investigation - FINAL	1 day	Tue 9/26/06	Tue 9/26/06			
417	Set #23 Spray Wheel Investigation [M] - Geotechnical Only. No DVSR	1 day	Wed 2/15/06	Wed 2/15/06			
418	Set #25 Pittman Lateral Bypass Pipeline Investigation - FINAL	1 day	Wed 10/25/06	Wed 10/25/06			

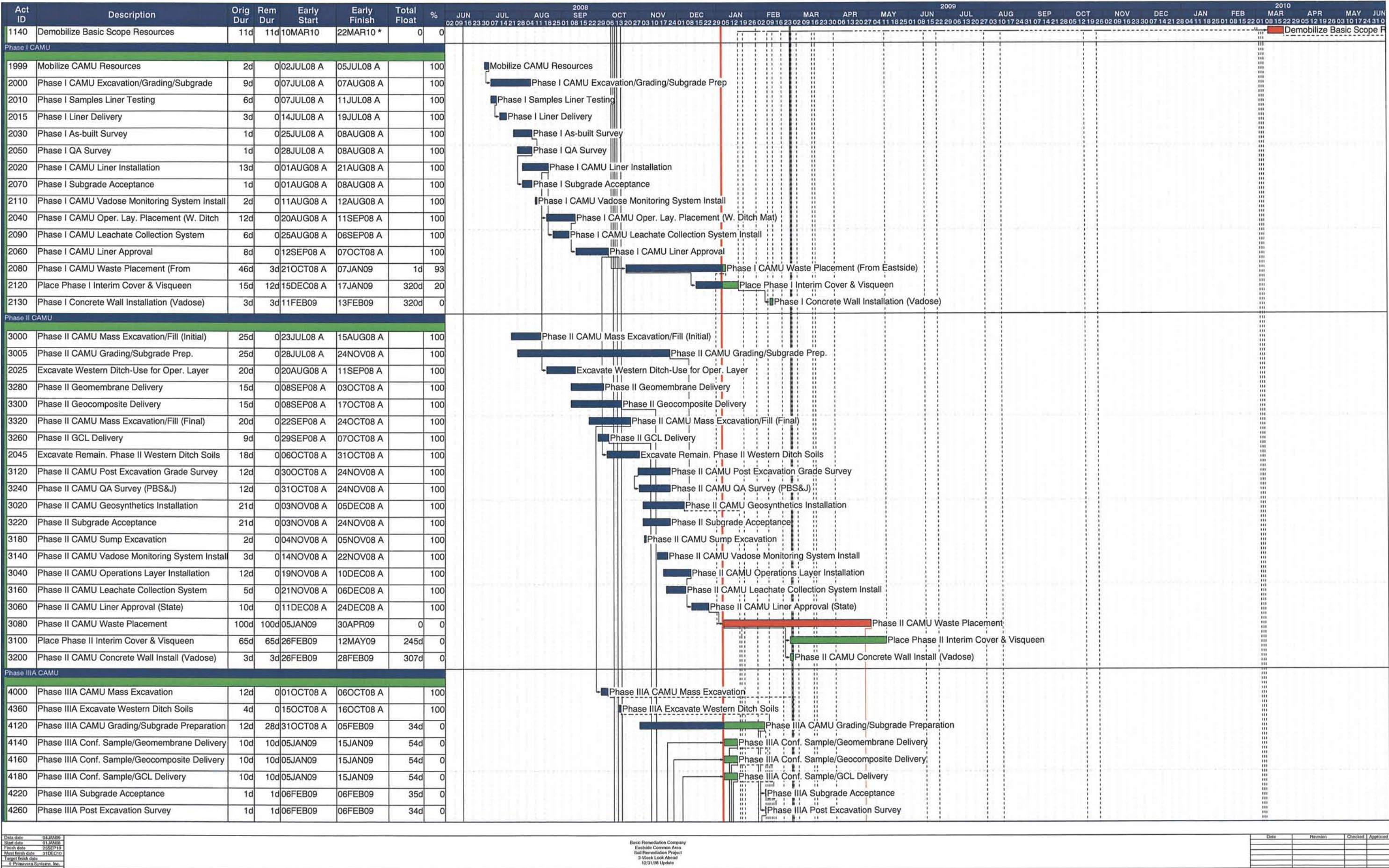
BRC ENVIRONMENTAL CLEANUP

ID	Task Name	Duration	Start	Finish	Predecessors	Qtr 1, 200	
						Jan	Feb
419	Set #27 2004 Eastside Hydro Investigation (Revised) - FINAL	1 day	Thu 8/31/06	Thu 8/31/06			
420	Set #32 Alpha Ditch Investigation - FINAL	1 day	Tue 9/26/06	Tue 9/26/06			
421	Set #33 Spray Wheel Salt Investigation - FINAL	1 day	Tue 9/26/06	Tue 9/26/06			
422	Set #37 First Quarterly GW Monitoring - FINAL	1 day	Tue 1/2/07	Tue 1/2/07			
423	Set #38 Second Quarterly GW Monitoring - FINAL	1 day	Tue 1/2/07	Tue 1/2/07			
424	Set #39 Waste Sampling - FINAL	1 day	Fri 11/3/06	Fri 11/3/06			
425							
426							
427	Other Current/Old Data Sets	456 days	Mon 4/3/06	Mon 7/2/07			
428	Set #1 Environmental Conditions Investigation	17 days	Tue 10/10/06	Thu 10/26/06			
429	b) Exclusion Areas - FINAL	1 day	Tue 10/10/06	Tue 10/10/06			
430	c) Parcel 5/6 confirmation sampling - FINAL	1 day	Thu 10/26/06	Thu 10/26/06			
431	Set #2 Warm Springs Rd Investigation - FINAL	1 day	Wed 10/25/06	Wed 10/25/06			
432	Set #5 Pittman Lateral GW Monitoring	10 days	Wed 11/29/06	Fri 12/8/06			
433	a) Initial Monitoring Event - FINAL	1 day	Wed 11/29/06	Wed 11/29/06			
434	b) Follow-Up Monitoring Event - FINAL	1 day	Fri 12/8/06	Fri 12/8/06			
435	Set #17 Conveyer Alignment Investigation - FINAL	1 day	Thu 11/2/06	Thu 11/2/06			
436	Set #24 Environ Background Investigation (By NDEP) - FINAL	1 day	Mon 5/1/06	Mon 5/1/06			
437	Set #31 TRECO Investigation - FINAL	1 day	Mon 4/3/06	Mon 4/3/06			
438	Set #34 BRC/TIMET Shallow Soil Background Investigation - FINAL	1 day	Mon 7/2/07	Mon 7/2/07			
439	Set #40 OffSite Dust Sampling - FINAL	1 day	Mon 11/20/06	Mon 11/20/06			
440							
441							
442	New Data Sets (Others, as generated)	874 days	Mon 1/8/07	Sat 5/30/09			
443	Set #41 Slit Trench Step-Out Sampling - FINAL	1 day	Mon 1/8/07	Mon 1/8/07			
444	Set #42 Third Quarterly GW Monitoring - FINAL	1 day	Wed 4/25/07	Wed 4/25/07			
445	Set #43 Parcel 4A-4B - FINAL	1 day	Tue 8/21/07	Tue 8/21/07			
446	Set #44 Fourth Quarterly GW Monitoring - FINAL	1 day	Tue 7/10/07	Tue 7/10/07			
447	Set #45 Orphan and Accumulated Small Data Sets - FINAL	1 day	Mon 10/22/07	Mon 10/22/07			
448	Set #46 North-East Area Well Boring Soils - FINAL	1 day	Thu 12/6/07	Thu 12/6/07			
449	Set #47 Upgradient Qa GW and Soils Along Borings - FINAL	1 day	Fri 2/22/08	Fri 2/22/08			
450	Set #45e Suppl. 4A/4B - FINAL	1 day	Fri 6/6/08	Fri 6/6/08			
451	Set #34b Suppl. Shallow Background Set - FINAL	1 day	Mon 6/9/08	Mon 6/9/08			
452	Set #34c Deep Background Soils Set - FINAL	1 day	Wed 6/25/08	Wed 6/25/08			
453	Set #48 CAMU 2007 GW - FINAL	1 day	Mon 3/24/08	Mon 3/24/08			
454	Set #49 Eastside Deep Wells Soils - FINAL	1 day	Mon 9/8/08	Mon 9/8/08			
455	Set #50 Sewer Line Investigations - Horizontal - FINAL	1 day	Wed 10/1/08	Wed 10/1/08			
456	Set #50a Sewer Line Rescrape - FINAL	1 day	Thu 1/8/09	Thu 1/8/09			

BRC ENVIRONMENTAL CLEANUP

ID	Task Name	Duration	Start	Finish	Predecessors	Qtr 1, 200	
						Jan	Feb
457	Set #51 Fifth Quarterly Eastside GW Monitoring - FINAL	1 day	Sat 11/1/08	Sat 11/1/08			
458	Set #52 Mohawk Confirmation - FINAL	1 day	Thu 10/23/08	Thu 10/23/08			
459	Set #52a Mohawk Rescrape Samples - To NDEP	1 day	Tue 2/24/09	Tue 2/24/09	187		
460	Set #53 Southern RIBs - To NDEP	1 day	Thu 4/30/09	Thu 4/30/09	217		
461	Set #54 Western Hook - To NDEP	1 day	Sat 5/30/09	Sat 5/30/09	202		
462	Set #55a CAMU Baseline GW Monitoring Q1 - To NDEP	1 day	Wed 1/21/09	Wed 1/21/09	315		





[illegible]

