

# Log of Boring No. BRC-SB-11-B

## BMI Site - Hydrogeologic Characterization

### Henderson, Nevada



**Drilling Method:** Rotary Sonic  
**Drilling Equipment:** Rotosonic/Rotary Sonic  
**Drilling Contractor:** Prosonic Corporation  
**Driller:** Gerald Sealey

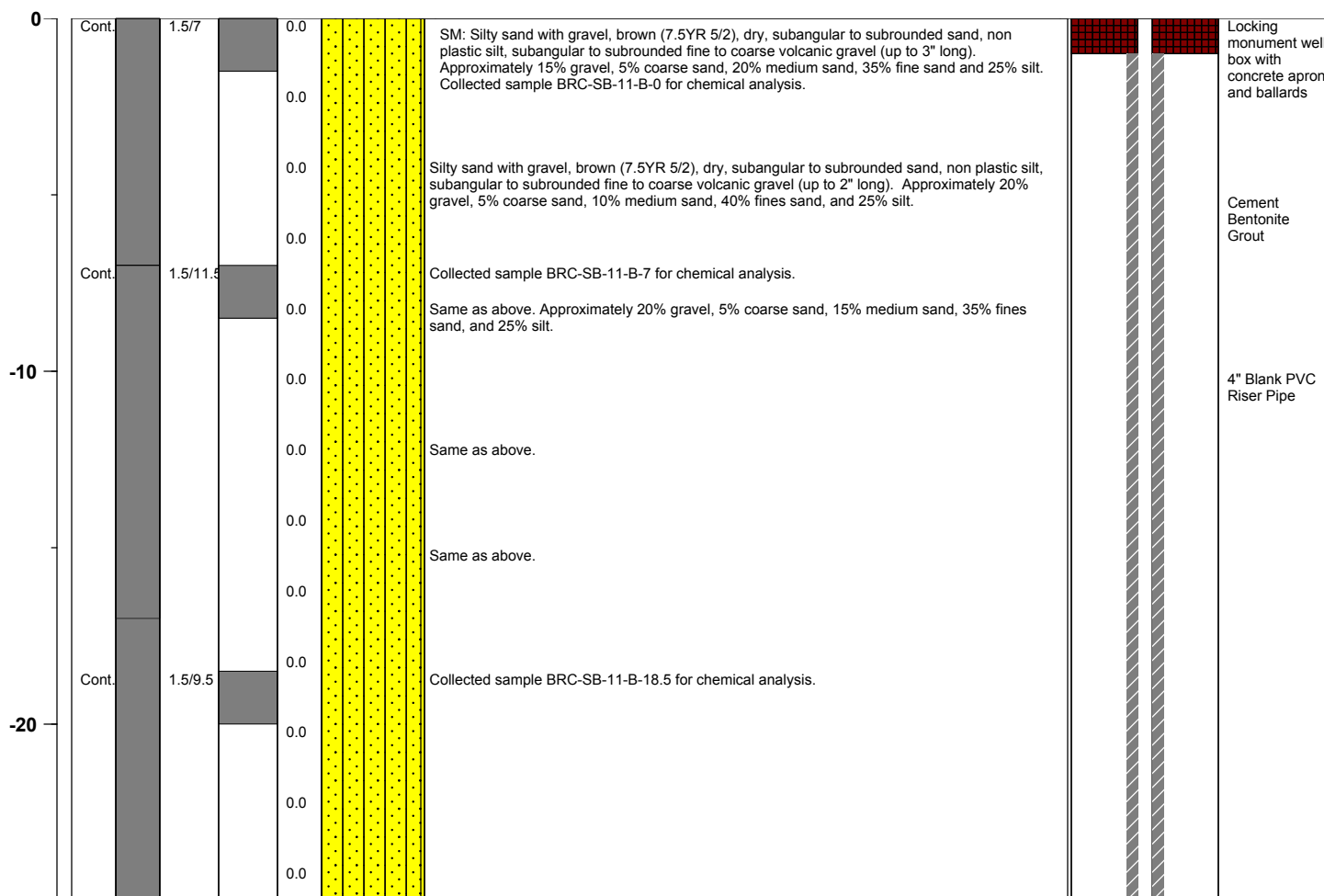
**Borehole Total Depth:** 287 ft bgs  
**Borehole Diameter:** 8.5 in  
**Boring Location:** Location 11 (Well ID: MCF-11)  
**Depth to Water (ft. bgs):** 24 ft bgs

**Sample Type:** Split Spoon  
**Sample Interval:** Continuous

**Logged By:** Adam Norris  
**Date Started:** 6/18/04  
**Date Completed:** 6/29/04

Monitoring Well Construction			
<b>Type of Surface Seal:</b>	Bentonite Grout	<b>Screen Slot Size:</b>	0.010 in
<b>Blank Casing Type/Size:</b>	4" Sch 80 PVC	<b>Top of Screen (ft. bgs):</b>	93.5
<b>Screen Type/Size:</b>	4" Sch 80 PVC	<b>Bottom of Screen (ft. bgs):</b>	103.5 ft bgs
<b>Transition Sand Type:</b>	N/A	<b>Type of Sand Pack:</b>	#10 x 20

Depth Elevation (MSLD)	Sample Type	Sample Interval	Sample Recovery (feet)	Sample Retained for Analysis	PID	Lithology	Soil Description	Well Construction
---------------------------	-------------	-----------------	---------------------------	---------------------------------	-----	-----------	------------------	-------------------



**Project No.** 3850360

**Log of Boring:** BRC-SB-11-B





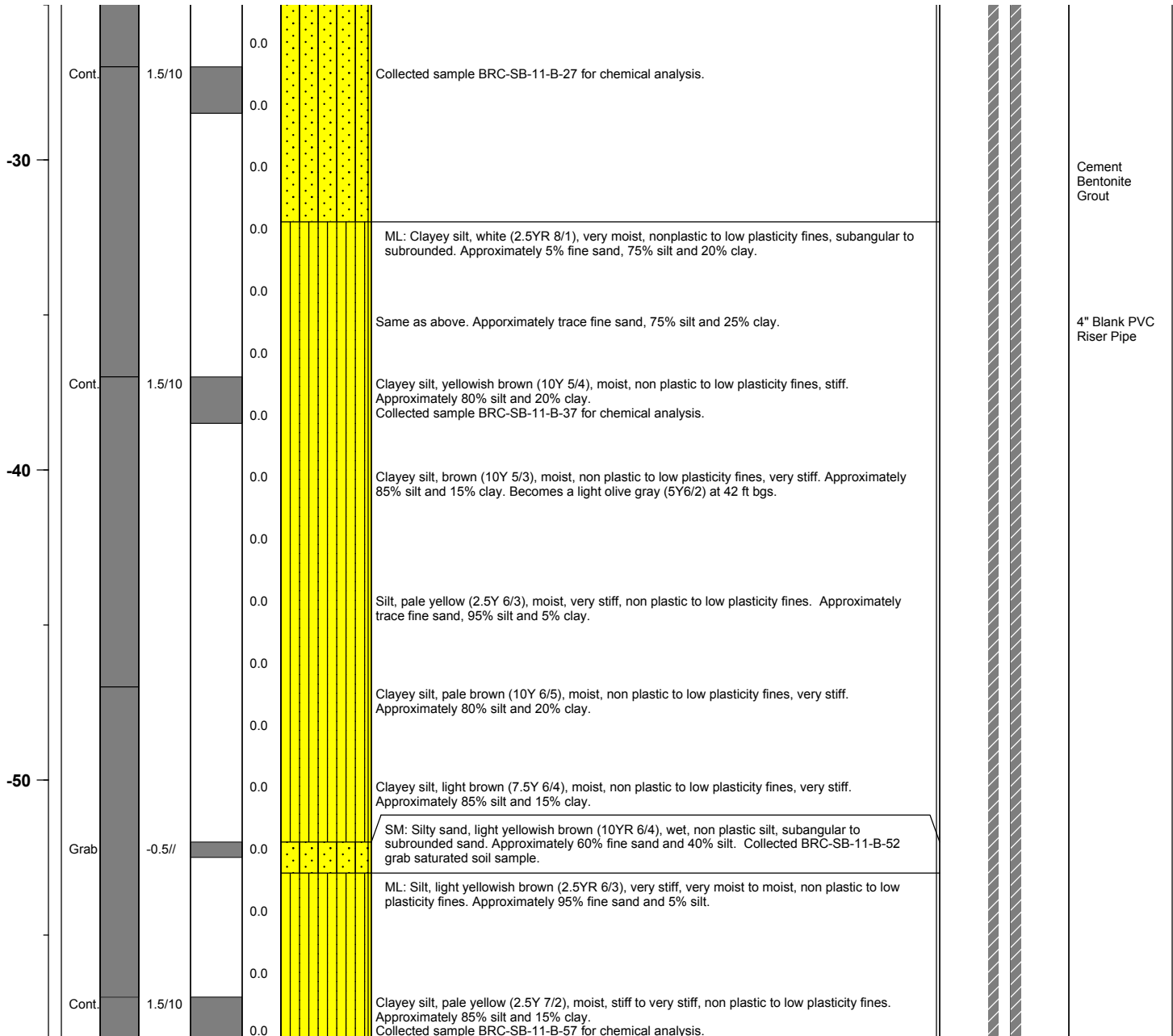
# BMI Site - Hydrogeologic Characterization

Henderson, Nevada



Log of Boring No. BRC-SB-11-B

Depth Elevation (MSLD)	Sample Type	Sample Interval	Sample Recovery (feet)	Sample Retained for Analysis	PID	Lithology	Soil Description	Well Construction
---------------------------	-------------	-----------------	---------------------------	---------------------------------	-----	-----------	------------------	-------------------



Project No. 3850360

Log of Boring: BRC-SB-11-B





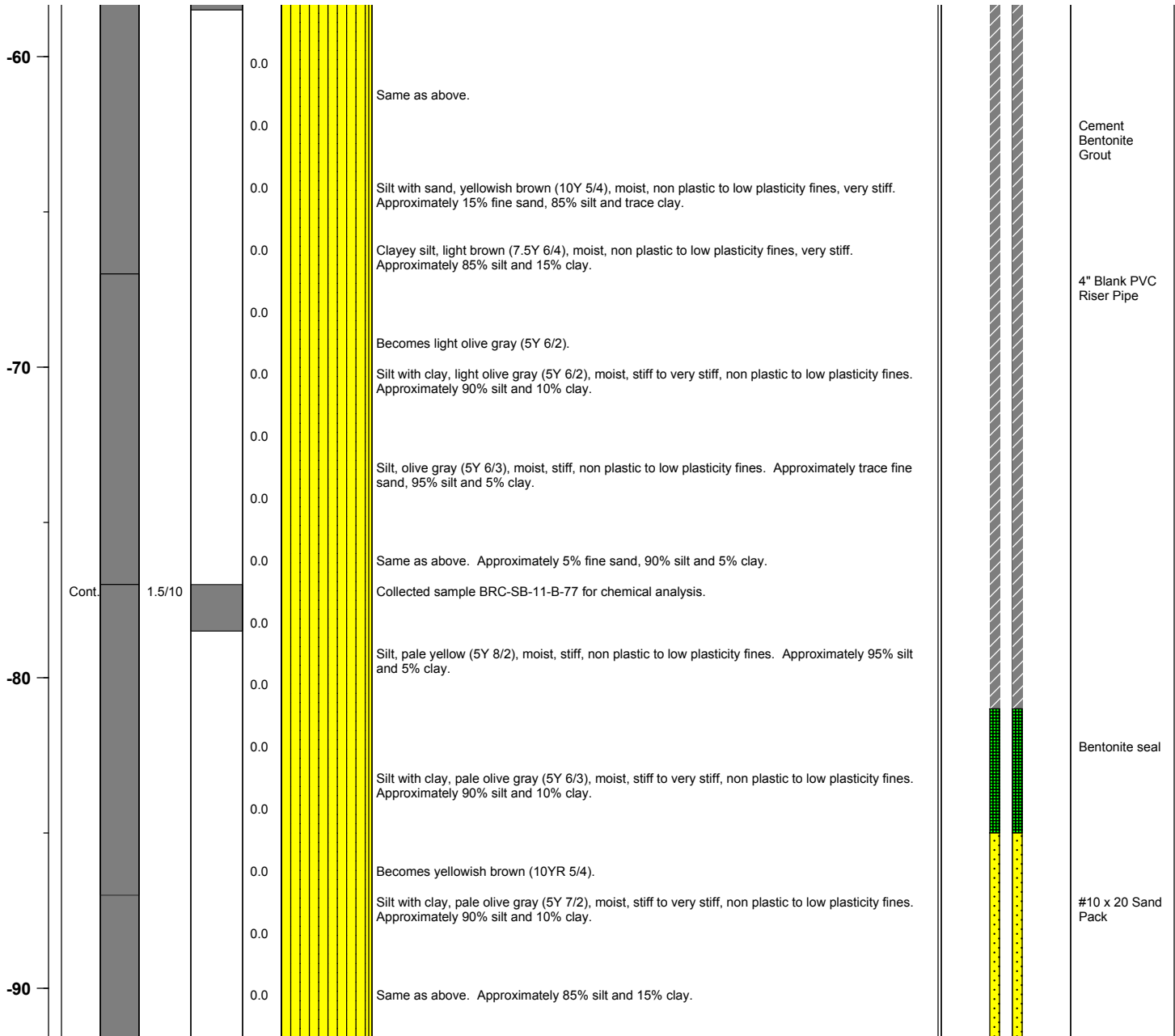
# BMI Site - Hydrogeologic Characterization

Henderson, Nevada



Log of Boring No. BRC-SB-11-B

Depth Elevation (MSLD)	Sample Type	Sample Interval	Sample Recovery (feet)	Sample Retained for Analysis	PID	Lithology	Soil Description	Well Construction
---------------------------	-------------	-----------------	---------------------------	---------------------------------	-----	-----------	------------------	-------------------



Project No. 3850360

Log of Boring: BRC-SB-11-B





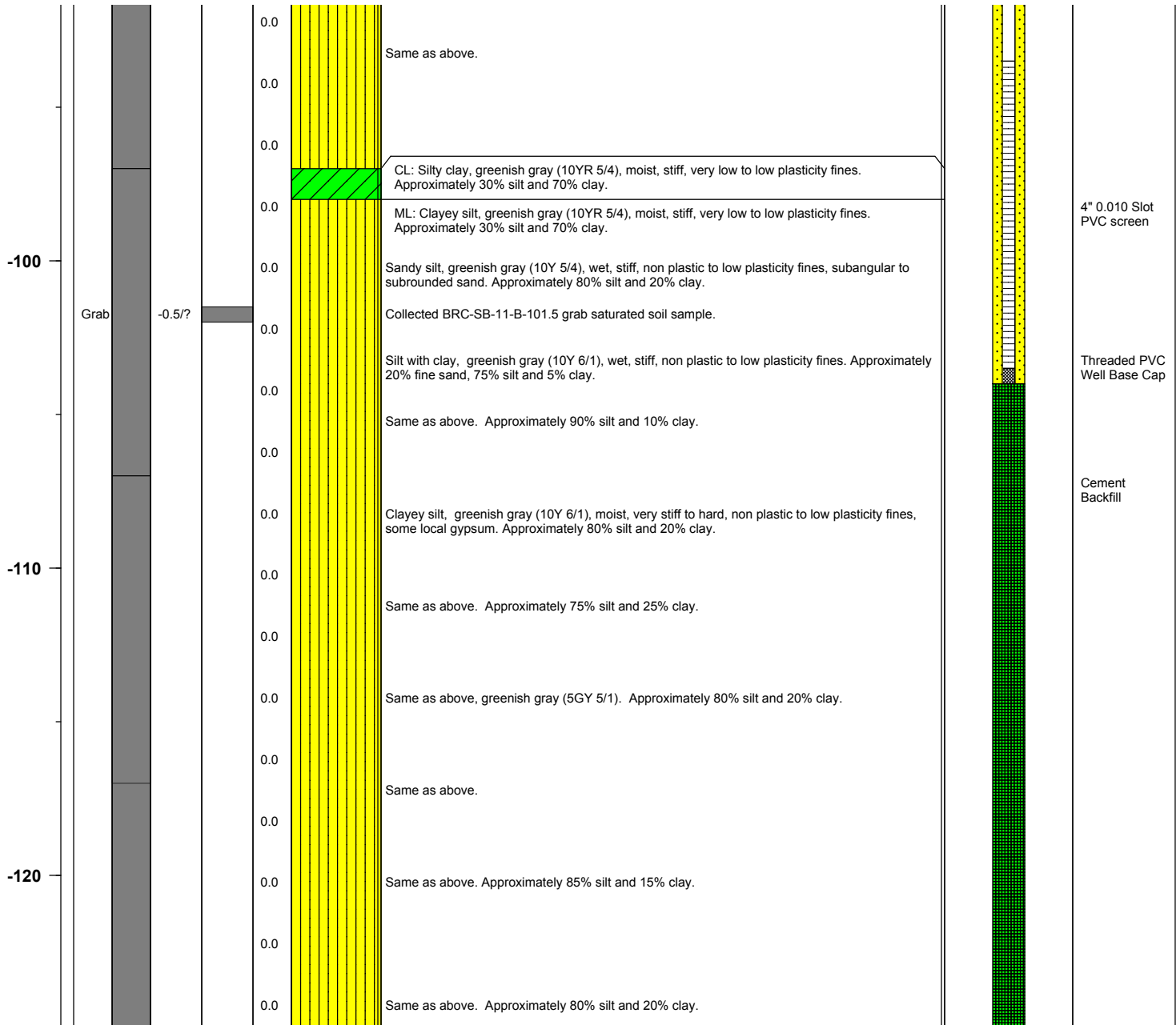
# BMI Site - Hydrogeologic Characterization

Henderson, Nevada



Log of Boring No. BRC-SB-11-B

Depth Elevation (MSLD)	Sample Type	Sample Interval	Sample Recovery (feet)	Sample Retained for Analysis	PID	Lithology	Soil Description	Well Construction
---------------------------	-------------	-----------------	---------------------------	---------------------------------	-----	-----------	------------------	-------------------



Project No. 3850360

Log of Boring: BRC-SB-11-B





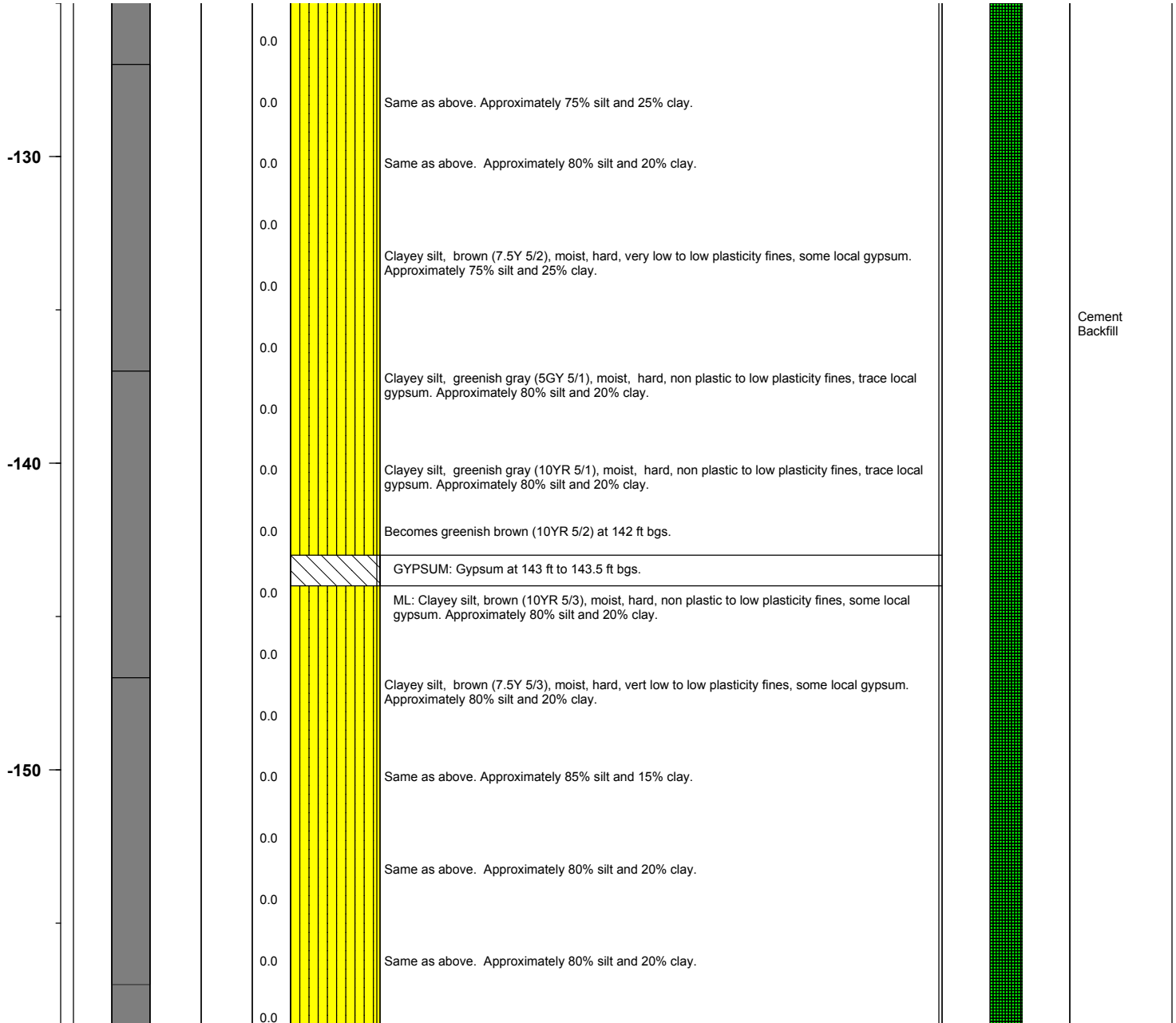
# BMI Site - Hydrogeologic Characterization

Henderson, Nevada



Log of Boring No. BRC-SB-11-B

Depth Elevation (MSLD)	Sample Type	Sample Interval	Sample Recovery (feet)	Sample Retained for Analysis	PID	Lithology	Soil Description	Well Construction
---------------------------	-------------	-----------------	---------------------------	---------------------------------	-----	-----------	------------------	-------------------



Project No. 3850360

Log of Boring: BRC-SB-11-B





# BMI Site - Hydrogeologic Characterization

Henderson, Nevada



Log of Boring No. BRC-SB-11-B

Depth Elevation (MSLD)	Sample Type	Sample Interval	Sample Recovery (feet)	Sample Retained for Analysis	PID	Lithology	Soil Description	Well Construction
---------------------------	-------------	-----------------	---------------------------	---------------------------------	-----	-----------	------------------	-------------------

-160					0.0		Clayey silt, grayish brown (10YR 5/2), moist, hard, non plastic to low plasticity fines, trace local gypsum. Approximately 80% silt and 20% clay.	
					0.0		Silt, brown (10YR 5/2), moist, very stiff, non plastic to low plasticity fines, trace local gypsum, subangular to subrounded sand. Approximately 80% silt and 20% clay.	
					0.0			
	Cont.	1.5/10			0.0		Clayey silt, brown (10YR 5/3), moist, very stiff, non plastic to low plasticity fines. Approximately trace medium sand, 10% fine sand, 85% silt and 5% clay. Collected sample BRC-SB-11-B-167 for chemical analysis.	
-170					0.0		Same as above. Approximately 5% fine sand, 80% silt and 15% clay.	
					0.0		Clayey silt, yellowish brown (10YR 5/4), moist, very stiff to hard, non plastic to low plasticity fines. Approximately 80% silt and 20% clay.	
					0.0		Same as above, greenish gray (10Y 6/1). Approximately 80% silt and 20% clay.	
-180					0.0		Clayey silt, brown (10YR 5/3), moist, very stiff, non plastic to low plasticity fines, trace local gypsum. Approximately 80% silt and 20% clay.	
					0.0		Silt with clay, brown (10YR 5/3), moist, hard, non plastic to low plasticity fines, some local gypsum. Approximately 90% silt and 10% clay.	
					0.0		Clayey silt, brown (7.5YR 5/3), moist, hard, very low to low plasticity fines, some local gypsum. Approximately 75% silt and 25% clay.	
-190					0.0		Same as above. Approximately 80% silt and 20% clay.	

Project No. 3850360

Log of Boring: BRC-SB-11-B



Page 6 of 9



# BMI Site - Hydrogeologic Characterization

Henderson, Nevada



Log of Boring No. BRC-SB-11-B

Depth Elevation (MSLD)	Sample Type	Sample Interval	Sample Recovery (feet)	Sample Retained for Analysis	PID	Lithology	Soil Description	Well Construction
---------------------------	-------------	-----------------	---------------------------	---------------------------------	-----	-----------	------------------	-------------------

							Same as above.	
							Wet at 194.5 ft to 196.5 ft bgs. Sandy silt, light brownish gray (10YR 6/1), wet, non plastic silt, subangular to subrounded sand. Approximately 30% fine sand and 70% silt. Collected BRC-SB-11-B-195 grab saturated soil sample.	
	Grab	-0.5/2					Clayey silt, greenish gray (10YR 6/1), moist, hard, non plastic to low plasticity fines. Approximately 80% silt and 20% clay.	Cement Backfill
							Clayey silt, brown (10YR 5/3), moist, hard, very low to low plasticity fines, trace local gypsum. Approximately 70% silt and 30% clay.	
-200							Same as above. Approximately 75% silt and 25% clay.	
							Silt with clay, brown (10YR 5/3), moist, hard, non plastic to low plasticity fines, some local gypsum. Approximately 90% silt and 10% clay.	
							Clayey silt, brown (7.5YR 5/3), moist, hard, very low to low plasticity fines, some local gypsum. Approximately 80% silt and 20% clay.	
-210							Silt with clay, brown (10YR 5/3), moist, hard, non plastic to low plasticity fines, some local gypsum. Approximately 90% silt and 10% clay.	
							Clayey silt, brown (7.5YR 5/3), moist, hard, very low to low plasticity fines, some local gypsum. Approximately 80% silt and 20% clay.	
							Same as above.	
							Clayey silt, brown (10YR 5/3), moist, hard, very low to low plasticity fines, trace local gypsum. Approximately 80% silt and 20% clay.	
-220							Same as above.	
							Same as above.	

Project No. 3850360

Log of Boring: BRC-SB-11-B





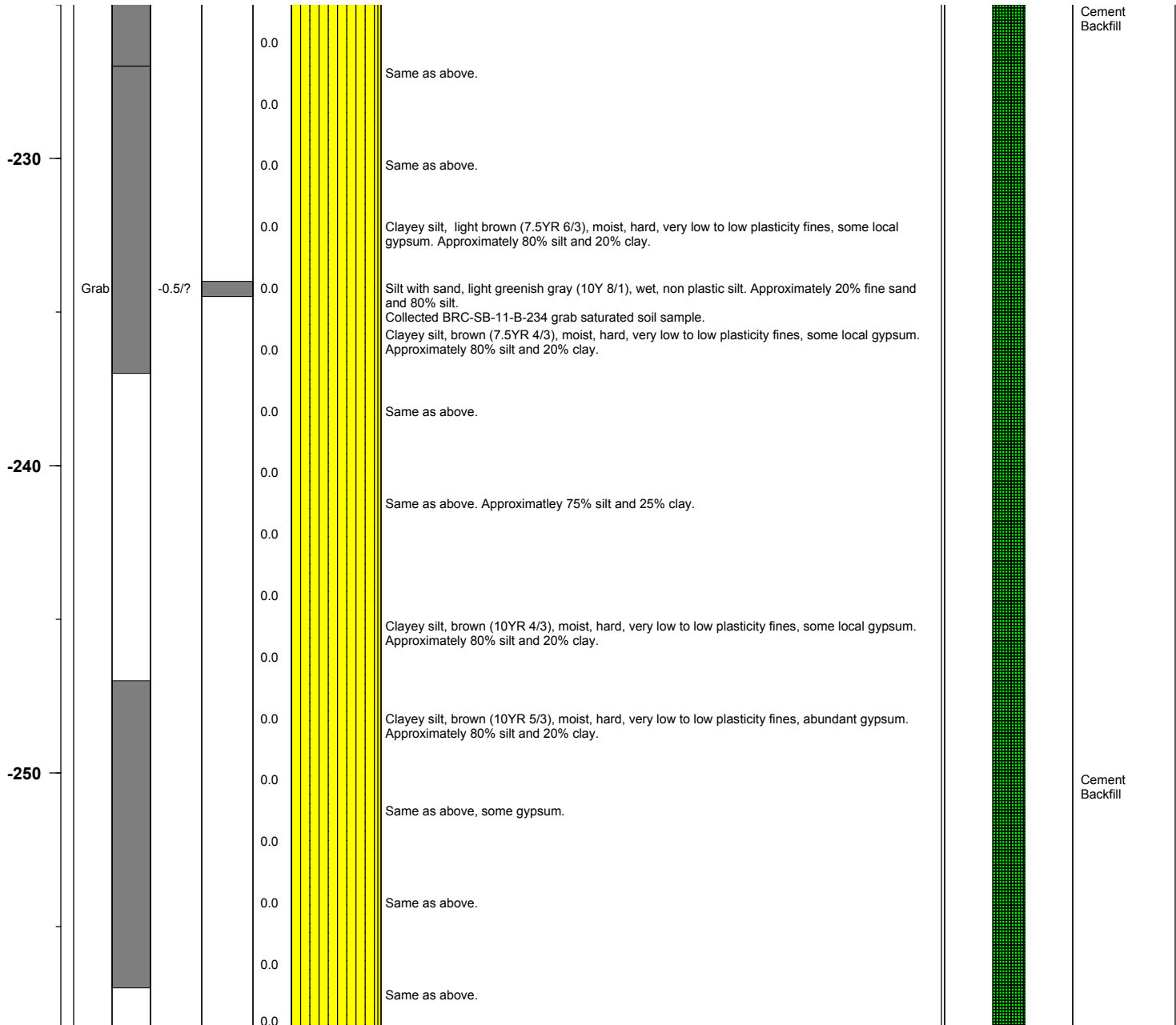
# BMI Site - Hydrogeologic Characterization

Henderson, Nevada



Log of Boring No. BRC-SB-11-B

Depth Elevation (MSLD)	Sample Type	Sample Interval	Sample Recovery (feet)	Sample Retained for Analysis	PID	Lithology	Soil Description	Well Construction
---------------------------	-------------	-----------------	---------------------------	---------------------------------	-----	-----------	------------------	-------------------



Project No. 3850360

Log of Boring: BRC-SB-11-B





# BMI Site - Hydrogeologic Characterization

Henderson, Nevada



Log of Boring No. BRC-SB-11-B

Depth Elevation (MSLD)	Sample Type	Sample Interval	Sample Recovery (feet)	Sample Retained for Analysis	PID	Lithology	Soil Description	Well Construction
---------------------------	-------------	-----------------	---------------------------	---------------------------------	-----	-----------	------------------	-------------------

-260					0.0		Clayey silt, brown (7.5YR 5/4), moist, hard, very low to low plasticity fines, some gypsum. Approximately 80% silt and 20% clay.	
					0.0			
					0.0		Same as above.	
					0.0			
	Cont.	1.5/10			0.0		Clayey silt, brown (10YR 5/3), moist, hard, very low to low plasticity fines, abundant gypsum. Approximately 80% silt and 20% clay. Collected sample BRC-SB-11-B-267 for chemical analysis.	
-270					0.0		Same as above.	
					0.0			
					0.0		Same as above. Approximately 75% silt and 25% clay.	
					0.0			
					0.0		Clayey silt, yellowish brown (10YR 5/4), moist, hard, very low to low plasticity fines, some local gypsum. Approximately 80% silt and 20% clay.	
-280					0.0			
					0.0		Clayey silt, brown (10YR 5/3), moist, hard, very low to low plasticity fines, some local gypsum. Approximately 80% silt and 20% clay.	
					0.0			
					0.0		Clayey silt, brown (7.5YR 5/4), moist, hard, very low to low plasticity fines, some local gypsum. Approximately 80% silt and 20% clay.	
					0.0			

Project No. 3850360

Log of Boring: BRC-SB-11-B

