

Log of Boring No. BRC-SB-26-A

BMI Site - Hydrogeologic Characterization

Henderson, Nevada



Drilling Method: Hollow Stem Auger
Drilling Equipment: CME-95/Hollow Stem Auger
Drilling Contractor: Water Development Corporation
Driller: George Guzman

Borehole Total Depth: 85 ft bgs
Borehole Diameter: 9.25 in
Boring Location: Location 26
Depth to Water (ft. bgs): 41ft bgs

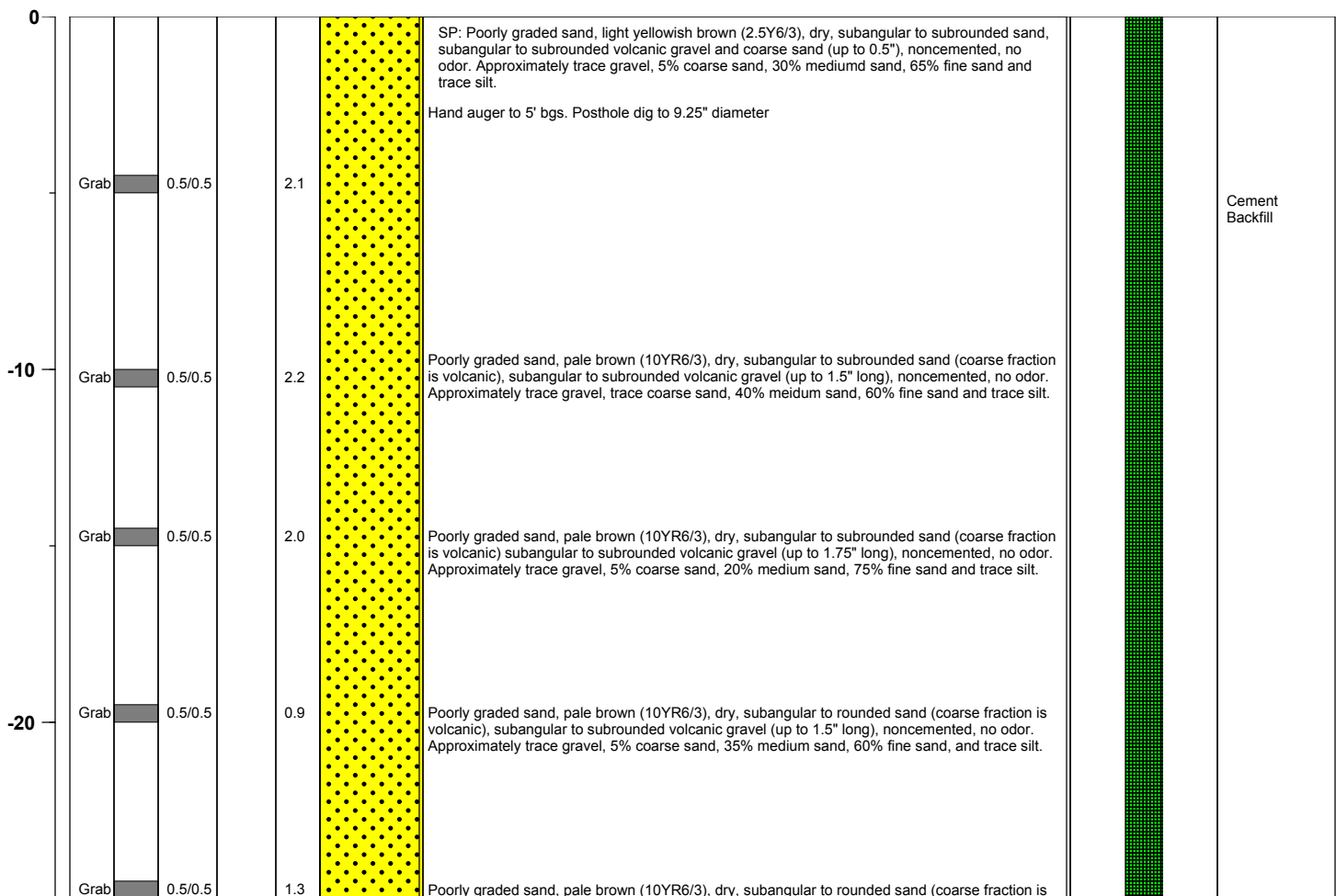
Sample Type: Grab/ S.S.
Sample Interval: Varied

Logged By: Jennifer Wiley
Date Started: 4/7/04
Date Completed: 4/7/04

Monitoring Well Construction

Type of Surface Seal:	N/A	Screen Slot Size:	N/A
Blank Casing Type/Size:	N/A	Top of Screen (ft. bgs):	N/A
Screen Type/Size:	N/A	Bottom of Screen (ft. bgs):	N/A
Transition Sand Type:	N/A	Type of Sand Pack:	N/A

Depth Elevation (MSLD)	Sample Type	Sample Interval	Sample Recovery (feet)	Sample Retained for Analysis	PID	Lithology	Soil Description	Well Construction
---------------------------	-------------	-----------------	---------------------------	---------------------------------	-----	-----------	------------------	-------------------



Project No. 3850360

Log of Boring: BRC-SB-26-A



BMI Site - Hydrogeologic Characterization

Henderson, Nevada



Log of Boring No. BRC-SB-26-A

Depth Elevation (MSLD)	Sample Type	Sample Interval	Sample Recovery (feet)	Sample Retained for Analysis	PID	Lithology	Soil Description	Well Construction
							volcanic), subangular to subrounded volcanic gravel (up to 1.5" long), noncemented, no odor. Approximately 5% gravel, 5% coarse sand, 45% medium sand, 45% fine sand and trace silt.	
-30	Grab	0.5/0.5	0.5/0.5		7.3		Poorly graded sand, pale brown (10YR6/3), dry, subangular to subrounded sand (coarse fraction volcanic and metasedimentary), subangular to subrounded volcanic & metasedimentary gravel (up to 1" long), noncemented, no odor. Approximately trace gravel, 5% coarse sand, 50% medium sand, 45% fine sand and trace silt.	Cement Backfill
	Grab	0.5/0.5	0.5/0.5		9.0		Poorly graded sand, yellowish brown (10YR5/4), dry, subangular to rounded sand (coarse fraction volcanic), subangular to rounded volcanic & metasedimentary gravel (up to 1" long), noncemented, no odor. Approximately 5% gravel, 5% coarse sand, 45% medium sand, 45% fine sand and trace silt.	
-40	Grab	0.5/0.5	0.5/0.5		5.5		Poorly graded sand, yellowish brown (10YR5/4), dry, subangular to rounded sand (coarse fraction volcanic), subangular to subrounded volcanic & metasedimentary gravel (up to 1" long), noncemented, no odor. Approximately 5% gravel, 10% coarse sand, 40% medium sand, 45% fine sand and trace silt.	
	Grab	0.5/0.5	0.5/0.5		7.9		Poorly graded sand, yellowish brown (10YR5/4), moist to wet (no free water), subangular to subrounded sand (volcanic and metasedimentary), noncemented, no odor. Approximately 5% coarse sand, 80% medium sand, 10% fine sand and 5% clay.	
-50	Grab	0.5/0.5	0.5/0.5		6.7		SP-SC: Poorly graded sand with clay, yellowish brown (10YR5/4), moist to wet (no free water), subangular to subrounded sand (volcanic), noncemented, no odor. Approximately 5% coarse sand, 75% medium sand, 10% fine sand and 10% clay.	
	Split Spoon	1/2	1/2		NA		Poorly graded sand with clay, brown (10YR5/3), moist, subangular to subrounded volcanic sand and gravel, weakly indurated in areas, no odor. Approximately trace gravel, trace coarse sand, 30% medium sand, 60% fine sand and 10% clay. Sluff (Muddy cuttings - no representative soil samples)	

Project No. 3850360

Log of Boring: BRC-SB-26-A



Log of Boring No. BRC-SB-26-A

Depth Elevation (MSLD)	Sample Type	Sample Interval	Sample Recovery (feet)	Sample Retained for Analysis	PID	Lithology	Soil Description	Well Construction
---------------------------	-------------	-----------------	---------------------------	---------------------------------	-----	-----------	------------------	-------------------

