

Log of Boring No. BRC-SB-04-B

BMI Site - Hydrogeologic Characterization

Henderson, Nevada



Drilling Method: Rotary Sonic
Drilling Equipment: Rotary Sonic Rig #38
Drilling Contractor: Prosonic Corporation
Driller: Gerald Sealey

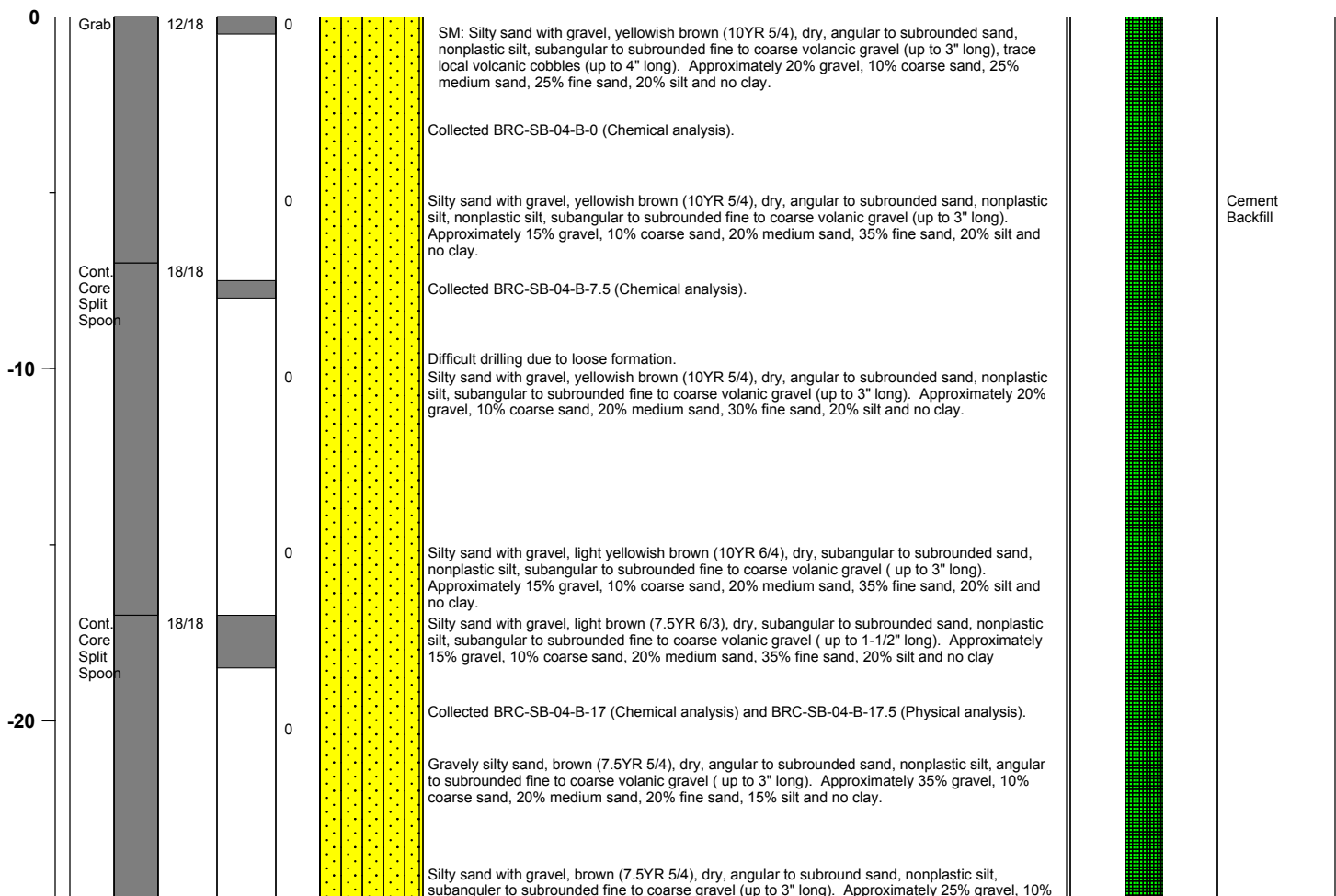
Borehole Total Depth: 400 ft bgs
Borehole Diameter: 9.5 in/8.5 in
Boring Location: Location 4
Depth to Water (ft. bgs): NM

Sample Type: Cont. Core/S.S.
Sample Interval: Various

Logged By: Adam Norris
Date Started: 4/25/04
Date Completed: 5/07/04

Monitoring Well Construction			
Type of Surface Seal:	Bentonite-Cement	Screen Slot Size:	N/A
Blank Casing Type/Size:	NA	Top of Screen (ft. bgs):	NA
Screen Type/Size:	NA	Bottom of Screen (ft. bgs):	NA
Transition Sand Type:	NA	Type of Sand Pack:	NA

Depth Elevation (MSLD)	Sample Type	Sample Interval	Sample Recovery (feet)	Sample Retained for Analysis	PID	Lithology	Soil Description	Well Construction
---------------------------	-------------	-----------------	---------------------------	---------------------------------	-----	-----------	------------------	-------------------



Project No. 3850360

Log of Boring: BRC-SB-04-B



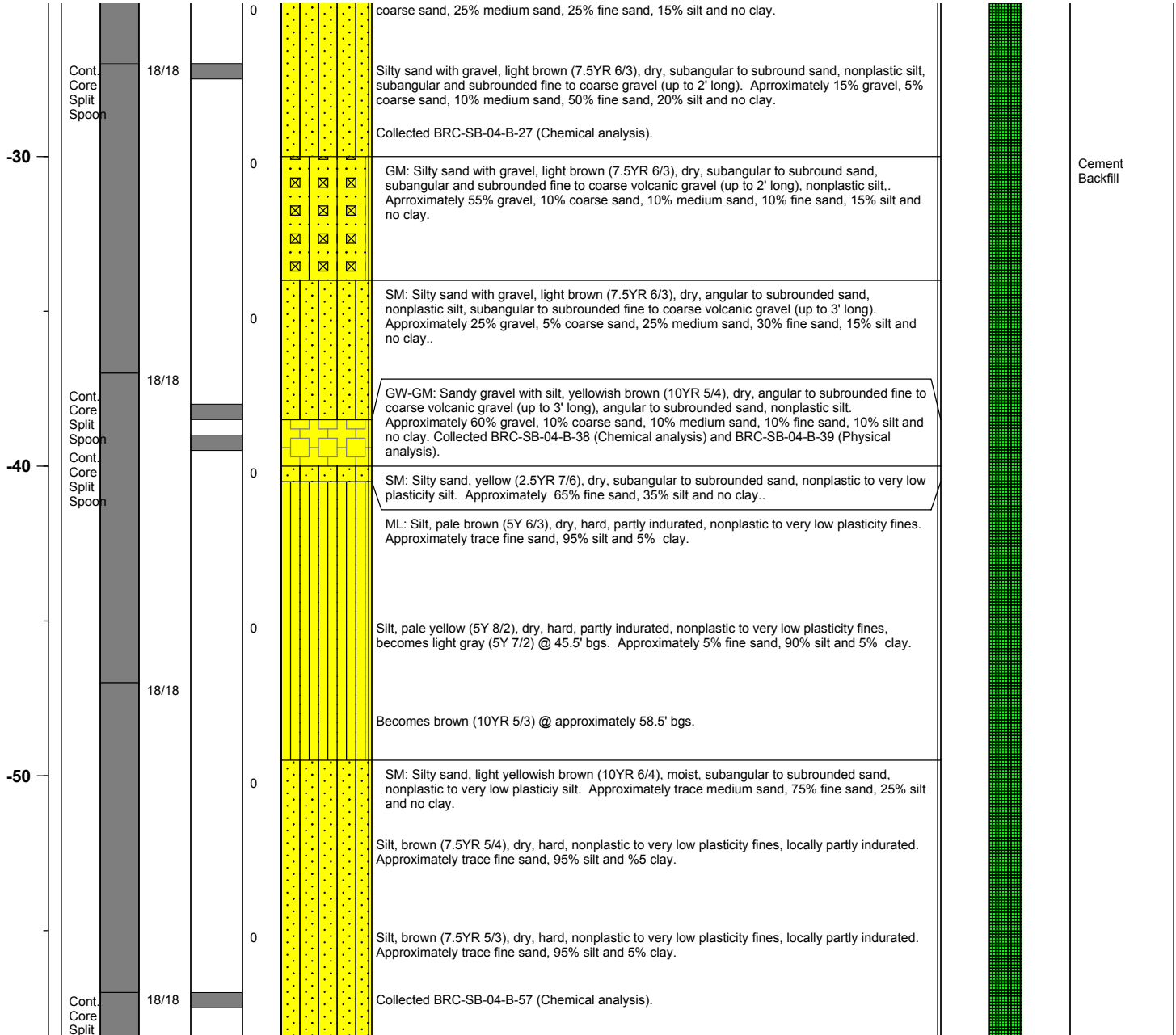
BMI Site - Hydrogeologic Characterization

Henderson, Nevada



Log of Boring No. BRC-SB-04-B

Depth Elevation (MSLD)	Sample Type	Sample Interval	Sample Recovery (feet)	Sample Retained for Analysis	PID	Lithology	Soil Description	Well Construction
---------------------------	-------------	-----------------	---------------------------	---------------------------------	-----	-----------	------------------	-------------------



Project No. 3850360

Log of Boring: BRC-SB-04-B



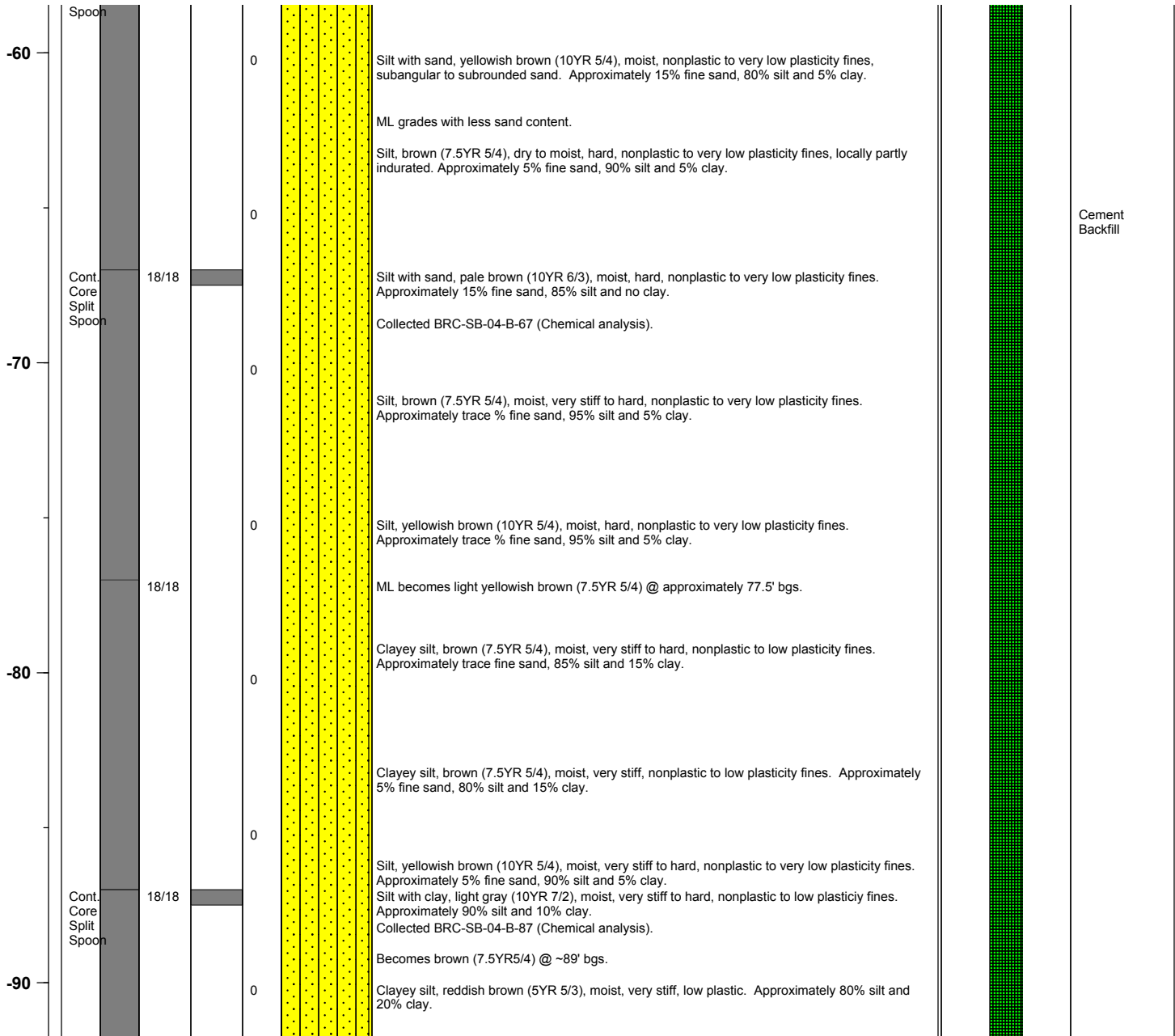
BMI Site - Hydrogeologic Characterization

Henderson, Nevada



Log of Boring No. BRC-SB-04-B

Depth Elevation (MSLD)	Sample Type	Sample Interval	Sample Recovery (feet)	Sample Retained for Analysis	PID	Lithology	Soil Description	Well Construction
---------------------------	-------------	-----------------	---------------------------	---------------------------------	-----	-----------	------------------	-------------------



Project No. 3850360

Log of Boring: BRC-SB-04-B



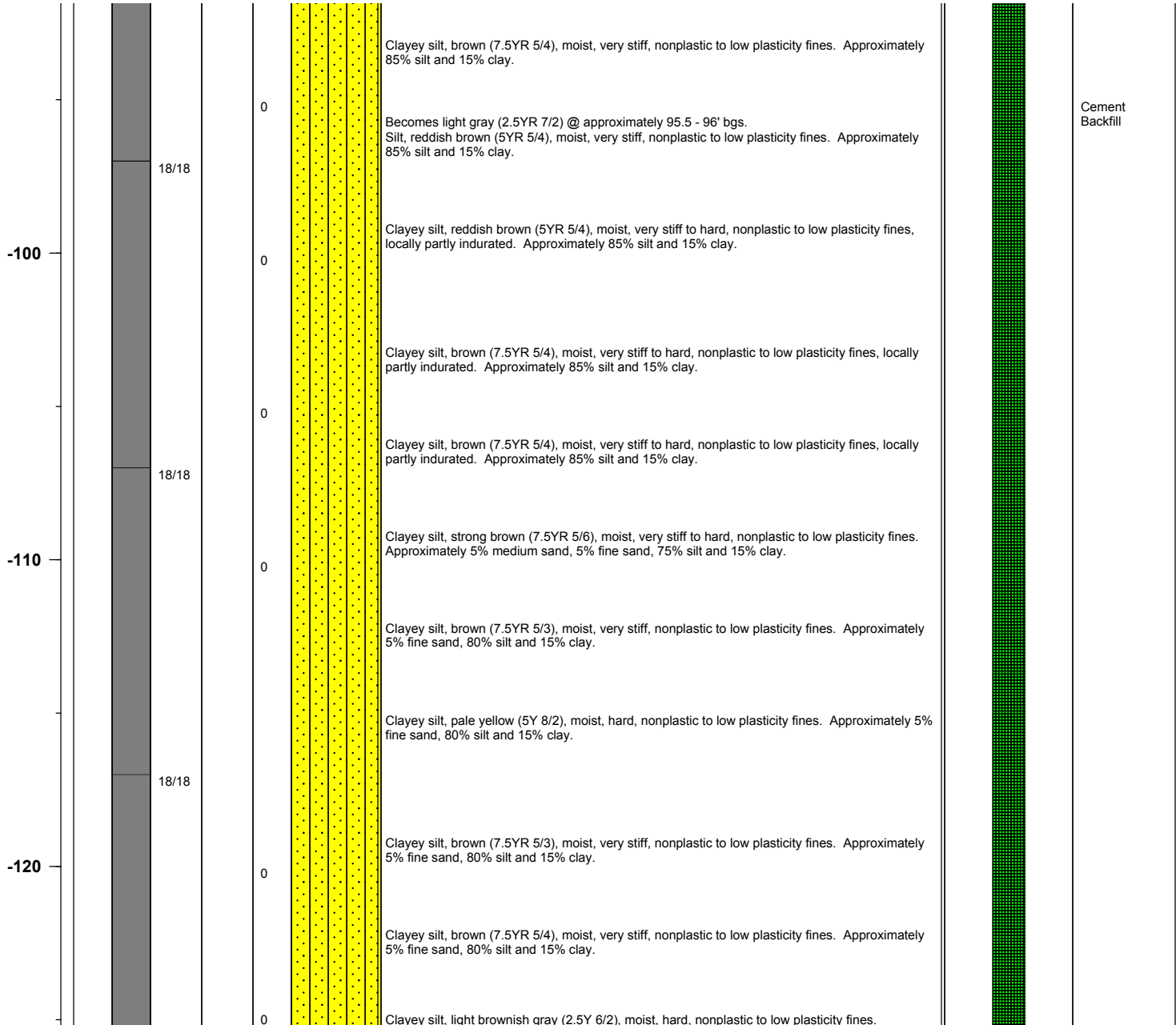
BMI Site - Hydrogeologic Characterization

Henderson, Nevada



Log of Boring No. BRC-SB-04-B

Depth Elevation (MSLD)	Sample Type	Sample Interval	Sample Recovery (feet)	Sample Retained for Analysis	PID	Lithology	Soil Description	Well Construction
---------------------------	-------------	-----------------	---------------------------	---------------------------------	-----	-----------	------------------	-------------------



Project No. 3850360

Log of Boring: BRC-SB-04-B



BMI Site - Hydrogeologic Characterization

Henderson, Nevada



Log of Boring No. BRC-SB-04-B

Depth Elevation (MSLD)	Sample Type	Sample Interval	Sample Recovery (feet)	Sample Retained for Analysis	PID	Lithology	Soil Description	Well Construction
---------------------------	-------------	-----------------	---------------------------	---------------------------------	-----	-----------	------------------	-------------------

-130		18/18			0		Approximately 5% fine sand, 80% silt and 15% clay.	
							Clayey silt, yellow brown (10YR 5/4), moist, very stiff to hard, nonplastic to low plasticity fines. Approximately 5% fine sand, 80% silt and 15% clay.	
							Clayey silt, light olive gray (5Y 6/2), moist, hard, nonplastic to low plasticity fines. Approximately 85% silt and 15% clay.	
							Clayey silt, greenish gray (10Y 6/1), moist, hard, nonplastic to low plasticity fines. Approximately trace fine sand, 85% silt and 15% clay.	
							Some local gypsum content @ 135' to 136.6' bgs.	
-140		18/18			0		Clayey silt, light brownish gray (2.5Y 6/2), moist, very stiff to hard, nonplastic to low plasticity fines. Approximately trace % fine sand, 85% silt and 15% clay.	
							Trace local green mottling @ 139' bgs.	
							Clayey silt, brown (10YR 5/3), moist, hard, nonplastic to low plasticity fines. Approximately 85% silt and 15% clay.	
							Clayey silt, brown (10YR 5/3), moist, very stiff to hard, nonplastic to low plasticity fines. Approximately trace fine sand, 85% silt and 15% clay.	
-150		18/18			0		Clayey silt, light greenish gray, (10Y 7/1), moist, very stiff, nonplastic to low plasticity fines, trace local green mottlings. Approximately trace fine sand, 85% silt and 15% clay.	
							Clayey silt, brown, (10YR 5/3), moist, very stiff, nonplastic to low plasticity fines, trace local green mottlings. Approximately 85% silt and 15% clay.	
							Clayey silt, brown, (10YR 5/3), moist, hard, very low to low plasticity fines, locally partly indurated. Approximately 75% silt and 25% clay.	
		18/18						

Project No. 3850360

Log of Boring: BRC-SB-04-B



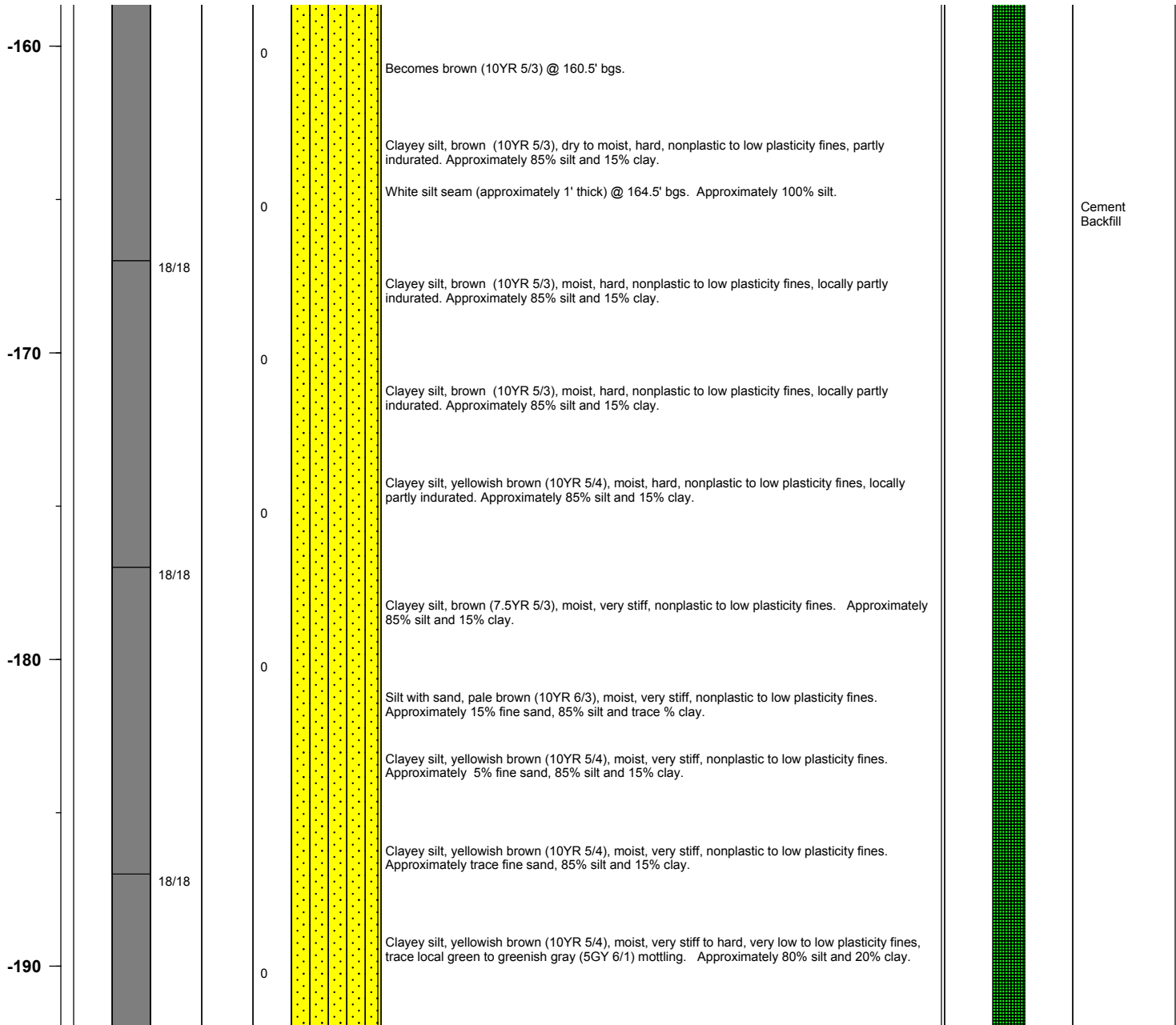
BMI Site - Hydrogeologic Characterization

Henderson, Nevada



Log of Boring No. BRC-SB-04-B

Depth Elevation (MSLD)	Sample Type	Sample Interval	Sample Recovery (feet)	Sample Retained for Analysis	PID	Lithology	Soil Description	Well Construction
---------------------------	-------------	-----------------	---------------------------	---------------------------------	-----	-----------	------------------	-------------------



Project No. 3850360

Log of Boring: BRC-SB-04-B



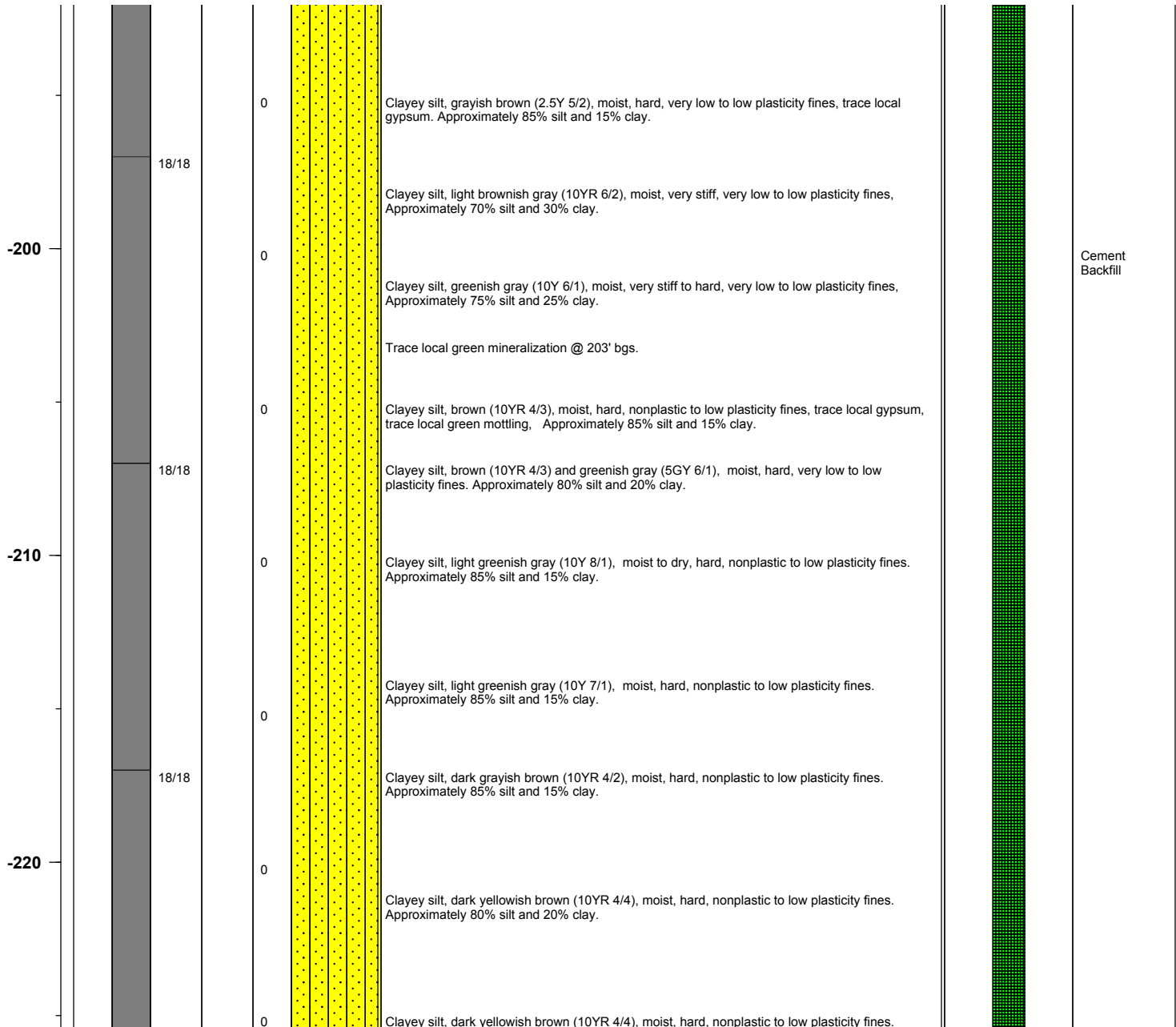
BMI Site - Hydrogeologic Characterization

Henderson, Nevada



Log of Boring No. BRC-SB-04-B

Depth Elevation (MSLD)	Sample Type	Sample Interval	Sample Recovery (feet)	Sample Retained for Analysis	PID	Lithology	Soil Description	Well Construction
---------------------------	-------------	-----------------	---------------------------	---------------------------------	-----	-----------	------------------	-------------------



Project No. 3850360

Log of Boring: BRC-SB-04-B



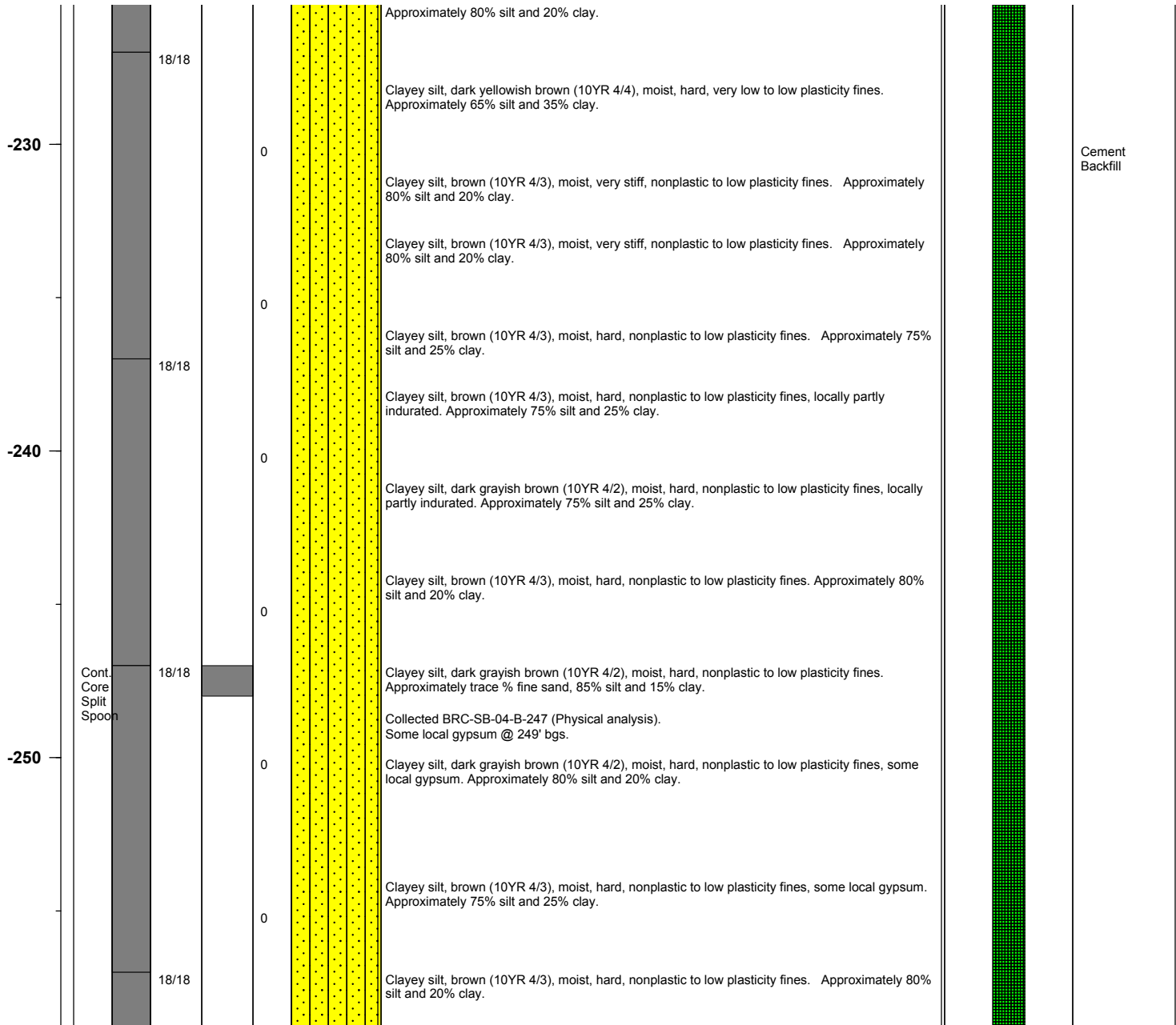
BMI Site - Hydrogeologic Characterization

Henderson, Nevada



Log of Boring No. BRC-SB-04-B

Depth Elevation (MSLD)	Sample Type	Sample Interval	Sample Recovery (feet)	Sample Retained for Analysis	PID	Lithology	Soil Description	Well Construction
---------------------------	-------------	-----------------	---------------------------	---------------------------------	-----	-----------	------------------	-------------------



Project No. 3850360

Log of Boring: BRC-SB-04-B



BMI Site - Hydrogeologic Characterization

Henderson, Nevada



Log of Boring No. BRC-SB-04-B

Depth Elevation (MSLD)	Sample Type	Sample Interval	Sample Recovery (feet)	Sample Retained for Analysis	PID	Lithology	Soil Description	Well Construction
---------------------------	-------------	-----------------	---------------------------	---------------------------------	-----	-----------	------------------	-------------------

-260					0		Clayey silt, grayish brown (10YR 5/2), moist, hard, nonplastic to low plasticity fines. Approximately 80% silt and 20% clay.	
					0		Clayey silt, grayish brown (10YR 5/2), moist, hard, nonplastic to low plasticity fines. Approximately 75% silt and 25% clay.	
		18/18					Clayey silt, dark grayish brown (10YR 4/2), moist, very stiff to hard, nonplastic to very low plasticity fines, trace local gypsum. Approximately 80% silt and 20% clay.	
-270					0			
					0		Clayey silt, dark grayish brown (10YR 4/2), moist, hard, nonplastic to very low plasticity fines. Approximately trace fine sand, 80% silt and 20% clay.	
		18/18					Clayey silt, dark grayish brown (10YR 4/2), moist, hard, nonplastic to very low plasticity fines. Approximately trace fine sand, 80% silt and 20% clay.	
					0		Clayey silt, greenish gray (5GY 5/1), moist, very stiff to hard, nonplastic to very low plasticity fines. Approximately 75% silt and 25% clay.	
-280					0		Clayey silt, greenish gray (10GY 5/1), moist, very stiff to hard, nonplastic to very low plasticity fines. Approximately 85% silt and 15% clay.	
					0		Clayey silt, greenish gray (5GY 5/1), moist, hard, nonplastic to very low plasticity fines. Approximately 5% fine sand, 80% silt and 15% clay.	
					0		Clayey silt, light green gray (5GY 8/1), moist, very stiff, nonplastic to very low plasticity fines, trace local green mottling. Approximately 85% silt and 15% clay.	
		18/18					Clayey silt, greenish gray (5GY 6/1), moist, very stiff, nonplastic to very low plasticity fines, trace local gypsum, laminated. Approximately 85% silt and 15% clay.	
-290					0		Some light greenish gray (10YR 7/1) and very dark gray (3/N) color mottling.	
							Clayey silt, dark gray (4N), moist, very stiff to hard, nonplastic to very low plasticity fines, trace	

Cement
Backfill

Project No. 3850360

Log of Boring: BRC-SB-04-B



Page 9 of 13

BMI Site - Hydrogeologic Characterization

Henderson, Nevada



Log of Boring No. BRC-SB-04-B

Depth Elevation (MSLD)	Sample Type	Sample Interval	Sample Recovery (feet)	Sample Retained for Analysis	PID	Lithology	Soil Description	Well Construction
---------------------------	-------------	-----------------	---------------------------	---------------------------------	-----	-----------	------------------	-------------------

							local gypsum. Approximately 85% silt and 15% clay.	
					0		Clayey silt, greenish gray (10Y 6/1), moist, very stiff, nonplastic to very low plasticity fines, trace local gypsum, some laminations. Approximately 85% silt and 15% clay.	Cement Backfill
		18/18						
							Clayey silt, greenish gray (5GY 6/1) and gark gray (4N), moist, very stiff to hard, nonplastic to very low plasticity fines, some laminations, trace local gypsum. Approximately 85% silt and 15% clay.	
-300					0		Clayey silt, greenish gray (5GY 6/1) and gark gray (4N), moist, very stiff to hard, nonplastic to very low plasticity fines, some laminations, trace local gypsum. Approximately 85% silt and 15% clay.	
							Clayey silt, dark greenish gray (10Y 4/1), moist, hard, nonplastic to very low plasticity fines, trace local gypsum. Approximately trace fine sand, 85% silt and 15% clay.	
		18/18						
							Clayey silt, greenish gray (5GY 6/1), moist, very stiff to hard, nonplastic to very low plasticity fines, trace local gypsum. Approximately 85% silt and 15% clay.	
-310					0		Clayey silt, greenish gray (10Y 6/1), dry to moist, hard, nonplastic to very low plasticity fines. Approximately 85% silt and 15% clay.	
							Clayey silt, greenish gray (5GY 5/1), dry to moist, hard, nonplastic to very low plasticity fines, trace local gypsum. Approximately 70% silt and 30% clay.	
		18/18						
							Clayey silt, dark greenish gray (5GY 4/1), moist, hard, nonplastic to very low plasticity fines. Approximately 70% silt and 30% clay.	
-320					0		Clayey silt, dark grayish brown (10YR 4/2), moist, very stiff, nonplastic to very low plasticity fines. Approximately 75% silt and 25% clay.	
							Clayey silt, brown (10YR 5/3), moist, hard, nonplastic to very low plasticity fines. Approximately 70% silt and 30% clay.	
					0			

Project No. 3850360

Log of Boring: BRC-SB-04-B



BMI Site - Hydrogeologic Characterization

Henderson, Nevada



Log of Boring No. BRC-SB-04-B

Depth Elevation (MSLD)	Sample Type	Sample Interval	Sample Recovery (feet)	Sample Retained for Analysis	PID	Lithology	Soil Description	Well Construction
---------------------------	-------------	-----------------	---------------------------	---------------------------------	-----	-----------	------------------	-------------------

-330		18/18			0		Clayey silt, dark grayish brown (10YR 4/2), moist, hard, nonplastic to very low plasticity fines. Approximately 80% silt and 20% clay.	
					0		Silt with sand, grayish brown (10YR 4/2), moist, medium stiff to hard, nonplastic to low plasticity fines. Approximately 15% fine sand, 85% silt and trace clay.	
					0		Clayey silt, dark grayish brown (10YR 4/2), moist, hard, nonplastic to very low plasticity fines, partly indurated to weakly cemented @ 331' to 331.5' bgs. Approximately 80% silt and 20% clay.	
		18/18			0		Clayey silt, dark greenish brown (10YR 4/2), moist, hard, nonplastic to very low plasticity fines. Approximately 85% silt and 15% clay.	
-340					0		Clayey silt, dark greenish brown (10YR 4/2), moist, hard, nonplastic to very low plasticity fines. Approximately 5% fine sand, 80% silt and 15% clay.	
					0		Clayey silt, brown (10YR 4/3), moist, hard, nonplastic to very low plasticity fines. Approximately 75% silt and 25% clay.	
					0		Clayey silt, brown (10YR 4/3), moist, hard, nonplastic to very low plasticity fines. Approximately 75% silt and 25% clay.	
		18/18			0		Clayey silt, light greenish gray (5GY 7/1), moist, hard, nonplastic to very low plasticity fines. Approximately 85% silt and 15% clay.	
-350					0		Clayey silt, greenish gray (5GY 5/1), moist, hard, nonplastic to very low plasticity fines, trace local gypsum, some local green mottling @ 352' bgs.. Approximately 85% silt and 15% clay.	
					0		Clayey silt, grayish brown (10YR 5/2), dry to moist, hard, nonplastic to very low plasticity fines, some gypsum content @ 356.5' bgs. Approximately 5% fine sand, 80% silt and 15% clay.	
		18/18					Clayey silt, dark grayish brown (10YR 4/2), moist, hard, nonplastic to very low plasticity fines. Approximately 85% silt and 15% clay.	

Project No. 3850360

Log of Boring: BRC-SB-04-B



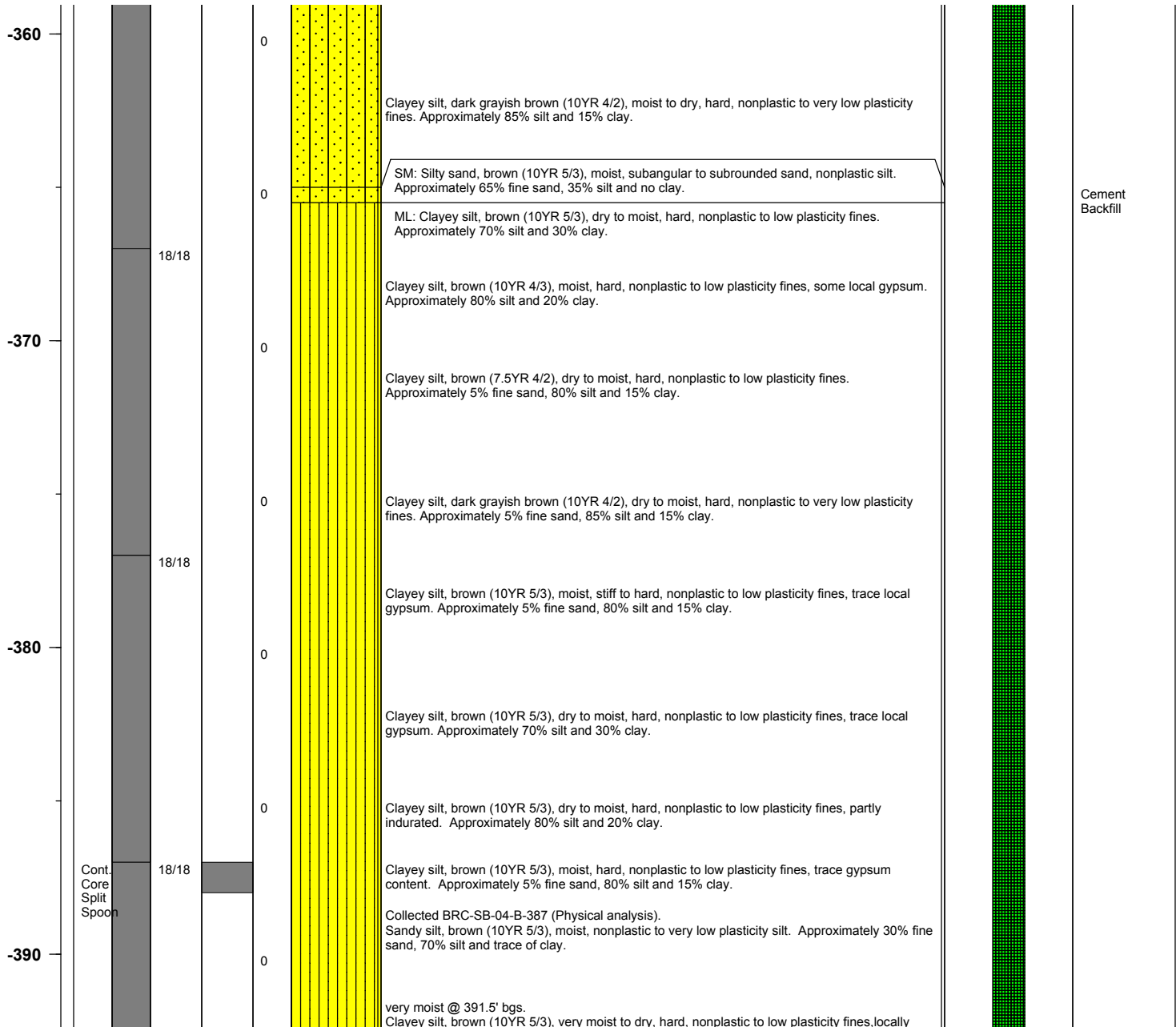
BMI Site - Hydrogeologic Characterization

Henderson, Nevada



Log of Boring No. BRC-SB-04-B

Depth Elevation (MSLD)	Sample Type	Sample Interval	Sample Recovery (feet)	Sample Retained for Analysis	PID	Lithology	Soil Description	Well Construction
---------------------------	-------------	-----------------	---------------------------	---------------------------------	-----	-----------	------------------	-------------------



Project No. 3850360

Log of Boring: BRC-SB-04-B



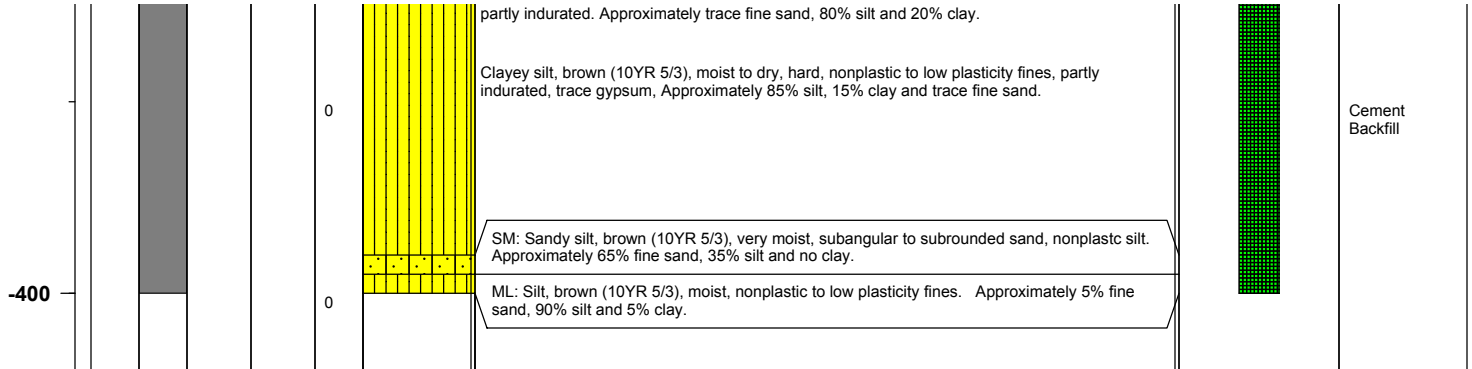
BMI Site - Hydrogeologic Characterization

Henderson, Nevada



Log of Boring No. BRC-SB-04-B

Depth Elevation (MSLD)	Sample Type	Sample Interval	Sample Recovery (feet)	Sample Retained for Analysis	PID	Lithology	Soil Description	Well Construction
---------------------------	-------------	-----------------	---------------------------	---------------------------------	-----	-----------	------------------	-------------------



Project No. 3850360

Log of Boring: BRC-SB-04-B

