

Log of Boring No. BRC-SB-17-A

BMI Site - Hydrogeologic Characterization

Henderson, Nevada



Drilling Method: Rotary Sonic
Drilling Equipment: Rotary Sonic
Drilling Contractor: Prosonic Corporation
Driller: Don Youngblood

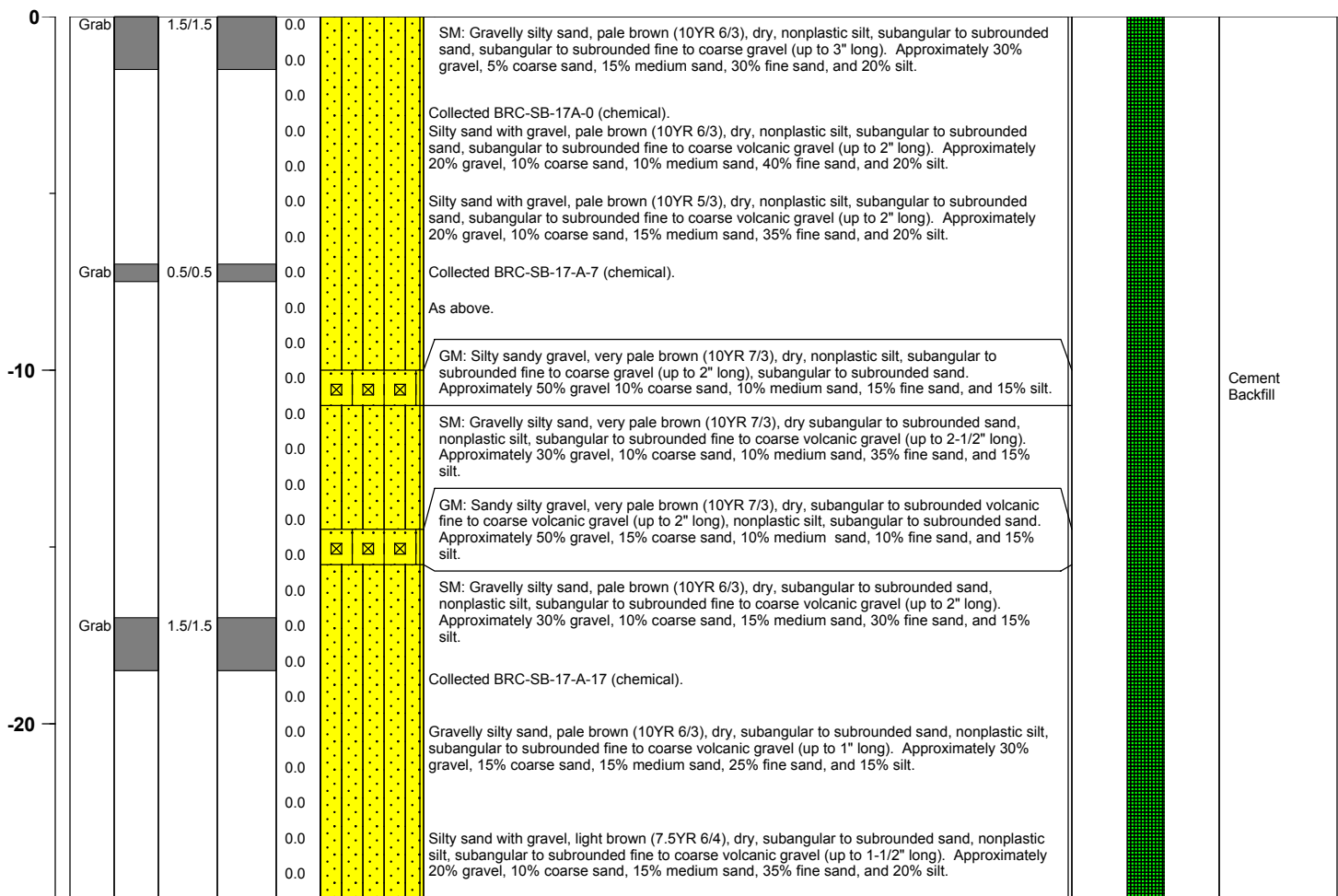
Borehole Total Depth: 97 ft bgs
Borehole Diameter: 8.5 in
Boring Location: Location 17
Depth to Water (ft. bgs): ∞

Sample Type: Split spoon
Sample Interval: 5 ft

Logged By: Adam Norris
Date Started: 7/7/04
Date Completed: 7/7/04

Monitoring Well Construction			
Type of Surface Seal:	N/A	Screen Slot Size:	N/A
Blank Casing Type/Size:	N/A	Top of Screen (ft. bgs):	N/A
Screen Type/Size:	N/A	Bottom of Screen (ft. bgs):	N/A
Transition Sand Type:	N/A	Type of Sand Pack:	N/A

Depth Elevation (MSLD)	Sample Type	Sample Interval	Sample Recovery (feet)	Sample Retained for Analysis	PID	Lithology	Soil Description	Well Construction
---------------------------	-------------	-----------------	---------------------------	---------------------------------	-----	-----------	------------------	-------------------



Project No. 3850360

Log of Boring: BRC-SB-17-A



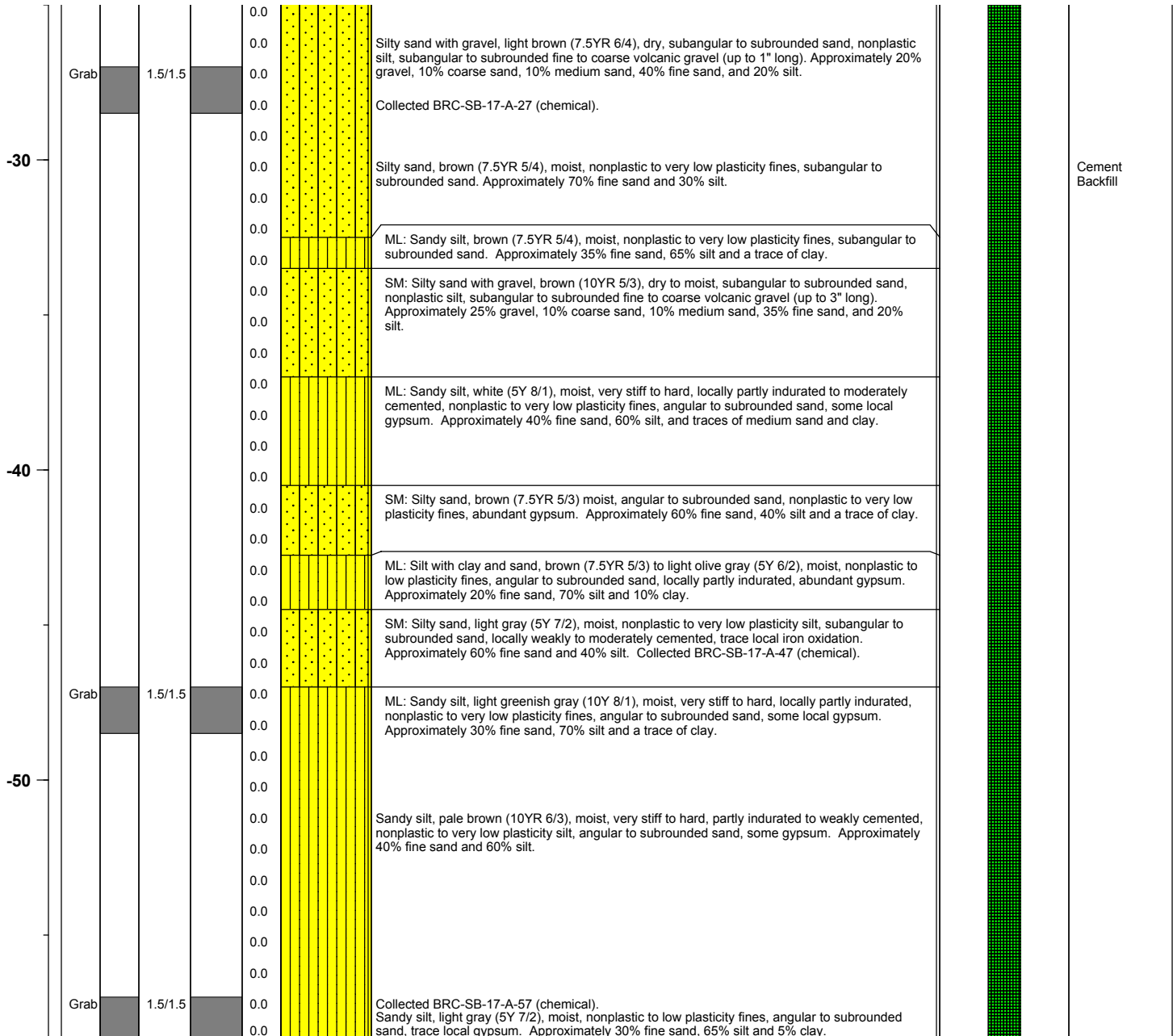
BMI Site - Hydrogeologic Characterization

Henderson, Nevada



Log of Boring No. BRC-SB-17-A

Depth Elevation (MSLD)	Sample Type	Sample Interval	Sample Recovery (feet)	Sample Retained for Analysis	PID	Lithology	Soil Description	Well Construction
---------------------------	-------------	-----------------	---------------------------	---------------------------------	-----	-----------	------------------	-------------------



Project No. 3850360

Log of Boring: BRC-SB-17-A



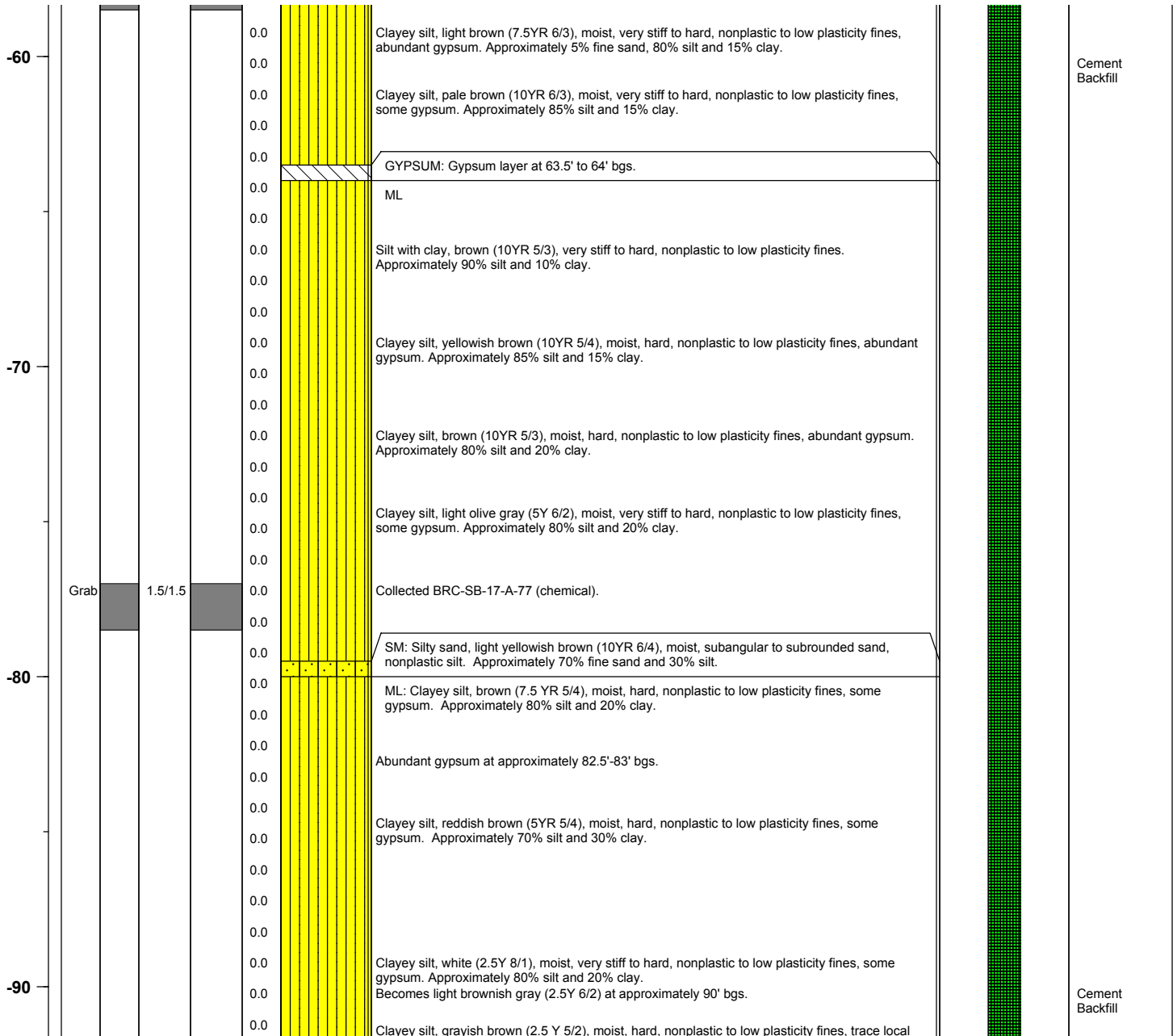
BMI Site - Hydrogeologic Characterization

Henderson, Nevada



Log of Boring No. BRC-SB-17-A

Depth Elevation (MSLD)	Sample Type	Sample Interval	Sample Recovery (feet)	Sample Retained for Analysis	PID	Lithology	Soil Description	Well Construction
---------------------------	-------------	-----------------	---------------------------	---------------------------------	-----	-----------	------------------	-------------------



Project No. 3850360

Log of Boring: BRC-SB-17-A



BMI Site - Hydrogeologic Characterization

Henderson, Nevada



Log of Boring No. BRC-SB-17-A

Depth Elevation (MSLD)	Sample Type	Sample Interval	Sample Recovery (feet)	Sample Retained for Analysis	PID	Lithology	Soil Description	Well Construction
---------------------------	-------------	-----------------	---------------------------	---------------------------------	-----	-----------	------------------	-------------------

					0.0		gypsum. Approximately 85% silt and 15% clay with a trace of fine sand.	
					0.0		Clayey silt, grayish brown (10YR 5/2), moist, hard, nonplastic to low plasticity fines, some local gypsum. Approximately 80% silt and 20% clay.	
					0.0			
					0.0		Collected BRC-SB-17-A-97 (chemical). Bottom of hole at 97' bgs.	
					0.0		Clayey silt, brown (7.5YR 5/4), moist, nonplastic to low plasticity fines, angular to subrounded sand, locally partly indurated, some gypsum. Approximately 10% fine sand, 75% silt and 15% clay.	

Project No. 3850360

Log of Boring: BRC-SB-17-A

