

## DAILY PRODUCTION & QUALITY CONTROL REPORT

Project No./Contract No.	Project Title / Location	Day of Report	Report No.
6389	<b>BRC Eastside Common Areas Soils Remediation</b>	27-Aug-08	<b>59</b>

### PROJECT POINTS OF CONTACT

Position	Name	E-Mail Address	Phone No.
BRC PROJECT MANAGER	Lee Farris, On Site.	<a href="mailto:lfarris@landwellco.com">lfarris@landwellco.com</a>	702-567-0400
BRC PROJECT MANAGER	Ranajit Sahu	<a href="mailto:sahuron@earthlink.net">sahuron@earthlink.net</a>	702-567-0400
CONST. PROJECT MANAGER	Dan Brennecke	<a href="mailto:Dan.Brennecke@westonsolutions.com">Dan.Brennecke@westonsolutions.com</a>	970-260-5886
Construction Manager	Richard Laubinger	<a href="mailto:Richard.Laubinger@westonsolutions.com">Richard.Laubinger@westonsolutions.com</a>	720-641-8660

### WEATHER CONDITIONS

Conditions				Temp (°F)	Wind	Add'l Readings	
AM	Sunny / Party Cloudy	PM	Sunny / Party Cloudy	Low 79		Precip. (in/Dy.)	
				High 104	ENE 3mph	Humidity (%)	
Additional Weather Comments Calm to Light Wind..							

### ON-SITE WESTON PERSONNEL

Name	Position	Trade / Work Performed	Y/N
Dick Laubinger	Construction Manager	Construction Management Services.	Y
Dan Brennecke	Project Manager. CM	Construction Management Services.	Y
Dave Gertz	Project Engineer	Construction Management Services.	Y
June Laubinger	Admin Assistant	Construction Management Services.	Y
Linda Nations	Asst Const Manager	Construction Management Services	Y

### ON-SITE GEOSYNTEC PERSONNEL

Name	Position	Trade / Work Performed	Y/N
Wayne Wofford	QA/QC Tech	Oversight	Y
Brent Barbacane	QA/QC Tech	Oversight	Y
Jim Cox	QA/QC Supervisor	Oversight	N
Greg Corcoran	Engineer of Record	Oversight	N
Rebecca Flynn	Engineer	Oversight	Y
Camon Liddell	QA/QC Tech	Oversight	N
Dan Street	QA Manager	Oversight	Y

### ON-SITE SUPPORT PERSONNEL

Name	Position	Trade / Work Performed	Y/N
Doug Herlocker, Tetra Tech	Air Monitoring Specialist	Air Monitoring.	N
Becky Dano, Tetra Tech	Air Monitoring Specialist	Air Monitoring.	Y
Jerry Fauchaux, Tetra Tech	Air Monitoring Specialist	Air Monitoring	Y

### OVERSITE PERSONNEL

Name	Position	Trade / Work Performed	Y/N
Scott McKeag, McGinley	Oversight	For NDEP	N
Devin Gordon, McGinley	Oversight	For NDEP	Y
Dock Kim, ATC	Field Observation	For AIG	Y
Ron Perry, ASW	Inspector	Liner Inspector	N
PBS&J, Survey	Surveyors		N

### ON-SITE CONTRACTOR PERSONNEL

Name	Company	Trade / Work Performed	Y/N
Erik Geringer	Entact	Project Manager	Y
Josh Carrol	Entact	Asst Project Manager	Y
Russ Karnes	Entact	Eastside, Superintendent	Y
Michael Carlson	Entact	Engineer	Y
Joe Curilla	Entact	Health & Safety Officer	Y
Michael Parker	Entact	Health and Safety Technician	Y
	Entact	22 Equipment Operators & Truck Drivers	Y
Ed Long	Entact	CAMU, Superintendent	Y
	American Asphalt	Earthwork Superintendent	Y
	American Asphalt	11 Equipment Operators & Truck Drivers,	Y
Rick McIntire	Entact	CSP, Safety	Y
	Environmental Specialties, Inc	Liner Superintendent	N
	Environmental Specialties, Inc	1 Liner Seamer on site.	Y
	Kenney Survey	CAMU	Y

## DAILY PRODUCTION & QUALITY CONTROL REPORT

Project No./Contract No.	Project Title / Location	Day of Report	Report No.
6389	<b>BRC Eastside Common Areas Soils Remediation</b>	27-Aug-08	<b>59</b>


### ON-SITE EQUIPMENT

Equipment	Vendor / Tag No.	Work Performed					
CAT D400E Dump Truck (2)		CAMU	-	-	-	-	-
JD D400 Dump Trucks (6)		Eastside		-	-	-	-
CAT 324D long stick excavator		CAMU	-	-	-	-	-
CAT D8R Dozer with disc		Eastside		-	-	-	-
CAT 345 excavator		Eastside		-	-	-	-
CAT 330 Excavator		Eastside		-	-	-	-
Case double pan scrapers.		Eastside		-	-	-	-
CAT D6 LGP Dozer (2)		Eastside					-
Water Trucks (2)		Eastside					-
637/631 Cat Scrapers (6)		CAMU					-
CAT 16H Grader		CAMU					-
CAT D-10 Dozer		CAMU					-
CAT Water Wagon		CAMU					-
CAT D-6 Dozer		CAMU					-
CAT 14H Grader		CAMU					-
Gradall		CAMU					-
Bobcat Skidsteer		CAMU					-
JLG		CAMU					-
CAT D4 dozer		CAMU					-
							-
							-
							-
							-

### MATERIAL HANDLING (ON-SITE DELIVERY / REMOVAL)

Material	Vendor	QTY	UOM	Purpose	Delivery Verification			
					Condn	Qty	Spec	Tags
GCL	CETCO	0	rolls	For CAMU				
Geocomposite	Agru	0	rolls	For CAMU				
Woven Geotextile		0	rolls	For CAMU				

### WORK COMPLETED

*Description of Work Executed Today*

#### Eastside Mixing and Drying Activity:

- Loading out prepared material from CTR-2 using 345 excavator. (4) haul trucks hauling to beta ditch. 188 loads, (3,760) cy.
- D6 dozer spread prepared soils at the beta ditch.
- D8 Dozer continued disking operation.
- Versatile tractor and Pans. 0 loads, (0) cy. No Activity.
- Motorgrader maintaining roads. Water truck managing dust control.
- Continued pumping water from SC-1 to SW-12.

#### CAMU Activity:

##### Excavation

- Northwest Detention Basin excavation - 631/637 scrapers - (1,200) cy.
- Western Ditch. Power screener screening operations layer.
- Entact maintained 12" clean soil cap over west haul rd and bypass rd.
- Continued Anchor trench backfill and compaction.

##### Embankment

- Phase 1 embankment, complete.
- Phase 1 estimated cumulative embankment placed: 0 cy

##### Waste Placement

- Phase 1 estimated daily waste placed: 0 cy
- Phase 1 estimated cumulative waste placed: 0 cy
- Phase 1 Operations Layer placed daily 50 loads, (900) cy

##### Geosynthetics

- Phase 1. Shovel out silt and debris clean liner and install toe drain at east slope toe.
- Phase 1 GCL placed: 0 sf daily, 347,067 sf cumulative.
- Phase 1 Geomembrane: 0 sf daily, 365,136 sf cumulative
- Phase 1 Geocomposite: 0 sf daily, 327,600 sf cumulative.
- Phase 1 Geotextile: (0) sf daily..

**Other:** Grading at Sewer realignment corridor crossroad.



## DAILY PRODUCTION &amp; QUALITY CONTROL REPORT

Project No./Contract No.	Project Title / Location	Day of Report	Report No.
6389	<b>BRC Eastside Common Areas Soils Remediation</b>	27-Aug-08	<b>59</b>

**Perimeter Fence Inspection and Repair.**

## HEALTH & SAFETY

Description of Health &amp; Safety Actions Taken Today / Safety Inspections Conducted

### Entact H&S Tailgates

Morning: Slips, trip and falls. Night work.

**ESI, Liner Crew:** Off Site.

Afternoon: Hydration, high temperatures.

## American Asphalt Tailgates

Morning: Slips, trips and falls.

**Safety Incidents:** No Incidents.

### QUALITY CONTROL

Description of Quality Control Actions Taken Today / Quality Inspections Conducted

Daily CQA Summary.

Inspected 12" capped haul roads for degradation. All areas ok.

2am start of operations layer placement on liner, halted at 11:50 am.. Wrinkles beginning.

ESI on site to handle minor repairs.

Inspected LCRS pipe for silt, no damage. Contractor to flush out piping.

**Dust:** Met requirements.

Deviations from CQA Plan	
1	
2	
3	
4	
5	
6	
7	
8	
9	
10	
11	
12	
13	
14	
15	
16	
17	
18	
19	
20	
21	
22	
23	
24	
25	
26	
27	
28	
29	
30	
31	
32	
33	
34	
35	
36	
37	
38	
39	
40	
41	
42	
43	
44	
45	
46	
47	
48	
49	
50	
51	
52	
53	
54	
55	
56	
57	
58	
59	
60	
61	
62	
63	
64	
65	
66	
67	
68	
69	
70	
71	
72	
73	
74	
75	
76	
77	
78	
79	
80	
81	
82	
83	
84	
85	
86	
87	
88	
89	
90	
91	
92	
93	
94	
95	
96	
97	
98	
99	
100	

### ISSUES AND/OR ITEMS OF DISCUSSION

Discussion of Issues / Concerns / Conversations / Topics

CAMU: Burrowing Owls, No sighting...

CAMU: Phase 1 night work began, 2 AM placing operations layer at cooler temperatures.

Weekly Progress Meeting held at BRC Offices.

## SITE VISITORS

[illegible]

Report Prepared By / Title

**Dick Laubinger, Construction Manager**

Date Prepared

27-Aug-08

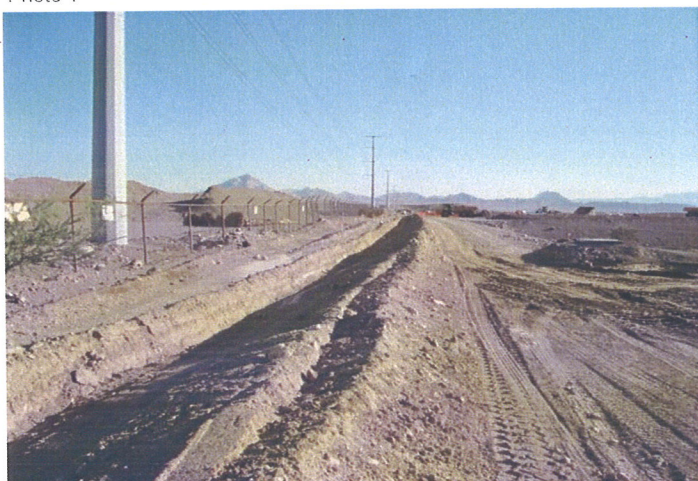
Signature \_\_\_\_\_

## DAILY PRODUCTION & QUALITY CONTROL REPORT

Project No./Contract No.	Project Title / Location	Day of Report	Report No.
<b>6389</b> 0	<b>BRC Eastside Common Areas Soils Remediation</b> 0	27-Aug-08	<b>59</b>

### DAILY PHOTO LOG

Photo 1



CAMU, Ditch on West side to stop run in to Phase 1..

Photo 2



CAMU: Ditch on South side to stop run in to Phase 2.

Photo 3



Eastside. Fence installation at crossroad sewer realignment.

Photo 4



CAMU, Phase 1 East slope coverage of operations layer.