

DAILY PRODUCTION & QUALITY CONTROL REPORT

| Project No./Contract No. | Project Title / Location | Day of Report | Report No. |
|--------------------------|---|---------------|------------|
| 6389 | BRC Eastside Common Areas Soils Remediation | 29-Aug-08 | 61 |

PROJECT POINTS OF CONTACT

| Position | Name | E-Mail Address | Phone No. |
|------------------------|-----------------------|---------------------------------|--------------|
| BRC PROJECT MANAGER | Lee Farris, On Site | lfarris@landwellco.com | 702-567-0400 |
| BRC PROJECT MANAGER | Ranajit Sahu, On Site | sahuron@earthlink.net | 702-567-0400 |
| CONST. PROJECT MANAGER | Dan Brennecke | Dan.Brennecke@westonsolutions. | 970-260-5886 |
| Construction Manager | Richard Laubinger | Richard.Laubinger@westonsolutio | 720-641-8660 |

WEATHER CONDITIONS

| Conditions | | | | Temp (F) | | Wind | | Add'l Readings | |
|------------|--------|----|--------|----------|-----|------|------|-----------------|--|
| AM | Cloudy | PM | Cloudy | Low | 82 | | | Precip. (in/hr) | |
| | | | | High | 107 | W | 6mph | Humidity (%) | |

Additional Weather Comments

Light wind.

ON-SITE WESTON PERSONNEL

| Name | Position | Trade / Work Performed | Y/N |
|----------------|----------------------|-----------------------------------|-----|
| Dick Laubinger | Construction Manager | Construction Management Services. | Y |
| Dan Brennecke | Project Manager. CM | Construction Management Services. | N |
| Dave Gertz | Project Engineer | Construction Management Services. | N |
| June Laubinger | Admin Assistant | Construction Management Services. | Y |
| Linda Nations | Asst Const Manager | Construction Management Services | Y |

ON-SITE GEOSYNTEC PERSONNEL

| Name | Position | Trade / Work Performed | Y/N |
|-----------------|--------------------|------------------------|-----|
| Wayne Wofford | QA/QC Tech | Oversight | N |
| Brent Barbacane | QA/QC Tech | Oversight | Y |
| Jim Cox | QA/QC Supervisor | Oversight | N |
| Greg Corcoran | Engineer of Record | Oversight | N |
| Robecca Flynn | Engineer | Oversight | N |
| Camon Liddell | QA/QC Tech | Oversight | N |
| Dan Street | QA Manager | Oversight | Y |

ON-SITE SUPPORT PERSONNEL

| Name | Position | Trade / Work Performed | Y/N |
|----------------------------|---------------------------|------------------------|-----|
| Doug Herlocker, Tetra Tech | Air Monitoring Specialist | Air Monitoring. | N |
| Becky Dano, Tetra Tech | Air Monitoring Specialist | Air Monitoring. | Y |
| Jerry Fauchaux, Tetra Tech | Air Monitoring Specialist | Air Monitoring | Y |
| | | | |
| | | | |

OVERSITE PERSONNEL

| Name | Position | Trade / Work Performed | Y/N |
|------------------------|-------------------|------------------------|-----|
| Scott McKeag, McGinley | Oversight | For NDEP | N |
| Devin Gordon, McGinley | Oversight | For NDEP | Y |
| Dock Kim, ATC | Field Observation | For AIG | N |
| Ron Perry, ASW | Inspector | Liner Inspector | N |
| PBS&J, Survey | Surveyors | | N |
| | | | |

ON-SITE CONTRACTOR PERSONNEL

| Name | Company | Trade / Work Performed | Y/N |
|-----------------|--------------------------------|---|-----|
| Erik Geringer | Entact | Project Manager | Y |
| Josh Carrol | Entact | Asst Project Manager | N |
| Russ Karnes | Entact | Eastside, Superintendent | N |
| Michael Carlson | Entact | Engineer | N |
| Joe Curilla | Entact | Health & Safety Officer | Y |
| Timothy Stadt | Entact | Health and Safety Technician | Y |
| | Entact | 22 Equipment Operators & Truck Drivers | Y |
| Ed Long | Entact | CAMU, Superintendent | Y |
| | American Asphalt | Earthwork Superintendent | Y |
| | American Asphalt | 11 Equipment Operators & Truck Drivers, | Y |
| Rick McIntire | Entact | CSP, Safety | N |
| | | | |
| | Environmental Specialties, Inc | Liner Superintendent | N |
| | Environmental Specialties, Inc | 1 Liner Seamer on site. | Y |
| | | | |
| | Kenney Survey | CAMU | Y |

DAILY PRODUCTION & QUALITY CONTROL REPORT

| Project No./Contract No. | Project Title / Location | Day of Report | Report No. |
|--------------------------|---|---------------|------------|
| 6389 | BRC Eastside Common Areas Soils Remediation | 29-Aug-08 | 61 |

| | | | | |
|--|--|--|--|--|
| | | | | |
| | | | | |
| | | | | |
| | | | | |
| | | | | |

ON-SITE EQUIPMENT

| Equipment | Vendor / Tag No. | Work Performed | | | | |
|-------------------------------|------------------|----------------|---|---|---|---|
| CAT D400E Dump Truck (2) | | CAMU | - | - | - | - |
| JD D400 Dump Trucks (6) | | Eastside | | - | - | - |
| CAT 324D long stick excavator | | CAMU | - | - | - | - |
| CAT D8R Dozer with disc | | Eastside | | - | - | - |
| CAT 345 excavator | | Eastside | | - | - | - |
| CAT 330 Excavator | | Eastside | | - | - | - |
| Case double pan scrapers. | | Eastside | | - | - | - |
| CAT D6 LGP Dozer (2) | | Eastside | | | | - |
| Water Trucks (2) | | Eastside | | | | - |
| 637/631 Cat Scrapers (6) | | CAMU | | | | - |
| CAT 16H Grader | | CAMU | | | | - |
| CAT D-10 Dozer | | CAMU | | | | - |
| CAT Water Wagon | | CAMU | | | | - |
| CAT D-6 Dozer | | CAMU | | | | - |
| CAT 14H Grader | | CAMU | | | | - |
| Gradall | | CAMU | | | | - |
| Bobcat Skidsteer | | CAMU | | | | - |
| JLG | | CAMU | | | | - |
| CAT D4 dozer | | CAMU | | | | - |
| | | | | | | - |
| | | | | | | - |
| | | | | | | - |

MATERIAL HANDLING (ON-SITE DELIVERY / REMOVAL)

| Material | Vendor | QTY | UOM | Purpose | Delivery Verification | | | |
|------------------|--------|-----|-------|----------|-----------------------|-----|------|------|
| | | | | | Conth | Qty | Spec | Tags |
| GCL | CETCO | 0 | rolls | For CAMU | | | | |
| Geocomposite | Agru | 0 | rolls | For CAMU | | | | |
| Woven Geotextile | | 0 | rolls | For CAMU | | | | |

WORK COMPLETED

Description of Work Executed Today

Eastside Mixing and Drying Activity:

- Loaded out from dry ponds. No quantities. given.
- Water truck sprayed haul roads for dust control.
-
-
-

CAMU Activity:

Excavation

- Northwest Detention Basin excavation - 631/637 scrapers - (0) cy. No Activity
- Western Ditch. Power screener screening operations layer. Two (AAG) workers assisting in screening operation.
- Entact maintained 12" clean soil cap over west haul rd and bypass rd.
- Continued dewatering phase 1 sump of stormwater.

Embankment

- Phase 1 embankment, complete.
- Phase 1 estimated cumulative embankment placed: 0 cy

Waste Placement

- Phase 1 estimated daily waste placed: 0 cy
- Phase 1 estimated cumulative waste placed: 0 cy
- Phase 1 Operations Layer placed daily 0 loads, (0) cy No truck counts or quantities given.

Geosynthetics

- Phase 1 Spread 6 mil poly plastic over remaining floor temporarily to meet spec. Maintained in place as needed.
- Phase 1 GCL placed: 0 sf daily, 347,067 sf cumulative.
- Phase 1 Geomembrane:0 sf daily, 365,136 sf cumulative
- Phase 1 Geocomposite: 0 sf daily, 327,600 sf cumulative.
- Phase 1 Geotextile: (0) sf daily..

Other: Sewer realignment corridor crossroad. No Activity.

DAILY PRODUCTION & QUALITY CONTROL REPORT

| Project No./Contract No. | Project Title / Location | Day of Report | Report No. |
|--------------------------|---|---------------|------------|
| 6389 | BRC Eastside Common Areas Soils Remediation | 29-Aug-08 | 61 |
| | | | |

Owner: Control reassignment control crossroad; no Activity.

Perimeter Fence Inspection and Repair.

No Issues.

HEALTH & SAFETY

| <i>Description of Health & Safety Actions Taken Today / Safety Inspections Conducted</i> | | | | | |
|--|--|--|--|--|--|
| | | | | | |

Entact H&S Tailgates

Morning: Holiday weekend, driving safety.

ESI, Liner Crew: One seamer on site. Repairing as needed.

Afternoon: Hydration, high temperatures.

American Asphalt Tailgates

Morning: Hydrate.

Safety Incidents: No Incidents.

QUALITY CONTROL

| Description of Quality Control Actions Taken Today / Quality Inspections Conducted | |
|--|--|
| | |

Daily CQA Summary.

Inspected 12" capped haul roads for degradation. All areas ok.

Operations layer placement shut down at 11:05, due to wrinkles developing from heat.

Operations layer placement on liner. Placed until 7:30 pm. Inspected plastic on floor had Entact maintain as needed.

ESI on site to handle minor repairs.

Dust: Met requirements.

ISSUES AND/OR ITEMS OF DISCUSSION

Discussion of Issues / Concerns / Conversations / Topics

CAMU: Burrowing Owls, No sighting..

CAMU: Phase 1 night work continued. Operation layer until 7:30 pm. Power Screener continued until 1 AM.

SITE VISITORS

[illegible]

| | | |
|----------------------------|---------------|-----------|
| Report Prepared By / Title | Date Prepared | Signature |
|----------------------------|---------------|-----------|

Dick Laubinger, Construction Manager 30-Aug-08

| | |
|---------------|-----------|
| Date Prepared | Signature |
|---------------|-----------|

30-Aug-08

Signature _____

Basic Remediation Company

875 West Warm Springs Road
Henderson, Nevada 89011

DAILY PRODUCTION & QUALITY CONTROL REPORT

| Project No./Contract No. | Project Title / Location | Day of Report | Report No. |
|--------------------------|--|---------------|------------|
| 6389 0 | BRC Eastside Common Areas Soils Remediation 0 | 29-Aug-08 | 61 |

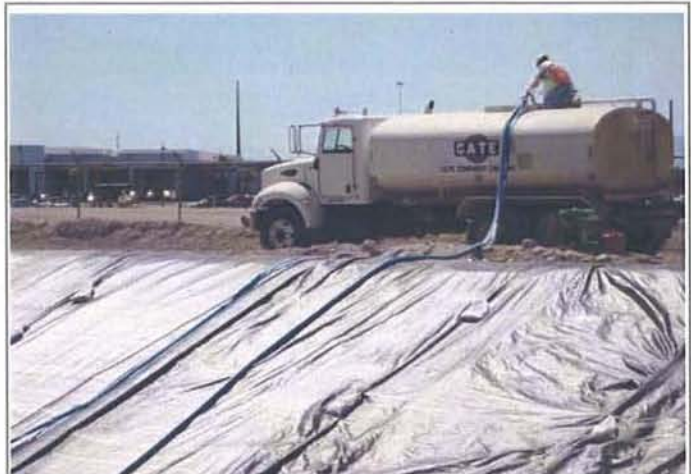
DAILY PHOTO LOG

Photo 1



CAMU, Phase 1, operations layer placement.

Photo 2



CAMU: Phase 1 dewatering sump.

Photo 3



CAMU: Western Ditch Screening operation.

Photo 4



CAMU, Phase 1, Operations layer, plastic covering and silt run on.