

## DAILY PRODUCTION & QUALITY CONTROL REPORT

Project No./Contract No.	Project Title / Location	Day of Report	Report No.
6389	<b>BRC Eastside Common Areas Soils Remediation</b>	06-Sep-08	69

### PROJECT POINTS OF CONTACT

Position	Name	E-Mail Address	Phone No.
BRC PROJECT MANAGER	Lee Farris	lfarris@landwellco.com	702-567-0400
BRC PROJECT MANAGER	Ranajit Sahu,	sahuron@earthlink.net	702-567-0400
CONST. PROJECT MANAGER	Dan Brennecke	Dan.Brennecke@westonsolutions.	970-260-5886
Construction Manager	Richard Laubinger	Richard.Laubinger@westonsolutio	720-641-8660

### WEATHER CONDITIONS

Conditions				Temp (°F)		Wind		Add'l Readings	
AM	Sunny/Clear	PM	Sunny/Clear	Low	74			Precip. (in/Dy.)	
				High	105	NW	6mph	Humidity (%)	

Additional Weather Comments

Calm to light wind in afternoon.

### ON-SITE WESTON PERSONNEL

Name	Position	Trade / Work Performed	Y/N
Dick Laubinger	Construction Manager	Construction Management Services.	Y
Dan Brennecke	Project Manager, CM	Construction Management Services.	N
Dave Gertz	Project Engineer	Construction Management Services.	N
June Laubinger	Admin Assistant	Construction Management Services.	N
Linda Nations	Asst Const Manager	Construction Management Services	N

### ON-SITE GEOSYNTEC PERSONNEL

Name	Position	Trade / Work Performed	Y/N
Wayne Wofford	QA/QC Tech	Oversight	Y
Brent Barbacane	QA/QC Tech	Oversight	N
Jim Cox	QA/QC Supervisor	Oversight	N
Greg Corcoran	Engineer of Record	Oversight	N
Rebecca Flynn	Engineer	Oversight	N
Carmon Liddell	QA/QC Tech	Oversight	N
Dan Street	QA Manager	Oversight	Y

### ON-SITE SUPPORT PERSONNEL

Name	Position	Trade / Work Performed	Y/N
Doug Herlocker, Tetra Tech	Air Monitoring Specialist	Air Monitoring.	N
Becky Dano, Tetra Tech	Air Monitoring Specialist	Air Monitoring.	Y
Jerry Faucheux, Tetra Tech	Air Monitoring Specialist	Air Monitoring	N

### OVERSITE PERSONNEL

Name	Position	Trade / Work Performed	Y/N
Scott McKeag, McGinley	Oversight	For NDEP	N
Devin Gordon, McGinley	Oversight	For NDEP	N
Dock Kim, ATC	Field Observation	For AIG	N
Ron Perry, ASW	Inspector	Liner Inspector	N
PBS&J, Survey	Surveyors		N
Brian Rakvica	Inspector	NDEP	N

### ON-SITE CONTRACTOR PERSONNEL

Name	Company	Trade / Work Performed	Y/N
Erik Geringer	Entact	Project Manager	Y
Josh Carrol	Entact	Asst Project Manager	Y
Russ Karnes	Entact	Eastside, Superintendent	Y
Michael Carlson	Entact	Engineer	Y
Joe Curilla	Entact	Health & Safety Officer	N
Timothy Stadt	Entact	Health and Safety Technician	Y
	Entact	22 Equipment Operators & Truck Drivers	Y
Ed Long	Entact	CAMU, Superintendent	Y
	American Asphalt	Earthwork Superintendent	Y
	American Asphalt	11 Equipment Operators & Truck Drivers,	Y
Rick McIntire	Entact	CSP, Safety	N
	Environmental Specialties, Inc	Liner Superintendent	N
	Environmental Specialties, Inc	3 Liner Seamers on site.	Y
	Kenney Survey	CAMU	N

# DAILY PRODUCTION & QUALITY CONTROL REPORT

Project No./Contract No.	Project Title / Location	Day of Report	Report No.
6389	BRC Eastside Common Areas Soils Remediation	06-Sep-08	69


## ON-SITE EQUIPMENT

Equipment	Vendor / Tag No.	Work Performed				
CAT D400E Dump Truck (2)		CAMU	-	-	-	-
JD D400 Dump Trucks (6)		Eastside		-	-	-
CAT 324D long stick excavator		CAMU	-	-	-	-
CAT D8R Dozer with disc		Eastside		-	-	-
CAT 345 excavator		Eastside		-	-	-
CAT 330 Excavator		Eastside		-	-	-
Case double pan scrapers.		Eastside		-	-	-
CAT D6 LGP Dozer (2)		Eastside				-
Water Trucks (2)		Eastside				-
637/631 Cat Scrapers (6)		CAMU				-
CAT 16H Grader		CAMU				-
CAT D-10 Dozer		CAMU				-
CAT Water Wagon		CAMU				-
CAT D-6 Dozer		CAMU				-
CAT 14H Grader		CAMU				-
Gradall		CAMU				-
Bobcat Skidsteer		CAMU				-
JLG		CAMU				-
CAT D4 dozer		CAMU				-
						-
						-
						-
						-
						-

## MATERIAL HANDLING (ON-SITE DELIVERY / REMOVAL)

Material	Vendor	QTY	UOM	Purpose	Delivery Verification			
					Condn	Qty	Spec	Tags
GCL	CETCO	0	rolls	For CAMU				
Geocomposite	Agri	0	rolls	For CAMU				
Woven Geotextile		0	rolls	For CAMU				

## WORK COMPLETED

Description of Work Executed Today

### Eastside Mixing and Drying Activity:

- Loaded out wet soils from SW-5 with CAT 345 excavator () trucks hauled 135 loads @ 20 cy/load = 2,700 cy.
- Loaded out prepared material from the dry ponds. 30 loads @ 20 cy/load = 600 cy.
- Tractor and pans - 103 loads @ 30 cy/loads = 3,090 cy prepared material - 2 tractors.
- Watered haul Rds and Maintained them with 4,000 gal Water truck and Motorgrader.
- CAT 324 Long Stick excavator worked on cleaning out the perimeter trenches in the SC-1 wet pond. Continued.

### CAMU Activity:

#### Excavation

- Northwest Detention Basin excavation - 631/637 scrapers - (0) cy. 0 scraper.
- Western Ditch. Power screener, AAG repairing belts. Manual screeners (2) delivered and used.
- Continued fence installation (poured concrete for posts) in Tronox area for haul road construction.

#### Embankment

- Phase 1 embankment, complete.
- Phase 1 estimated cumulative embankment placed: 0 cy

#### Waste Placement

- Phase 1 estimated daily waste placed: 0 cy
- Phase 1 estimated cumulative waste placed: 0 cy
- Phase 1 Operations Layer placed daily 75 loads @ 15 cy/load, (1,125) cy, 2 trucks.

#### Geosynthetics.

- Phase 1 GCL placed: 0 sf daily, 347,067 sf cumulative.
- Phase 1 Geomembrane: 0 sf daily, 365,136 sf cumulative
- Phase 1 Geocomposite: 0 sf daily, 327,600 sf cumulative.
- Phase 1 Geotextile: (0) sf daily..

Other: CAMU: ESI liner crew (3) performed repair on west slope above sump area.

Initiated the installation of orange construction fence around the Phase 3A Western Ditch area. Power screening next week. Continued.

### Perimeter Fence Inspection and Repair.

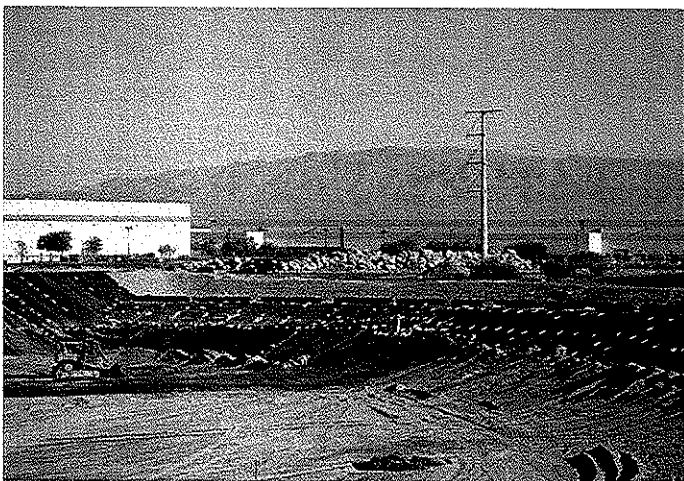


## DAILY PRODUCTION & QUALITY CONTROL REPORT

Project No./Contract No.	Project Title / Location	Day of Report	Report No.
<b>6389</b> <b>0</b>	<b>BRC Eastside Common Areas Soils Remediation</b> <b>0</b>	<b>06-Sep-08</b>	<b>69</b>

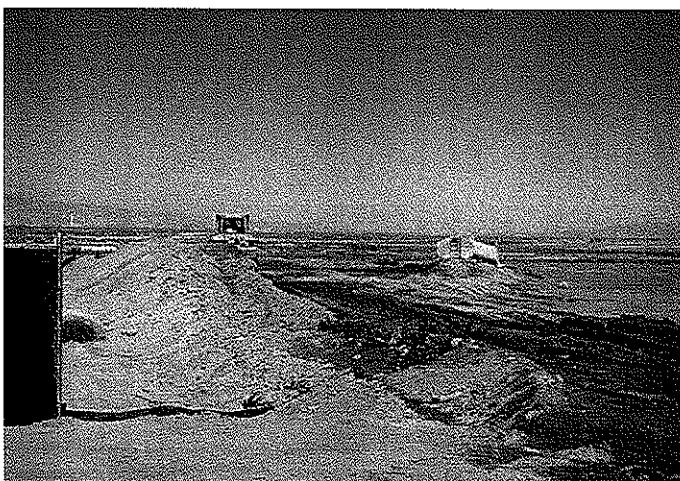
### DAILY PHOTO LOG

Photo 1



CAMU, Phase 1 Placing ops layer on Northeast slope..

Photo 2



Eastside, Beginning a haul road on dry pond side of sewer realignment.

Photo 3



CAMU: Phase 1 operation layer second lift..

Photo 4



CAMU, Manual Screening,Phase 1, ops layer with dust control.