

DAILY PRODUCTION & QUALITY CONTROL REPORT

Project No./Contract No.	Project Title / Location	Day of Report	Report No.
6389	BRC Eastside Common Areas Soils Remediation	20-Jan-09	191

PROJECT POINTS OF CONTACT

Position	Name	E-Mail Address	Phone No.
BRC PROJECT MANAGER	Lee Farris,	lfarris@landwellco.com	702-567-0400
BRC PROJECT MANAGER	Ranajit Sahu	sahuron@earthlink.net	702-567-0400
CONST. PROJECT MANAGER	Dan Brennecke	Dan.Brennecke@westonsolutions.com	970-260-5886
Construction Manager	Richard Laubinger	Richard.Laubinger@westonsolution.com	720-641-8660

WEATHER CONDITIONS

Conditions				Temp (°F)	Wind	Add'l Readings	
AM	Sunny/Clear	PM	Sunny/Clear	Low 42		Precip. (in/Day)	
				High 65	NNE 5mph	Humidity (%)	

Additional Weather Comments

Calm to light winds

ON-SITE WESTON PERSONNEL

Name	Position	Trade / Work Performed	Y/N
Dick Laubinger	Construction Manager	Construction Management Services.	Y
Dan Brennecke	Project Manager, CM	Construction Management Services.	Y
Richard Davis	Project Engineer	Construction Management Services.	Y
Chris White	Assist. Const. Mgr	Construction Management Services.	Y
Wayne Hodgson	Assist. Const. Mgr	Construction Management Services.	Y
Kevin Cooke	Assist. Const. Mgr	Construction Management Services.	Y
June Laubinger	Admin Assistant	Construction Management Services.	Y

ON-SITE GEOSYNTEC PERSONNEL

Name	Position	Trade / Work Performed	Y/N
Greg Corcoran	Design Engineer	Oversight	N
Dan Street	QA Manager	Oversight	Y
Jim Cox	QA/QC Supervisor	Oversight	N
Robecca Flynn	Engineer	Oversight	N
Wayne Wofford	QA/QC Tech	Oversight	N
Roland Derosier	QA/QC Tech	Oversight	Y
Camon Liddell	QA/QC Tech	Oversight	Y
Jeremy Osborn	QA/QC Tech	Oversight	Y
Victor Heredia	QA/QC Tech	Oversight	Y

ON-SITE SUPPORT PERSONNEL

Name	Position	Trade / Work Performed	Y/N
Doug Herlocker, Tetra Tech	Air Monitoring Specialist	Air Monitoring	N
Becky Dano, Tetra Tech	Air Monitoring Specialist	Air Monitoring.	Y
Jerry Fauchaux, Tetra Tech	Air Monitoring Specialist	Air Monitoring	N

OVERSITE PERSONNEL

Name	Position	Trade / Work Performed	Y/N
Mark Eizman, ASW	Inspector	Liner Inspector	Y
Devin Gordon, McGinley	Oversight	For NDEP	Y
Dock Kim, ATC	Field Observation	For AIG	Y
Joe Ludlow, ASW	Inspector	Liner Inspector	N
Steve Morrow, ASW	Inspector	Liner Inspector	N
Brian Rakvica	Inspector	NDEP	N
PBS&J, Survey	Surveyors	Surveying, QA, Phase IIIA subgrade.	Y

ON-SITE CONTRACTOR PERSONNEL

Name	Company	Trade / Work Performed	Y/N
Erik Geringer	Entact	Project Manager	N
Josh Carrol	Entact	Asst Project Manager	Y
Russ Karnes	Entact	Eastside, Superintendent	Y
Michael Carlson	Entact	Engineer	Y
Joe Curilla	Entact	Health & Safety Officer	Y
Timothy Stadt	Entact	Health and Safety Technician	Y
	Entact	26 Equipment Operators & Truck Drivers	Y
Ed Long	Entact	CAMU, Superintendent	Y
Lance Bruce	Entact	Health & Safety Officer	Y
Terry Harper	Entact	CAMU, Superintendent	Y
Rick McIntire	Entact	CSP, Safety	Y
Dale Walsh	Converse	CSP, Safety	N

DAILY PRODUCTION & QUALITY CONTROL REPORT

Project No./Contract No.	Project Title / Location	Day of Report	Report No.
6389	BRC Eastside Common Areas Soils Remediation	20-Jan-09	191

Eli Blackburn	Entact	Asst Project Manager	Y	
	Environmental Specialties, Inc	1 Liner Superintendent	Y	
	Environmental Specialties, Inc	12 Laborers/ Seamers	Y	
Jeromy Schissler	Entact	Acting Project Manager	Y	
	Kenney Survey	CAMU	N	
	ABC Survey	Eastside/CAMU	Y	

ON-SITE EQUIPMENT

Equipment	Vendor / Tag No.	Work Performed				
CAT D400E Dump Truck (10)		CAMU	-	-	-	-
JD D400 Dump Trucks (9)		Eastside		-	-	-
CAT 324D long stick excavator		Eastside	-	-	-	-
CAT D8R Dozer with disc		Eastside		-	-	-
CAT 345 excavators, (5)		Eastside and CAMU		-	-	-
CAT 330 Excavator		CAMU		-	-	-
Case double pan scrapers.		Eastside, demobilized.		-	-	-
CAT D6 LGP Dozer (1)		Eastside				-
Water Trucks (2)		Eastside				-
JD450 Dozer		CAMU				-
CAT 16H Grader		CAMU				-
CAT D-10 Dozer		CAMU				-
Water Trucks (2)		CAMU				-
CAT D-6 Dozer, (2)		CAMU				-
CAT 14H Grader		CAMU				-
Gradall		CAMU				-
JLG		CAMU				-
IR Smooth drum Roller		CAMU, Phase 1				-
Tenent Street Sweeper		Eastside and CAMU				-
Bomag Smooth drum Roller		CAMU, Phase 1				-
Chieftain 1400 Powerscreener		CAMU, screening 1" & 6" minus				-
						-

MATERIAL HANDLING (ON-SITE DELIVERY / REMOVAL)

Material	Vendor	Today	UOM	Purpose	Delivery Verification			
					to date	Qty	Spec	Tags
GCL	CETCO	0	rolls	For CAMU, On site		830		
Geocomposite	Agru	53	rolls	For CAMU, On site		939		
Geomembrane	Agru	0	rolls	For CAMU, On site		258		

WORK COMPLETED

Description of Work Executed Today

Eastside Mixing and Drying Activity:

Day Shift:

- Continue stockpiling/drying material in SW ponds.
- Continue pumping water from SW-7 to SW-12.
- Excavating in PUC-3 below the design excavation depth to 3 ft and hauling material to the Beta ditch stockpile area.
- Fabricated racks for air tanks to mount to the equipment for the slit trench work.

Night Shift:

- Continued hauling material from HP-3 and PUA-4.

CAMU Activity:

Day Shift:

- ESI continued placing geocomposite on N. BMI Landfill.
- Continued excavating contaminated soil from NW Basin/Phase IIIB and placing in Phase II.
- Continued screening cover soils for N. BMI Landfill from 200,000 cy stockpile.
- Continued placing 1" and 6" minus soils on N. BMI Landfill for cover material.
- Continued grading in Phase IIIA.
- Continued surficial scrape on Phase IIIB, IV and V and haul/place material to Phase II.

Night Shift:

- Continued placing waste in Phase II.

Embankment

- Phase 1 embankment, complete.
- Phase 1 estimated cumulative embankment placed: 0 cy
- Phase II embankment, complete.

Waste Placement

- Phase 1 estimated daily waste placed: (0) loads @ 20 cy/load = 0 cy. (0 trucks).
- night shift placed: (0) loads @ 18cy/load = 0 cy.
- Phase 1 estimated cumulative waste placed: 291,020 cy.
- Phase 1 Operations Layer placed, completed. Cumulative total: 21,662
- Phase 2 estimated night shift placed: (217) loads @ 18cy/load = 3,906 cy. (16 trucks).
- Phase 2 estimated day shift placed: (133) loads @ 20 cy/load = 2,660 cy (Phase IV & V Scrape) & (Phase IIIB trench excavation). (4 trucks).
- Phase 2 Operations Layer placed. Cumulative total: 37,188 cy.
- Phase 2 estimated cumulative waste placed: 116,872 cy

Basic Remediation Company

875 West Warm Springs Road
Henderson, Nevada 89011

DAILY PRODUCTION & QUALITY CONTROL REPORT

Project No./Contract No.	Project Title / Location	Day of Report	Report No.
6389 0	BRC Eastside Common Areas Soils Remediation 0	20-Jan-09	191

DAILY PHOTO LOG

Photo 1



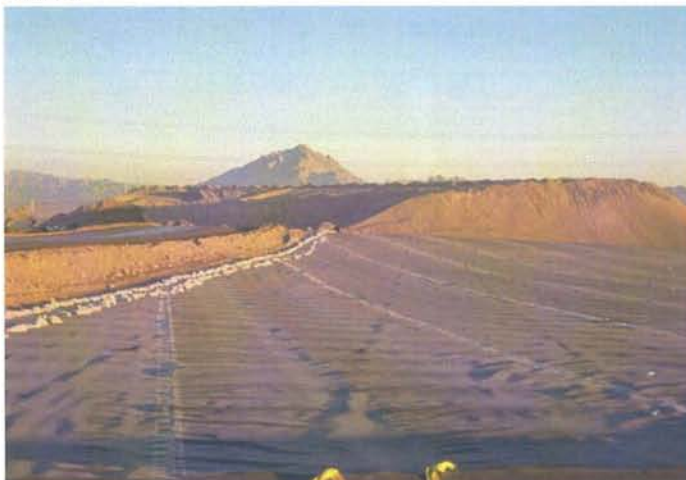
CAMU: Phase II waste being hauled in from NW Basin/Phase IIIB trench excavation of impacted soils.

Photo 2



CAMU: Phase IIIA, subgrade preparation for liner.

Photo 3



CAMU: N. BMI Landfill geomembrane and 200,000 cy stockpile.

Photo 4



Eastside: SC-1, Excavating a trench for dewatering pond.