

DAILY PRODUCTION & QUALITY CONTROL REPORT

Project No./Contract No.	Project Title / Location	Day of Report	Report No.
6389	BRC Eastside Common Areas Soils Remediation	27-Jan-09	198

PROJECT POINTS OF CONTACT

Position	Name	E-Mail Address	Phone No.
BRC PROJECT MANAGER	Lee Farris,	lfarris@landwellco.com	702-567-0400
BRC PROJECT MANAGER	Ranajit Sahu	sahuron@earthlink.net	702-567-0400
CONST. PROJECT MANAGER	Dan Brennecke	Dan.Brennecke@westonsolutions.com	970-260-5886
Construction Manager	Richard Laubinger	Richard.Laubinger@westonsolutions.com	720-641-8660

WEATHER CONDITIONS

Conditions				Temp (°F)		Wind		Add'l Readings	
AM	Sunny/Clear	PM	Sunny/Clear	Low	34			Precip. (in./dy.)	
				High	52	N	7mph	Humidity (%)	

Additional Weather Comments

Winds 5-10 mph

ON-SITE WESTON PERSONNEL

Name	Position	Trade / Work Performed	Y/N	
Dick Laubinger	Construction Manager	Construction Management Services.	Y	
Dan Brennecke	Project Manager, CM	Construction Management Services.	N	
Richard Davis	Project Engineer	Construction Management Services.	Y	
Chris White	Assist. Const. Mgr	Construction Management Services.	Y	
Wayne Hodgson	Assist. Const. Mgr	Construction Management Services.	Y	
Kevin Cooke	Assist. Const. Mgr	Construction Management Services.	Y	
June Laubinger	Admin Assistant	Construction Management Services.	Y	

ON-SITE GEOSYNTEC PERSONNEL

Name	Position	Trade / Work Performed	Y/N	
Greg Corcoran	Design Engineer	Oversight	N	
Dan Street	QA Manager	Oversight	Y	
Jim Cox	QA/QC Supervisor	Oversight	N	
Robecca Flynn	Engineer	Oversight	N	
Wayne Wofford	QA/QC Tech	Oversight	Y	
Roland Derosier	QA/QC Tech	Oversight	Y	
Camon Liddell	QA/QC Tech	Oversight	Y	
Jeremy Osborn	QA/QC Tech	Oversight	Y	
Victor Heredia	QA/QC Tech	Oversight	Y	

ON-SITE SUPPORT PERSONNEL

Name	Position	Trade / Work Performed	Y/N	
Doug Herlocker, Tetra Tech	Air Monitoring Specialist	Air Monitoring	N	
Becky Dano, Tetra Tech	Air Monitoring Specialist	Air Monitoring,	Y	
Jerry Fauchaux, Tetra Tech	Air Monitoring Specialist	Air Monitoring	N	

OVERSITE PERSONNEL

Name	Position	Trade / Work Performed	Y/N	
Mark Eizman, ASW	Inspector	Liner Inspector	N	
Devin Gordon, McGinley	Oversight	For NDEP	Y	
Dock Kim, ATC	Field Observation	For AIG	N	
Joe Ludlow, ASW	Inspector	Liner Inspector	N	
Steve Morrow, ASW	Inspector	Liner Inspector	N	
Brian Rakvica	Inspector	NDEP, inspect excavation cleanup at Phase IIIB.	Y	
PBS&J, Survey	Surveyors		N	

ON-SITE CONTRACTOR PERSONNEL

Name	Company	Trade / Work Performed	Y/N	
Erik Geringer	Entact	Project Manager	N	
Josh Carrol	Entact	Asst Project Manager	Y	
Russ Karnes	Entact	Eastside, Superintendent	Y	
Michael Carlson	Entact	Engineer	Y	
Joe Curilla	Entact	Health & Safety Officer	Y	
Timothy Stadt	Entact	Health and Safety Technician	Y	
	Entact	48 Equipment Operators & Truck Drivers	Y	
Ed Long	Entact	CAMU, Superintendent	Y	
Lance Bruce	Entact	Health & Safety Officer	Y	
Terry Harper	Entact	CAMU, Superintendent	Y	
Rick McIntire	Entact	CSP, Safety	Y	
Dale Walsh	Converse	CSP, Safety	N	
Eli Blackburn	Entact	Asst Project Manager	Y	
	Environmental Specialties, Inc.	1 Liner Superintendent	Y	
	Environmental Specialties, Inc.	12 Laborers/ Seamers	Y	
Jeremy Schissler	Entact	Acting Project Manager	Y	

DAILY PRODUCTION & QUALITY CONTROL REPORT

Project No./Contract No.	Project Title / Location	Day of Report	Report No.
6389	BRC Eastside Common Areas Soils Remediation	27-Jan-09	198

Roger Wagner	Entact	Eastside, Superintendent, Night Shift.	Y	
	ABC Survey	Eastside/CAMU, Mohawk Drive.	Y	
	Foundation Pile, Inc.	(8) Sheet Piling Crew	Y	

ON-SITE EQUIPMENT

Equipment	Vendor / Tag No.	Work Performed				
CAT D400E Dump Truck (10)		CAMU	-	-	-	-
JD D400 Dump Trucks (9)		Eastside		-	-	-
CAT 324D long stick excavator		Eastside	-	-	-	-
CAT D8R Dozer with disc		Eastside		-	-	-
CAT 345 excavators, (5)		Eastside and CAMU		-	-	-
CAT 330 Excavator		CAMU		-	-	-
Case double pan scrapers.		Eastside, demobilized.		-	-	-
CAT D6 LGP Dozer (1)		Eastside				-
Water Trucks (2)		Eastside				-
JD450 Dozer		CAMU				-
CAT 16H Grader		CAMU				-
CAT D-10 Dozer		CAMU				-
Water Trucks (2)		CAMU				-
CAT D-6 Dozer, (2)		CAMU				-
CAT 14H Grader		CAMU				-
Gradall		CAMU				-
JLG		CAMU				-
IR Smooth drum Roller		CAMU, Phase 1				-
Tenent Street Sweeper		Eastside and CAMU				-
Bomag Smooth drum Roller		CAMU, Phase 1				-
Chieftain 1400 Powerscreener		CAMU, screening 1" & 6" minus				-
(2) Cranes		Sheet pile driving.				-

MATERIAL HANDLING (ON-SITE DELIVERY / REMOVAL)

Material	Vendor	Today	UOM	Purpose	Delivery Verification			
					to date	Qty	Spec	Tags
GCL	CETCO	0	rolls	For CAMU, On site		830		
Geocomposite	Agru	0	rolls	For CAMU, On site		939		
Geomembrane	Agru	0	rolls	For CAMU, On site		258		

WORK COMPLETED

Description of Work Executed Today

Eastside Mixing and Drying Activity:

Day Shift:

- Stockpiled/drying material in SW ponds.
- Pumping water from SW-7 - SW-12.
- Excavating in PUC-3 & 4, below design excavation depth and hauling material to the Beta ditch and SW-2.
- Continued mixing and drying material with long stick excavator in 7A ponds.

Night Shift:

- Hauled material from HP-3 and PUA-4 to Phase II.
- Stockpiled daily cover for upcoming slit trench material placement in Phase II.

CAMU Activity:

- Day Shift:
- Continued screening soils from 200,000 cy stockpile.
- Hauled/placed 1" and 6" minus cover soils on N. BMI Landfill.
- Excavating contaminated soils from NW Basin/Phase IIIB and hauled/placed in Phase II.
- Continued surficial scrape on Phase IV & V and placing material in Phase II.
- ESI placed geosynthetics on Phase IIIA.
- Began drilling for sheet pile installation.
- Began sheet pile installation.

Night Shift:

- Placed materials in Phase II from the eastside.

Embankment

- Phase 1 embankment, complete.
- Phase 1 estimated cumulative embankment placed: 0 cy
- Phase II embankment, complete.

Waste Placement

- Phase 1 estimated daily waste placed: (0) loads @ 20 cy/load = 0 cy. Phase IV,V scape & Phase IIIB trench excavation. (0 truck).
- night shift placed: (0) loads @ 18cy/load = 0 cy.
- Phase 1 estimated cumulative waste placed: 291,200 cy.
- Phase 1 Operations Layer placed, completed. Cumulative total: 21,662
- Phase 2 estimated night shift placed: (232) loads @ 18cy/load = 4,176 cy, (20 trucks).
- Phase 2 estimated day shift placed: (91) loads @ 20 cy/load = 1,820 cy Phase IV, V scape, & (Phase IIIB trench excavation). (4 trucks).
- Phase 2 Operations Layer placed. Cumulative total: 37,188 cy.
- Phase 2 estimated cumulative waste placed: 148,940 cy.

Geosynthetics. Estimated cumulative installed quantity by Phase.

- Phase 1 GCL placed: 0 sf daily, 307,372 sf cumulative.
- Phase 1 Geomembrane: (0) sf daily, 307,372 sf cumulative.
- Phase 1 Geocomposite: (0) sf daily, 307,372 sf cumulative.
- Phase 1 Geotextile: (0) sf daily, 69,340 sf cumulative.
- Phase 2 GCL placed: 0 sf daily, 400,000 sf cumulative.

DAILY PRODUCTION & QUALITY CONTROL REPORT

Project No./Contract No.	Project Title / Location	Day of Report	Report No.
6389	BRC Eastside Common Areas Soils Remediation	27-Jan-09	198

- Phase 2 estimated cumulative waste placed: 148,940 cy.

Geosynthetics. Estimated cumulative installed quantity by Phase.

- Phase 1 GCL placed: 0 sf daily, 307,372 sf cumulative.
- Phase 1 Geomembrane: (0) sf daily, 307,372 sf cumulative.
- Phase 1 Geocomposite: (0) sf daily, 307,372 sf cumulative.
- Phase 1 Geotextile: (0) sf daily, 69,340 sf cumulative.
- Phase 2 GCL placed: (0) sf daily, 498,468 sf cumulative.
- Phase 2 Geomembrane: (0) sf daily, 498,468 sf cumulative.
- Phase 2 Geocomposite: (0) sf daily, 520,592 sf cumulative.
- BMI North Landfill GCL placed: (0) sf daily, 984,226 sf cumulative.
- BMI North Landfill Geomembrane: (0) sf daily, 984,266 sf cumulative.
- BMI North Landfill Geocomposite: (0) sf daily, (735,000) sf cumulative.
- Debris Storage Area, Eastside. Geomembrane: (12,000) sf cumulative.
- Phase IIIA GCL placed: (76,000) sf daily, (100,000) sf cumulative.
- Phase IIIA Geomembrane: (76,000) sf daily, (100,000) sf cumulative.
- Phase IIIA Geocomposite: (0) sf daily, (0) sf cumulative.

Other: Foundation Dile, Inc. began drilling and sheet pile driving in CAMBI

HEALTH & SAFETY

Description of Health & Safety Actions Taken Today / Safety Inspections Conducted

Entact H&S Tailgates

Safety Topic: Eastside, Day: Discussed haul truck patterns and visitor traffic.

Safety Topic: CAMU, Day: Discussed crossing coming into the CAMU, haul truck patterns. right of way.

Eastside and CAMU, Night: Be aware of pedestrians on the public roads.

Safety Incidents: None.

Dust Incidents: None.

CONSTRUCTION QUALITY ASSURANCE & QUALITY CONTROL

Description of Quality Control Actions Taken Today / Quality Inspections Conducted	
1	
2	
3	
4	
5	
6	
7	
8	
9	
10	
11	
12	
13	
14	
15	
16	
17	
18	
19	
20	
21	
22	
23	
24	
25	
26	
27	
28	
29	
30	
31	
32	
33	
34	
35	
36	
37	
38	
39	
40	
41	
42	
43	
44	
45	
46	
47	
48	
49	
50	
51	
52	
53	
54	
55	
56	
57	
58	
59	
60	
61	
62	
63	
64	
65	
66	
67	
68	
69	
70	
71	
72	
73	
74	
75	
76	
77	
78	
79	
80	
81	
82	
83	
84	
85	
86	
87	
88	
89	
90	
91	
92	
93	
94	
95	
96	
97	
98	
99	
100	

Daily CQA Summary.

Monitored waste relocation and waste placement from Eastside to CAMU Phase II on the night shift.
Monitored proofrolling of waste at phase II.
Monitored screening operation at the 200,000 cy stockpile.
Monitored the installation of cover soil at the North BMI Landfill.
Monitored the installation of geosynthetics in Phase IIIA.
Continue review of and updating of project documents and database to facilitate reporting.
Monitored waste placement in Phase II during day shift. Phase IIIB trench excavation, IV & V scrape.

ISSUES AND/OR ITEMS OF DISCUSSION

Discussion of Issues / Concerns / Conversations / Topics

SITE VISITORS

[illegible]

Report Prepared By / Title	Date Prepared	Signature
----------------------------	---------------	-----------

Richard Laubinger, Construction Manager 27-Jan-09

Date Prepared _____ Signature _____

27-Jan-09

Signature _____

Basic Remediation Company

875 West Warm Springs Road
Henderson, Nevada 89011

DAILY PRODUCTION & QUALITY CONTROL REPORT

Project No./Contract No.	Project Title / Location	Day of Report	Report No.
6389 0	BRC Eastside Common Areas Soils Remediation 0	27-Jan-09	198

DAILY PHOTO LOG

Photo 1



CAMU: Phase IIIA, Liner installation.

Photo 2



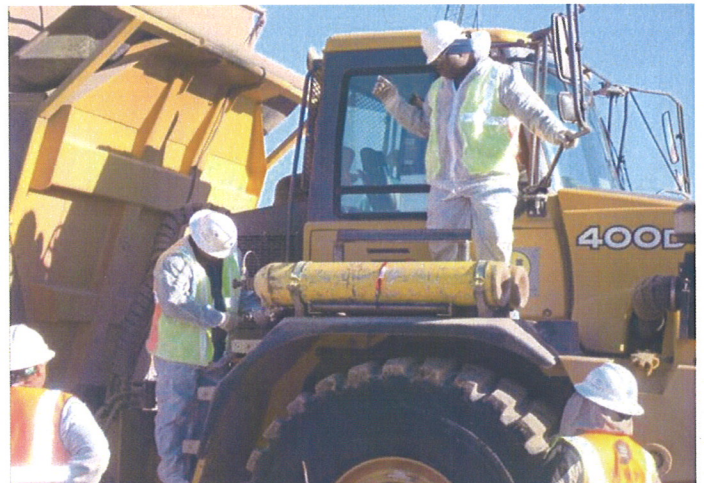
CAMU: Phase IIA Liner installation.

Photo 3



CAMU: Placing 1" soils on North BMI Landfill.

Photo 4



.CAMU: Mounting Level B air tanks for slit trench activity, dry run.