



DAILY PRODUCTION & QUALITY CONTROL REPORT

Project No./Contract No.	Project Title / Location	Day of Report	Report No.
6389	BRC Eastside Common Areas Soils Remediation	14-May-09	305

PROJECT POINTS OF CONTACT

Position	Name	E-Mail Address	Phone No.
BRC PROJECT MANAGER	Lee Farris	lfarris@landwellco.com	702-567-0400
BRC PROJECT MANAGER	Ranjit Sahu	sahuron@earthlink.net	702-567-0400
CONST. PROJECT MANAGER	Dan Brennecke	Dan.Brennecke@westonsolutions.com	970-260-5886
Construction Manager	Richard Laubinger	Richard.Laubinger@westonsolution.com	720-641-8660

WEATHER CONDITIONS

Conditions		Temp (°F)	Wind	Add'l Readings
AM	Sunny/Clear	Low 72		Precip. (in.)
PM	Sunny/Clear	High 97	S 5 mph	Humidity (%)

Additional Weather Comments

Calm to 5 mph.

ON-SITE WESTON PERSONNEL

Name	Position	Trade / Work Performed	Y/N
Dick Laubinger	Construction Manager	Construction Management Services.	Y
Dan Brennecke	Project Manager, CM	Construction Management Services.	N
Richard Davis	Project Engineer	Construction Management Services.	Y
Chris White	Assist. Const. Mgr	Construction Management Services.	Y
Wayne Hodgson	Assist. Const. Mgr	Construction Management Services.	Y
Kevin Cooke	Assist. Const. Mgr	Construction Management Services.	Y
Jane Laubinger	Admin Assistant	Construction Management Services.	Y

ON-SITE GEOSYNTEC PERSONNEL

Name	Position	Trade / Work Performed	Y/N
Greg Corcoran	Design Engineer	Oversight	N
Dan Street	QA Manager	Oversight	Y
Jim Cox	QA/QC Supervisor	Oversight, Site Visit.	Y
Robecca Flynn	Engineer	Oversight	N
Sam Campbell-Nelson	QA/QC Tech	Oversight	Y
Roland Derossier	QA/QC Tech	Oversight	Y
Camon Liddell	QA/QC Tech	Oversight	Y
Victor Heredia	QA/QC Tech	Oversight	Y
Meghen Lithgow	QA/QC Tech	Oversight	Y

ON-SITE SUPPORT PERSONNEL

Name	Position	Trade / Work Performed	Y/N
Doug Herlocker, Tetra Tech	Air Monitoring Specialist	Air Monitoring	N
Becky Dano, Tetra Tech	Air Monitoring Specialist	Air Monitoring	Y
Jerry Fauchaux, Tetra Tech	Air Monitoring Specialist	Air Monitoring	N

OVERSITE PERSONNEL

Name	Position	Trade / Work Performed	Y/N
Bob Meyer, ASW	Inspector	Liner Inspector,	Y
Devin Gordon, McGinley	Oversight	For NDEP	Y
Dock Kim, ATC	Field Observation	For AIG	Y
Brian Rakvica	Inspector	NDEP	N
Steve Morrow, ASW	Inspector	Liner Inspector	N
PBS&J, Survey	Surveyors	Survey	N

ON-SITE CONTRACTOR PERSONNEL

Name	Company	Trade / Work Performed	Y/N
Erik Geringer	Entact	Project Manager	N
Jeremy Schissler	Entact	Acting Project Manager	Y
Josh Carroll	Entact	Asst Project Manager	Y
Michael Carlson	Entact	Engineer	Y
Joe Curilla, Day	Entact	Health & Safety Officer	Y
Timothy Stadt, Day	Entact	Health and Safety Officer	Y
Roger Wagner, Night	Entact	Eastside, Superintendent	Y
Ed Long, Day	Entact	CAMU, Superintendent	Y
Lance Bruce, Nights	Entact	Health & Safety Officer	Y
Terry Harper, Night	Entact	CAMU, Superintendent	Y
Rick McIntire	Entact	CSP, Health & Safety	N
John Frazier, Nights	Entact	Health & Safety Officer	Y
Eli Blackburn	Entact	Asst Project Manager	Y
Scott Zattau, Day	Entact	Health & Safety Technician	Y
Jose Martinez, Night	Entact	Health & Safety Technician	Y
Carol McKenzie, Night/Day	Entact	Health & Safety Officer	Y
Dawn Breedlove, Night	Entact	Health & Safety Technician	Y
Russell Karnes	Entact	Superintendent, Additional Tasks, Southern Rib, etc.	Y
Environmental Specialties, Inc.		Liner Crew, (1) Supt, 9 Laborers/ Seamers	Y
ABC Survey		Eastside/CAMU	N

ON-SITE EQUIPMENT

Equipment	Vendor / Tag No.	Work Performed				
CAT D400E Dump Truck (10)		CAMU	-	-	-	-
JD D400 Dump Trucks (10)		Eastside	-	-	-	-
CAT 324D long stick excavator		Eastside	-	-	-	-
CAT D8R Dozer with disc, (1)		Eastside	-	-	-	-
CAT 345 excavators, (8)		Eastside and CAMU, Southern Rib	-	-	-	-
CAT 330 Excavator (1)		CAMU	-	-	-	-
Kobelco Excavator, (1)		CAMU	-	-	-	-
CAT D6 LSP Dozer (1)		Eastside	-	-	-	-
Water Trucks (3)		Eastside	-	-	-	-
Case backhoe		CAMU	-	-	-	-
CAT 16H Grader		CAMU	-	-	-	-
CAT D-10 Dozer		CAMU	-	-	-	-
Water Trucks (4)		CAMU	-	-	-	-
CAT D-6 Dozer, (3)		CAMU	-	-	-	-
CAT 14H Grader		CAMU	-	-	-	-
GradaIt		CAMU	-	-	-	-
JLG		CAMU	-	-	-	-
Smooth drum Rollers, (3)		CAMU	-	-	-	-
Tenent Street Sweeper		Eastside and CAMU	-	-	-	-
Komatsu Loader		CAMU, Phase 1	-	-	-	-
Chieftain 1400 Powerscreener		CAMU	-	-	-	-

MATERIAL HANDLING (ON-SITE DELIVERY / REMOVAL)

Material	Vendor	Today	UOM	Purpose	Delivery Verification
GCL	CETCO	52	rolls	For CAMU, On site	1729
Geocomposite	Agru	0	rolls	For CAMU, On site	2442
Geomembrane	Agru	0	rolls	For CAMU, On site	558

WORK COMPLETED

DAILY PRODUCTION & QUALITY CONTROL REPORT			
Project No./Contract No.	Project Title / Location	Day of Report	Report No.
6389	BRC Eastside Common Areas Soils Remediation	14-May-09	305

Description of Work Executed Today

Eastside Mixing and Drying Activity:

Day Shift:

- Continued scraping and loading material on haul road next to PUB-5. Hauling to Beta ditch staging area.
- Continue final scrape of haul rd. PUA-8 and PUA-9. Hauling to Beta ditch staging area.
- Tracking wet material from SW-7, spread out in dry ponds.
- Scrape and stockpile Southern Rib.
- Began clearing and grubbing tamarisk and brush at Western Hook in ditch area.
- Continued North Beta ditch excavation, loading out and hauling to beta ditch staging area.
- Sampled SW-12, pH: 6.

Night Shift:

- Hauled stockpiled material from the Beta Ditch and WST pond stockpiles to Phase II and IIA.

CAMU Activity:

Day Shift

- Continued excavation of SW-1, slit trench, using concrete breaker on cementitious yellow material and hauled to Phase II.
- Continued excavation of NE-1 and NE-2 and hauled to Phase II. MGA and Weston inspected and approved a portion for backfill.
- Excavating SE-1, slit trench and hauling to Phase II landfill.
- ESI liner crew installing geosynthetics on BMI South Landfill.
- Installed drainage aggregate for Phase IIIB LCRS system.
- Continued grading floor in Phase IV.
- Grading 12" operations layer in Phase IIIB.

Night Shift

- Continued placing material in Phase II and Phase IIIA.

Embankment

- Phase 1 embankment, complete.
- Phase 1 estimated cumulative embankment placed:
- Phase II embankment, complete.

Sump/Vadose Monitoring Phase I: LCRS Sump: Measurement taken: (N/A). Water Pumped: (N/A).
Vadose: Measurement taken: (N/A). Water Pumped: (N/A).
Phase II: LCRS Sump: Measurement taken: (N/A) Water Pumped: (N/A).
Vadose: N/A..

Inspections: CAMU: Weston monitored sump access. N/A.
MGA and Weston inspected West end portion of NE-1 and NE-2, Slit trenches. Approved just beyond Phase IV limits.

Eastside: Perimeter fence inspection, no findings, all secure.

Estimated Waste Placement (Estimated volumes do not account for shrinkage due to loss of moisture on wet ponds)

Phase I

Previous Daily Cumulative = 291,200 cy
Operations layer placed (completed) for liner certification. = 21,662 0 cy
Daily Day shift waste placed today: Phase IV,V scape & Phase IIIB trench excavation. 0 loads @ 20 cy/load (0 trucks) = 0 cy
Daily Night shift placed today: 0 loads @ 18cy/load (0 trucks) = 0 cy
To Date Phase I estimated cumulative waste placed = 291,200 cy

Phase II

Previous Daily Cumulative = 619,680 cy
Operations layer placed (completed) for liner certification. = 37,188 cy

Daily Day shift waste placed today: Parcel 4B/Mohawk Drive. (0) loads @ 18 cy/load (0) trucks = cy
Daily Day shift waste placed today: Slit Trenches, (150) loads @ 18cy/load (7) trucks = 2,700 cy
Daily Night shift placed today: (117) loads @ 18cy/load (14) trucks = 2,106 cy
To Date Phase II estimated cumulative waste placed = 624,486 cy

Phase IIIA

Previous Daily Cumulative = 132,426 cy
Operations layer placed directly in Phase IIIA today: (0) loads @ 18 cy/load (0) trucks = cy

Operations layer placed (completed for liner certification = 21,276) cy
Daily Day shift waste placed today: From Phase IIIB. (0) loads @ 18 cy/load (0) trucks = cy
Daily Night shift waste placed today: (139) loads @ 18cy/load (18) trucks = 2,502 cy
To Date Phase IIIA estimated cumulative waste placed = 134,928 cy

Phase IIIB

Previous Daily Cumulative = 8,190 cy

Operations layer placed: (0) loads @ 18cy/load (0) trucks = cy
Daily Day shift waste placed today: From ?? (0) loads @ 18 cy/load (0) trucks = cy
Daily Night shift waste placed today: (0) loads @ 18cy/load (0) trucks = cy
To Date Phase IIIA estimated cumulative waste placed = 8,190 cy

	Estimated Waste at Completion (cy)	% Complete
Cummulative Total To Date All Phases =	1,058,804 cy	51.6%

Geosynthetics Placed

	Previous	Placed	Cummulative
Phase I (complete)			
GCL	307,372	0	307,372
Geomembrane	307,372	0	307,372
Geocomposite	307,372	0	307,372
Geotextile	69,340	0	69,340
Phase II (complete)			
GCL	498,468	0	498,468
Geomembrane	498,468	0	498,468
Geocomposite	520,592	0	520,592
Geotextile	0	0	0
Phase IIIA			
GCL	221,000	0	221,000
Geomembrane	221,000	0	221,000
Geocomposite	221,000	0	221,000
Geotextile	20,000	0	20,000
Phase IIIB			
GCL	340,535	0	340,535
Geomembrane	340,535	0	340,535
Geocomposite	292,600	47,935	340,535
Geotextile	20,010	29,990	50,000
Phase IV			
GCL	0	0	0
Geomembrane	0	0	0
Geocomposite	0	0	0
Geotextile	0	0	0
Phase V			
GCL	0	0	0

DAILY PRODUCTION & QUALITY CONTROL REPORT

Project No./Contract No.	Project Title / Location	Day of Report	Report No.
6389	BRC Eastside Common Areas Soils Remediation	14-May-09	305

Geomembrane	0	0	0
Geocomposite	0	0	0
Geotextile	0	0	0

BMI North

GCL	1,111,468	0	1,111,468
Geomembrane	1,111,468	0	1,111,468
Geocomposite	1,111,468	0	1,111,468

BMI South

GCL	20,000	80,000	100,000
Geomembrane	20,000	80,000	100,000
Geocomposite	0	0	0

Debris Storage Area (complete)

Geomembrane	12,000	0	12,000
-------------	--------	---	--------

CAMU Cover

GCL	0	0	0
Geomembrane	0	0	0
Geocomposite	0	0	0

		Total Geosynthetics for CAMU Basic Scope (\$)	% Complete of Basic Scope	Total Geosynthetics for CAMU Basic Scope +Option Scope	% Complete of Basic Scope + Option Scope	
Geosynthetic System	Cummulative Total To Date All CAMU	2,578,843	4,151,232	62.1%	6,534,075	39.5%

HEALTH & SAFETY

HEALTH & SAFETY	
Description of Health & Safety Actions Taken Today / Safety Inspections Conducted	
<p>1. Safety Inspections Conducted:</p> <ul style="list-style-type: none"> General safety inspection of the work area. Inspection of electrical equipment and wiring. Inspection of fire extinguishers and fire escape routes. Inspection of first aid kit and safety equipment. 	
<p>2. Health & Safety Actions Taken Today:</p> <ul style="list-style-type: none"> Revised safety protocols for handling hazardous materials. Conducted safety training for new employees. Implemented measures to improve ventilation in the laboratory. Conducted a fire drill. 	

Safety Topic:

Eastside Day: Discussed hydrating with high temperatures.
CAMU Day: Discussed hydrating with high temperatures.
CAMU & Eastside Night Shift: Discussed Truck bed rollover on day shift.

CONSTRUCTION QUALITY ASSURANCE & QUALITY CONTROL

CONSTRUCTION QUALITY / ASSURANCE & QUALITY CONTROL	
Description of Quality Control Actions Taken Today / Quality Inspections Conducted	
<p>1. Inspected the foundation and wall construction for proper alignment and reinforcement.</p> <p>2. Verified the placement and compaction of concrete for the foundation and walls.</p> <p>3. Checked the installation of formwork and bracing for the foundation and walls.</p> <p>4. Monitored the curing process of the concrete foundation and walls.</p> <p>5. Inspected the roof structure for proper framing and bracing.</p> <p>6. Verified the placement and compaction of concrete for the roof slab.</p> <p>7. Checked the installation of formwork and bracing for the roof slab.</p> <p>8. Monitored the curing process of the concrete roof slab.</p> <p>9. Inspected the interior walls and ceiling for proper alignment and reinforcement.</p> <p>10. Verified the placement and compaction of concrete for the interior walls and ceiling.</p> <p>11. Checked the installation of formwork and bracing for the interior walls and ceiling.</p> <p>12. Monitored the curing process of the concrete interior walls and ceiling.</p> <p>13. Inspected the floor construction for proper alignment and reinforcement.</p> <p>14. Verified the placement and compaction of concrete for the floor slab.</p> <p>15. Checked the installation of formwork and bracing for the floor slab.</p> <p>16. Monitored the curing process of the concrete floor slab.</p> <p>17. Inspected the exterior walls and roof for proper alignment and reinforcement.</p> <p>18. Verified the placement and compaction of concrete for the exterior walls and roof.</p> <p>19. Checked the installation of formwork and bracing for the exterior walls and roof.</p> <p>20. Monitored the curing process of the concrete exterior walls and roof.</p>	

Daily CQA Summary.

Monitored waste placement of easidise waste materials in Phase II & IIA Landfill on the night shift.

Monitored the placement of operations layer 1" minus pushing out 12" lift on the day shift.

Monitored waste placement of slit trench materials in Phase II during the day shift.

Monitored the installation of geosynthetics at the BMI South Landfill.

Monitored the installation of woven geotextile on slopes at Phase IIB.

Inventory incoming geosynthetics, 52 rolls of GCL.

Continue review of and updating of project documents and Database to facilitate reporting.

ISSUES AND/OR ITEMS OF DISCUSSION

Discussion of Issues / Concerns / Conversations / Topics

MGA and Weston inspected silt trenches NE-1 and NE-2. West portion waste removed to visibly clean soil. Not to design grade. Entact pot holed to design grade depth in (3) spots to design depth all floors and walls were visibly clean gravel. Area approved for backfill. Appeared to be an access ramp as waste was evident as they excavated to the east. Entact had a articulating haul truck roll its bed over during the day shift. No injuries, truck was inspected and righted then driven out of Phase II.

SITE VISITORS

[illegible]

Report Prepared By / Title






Date Prepared

Signature _____

Richard Laubinger, Construction Manager

14-May-09

Weather Table

Sunny/Clear	
Sunny / Partly Cloudy	
Cloudy / Partly Sunny	
Cloudy	
Overcast	
Light Rain	
Rain	
Thunderstorms	
Snow	

Basic Remediation Company

875 West Warm Springs Road
Henderson, Nevada 89011

DAILY PRODUCTION & QUALITY CONTROL REPORT

Project No./Contract No.	Project Title / Location	Day of Report	Report No.
6389 0	BRC Eastside Common Areas Soils Remediation 0	14-May-09	305

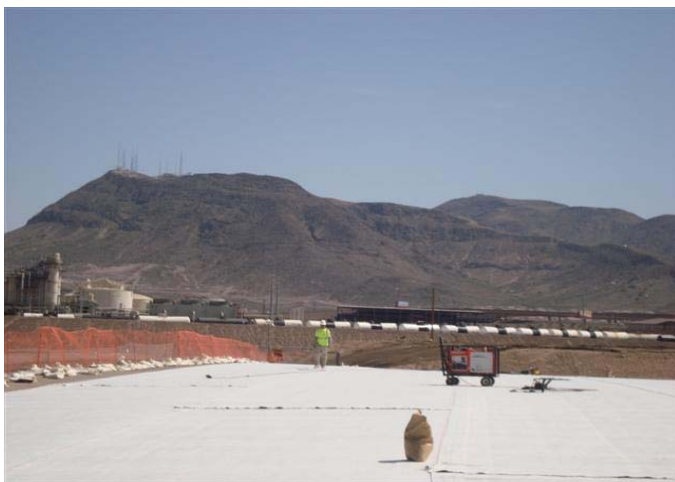
DAILY PHOTO LOG

Photo 1



Eastside: PUB-5 haul rd.

Photo 2



CAMU: BMI South Landfill.

Photo 3



CAMU: BMI South Landfill.

Photo 4



CAMU: Slit trenches NE-1 and NE-2.